

# Converting Colors

Hex(EAD9DF)

Have a look what the booklet for  
Hex(EAD9DF) contains.

<b>Hex(EAD9DF)</b> .....	3
<i><b>Conversions</b></i> .....	4
<i><b>Details</b></i> .....	6
<i><b>Harmonies</b></i> .....	11
<i><b>Previews</b></i> .....	23
<i><b>Color Blindness Simulation</b></i> .....	26
<i><b>CSS Examples</b></i> .....	29

# **Color**

**Hex(EAD9DF)**

# Conversions

## Conversions Part 1

Format	Color
Hex	EAD9DF
RGB	234, 217, 223
RGB Percent	92%, 85%, 87%
CMY	0.0824, 0.1490, 0.1255
CMYK	0.00, 0.07, 0.05, 0.08
HSL	339°, 29%, 88%
HSV	339°, 7%, 92%
XYZ	72.0638, 72.4458, 79.9973
YIQ	222.7670, 8.2060, 5.4700

# Conversions

## Conversions Part 2

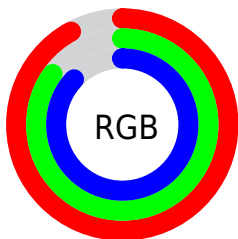
<b>Format</b>	<b>Color</b>
<b>R<sub>YB</sub></b>	234, 217, 223
Decimal	15391199
CIE <sub>Lab</sub>	88.18, 6.86, -0.84
CIE <sub>LCh</sub>	88, 6.916, 352.997
Yxy	72.4458, 0.3210, 0.3227
Android (android.graphics.Color)	4293581279 (0xFFEAD9DF)
YUV	222.7670, 0.1149, 9.8513
Hunter-Lab	85.1151, 2.1779, 3.8556

# Details

The Hex color **EAD9DF** is a light color, and the websafe version is hex **CCCCCC**. A complement of this color would be **D9EAE4**, and the grayscale version is **DFDFDF**.

A 20% lighter version of the original color is **FFFFFF**, and **B2A2A8** is the 20% darker color. If you saturate the color by 10%, you get **EAC2D0**, and if you desaturate by 10%, it is **EAF0EE**.

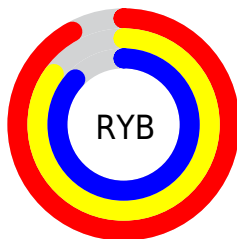
# Distribution



Red (92%)

Green (85%)

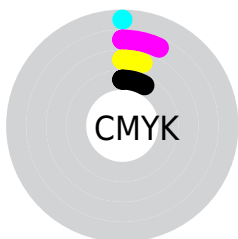
Blue (87%)



Red (92%)

Yellow (85%)

Blue (87%)

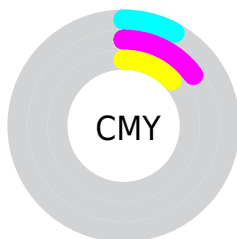


Cyan (0%)

Magenta (7%)

Yellow (5%)

Black (8%)



Cyan (8%)

Magenta (15%)

Yellow (13%)

# Brightness & Saturation Gradients

These gradients show how the Hex color EAD9DF changes by changing the brightness by 10 percent. The first figure shows a shift by +10% for each color and the second figure -10%.

Similar to the brightness gradients but the following saturation gradients show a change of the Hex color EAD9DF by changing the saturation by 10% instead.



 EAD9DF

FFFFFF

 EAD9DF

 CEBDC3

 B2A2A8

 97888D

 7E6F74

 65565B

 4D3F44

 36292E

 201519

 000000

 EAD9DF

 EAD9DF

 EAC2D0

 EAF0EE

 EAAAC1

 EAFFFD

 EA93B2

 EAFFFF

 EA7BA2

 EA6493

 EA4D84

 EA3575

 EA1E66

 EA0657

# Harmonies

## Analogous

The Analogous color harmony consists of three colors that are next to each other on the color wheel.



E5DAE5



EAD9DF



ECD9D8

# Triad

The Triadic color harmony groups three colors that are evenly spaced from another and form a triangle on the color wheel.



EAD9DF



DDDED1



CFE0E7

# Complementary

The Complementary color scheme is a pair of colors which are on the opposite of each other on the color wheel.



EAD9DF



D9EAE4

# Split Complementary

Split-complementary colors differ from the complementary color scheme. The scheme consists of three colors, the original color and two neighbors of the complement color.



CDE1E2



EAD9DF



D6E0D5

# Square

The Square scheme is like the rectangle color scheme, but the four colors are evenly spaced on the color wheel.



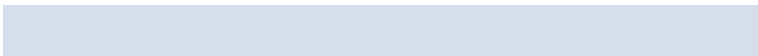
EAD9DF



E5DCD0



D0E1DB



D5DEEA

# Rectangle

The Rectangle color scheme consists of four colors that form a rectangle on the color wheel.



EAD9DF



EBDAD4



D0E1DB



CEE1E6



# Sweetspot

The Sweet Spot groups the original color and five complimentary colors.



EAD9DF



FFFAFC



E4D9EA



807D7E



000000



808080



# Same Dimension

The Same Dimension uses a secret algorithm to generate beautiful new colors.



EAD9DF



FFE8F0



EADBD9



756A6E



B50040



360013



# Inverse Universe

The Inverse Universe completely reimagines the original color for something new.



EAD9DF



FFE8F0



D9E8EA



756A6E



B50040

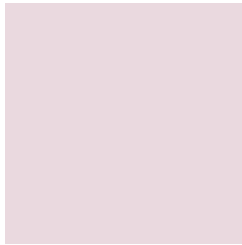


360013



# Previews

## White Background



This preview shows how the Hex color EAD9DF looks on a white background.

## Color Contrast Check

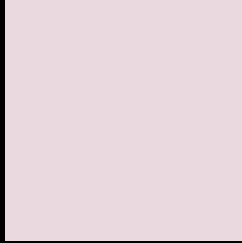
Large Text (above 18pt) WCAG AA × Fail

Any Text WCAG AA × Fail

Large Text (above 18pt) WCAG AAA × Fail

Any Text WCAG AAA × Fail

# Black Background



This preview shows how the Hex color EAD9DF looks on a black background.

## Color Contrast Check

Large Text (above 18pt) WCAG AA ✓ Pass

Any Text WCAG AA ✓ Pass

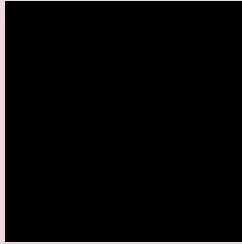
Large Text (above 18pt) WCAG AAA ✓ Pass

Any Text WCAG AAA ✓ Pass

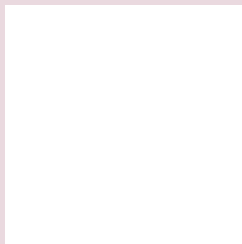
If you want to check with other color combinations, try the [Color Contrast Checker](#).



## Hex EAD9DF Background



This preview shows how black text looks on a background with the Hex color EAD9DF.

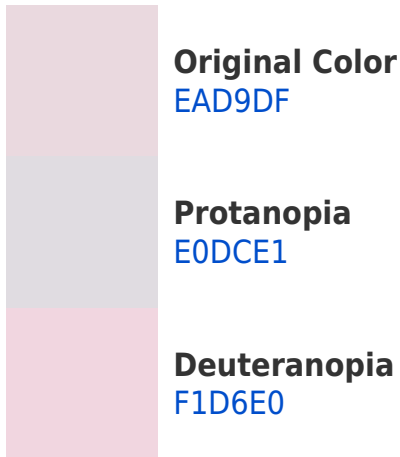


This preview shows how white text looks on a background with the Hex color EAD9DF.

# Color Blindness Simulation

Color vision deficiency is a very complex topic, and I could not describe the different causes any better than Wikipedia does, so if you want to learn more, you should check out their [article about color blindness](#).

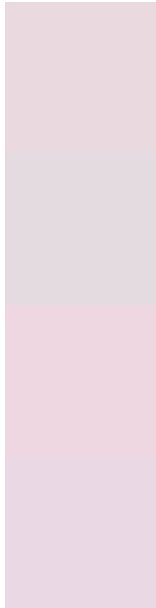
## Dichromacy





**Tritanopia**  
EBD8E8

# Trichromacy



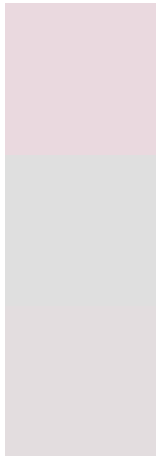
**Original Color**  
EAD9DF

**Protanomaly**  
E4DBE0

**Deuteranomaly**  
EED7E0

**Tritanomaly**  
EBD8E5

# Monochromacy



**Original Color**  
EAD9DF

**Achromatopsia**  
DFDFDF

**Achromatomaly**  
E3DDDF

# CSS Examples

## Text

The CSS property to change the color of the text to Hex EAD9DF is called "color". The color property can be set on classes, ids or directly on the HTML element.

This example shows how text in the color #EAD9DF looks like.

```
.text, #text, p{  
    color:#EAD9DF  
}
```

If you want to add a text shadow in that color use the text-shadow property, you can generate a text shadow directly with our [CSS Text Shadow Generator](#).

Here you see how black text with a 4 pixel #EAD9DF colored shadow looks like.

```
.shadow{ text-shadow: 4px 4px 2px #EAD9DF
}
```

## Border

The CSS property to change the border of an element to Hex EAD9DF is called "border". The border property can be set on classes, ids or directly on the HTML element.

This example shows the color as border, it can be applied via the CSS property "border" or "border-color".

```
.border, #border, table{ border:4px solid
#EAD9DF }
```

If only the border color should be changed use the property `border-color`.

```
.border{ border-color:#EAD9DF }
```

If you want to add a box shadow in that color use:

Here you see how a box with a 4 pixel #EAD9DF colored shadow looks like.

```
.boxshadow{ -moz-box-shadow:4px 4px 4px  
4px #EAD9DF; -webkit-box-shadow:4px 4px  
4px 4px #EAD9DF; box-shadow:4px 4px 4px  
4px #EAD9DF }
```

# Background

The CSS property to change the background color of an element to Hex EAD9DF is called "background". The background property can be set on classes, ids or directly on the HTML element.

```
.background, #background, body{  
background:#EAD9DF }
```

If only the background color should be changed can be used:

```
.background{ background-color:#EAD9DF }
```

This example shows the color as background, it is applied via the CSS property "background".

To optimize and compress your CSS code, you can use our [online CSS compressor and optimizer](#) based on csstidy. If you want to create a linear or radial gradient as background or border, check our [CSS Gradient Generator](#).



Hey! You found this booklet interesting? Support Converting Colors with the new Membership Option!

The pro membership hides all ads, plus gives you double the colors in the color bucket, and more awesome pro features!

**[Learn more, Memberships starting at \\$2.50/m!](#)**

**Follow me  
on Twitter!**

@ConvertingColor