

# Converting Colors

Hex(EB3463)

Have a look what the booklet for  
Hex(EB3463) contains.

<b>Hex(EB3463)</b> .....	3
<i><b>Conversions</b></i> .....	4
<i><b>Details</b></i> .....	6
<i><b>Harmonies</b></i> .....	11
<i><b>Previews</b></i> .....	23
<i><b>Color Blindness Simulation</b></i> .....	26
<i><b>CSS Examples</b></i> .....	29

**Color**

**Hex(EB3463)**

# Conversions

## Conversions Part 1

<b>Format</b>	<b>Color</b>
Hex	EB3463
RGB	235, 52, 99
RGB Percent	92%, 20%, 39%
CMY	0.0784, 0.7961, 0.6118
CMYK	0.00, 0.78, 0.58, 0.08
HSL	345°, 82%, 56%
HSV	345°, 78%, 92%
XYZ	37.7411, 21.0190, 13.8723
YIQ	112.0750, 93.9810, 53.4130

# Conversions

## Conversions Part 2

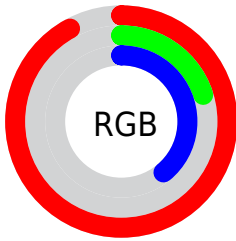
<b>Format</b>	<b>Color</b>
<b>R<sub>YB</sub></b>	235, 52, 99
Decimal	15414371
CIE <sub>Lab</sub>	52.97, 70.22, 18.28
CIE <sub>LCh</sub>	53, 72.558, 14.590
Yxy	21.0190, 0.5196, 0.2894
Android (android.graphics.Color)	4293604451 (0xFFEB3463)
YUV	112.0750, -6.4460, 107.8052
Hunter-Lab	45.8465, 66.7108, 14.1525

# Details

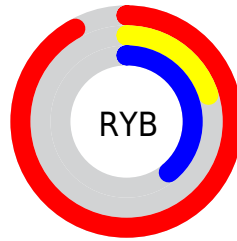
The Hex color **EB3463** is a dark color, and the websafe version is hex **FF3366**. The color can be described as dark washed rose. A complement of this color would be **34EBBC**, and the grayscale version is **707070**.

A 20% lighter version of the original color is **FF7395**, and **AC0035** is the 20% darker color. If you saturate the color by 10%, you get **EB1D52**, and if you desaturate by 10%, it is **EB4C74**.

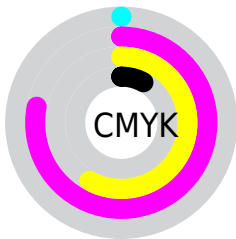
# Distribution



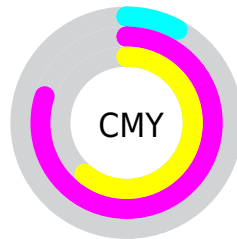
- Red (92%)
- Green (20%)
- Blue (39%)



- Red (92%)
- Yellow (20%)
- Blue (39%)



- Cyan (0%)
- Magenta (78%)
- Yellow (58%)
- Black (8%)



- Cyan (8%)
- Magenta (80%)
- Yellow (61%)

# Brightness & Saturation Gradients

These gradients show how the Hex color EB3463 changes by changing the brightness by 10 percent. The first figure shows a shift by +10% for each color and the second figure -10%.

Similar to the brightness gradients but the following saturation gradients show a change of the Hex color EB3463 by changing the saturation by 10% instead.



 EB3463

 EB3463

FFFFFF

 CB004B

 FF7395

 AC0035

 FF91B0

 8D0021

 FFAECB

 6F000A

 FFCBE7

 510003

 FFE9FF

 320002

 000000

 EB3463

 EB3463

 EB1D52

 EB4C74

 EB0540

 EB6386

 EB003C

 EB7B97

 EB92A9

 EBAABA

 EBC1CC

 EBD9DD

 EBF0EF

 EBFFFF

# Harmonies

## Analogous

The Analogous color harmony consists of three colors that are next to each other on the color wheel.



DC3BA1



EB3463



DA5127

# Triad

The Triadic color harmony groups three colors that are evenly spaced from another and form a triangle on the color wheel.



EB3463



2B9214



008FF8

# Complementary

The Complementary color scheme is a pair of colors which are on the opposite of each other on the color wheel.



EB3463



34EBBC

# Split Complementary

Split-complementary colors differ from the complementary color scheme. The scheme consists of three colors, the original color and two neighbors of the complement color.



0098D5



EB3463



00985B

# Square

The Square scheme is like the rectangle color scheme, but the four colors are evenly spaced on the color wheel.



EB3463



7D8500



009A9C



007CF9

# Rectangle

The Rectangle color scheme consists of four colors that form a rectangle on the color wheel.



EB3463



C26600



009A9C



0093F0



# Sweetspot

The Sweet Spot groups the original color and five complimentary colors.



EB3463



FFC4D3



BA34EB



805C65



000000



808080



# Same Dimension

The Same Dimension uses a secret algorithm to generate beautiful new colors.



EB3463



FF124F



EB5F34



756A6D



B5002E



36000E



# Inverse Universe

The Inverse Universe completely reimagines the original color for something new.



EB3463



FF124F



34C0EB



756A6D



B5002E



36000E



# Previews

## White Background



This preview shows how the Hex color EB3463 looks on a white background.

## Color Contrast Check

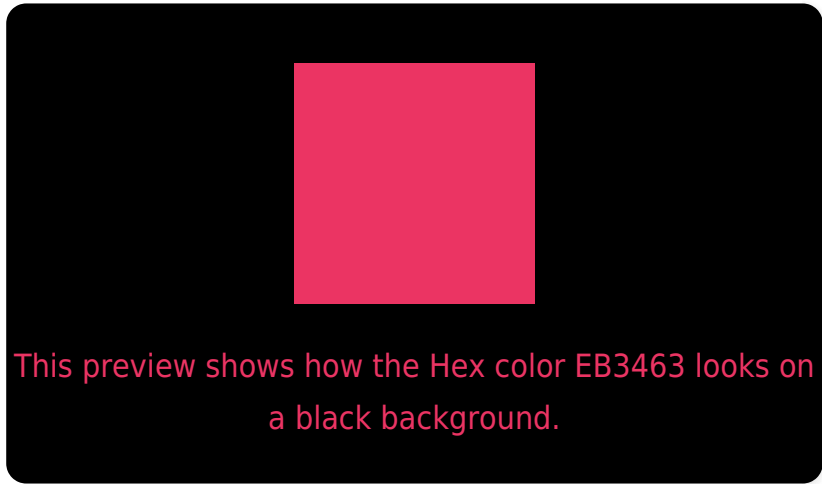
Large Text (above 18pt) WCAG AA ✓ Pass

Any Text WCAG AA × Fail

Large Text (above 18pt) WCAG AAA × Fail

Any Text WCAG AAA × Fail

# Black Background



## Color Contrast Check

Large Text (above 18pt) WCAG AA ✓ Pass

Any Text WCAG AA ✓ Pass

Large Text (above 18pt) WCAG AAA ✓ Pass

Any Text WCAG AAA × Fail

If you want to check with other color combinations, try the [Color Contrast Checker](#).



## Hex EB3463 Background



This preview shows how black text looks on a background with the Hex color EB3463.



This preview shows how white text looks on a background with the Hex color EB3463.

# Color Blindness Simulation

Color vision deficiency is a very complex topic, and I could not describe the different causes any better than Wikipedia does, so if you want to learn more, you should check out their [article about color blindness](#).

## Dichromacy



**Original Color**  
EB3463

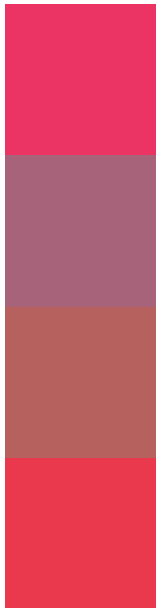
**Protanopia**  
7F7E86

**Deuteranopia**  
977A5A



**Tritanopia**  
E93C3F

# Trichromacy



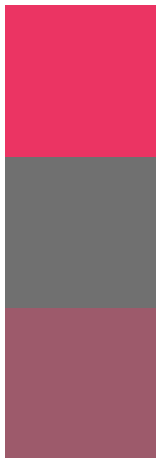
**Original Color**  
EB3463

**Protanomaly**  
A66379

**Deuteranomaly**  
B6615D

**Tritanomaly**  
EA394C

# Monochromacy



**Original Color**  
EB3463

**Achromatopsia**  
707070

**Achromatomaly**  
9D5A6B

# CSS Examples

## Text

The CSS property to change the color of the text to Hex EB3463 is called "color". The color property can be set on classes, ids or directly on the HTML element.

This example shows how text in the color #EB3463 looks like.

```
.text, #text, p{  
    color:#EB3463  
}
```

If you want to add a text shadow in that color use the text-shadow property, you can generate a text shadow directly with our [CSS Text Shadow Generator](#).

Here you see how black text with a 4 pixel #EB3463 colored shadow looks like.

```
.shadow{ text-shadow: 4px 4px 2px #EB3463
}
```

## Border

The CSS property to change the border of an element to Hex EB3463 is called "border". The border property can be set on classes, ids or directly on the HTML element.

This example shows the color as border, it can be applied via the CSS property "border" or "border-color".

```
.border, #border, table{ border:4px solid
#EB3463 }
```

If only the border color should be changed use the property `border-color`.

```
.border{ border-color:#EB3463 }
```

If you want to add a box shadow in that color use:

Here you see how a box with a 4 pixel #EB3463 colored shadow looks like.

```
.boxshadow{ -moz-box-shadow:4px 4px 4px  
4px #EB3463; -webkit-box-shadow:4px 4px  
4px 4px #EB3463; box-shadow:4px 4px 4px  
4px #EB3463 }
```

# Background

The CSS property to change the background color of an element to Hex EB3463 is called "background". The background property can be set on classes, ids or directly on the HTML element.

```
.background, #background, body{  
background:#EB3463 }
```

If only the background color should be changed can be used:

```
.background{ background-color:#EB3463 }
```

This example shows the color as background, it is applied via the CSS property "background".

To optimize and compress your CSS code, you can use our [online CSS compressor and optimizer](#) based on csstidy. If you want to create a linear or radial gradient as background or border, check our [CSS Gradient Generator](#).



Hey! You found this booklet interesting? Support Converting Colors with the new Membership Option!

The pro membership hides all ads, plus gives you double the colors in the color bucket, and more awesome pro features!

**[Learn more, Memberships starting at \\$2.50/m!](#)**

**Follow me  
on Twitter!**

@ConvertingColor