

# Converting Colors

Hex(EB3B78)

Have a look what the booklet for  
Hex(EB3B78) contains.

<b>Hex(EB3B78)</b> .....	3
<i><b>Conversions</b></i> .....	4
<i><b>Details</b></i> .....	6
<i><b>Harmonies</b></i> .....	11
<i><b>Previews</b></i> .....	23
<i><b>Color Blindness Simulation</b></i> .....	26
<i><b>CSS Examples</b></i> .....	29

**Color**

**Hex(EB3B78)**

# Conversions

## Conversions Part 1

<b>Format</b>	<b>Color</b>
Hex	EB3B78
RGB	235, 59, 120
RGB Percent	92%, 23%, 47%
CMY	0.0784, 0.7686, 0.5294
CMYK	0.00, 0.75, 0.49, 0.08
HSL	339°, 81%, 58%
HSV	339°, 75%, 92%
XYZ	39.2151, 22.1462, 19.9771
YIQ	118.5780, 85.3150, 56.2830

# Conversions

## Conversions Part 2

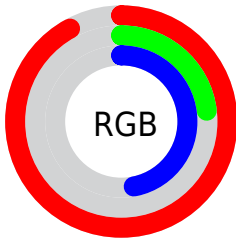
<b>Format</b>	<b>Color</b>
<b>R<sub>YB</sub></b>	235, 59, 120
Decimal	15416184
CIE <sub>Lab</sub>	54.18, 69.72, 7.36
CIE <sub>LCh</sub>	54, 70.107, 6.024
Yxy	22.1462, 0.4821, 0.2723
Android (android.graphics.Color)	4293606264 (0xFFEB3B78)
YUV	118.5780, 0.7010, 102.1021
Hunter-Lab	47.0597, 66.3904, 7.7729

# Details

The Hex color **EB3B78** is a dark color, and the websafe version is hex **CC3366**. The color can be described as middle washed rose. A complement of this color would be **3BEBAE**, and the grayscale version is **777777**.

A 20% lighter version of the original color is **FF79AC**, and **AD0048** is the 20% darker color. If you saturate the color by 10%, you get **EB2369**, and if you desaturate by 10%, it is **EB5287**.

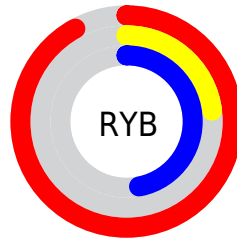
# Distribution



Red (92%)

Green (23%)

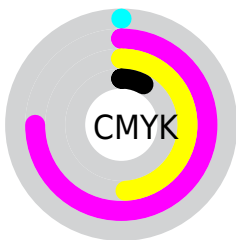
Blue (47%)



Red (92%)

Yellow (23%)

Blue (47%)

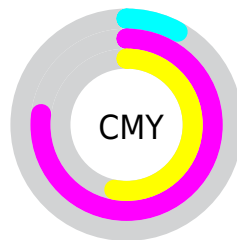


Cyan (0%)

Magenta (75%)

Yellow (49%)

Black (8%)



Cyan (8%)

Magenta (77%)

Yellow (53%)

# Brightness & Saturation Gradients

These gradients show how the Hex color EB3B78 changes by changing the brightness by 10 percent. The first figure shows a shift by +10% for each color and the second figure -10%.

Similar to the brightness gradients but the following saturation gradients show a change of the Hex color EB3B78 by changing the saturation by 10% instead.



 EB3B78

 EB3B78

FFFFFF

 CC0E5F

 FF79AC

 AD0048

 FF96C7

 8F0032

 FFB3E3

 70001D

 FFD1FF

 540002

 FFEFFF

 350002

 040000

 000000

 EB3B78

 EB3B78

 EB2369

 EB5287

 EB0C59

 EB6A97

 EB0051

 EB82A6

 EB99B5

 EBB1C5

 EBC8D4

 EBDFE3

 EBF7F3

 EBFFFF

# Harmonies

## Analogous

The Analogous color harmony consists of three colors that are next to each other on the color wheel.



D24CB4



EB3B78



E34E3E

# Triad

The Triadic color harmony groups three colors that are evenly spaced from another and form a triangle on the color wheel.



EB3B78



509202



0095F0

# Complementary

The Complementary color scheme is a pair of colors which are on the opposite of each other on the color wheel.



EB3B78



3BEBAE

# Split Complementary

Split-complementary colors differ from the complementary color scheme. The scheme consists of three colors, the original color and two neighbors of the complement color.



009CC8



EB3B78



00994D

# Square

The Square scheme is like the rectangle color scheme, but the four colors are evenly spaced on the color wheel.



EB3B78



918300



009C8D



0085FB

# Rectangle

The Rectangle color scheme consists of four colors that form a rectangle on the color wheel.



EB3B78



CF6215



009C8D



0098E6



# Sweetspot

The Sweet Spot groups the original color and five complimentary colors.



EB3B78



FFC7DA



AD3BEB



805E6A



000000



808080



# Same Dimension

The Same Dimension uses a secret algorithm to generate beautiful new colors.



EB3B78



FF1969



EB553B



756A6E



B5003F



360013



# Inverse Universe

The Inverse Universe completely reimagines the original color for something new.



EB3B78



FF1969



3BD1EB



756A6E



B5003F



360013



# Previews

## White Background



This preview shows how the Hex color EB3B78 looks on a white background.

## Color Contrast Check

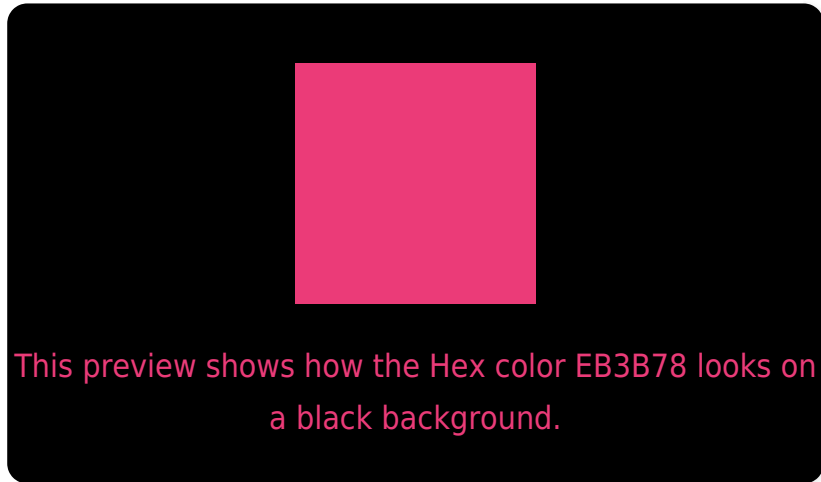
Large Text (above 18pt) WCAG AA ✓ Pass

Any Text WCAG AA × Fail

Large Text (above 18pt) WCAG AAA × Fail

Any Text WCAG AAA × Fail

# Black Background



## Color Contrast Check

Large Text (above 18pt) WCAG AA ✓ Pass

Any Text WCAG AA ✓ Pass

Large Text (above 18pt) WCAG AAA ✓ Pass

Any Text WCAG AAA × Fail

If you want to check with other color combinations, try the [Color Contrast Checker](#).



## Hex EB3B78 Background



This preview shows how black text looks on a background with the Hex color EB3B78.

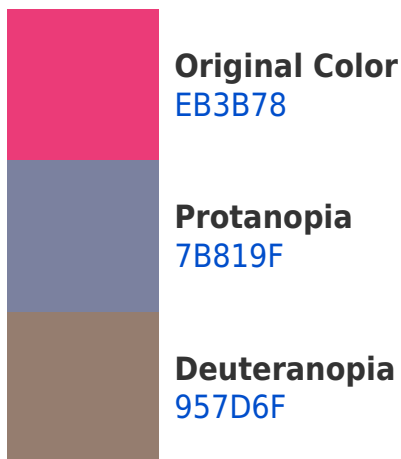



This preview shows how white text looks on a background with the Hex color EB3B78.

# Color Blindness Simulation

Color vision deficiency is a very complex topic, and I could not describe the different causes any better than Wikipedia does, so if you want to learn more, you should check out their [article about color blindness](#).

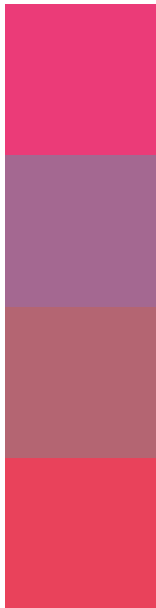
## Dichromacy





**Tritanopia**  
E8464A

# Trichromacy



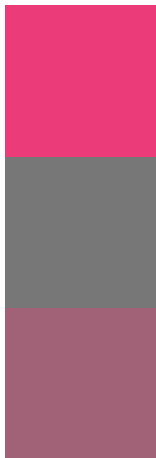
**Original Color**  
EB3B78

**Protanomaly**  
A46891

**Deuteranomaly**  
B46572

**Tritanomaly**  
E9425B

# Monochromacy



**Original Color**  
EB3B78

**Achromatopsia**  
777777

**Achromatomaly**  
A16177

# CSS Examples

## Text

The CSS property to change the color of the text to Hex EB3B78 is called "color". The color property can be set on classes, ids or directly on the HTML element.

This example shows how text in the color #EB3B78 looks like.

```
.text, #text, p{  
    color:#EB3B78  
}
```

If you want to add a text shadow in that color use the text-shadow property, you can generate a text shadow directly with our [CSS Text Shadow Generator](#).

Here you see how black text with a 4 pixel #EB3B78 colored shadow looks like.

```
.shadow{ text-shadow: 4px 4px 2px #EB3B78
}
```

## Border

The CSS property to change the border of an element to Hex EB3B78 is called "border". The border property can be set on classes, ids or directly on the HTML element.

This example shows the color as border, it can be applied via the CSS property "border" or "border-color".

```
.border, #border, table{ border:4px solid
#EB3B78 }
```

If only the border color should be changed use the property `border-color`.

```
.border{ border-color:#EB3B78 }
```

If you want to add a box shadow in that color use:

Here you see how a box with a 4 pixel #EB3B78 colored shadow looks like.

```
.boxshadow{ -moz-box-shadow:4px 4px 4px  
4px #EB3B78; -webkit-box-shadow:4px 4px  
4px 4px #EB3B78; box-shadow:4px 4px 4px  
4px #EB3B78 }
```

# Background

The CSS property to change the background color of an element to Hex EB3B78 is called "background". The background property can be set on classes, ids or directly on the HTML element.

```
.background, #background, body{  
background:#EB3B78 }
```

If only the background color should be changed can be used:

```
.background{ background-color:#EB3B78 }
```

This example shows the color as background, it is applied via the CSS property "background".

To optimize and compress your CSS code, you can use our [online CSS compressor and optimizer](#) based on csstidy. If you want to create a linear or radial gradient as background or border, check our [CSS Gradient Generator](#).



Hey! You found this booklet interesting? Support Converting Colors with the new Membership Option!

The pro membership hides all ads, plus gives you double the colors in the color bucket, and more awesome pro features!

**[Learn more, Memberships starting at \\$2.50/m!](#)**

**Follow me  
on Twitter!**

@ConvertingColor