

Converting Colors

Hex(EB4C7B)

Have a look what the booklet for
Hex(EB4C7B) contains.

Hex(EB4C7B)	3
<i>Conversions</i>	4
<i>Details</i>	6
<i>Harmonies</i>	11
<i>Previews</i>	23
<i>Color Blindness Simulation</i>	26
<i>CSS Examples</i>	29

Color

Hex(EB4C7B)

Conversions

Conversions Part 1

Format	Color
Hex	EB4C7B
RGB	235, 76, 123
RGB Percent	92%, 30%, 48%
CMY	0.0784, 0.7020, 0.5176
CMYK	0.00, 0.68, 0.48, 0.08
HSL	342°, 80%, 61%
HSV	342°, 68%, 92%
XYZ	40.4205, 24.2611, 21.2914
YIQ	128.8990, 79.6770, 48.3250

Conversions

Conversions Part 2

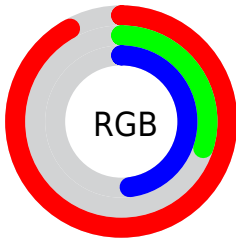
Format	Color
R_{YB}	235, 76, 123
Decimal	15420539
CIE _{Lab}	56.35, 64.16, 8.65
CIE _{LCh}	56, 64.738, 7.681
Yxy	24.2611, 0.4702, 0.2822
Android (android.graphics.Color)	4293610619 (0xFFEB4C7B)
YUV	128.8990, -2.9082, 93.0506
Hunter-Lab	49.2556, 60.2850, 8.8500

Details

The Hex color **EB4C7B** is a dark color, and the websafe version is hex **CC3366**. The color can be described as middle muted rose. A complement of this color would be **4CEBBC**, and the grayscale version is **818181**.

A 20% lighter version of the original color is **FF86AF**, and **AE004B** is the 20% darker color. If you saturate the color by 10%, you get **EB346A**, and if you desaturate by 10%, it is **EB648C**.

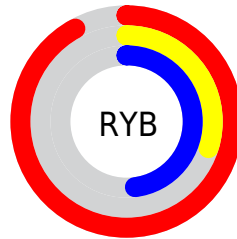
Distribution



Red (92%)

Green (30%)

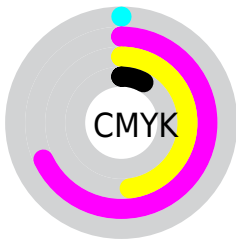
Blue (48%)



Red (92%)

Yellow (30%)

Blue (48%)

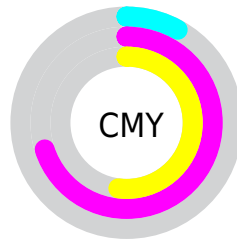


Cyan (0%)

Magenta (68%)

Yellow (48%)

Black (8%)



Cyan (8%)

Magenta (70%)

Yellow (52%)

Brightness & Saturation Gradients

These gradients show how the Hex color EB4C7B changes by changing the brightness by 10 percent. The first figure shows a shift by +10% for each color and the second figure -10%.

Similar to the brightness gradients but the following saturation gradients show a change of the Hex color EB4C7B by changing the saturation by 10% instead.

 EB4C7B

 EB4C7B

FFFFFF

 CC2C62

 FF86AF

 AE004B

 FFA3CB

 900034

 FFC0E7

 720020

 FFDDFF

 550007

 FFFBFF

 380002

 0D0000

 000000

 EB4C7B

 EB4C7B

 EB346A

 EB648C

 EB1D5A

 EB7B9C

 EB0549

 EB93AD

 EB0045

 EBAABD

 EBC1CE

 EBD9DE

 EBF0EF

 EBFFFF

Harmonies

Analogous

The Analogous color harmony consists of three colors that are next to each other on the color wheel.



D557B3



EB4C7B



E35C45

Triad

The Triadic color harmony groups three colors that are evenly spaced from another and form a triangle on the color wheel.



EB4C7B



589722



0098EF

Complementary

The Complementary color scheme is a pair of colors which are on the opposite of each other on the color wheel.



EB4C7B



4CEBBC

Split Complementary

Split-complementary colors differ from the complementary color scheme. The scheme consists of three colors, the original color and two neighbors of the complement color.



00A0CB



EB4C7B



009E5A

Square

The Square scheme is like the rectangle color scheme, but the four colors are evenly spaced on the color wheel.



EB4C7B



958900



00A195



0089F7

Rectangle

The Rectangle color scheme consists of four colors that form a rectangle on the color wheel.



EB4C7B



D06C24



00A195



009CE6

Sweetspot

The Sweet Spot groups the original color and five complimentary colors.



EB4C7B



FFCCDB



BB4CEB



80616A



000000



808080

Same Dimension

The Same Dimension uses a secret algorithm to generate beautiful new colors.



EB4C7B



FF306E



EB6C4C



756A6D



B50036



360010

Inverse Universe

The Inverse Universe completely reimagines the original color for something new.



EB4C7B



FF306E



4CCBEB



756A6D



B50036



360010

Previews

White Background



This preview shows how the Hex color EB4C7B looks on a white background.

Color Contrast Check

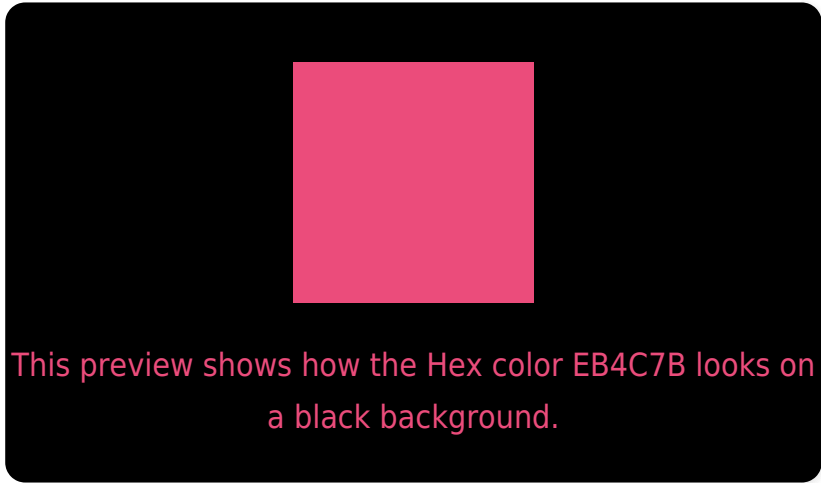
Large Text (above 18pt) WCAG AA ✓ Pass

Any Text WCAG AA ✗ Fail

Large Text (above 18pt) WCAG AAA ✗ Fail

Any Text WCAG AAA ✗ Fail

Black Background



Color Contrast Check

Large Text (above 18pt) WCAG AA ✓ Pass

Any Text WCAG AA ✓ Pass

Large Text (above 18pt) WCAG AAA ✓ Pass

Any Text WCAG AAA × Fail

If you want to check with other color combinations, try the [Color Contrast Checker](#).

Hex EB4C7B Background



This preview shows how black text looks on a background with the Hex color EB4C7B.



This preview shows how white text looks on a background with the Hex color EB4C7B.

Color Blindness Simulation

Color vision deficiency is a very complex topic, and I could not describe the different causes any better than Wikipedia does, so if you want to learn more, you should check out their [article about color blindness](#).

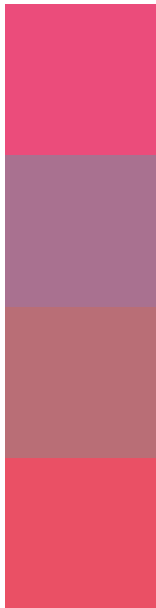
Dichromacy





Tritanopia
E95358

Trichromacy



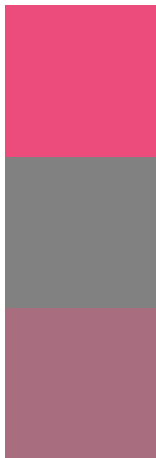
Original Color
EB4C7B

Protanomaly
A97190

Deuteranomaly
B96E76

Tritanomaly
EA5065

Monochromacy



Original Color
EB4C7B

Achromatopsia
818181

Achromatomaly
A86E7F

CSS Examples

Text

The CSS property to change the color of the text to Hex EB4C7B is called "color". The color property can be set on classes, ids or directly on the HTML element.

This example shows how text in the color #EB4C7B looks like.

```
.text, #text, p{  
    color:#EB4C7B  
}
```

If you want to add a text shadow in that color use the text-shadow property, you can generate a text shadow directly with our [CSS Text Shadow Generator](#).

Here you see how black text with a 4 pixel #EB4C7B colored shadow looks like.

```
.shadow{ text-shadow: 4px 4px 2px #EB4C7B
}
```

Border

The CSS property to change the border of an element to Hex EB4C7B is called "border". The border property can be set on classes, ids or directly on the HTML element.

This example shows the color as border, it can be applied via the CSS property "border" or "border-color".

```
.border, #border, table{ border:4px solid
#EB4C7B }
```

If only the border color should be changed use the property `border-color`.

```
.border{ border-color:#EB4C7B }
```

If you want to add a box shadow in that color use:

Here you see how a box with a 4 pixel #EB4C7B colored shadow looks like.

```
.boxshadow{ -moz-box-shadow:4px 4px 4px  
4px #EB4C7B; -webkit-box-shadow:4px 4px  
4px 4px #EB4C7B; box-shadow:4px 4px 4px  
4px #EB4C7B }
```

Background

The CSS property to change the background color of an element to Hex EB4C7B is called "background". The background property can be set on classes, ids or directly on the HTML element.

```
.background, #background, body{  
background:#EB4C7B }
```

If only the background color should be changed can be used:

```
.background{ background-color:#EB4C7B }
```

This example shows the color as background, it is applied via the CSS property "background".

To optimize and compress your CSS code, you can use our [online CSS compressor and optimizer](#) based on csstidy. If you want to create a linear or radial gradient as background or border, check our [CSS Gradient Generator](#).

Hey! You found this booklet interesting? Support Converting Colors with the new Membership Option!

The pro membership hides all ads, plus gives you double the colors in the color bucket, and more awesome pro features!

[Learn more, Memberships starting at \\$2.50/m!](#)

**Follow me
on Twitter!**

@ConvertingColor