

Converting Colors

Hex(EB4D75)

Have a look what the booklet for
Hex(EB4D75) contains.

Hex(EB4D75)	3
<i>Conversions</i>	4
<i>Details</i>	6
<i>Harmonies</i>	11
<i>Previews</i>	23
<i>Color Blindness Simulation</i>	26
<i>CSS Examples</i>	29

Color

Hex(EB4D75)

Conversions

Conversions Part 1

Format	Color
Hex	EB4D75
RGB	235, 77, 117
RGB Percent	92%, 30%, 46%
CMY	0.0784, 0.6980, 0.5412
CMYK	0.00, 0.67, 0.50, 0.08
HSL	345°, 80%, 61%
HSV	345°, 67%, 92%
XYZ	40.1257, 24.2543, 19.3963
YIQ	128.8020, 81.3280, 45.9360

Conversions

Conversions Part 2

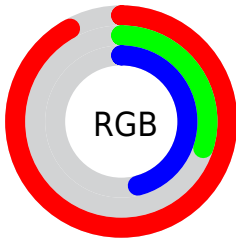
Format	Color
R_{YB}	235, 77, 117
Decimal	15420789
CIE _{Lab}	56.34, 63.27, 12.19
CIE _{LCh}	56, 64.434, 10.908
Y _{xy}	24.2543, 0.4790, 0.2895
Android (android.graphics.Color)	4293610869 (0xFFEB4D75)
Y _{UV}	128.8020, -5.8184, 93.1356
Hunter-Lab	49.2486, 59.2492, 11.1230

Details

The Hex color **EB4D75** is a dark color, and the websafe version is hex **CC3366**. The color can be described as middle muted rose. A complement of this color would be **4DEBC3**, and the grayscale version is **818181**.

A 20% lighter version of the original color is **FF87A9**, and **AD0045** is the 20% darker color. If you saturate the color by 10%, you get **EB3563**, and if you desaturate by 10%, it is **EB6487**.

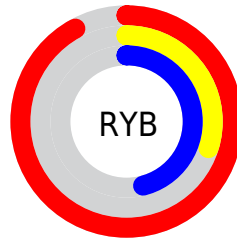
Distribution



Red (92%)

Green (30%)

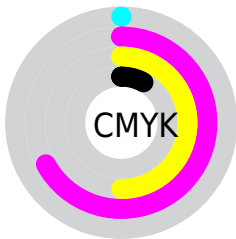
Blue (46%)



Red (92%)

Yellow (30%)

Blue (46%)

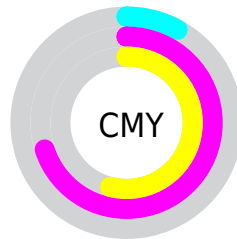


Cyan (0%)

Magenta (67%)

Yellow (50%)

Black (8%)



Cyan (8%)

Magenta (70%)

Yellow (54%)

Brightness & Saturation Gradients

These gradients show how the Hex color EB4D75 changes by changing the brightness by 10 percent. The first figure shows a shift by +10% for each color and the second figure -10%.

Similar to the brightness gradients but the following saturation gradients show a change of the Hex color EB4D75 by changing the saturation by 10% instead.

 EB4D75

 EB4D75

FFFFFF

 CC2D5D

 FF87A9

 AD0045

 FFA3C4

 8F002F

 FFC0E0

 71001B

 FFDEFC

 540001

 FFFBFF

 380002

 0B0000

 000000

 EB4D75

 EB4D75

 EB3563

 EB6487

 EB1E52

 EB7C98

 EB0640

 EB93AA

 EB003B

 EBABBB

 EBC2CD

 EBDAAE

 EBF1F0

 EBFFFF

Harmonies

Analogous

The Analogous color harmony consists of three colors that are next to each other on the color wheel.



D955AD



EB4D75



E05E40

Triad

The Triadic color harmony groups three colors that are evenly spaced from another and form a triangle on the color wheel.



EB4D75



509829



0097F1

Complementary

The Complementary color scheme is a pair of colors which are on the opposite of each other on the color wheel.



EB4D75



4DEBC3

Split Complementary

Split-complementary colors differ from the complementary color scheme. The scheme consists of three colors, the original color and two neighbors of the complement color.



009FCF



EB4D75



009F60

Square

The Square scheme is like the rectangle color scheme, but the four colors are evenly spaced on the color wheel.



EB4D75



8F8B00



00A19B



2087F6

Rectangle

The Rectangle color scheme consists of four colors that form a rectangle on the color wheel.



EB4D75



CC6F1F



00A19B



009BE9

Sweetspot

The Sweet Spot groups the original color and five complimentary colors.



EB4D75



FFCCD9



C14DEB



806169



000000



808080

Same Dimension

The Same Dimension uses a secret algorithm to generate beautiful new colors.



EB4D75



FF3065



EB724D



756A6D



B5002E



36000E

Inverse Universe

The Inverse Universe completely reimagines the original color for something new.



EB4D75



FF3065



4DC6EB



756A6D



B5002E



36000E

Previews

White Background



This preview shows how the Hex color EB4D75 looks on a white background.

Color Contrast Check

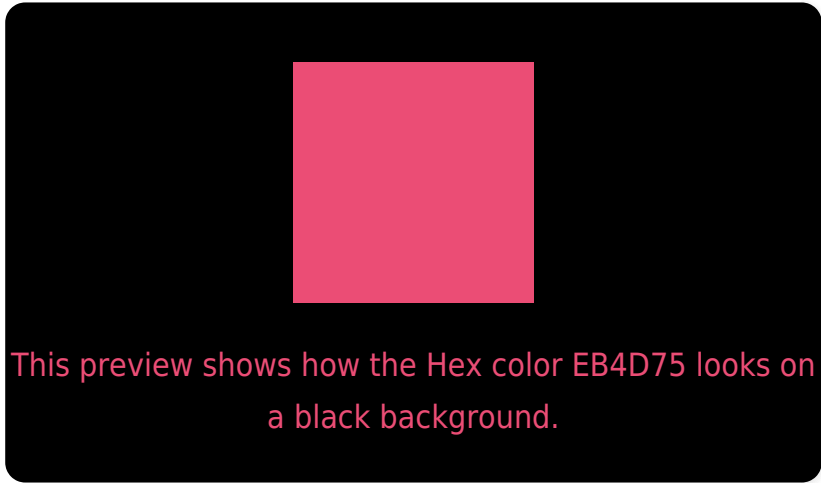
Large Text (above 18pt) WCAG AA ✓ Pass

Any Text WCAG AA ✗ Fail

Large Text (above 18pt) WCAG AAA ✗ Fail

Any Text WCAG AAA ✗ Fail

Black Background



Color Contrast Check

Large Text (above 18pt) WCAG AA ✓ Pass

Any Text WCAG AA ✓ Pass

Large Text (above 18pt) WCAG AAA ✓ Pass

Any Text WCAG AAA × Fail

If you want to check with other color combinations, try the [Color Contrast Checker](#).

Hex EB4D75 Background



This preview shows how black text looks on a background with the Hex color EB4D75.

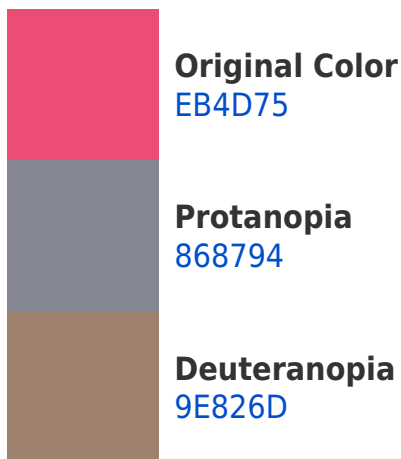



This preview shows how white text looks on a background with the Hex color EB4D75.

Color Blindness Simulation

Color vision deficiency is a very complex topic, and I could not describe the different causes any better than Wikipedia does, so if you want to learn more, you should check out their [article about color blindness](#).

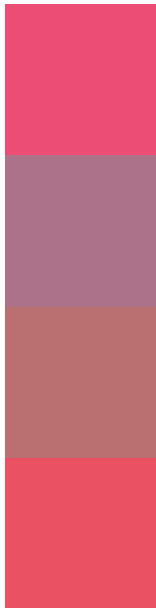
Dichromacy





Tritanopia
E95358

Trichromacy



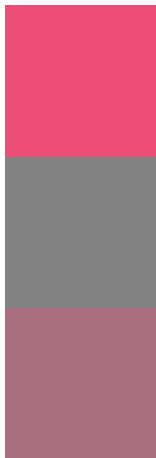
Original Color
EB4D75

Protanomaly
AB7289

Deuteranomaly
BA6F70

Tritanomaly
EA5163

Monochromacy



Original Color
EB4D75

Achromatopsia
818181

Achromatomaly
A86E7D

CSS Examples

Text

The CSS property to change the color of the text to Hex EB4D75 is called "color". The color property can be set on classes, ids or directly on the HTML element.

This example shows how text in the color #EB4D75 looks like.

```
.text, #text, p{
  color:#EB4D75
}
```

If you want to add a text shadow in that color use the text-shadow property, you can generate a text shadow directly with our [CSS Text Shadow Generator](#).

Here you see how black text with a 4 pixel #EB4D75 colored shadow looks like.

```
.shadow{ text-shadow: 4px 4px 2px #EB4D75
}
```

Border

The CSS property to change the border of an element to Hex EB4D75 is called "border". The border property can be set on classes, ids or directly on the HTML element.

This example shows the color as border, it can be applied via the CSS property "border" or "border-color".

```
.border, #border, table{ border:4px solid
#EB4D75 }
```

If only the border color should be changed use the property `border-color`.

```
.border{ border-color:#EB4D75 }
```

If you want to add a box shadow in that color use:

Here you see how a box with a 4 pixel #EB4D75 colored shadow looks like.

```
.boxshadow{ -moz-box-shadow:4px 4px 4px  
4px #EB4D75; -webkit-box-shadow:4px 4px  
4px 4px #EB4D75; box-shadow:4px 4px 4px  
4px #EB4D75 }
```

Background

The CSS property to change the background color of an element to Hex EB4D75 is called "background". The background property can be set on classes, ids or directly on the HTML element.

```
.background, #background, body{  
background:#EB4D75 }
```

If only the background color should be changed can be used:

```
.background{ background-color:#EB4D75 }
```

This example shows the color as background, it is applied via the CSS property "background".

To optimize and compress your CSS code, you can use our [online CSS compressor and optimizer](#) based on csstidy. If you want to create a linear or radial gradient as background or border, check our [CSS Gradient Generator](#).

Hey! You found this booklet interesting? Support Converting Colors with the new Membership Option!

The pro membership hides all ads, plus gives you double the colors in the color bucket, and more awesome pro features!

[Learn more, Memberships starting at \\$2.50/m!](#)

**Follow me
on Twitter!**

@ConvertingColor