

# Converting Colors

Hex(EB507E)

Have a look what the booklet for  
Hex(EB507E) contains.

<b>Hex(EB507E)</b> .....	3
<i><b>Conversions</b></i> .....	4
<i><b>Details</b></i> .....	6
<i><b>Harmonies</b></i> .....	11
<i><b>Previews</b></i> .....	23
<i><b>Color Blindness Simulation</b></i> .....	26
<i><b>CSS Examples</b></i> .....	29

# Color

Hex(EB507E)

# Conversions

## Conversions Part 1

Format	Color
Hex	EB507E
RGB	235, 80, 126
RGB Percent	92%, 31%, 49%
CMY	0.0784, 0.6863, 0.5059
CMYK	0.00, 0.66, 0.46, 0.08
HSL	342°, 79%, 62%
HSV	342°, 66%, 92%
XYZ	40.8955, 24.9058, 22.3905
YIQ	131.5890, 77.6140, 47.1660

# Conversions

## Conversions Part 2

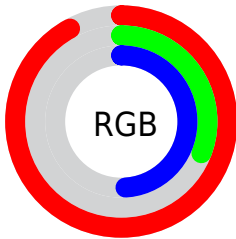
<b>Format</b>	<b>Color</b>
<b>R<sub>YB</sub></b>	235, 80, 126
Decimal	15421566
CIE <sub>Lab</sub>	56.98, 62.89, 7.78
CIE <sub>LCh</sub>	57, 63.366, 7.056
Yxy	24.9058, 0.4637, 0.2824
Android (android.graphics.Color)	4293611646 (0xFFEB507E)
YUV	131.5890, -2.7554, 90.6914
Hunter-Lab	49.9058, 58.9376, 8.3332

# Details

The Hex color **EB507E** is a dark color, and the websafe version is hex **FF6699**. The color can be described as middle muted rose. A complement of this color would be **50EBBD**, and the grayscale version is **848484**.

A 20% lighter version of the original color is **FF89B2**, and **AE004D** is the 20% darker color. If you saturate the color by 10%, you get **EB386D**, and if you desaturate by 10%, it is **EB688F**.

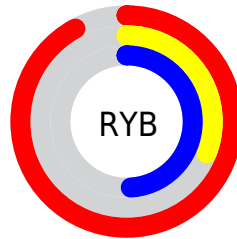
# Distribution



Red (92%)

Green (31%)

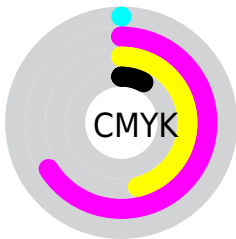
Blue (49%)



Red (92%)

Yellow (31%)

Blue (49%)

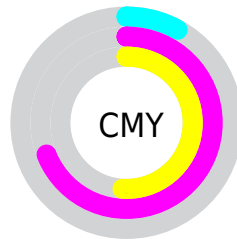


Cyan (0%)

Magenta (66%)

Yellow (46%)

Black (8%)



Cyan (8%)

Magenta (69%)

Yellow (51%)

# Brightness & Saturation Gradients

These gradients show how the Hex color EB507E changes by changing the brightness by 10 percent. The first figure shows a shift by +10% for each color and the second figure -10%.

Similar to the brightness gradients but the following saturation gradients show a change of the Hex color EB507E by changing the saturation by 10% instead.



 EB507E

 EB507E

FFFFFF

 CC3165

 FF89B2

 AE004D

 FFA6CE

 900037

 FFC3EA

 720022

 FFE0FF

 55000B

FFFEFF

 390002

 100000

 000000

 EB507E

 EB507E

 EB386D

 EB688F

 EB215D

 EB7F9F

 EB0A4C

 EB96B0

 EB0046

 EBAEC0

 EBC6D1

 EBDDE1

 EBF4F2

 EBFFFF

# Harmonies

## Analogous

The Analogous color harmony consists of three colors that are next to each other on the color wheel.



D55BB5



EB507E



E35E49

# Triad

The Triadic color harmony groups three colors that are evenly spaced from another and form a triangle on the color wheel.



EB507E



5D9826



009AEE

# Complementary

The Complementary color scheme is a pair of colors which are on the opposite of each other on the color wheel.



EB507E



50EBBD

# Split Complementary

Split-complementary colors differ from the complementary color scheme. The scheme consists of three colors, the original color and two neighbors of the complement color.



00A1CA



EB507E



009F5B

# Square

The Square scheme is like the rectangle color scheme, but the four colors are evenly spaced on the color wheel.



EB507E



988A00



00A295



008BF7

# Rectangle

The Rectangle color scheme consists of four colors that form a rectangle on the color wheel.



EB507E



D16E29



00A295



009DE5



# Sweetspot

The Sweet Spot groups the original color and five complimentary colors.



EB507E



FFCCDB



BD50EB



80616A



000000



808080



# Same Dimension

The Same Dimension uses a secret algorithm to generate beautiful new colors.



EB507E



FF3671



EB6F50



756A6D



B50036



360010



# Inverse Universe

The Inverse Universe completely reimagines the original color for something new.



EB507E



FF3671



50CCEB



756A6D



B50036

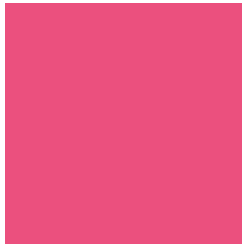


360010



# Previews

## White Background



This preview shows how the Hex color EB507E looks on a white background.

## Color Contrast Check

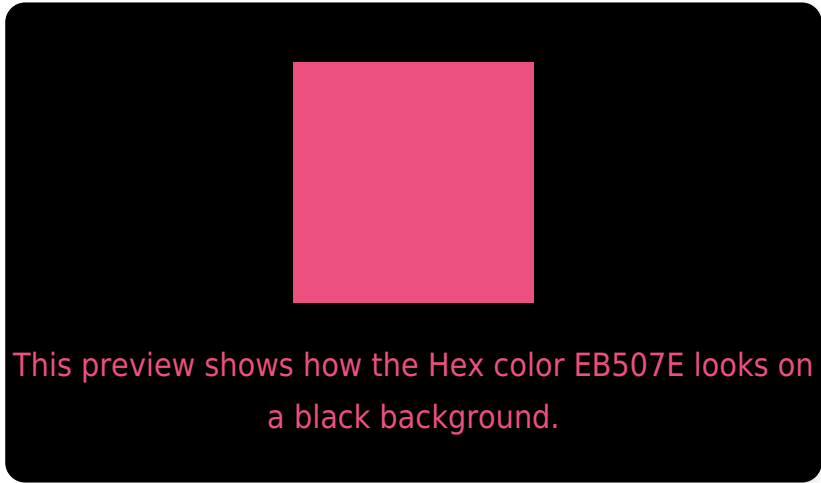
Large Text (above 18pt) WCAG AA ✓ Pass

Any Text WCAG AA × Fail

Large Text (above 18pt) WCAG AAA × Fail

Any Text WCAG AAA × Fail

# Black Background



## Color Contrast Check

Large Text (above 18pt) WCAG AA ✓ Pass

Any Text WCAG AA ✓ Pass

Large Text (above 18pt) WCAG AAA ✓ Pass

Any Text WCAG AAA × Fail

If you want to check with other color combinations, try the [Color Contrast Checker](#).



## Hex EB507E Background



This preview shows how black text looks on a background with the Hex color EB507E.

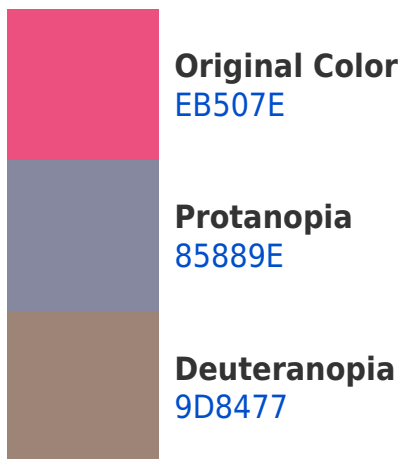


This preview shows how white text looks on a background with the Hex color EB507E.

# Color Blindness Simulation

Color vision deficiency is a very complex topic, and I could not describe the different causes any better than Wikipedia does, so if you want to learn more, you should check out their [article about color blindness](#).

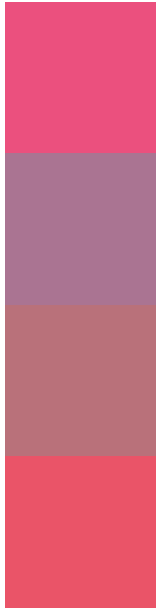
## Dichromacy





**Tritanopia**  
E9575C

# Trichromacy



**Original Color**  
EB507E

**Protanomaly**  
AA7492

**Deuteranomaly**  
B9717A

**Tritanomaly**  
EA5468

# Monochromacy



**Original Color**  
EB507E

**Achromatopsia**  
848484

**Achromatomaly**  
A97182

# CSS Examples

## Text

The CSS property to change the color of the text to Hex EB507E is called "color". The color property can be set on classes, ids or directly on the HTML element.

This example shows how text in the color #EB507E looks like.

```
.text, #text, p{  
    color:#EB507E  
}
```

If you want to add a text shadow in that color use the text-shadow property, you can generate a text shadow directly with our [CSS Text Shadow Generator](#).

Here you see how black text with a 4 pixel #EB507E colored shadow looks like.

```
.shadow{ text-shadow: 4px 4px 2px #EB507E
}
```

## Border

The CSS property to change the border of an element to Hex EB507E is called "border". The border property can be set on classes, ids or directly on the HTML element.

This example shows the color as border, it can be applied via the CSS property "border" or "border-color".

```
.border, #border, table{ border:4px solid
#EB507E }
```

If only the border color should be changed use the property `border-color`.

```
.border{ border-color:#EB507E }
```

If you want to add a box shadow in that color use:

Here you see how a box with a 4 pixel #EB507E colored shadow looks like.

```
.boxshadow{ -moz-box-shadow:4px 4px 4px  
4px #EB507E; -webkit-box-shadow:4px 4px  
4px 4px #EB507E; box-shadow:4px 4px 4px  
4px #EB507E }
```

# Background

The CSS property to change the background color of an element to Hex EB507E is called "background". The background property can be set on classes, ids or directly on the HTML element.

```
.background, #background, body{  
background:#EB507E }
```

If only the background color should be changed can be used:

```
.background{ background-color:#EB507E }
```

This example shows the color as background, it is applied via the CSS property "background".

To optimize and compress your CSS code, you can use our [online CSS compressor and optimizer](#) based on csstidy. If you want to create a linear or radial gradient as background or border, check our [CSS Gradient Generator](#).



Hey! You found this booklet interesting? Support Converting Colors with the new Membership Option!

The pro membership hides all ads, plus gives you double the colors in the color bucket, and more awesome pro features!

**[Learn more, Memberships starting at \\$2.50/m!](#)**

**Follow me  
on Twitter!**

@ConvertingColor