

# Converting Colors

Hex(EB527F)

Have a look what the booklet for  
Hex(EB527F) contains.

<b>Hex(EB527F)</b> .....	3
<i><b>Conversions</b></i> .....	4
<i><b>Details</b></i> .....	6
<i><b>Harmonies</b></i> .....	11
<i><b>Previews</b></i> .....	23
<i><b>Color Blindness Simulation</b></i> .....	26
<i><b>CSS Examples</b></i> .....	29

# Color

Hex(EB527F)

# Conversions

## Conversions Part 1

Format	Color
Hex	EB527F
RGB	235, 82, 127
RGB Percent	92%, 32%, 50%
CMY	0.0784, 0.6784, 0.5020
CMYK	0.00, 0.65, 0.46, 0.08
HSL	342°, 79%, 62%
HSV	342°, 65%, 92%
XYZ	41.1090, 25.2291, 22.7817
YIQ	132.8770, 76.7430, 46.4310

# Conversions

## Conversions Part 2

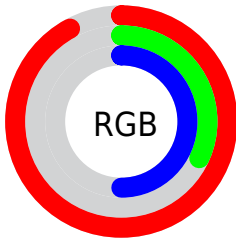
<b>Format</b>	<b>Color</b>
<b>R<sub>YB</sub></b>	235, 82, 127
Decimal	15422079
CIE <sub>Lab</sub>	57.30, 62.19, 7.64
CIE <sub>LCh</sub>	57, 62.654, 7.006
Yxy	25.2291, 0.4613, 0.2831
Android (android.graphics.Color)	4293612159 (0xFFEB527F)
YUV	132.8770, -2.8974, 89.5619
Hunter-Lab	50.2285, 58.1915, 8.2684

# Details

The Hex color **EB527F** is a dark color, and the websafe version is hex **FF6699**. The color can be described as middle muted rose. A complement of this color would be **52EBBE**, and the grayscale version is **858585**.

A 20% lighter version of the original color is **FF8BB4**, and **AE074E** is the 20% darker color. If you saturate the color by 10%, you get **EB3A6E**, and if you desaturate by 10%, it is **EB6A90**.

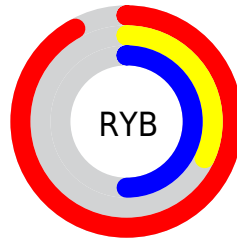
# Distribution



Red (92%)

Green (32%)

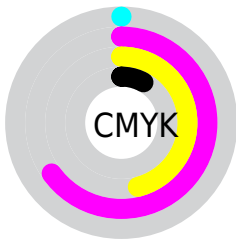
Blue (50%)



Red (92%)

Yellow (32%)

Blue (50%)

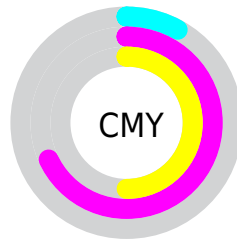


Cyan (0%)

Magenta (65%)

Yellow (46%)

Black (8%)



Cyan (8%)

Magenta (68%)

Yellow (50%)

# Brightness & Saturation Gradients

These gradients show how the Hex color EB527F changes by changing the brightness by 10 percent. The first figure shows a shift by +10% for each color and the second figure -10%.

Similar to the brightness gradients but the following saturation gradients show a change of the Hex color EB527F by changing the saturation by 10% instead.



 EB527F

 EB527F

FFFFFF

 CC3366

 FF8BB4

 AE074E

 FFA8CF

 900038

 FFC5EB

 720023

 FFE2FF

 55000C

 3A0002

 120000

 000000

 EB527F

 EB527F

 EB3A6E

 EB6A90

 EB235E

 EB81A0

 EB0C4D

 EB99B1

 EB0045

 EBB0C1

 EBC8D2

 EBDFE3

 EBF7F3

 EBFFFF

# Harmonies

## Analogous

The Analogous color harmony consists of three colors that are next to each other on the color wheel.



D55DB5



EB527F



E4604B

# Triad

The Triadic color harmony groups three colors that are evenly spaced from another and form a triangle on the color wheel.



EB527F



5E9928



009BEE

# Complementary

The Complementary color scheme is a pair of colors which are on the opposite of each other on the color wheel.



EB527F



52EBBE

# Split Complementary

Split-complementary colors differ from the complementary color scheme. The scheme consists of three colors, the original color and two neighbors of the complement color.



00A2CA



EB527F



00A05C

# Square

The Square scheme is like the rectangle color scheme, but the four colors are evenly spaced on the color wheel.



EB527F



998B00



00A395



008CF7

# Rectangle

The Rectangle color scheme consists of four colors that form a rectangle on the color wheel.



EB527F



D26F2B



00A395



009EE5



# Sweetspot

The Sweet Spot groups the original color and five complimentary colors.



EB527F



FFCCDB



BD52EB



80616A



000000



808080



# Same Dimension

The Same Dimension uses a secret algorithm to generate beautiful new colors.



EB527F



FF3873



EB7152



756A6D



B50035



360010



# Inverse Universe

The Inverse Universe completely reimagines the original color for something new.



EB527F



FF3873



52CCEB



756A6D



B50035



360010



# Previews

## White Background



This preview shows how the Hex color EB527F looks on a white background.

## Color Contrast Check

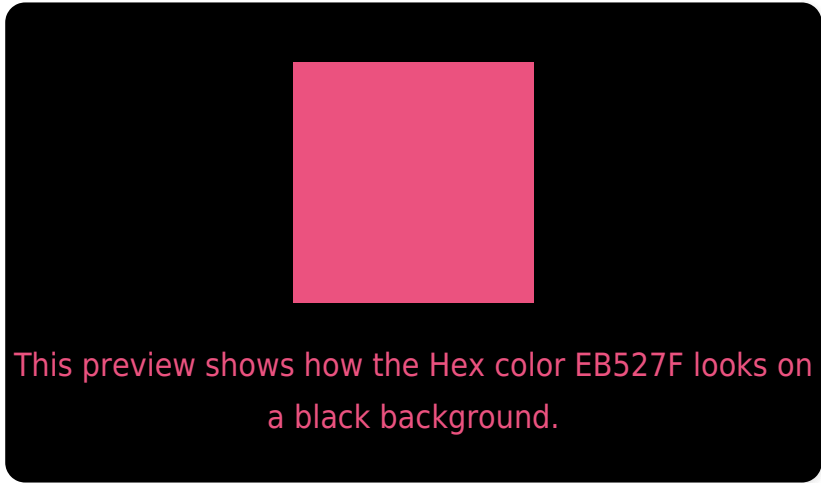
Large Text (above 18pt) WCAG AA ✓ Pass

Any Text WCAG AA × Fail

Large Text (above 18pt) WCAG AAA × Fail

Any Text WCAG AAA × Fail

# Black Background



## Color Contrast Check

Large Text (above 18pt) WCAG AA ✓ Pass

Any Text WCAG AA ✓ Pass

Large Text (above 18pt) WCAG AAA ✓ Pass

Any Text WCAG AAA × Fail

If you want to check with other color combinations, try the [Color Contrast Checker](#).



## Hex EB527F Background



This preview shows how black text looks on a background with the Hex color EB527F.

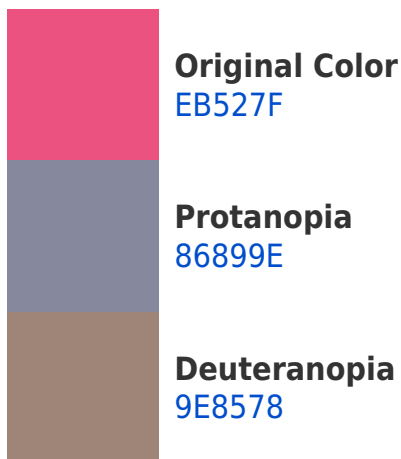


This preview shows how white text looks on a background with the Hex color EB527F.

# Color Blindness Simulation

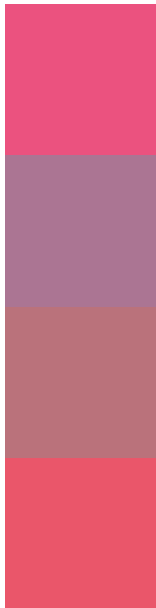
Color vision deficiency is a very complex topic, and I could not describe the different causes any better than Wikipedia does, so if you want to learn more, you should check out their [article about color blindness](#).

## Dichromacy





# Trichromacy



**Original Color**  
EB527F

**Protanomaly**  
AB7593

**Deuteranomaly**  
BA727B

**Tritanomaly**  
EA566A

# Monochromacy



**Original Color**  
EB527F

**Achromatopsia**  
858585

**Achromatomaly**  
AA7283

# CSS Examples

## Text

The CSS property to change the color of the text to Hex EB527F is called "color". The color property can be set on classes, ids or directly on the HTML element.

This example shows how text in the color #EB527F looks like.

```
.text, #text, p{  
    color:#EB527F  
}
```

If you want to add a text shadow in that color use the text-shadow property, you can generate a text shadow directly with our [CSS Text Shadow Generator](#).

Here you see how black text with a 4 pixel #EB527F colored shadow looks like.

```
.shadow{ text-shadow: 4px 4px 2px #EB527F
}
```

## Border

The CSS property to change the border of an element to Hex EB527F is called "border". The border property can be set on classes, ids or directly on the HTML element.

This example shows the color as border, it can be applied via the CSS property "border" or "border-color".

```
.border, #border, table{ border:4px solid
#EB527F }
```

If only the border color should be changed use the property `border-color`.

```
.border{ border-color:#EB527F }
```

If you want to add a box shadow in that color use:

Here you see how a box with a 4 pixel #EB527F colored shadow looks like.

```
.boxshadow{ -moz-box-shadow:4px 4px 4px  
4px #EB527F; -webkit-box-shadow:4px 4px  
4px 4px #EB527F; box-shadow:4px 4px 4px  
4px #EB527F }
```

# Background

The CSS property to change the background color of an element to Hex EB527F is called "background". The background property can be set on classes, ids or directly on the HTML element.

```
.background, #background, body{  
background:#EB527F }
```

If only the background color should be changed can be used:

```
.background{ background-color:#EB527F }
```

This example shows the color as background, it is applied via the CSS property "background".

To optimize and compress your CSS code, you can use our [online CSS compressor and optimizer](#) based on csstidy. If you want to create a linear or radial gradient as background or border, check our [CSS Gradient Generator](#).



Hey! You found this booklet interesting? Support Converting Colors with the new Membership Option!

The pro membership hides all ads, plus gives you double the colors in the color bucket, and more awesome pro features!

**[Learn more, Memberships starting at \\$2.50/m!](#)**

**Follow me  
on Twitter!**

@ConvertingColor