

Converting Colors

Hex(EB5676)

Have a look what the booklet for
Hex(EB5676) contains.

Hex(EB5676)	3
<i>Conversions</i>	4
<i>Details</i>	6
<i>Harmonies</i>	11
<i>Previews</i>	23
<i>Color Blindness Simulation</i>	26
<i>CSS Examples</i>	29

Color

Hex(EB5676)

Conversions

Conversions Part 1

Format	Color
Hex	EB5676
RGB	235, 86, 118
RGB Percent	92%, 34%, 46%
CMY	0.0784, 0.6627, 0.5373
CMYK	0.00, 0.63, 0.50, 0.08
HSL	347°, 79%, 63%
HSV	347°, 63%, 92%
XYZ	40.8588, 25.6258, 19.9323
YIQ	134.1990, 78.5320, 41.5400

Conversions

Conversions Part 2

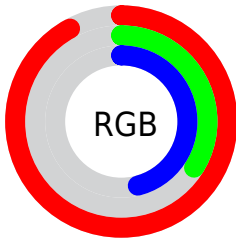
Format	Color
R_{YB}	235, 86, 118
Decimal	15423094
CIE _{Lab}	57.68, 59.77, 13.47
CIE _{LCh}	58, 61.270, 12.704
Yxy	25.6258, 0.4728, 0.2965
Android (android.graphics.Color)	4293613174 (0xFFEB5676)
YUV	134.1990, -7.9861, 88.4025
Hunter-Lab	50.6219, 55.4855, 12.0899

Details

The Hex color **EB5676** is a dark color, and the websafe version is hex **CC3366**. The color can be described as middle muted rose. A complement of this color would be **56EBCB**, and the grayscale version is **868686**.

A 20% lighter version of the original color is **FF8EAA**, and **AE1446** is the 20% darker color. If you saturate the color by 10%, you get **EB3F64**, and if you desaturate by 10%, it is **EB6E88**.

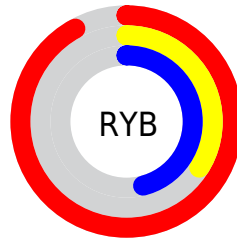
Distribution



Red (92%)

Green (34%)

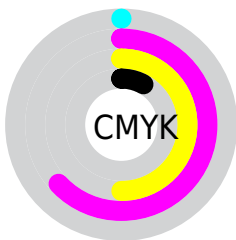
Blue (46%)



Red (92%)

Yellow (34%)

Blue (46%)

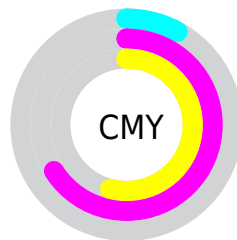


Cyan (0%)

Magenta (63%)

Yellow (50%)

Black (8%)



Cyan (8%)

Magenta (66%)

Yellow (54%)

Brightness & Saturation Gradients

These gradients show how the Hex color EB5676 changes by changing the brightness by 10 percent. The first figure shows a shift by +10% for each color and the second figure -10%.

Similar to the brightness gradients but the following saturation gradients show a change of the Hex color EB5676 by changing the saturation by 10% instead.

 EB5676

 EB5676

FFFFFF

 CC395D

 FF8EAA

 AE1446

 FFABC5

 900030

 FFC8E1

 72001C

 FFE5FE

 550000

 390002

 100000

 000000

 EB5676

 EB5676

 EB3F64

 EB6E88

 EB2751

 EB859B

 EB103F

 EB9DAD

 EB0032

 EBB4C0

 EBCCD2

 EBE3E5

 EBFBF7

 EBFFFF

Harmonies

Analogous

The Analogous color harmony consists of three colors that are next to each other on the color wheel.



DB5CAC



EB5676



DF6644

Triad

The Triadic color harmony groups three colors that are evenly spaced from another and form a triangle on the color wheel.



EB5676



539B35



0099F1

Complementary

The Complementary color scheme is a pair of colors which are on the opposite of each other on the color wheel.



EB5676



56EBCB

Split Complementary

Split-complementary colors differ from the complementary color scheme. The scheme consists of three colors, the original color and two neighbors of the complement color.



00A1D2



EB5676



00A269

Square

The Square scheme is like the rectangle color scheme, but the four colors are evenly spaced on the color wheel.



EB5676



908F0B



00A4A1



4489F4

Rectangle

The Rectangle color scheme consists of four colors that form a rectangle on the color wheel.



EB5676



CB7527



00A4A1



009DE9

Sweetspot

The Sweet Spot groups the original color and five complimentary colors.



EB5676



FFCFD9



CB56EB



806268



000000



808080

Same Dimension

The Same Dimension uses a secret algorithm to generate beautiful new colors.



EB5676



FF3D67



EB8056



756A6C



B50027



36000C

Inverse Universe

The Inverse Universe completely reimagines the original color for something new.



EB5676



FF3D67



56C1EB



756A6C



B50027



36000C

Previews

White Background



This preview shows how the Hex color EB5676 looks on a white background.

Color Contrast Check

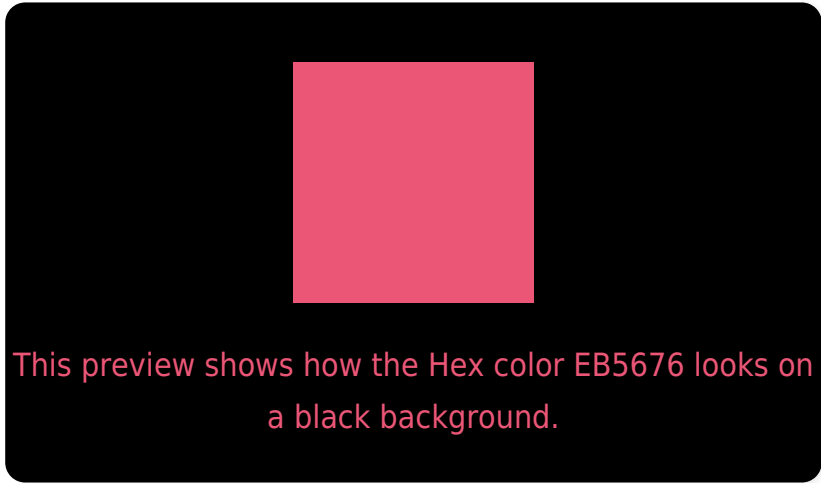
Large Text (above 18pt) WCAG AA ✓ Pass

Any Text WCAG AA ✗ Fail

Large Text (above 18pt) WCAG AAA ✗ Fail

Any Text WCAG AAA ✗ Fail

Black Background



Color Contrast Check

Large Text (above 18pt) WCAG AA ✓ Pass

Any Text WCAG AA ✓ Pass

Large Text (above 18pt) WCAG AAA ✓ Pass

Any Text WCAG AAA × Fail

If you want to check with other color combinations, try the [Color Contrast Checker](#).

Hex EB5676 Background



This preview shows how black text looks on a background with the Hex color EB5676.

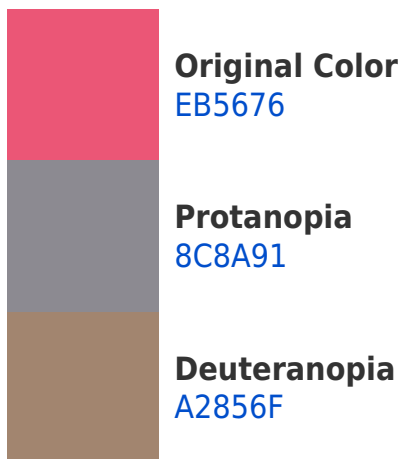


This preview shows how white text looks on a background with the Hex color EB5676.

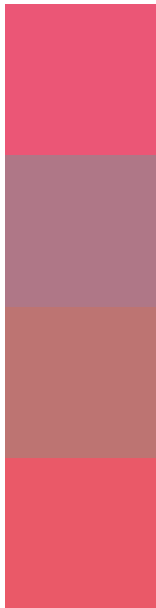
Color Blindness Simulation

Color vision deficiency is a very complex topic, and I could not describe the different causes any better than Wikipedia does, so if you want to learn more, you should check out their [article about color blindness](#).

Dichromacy



Trichromacy



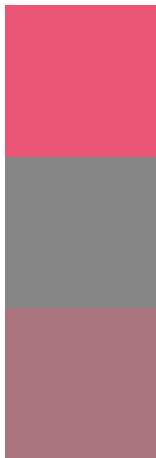
Original Color
EB5676

Protanomaly
AF7787

Deuteranomaly
BD7472

Tritanomaly
EA5968

Monochromacy



Original Color
EB5676

Achromatopsia
868686

Achromatomaly
AB7580

CSS Examples

Text

The CSS property to change the color of the text to Hex EB5676 is called "color". The color property can be set on classes, ids or directly on the HTML element.

This example shows how text in the color #EB5676 looks like.

```
.text, #text, p{  
    color:#EB5676  
}
```

If you want to add a text shadow in that color use the text-shadow property, you can generate a text shadow directly with our [CSS Text Shadow Generator](#).

Here you see how black text with a 4 pixel #EB5676 colored shadow looks like.

```
.shadow{ text-shadow: 4px 4px 2px #EB5676
}
```

Border

The CSS property to change the border of an element to Hex EB5676 is called "border". The border property can be set on classes, ids or directly on the HTML element.

This example shows the color as border, it can be applied via the CSS property "border" or "border-color".

```
.border, #border, table{ border:4px solid
#EB5676 }
```

If only the border color should be changed use the property `border-color`.

```
.border{ border-color:#EB5676 }
```

If you want to add a box shadow in that color use:

Here you see how a box with a 4 pixel #EB5676 colored shadow looks like.

```
.boxshadow{ -moz-box-shadow:4px 4px 4px  
4px #EB5676; -webkit-box-shadow:4px 4px  
4px 4px #EB5676; box-shadow:4px 4px 4px  
4px #EB5676 }
```

Background

The CSS property to change the background color of an element to Hex EB5676 is called "background". The background property can be set on classes, ids or directly on the HTML element.

```
.background, #background, body{  
background:#EB5676 }
```

If only the background color should be changed can be used:

```
.background{ background-color:#EB5676 }
```

This example shows the color as background, it is applied via the CSS property "background".

To optimize and compress your CSS code, you can use our [online CSS compressor and optimizer](#) based on csstidy. If you want to create a linear or radial gradient as background or border, check our [CSS Gradient Generator](#).

Hey! You found this booklet interesting? Support Converting Colors with the new Membership Option!

The pro membership hides all ads, plus gives you double the colors in the color bucket, and more awesome pro features!

[Learn more, Memberships starting at \\$2.50/m!](#)

**Follow me
on Twitter!**

@ConvertingColor