

Converting Colors

Hex(EB5A7E)

Have a look what the booklet for
Hex(EB5A7E) contains.

Hex(EB5A7E)	3
<i>Conversions</i>	4
<i>Details</i>	6
<i>Harmonies</i>	11
<i>Previews</i>	23
<i>Color Blindness Simulation</i>	26
<i>CSS Examples</i>	29

Color

Hex(EB5A7E)

Conversions

Conversions Part 1

Format	Color
Hex	EB5A7E
RGB	235, 90, 126
RGB Percent	92%, 35%, 49%
CMY	0.0784, 0.6471, 0.5059
CMYK	0.00, 0.62, 0.46, 0.08
HSL	345°, 78%, 64%
HSV	345°, 62%, 92%
XYZ	41.6830, 26.4809, 22.6530
YIQ	137.4590, 74.8640, 41.9360

Conversions

Conversions Part 2

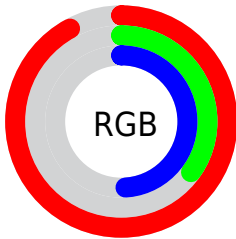
Format	Color
R _Y B	235, 90, 126
Decimal	15424126
CIE Lab	58.49, 58.80, 9.92
CIE LCh	58, 59.628, 9.579
Yxy	26.4809, 0.4590, 0.2916
Android (android.graphics.Color)	4293614206 (0xFFEB5A7E)
YUV	137.4590, -5.6493, 85.5435
Hunter-Lab	51.4596, 54.5335, 9.9216

Details

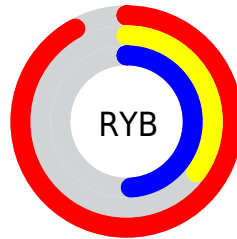
The Hex color **EB5A7E** is a dark color, and the websafe version is hex **FF6699**. The color can be described as middle muted rose. A complement of this color would be **5AEBC7**, and the grayscale version is **898989**.

A 20% lighter version of the original color is **FF92B2**, and **AE1B4D** is the 20% darker color. If you saturate the color by 10%, you get **EB426C**, and if you desaturate by 10%, it is **EB7290**.

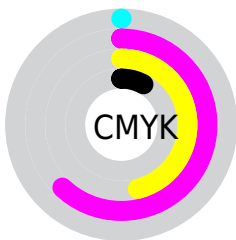
Distribution



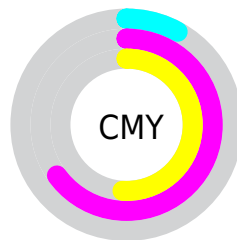
- Red (92%)
- Green (35%)
- Blue (49%)



- Red (92%)
- Yellow (35%)
- Blue (49%)



- Cyan (0%)
- Magenta (62%)
- Yellow (46%)
- Black (8%)



- Cyan (8%)
- Magenta (65%)
- Yellow (51%)

Brightness & Saturation Gradients

These gradients show how the Hex color EB5A7E changes by changing the brightness by 10 percent. The first figure shows a shift by +10% for each color and the second figure -10%.

Similar to the brightness gradients but the following saturation gradients show a change of the Hex color EB5A7E by changing the saturation by 10% instead.

 EB5A7E

 EB5A7E

FFFFFF

 CC3D65

 FF92B2

 AE1B4D

 FFAFCE

 900037

 FFCBEA

 730022

 FFE9FF

 56000B

 3B0002

 150000

 000000

 EB5A7E

 EB5A7E

 EB426C

 EB7290

 EB2B5B

 EB89A1

 EB1349

 EBA1B3

 EB003A

 EBB8C5

 EBD0D6

 EBE7E8

 EBFFFA

 EBFFFF

Harmonies

Analogous

The Analogous color harmony consists of three colors that are next to each other on the color wheel.



D862B2



EB5A7E



E2674D

Triad

The Triadic color harmony groups three colors that are evenly spaced from another and form a triangle on the color wheel.



EB5A7E



5F9C36



009CEE

Complementary

The Complementary color scheme is a pair of colors which are on the opposite of each other on the color wheel.



EB5A7E



5AEBC7

Split Complementary

Split-complementary colors differ from the complementary color scheme. The scheme consists of three colors, the original color and two neighbors of the complement color.



00A4CE



EB5A7E



00A366

Square

The Square scheme is like the rectangle color scheme, but the four colors are evenly spaced on the color wheel.



EB5A7E



988F15



00A59C



398DF4

Rectangle

The Rectangle color scheme consists of four colors that form a rectangle on the color wheel.



EB5A7E



D07630



00A59C



009FE6

Sweetspot

The Sweet Spot groups the original color and five complimentary colors.



EB5A7E



FFCFDB



C75AEB



806269



000000



808080

Same Dimension

The Same Dimension uses a secret algorithm to generate beautiful new colors.



EB5A7E



FF4271



EB7E5A



756A6C



B5002D



36000D

Inverse Universe

The Inverse Universe completely reimagines the original color for something new.



EB5A7E



FF4271



5AC7EB



756A6C



B5002D



36000D

Previews

White Background



This preview shows how the Hex color EB5A7E looks on a white background.

Color Contrast Check

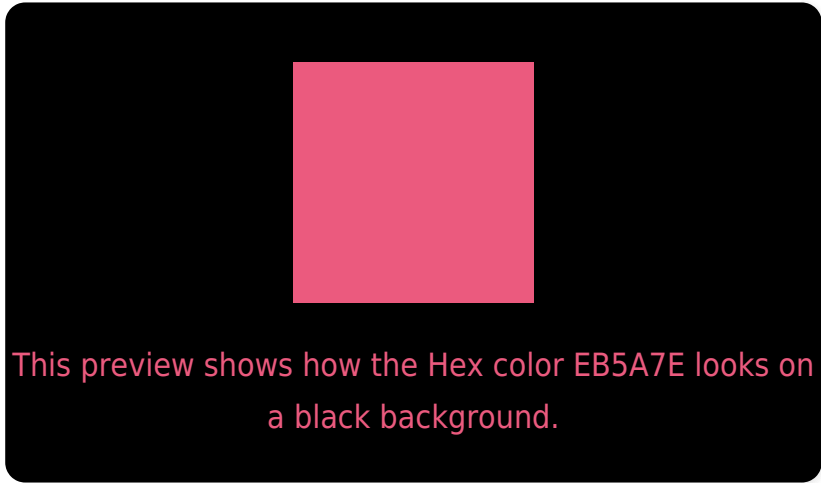
Large Text (above 18pt) WCAG AA ✓ Pass

Any Text WCAG AA ✗ Fail

Large Text (above 18pt) WCAG AAA ✗ Fail

Any Text WCAG AAA ✗ Fail

Black Background



Color Contrast Check

Large Text (above 18pt) WCAG AA ✓ Pass

Any Text WCAG AA ✓ Pass

Large Text (above 18pt) WCAG AAA ✓ Pass

Any Text WCAG AAA × Fail

If you want to check with other color combinations, try the [Color Contrast Checker](#).

Hex EB5A7E Background



This preview shows how black text looks on a background with the Hex color EB5A7E.



This preview shows how white text looks on a background with the Hex color EB5A7E.

Color Blindness Simulation

Color vision deficiency is a very complex topic, and I could not describe the different causes any better than Wikipedia does, so if you want to learn more, you should check out their [article about color blindness](#).

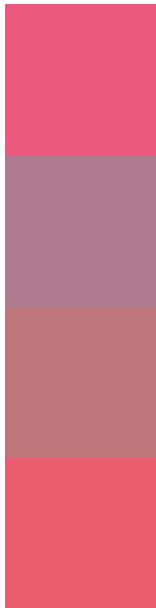
Dichromacy





Tritanopia
E95F65

Trichromacy



Original Color
EB5A7E

Protanomaly
AF7A90

Deuteranomaly
BD777A

Tritanomaly
EA5D6E

Monochromacy



Original Color
EB5A7E

Achromatopsia
898989

Achromatomaly
AD7885

CSS Examples

Text

The CSS property to change the color of the text to Hex EB5A7E is called "color". The color property can be set on classes, ids or directly on the HTML element.

This example shows how text in the color #EB5A7E looks like.

```
.text, #text, p{  
    color:#EB5A7E  
}
```

If you want to add a text shadow in that color use the text-shadow property, you can generate a text shadow directly with our [CSS Text Shadow Generator](#).

Here you see how black text with a 4 pixel #EB5A7E colored shadow looks like.

```
.shadow{ text-shadow: 4px 4px 2px #EB5A7E
}
```

Border

The CSS property to change the border of an element to Hex EB5A7E is called "border". The border property can be set on classes, ids or directly on the HTML element.

This example shows the color as border, it can be applied via the CSS property "border" or "border-color".

```
.border, #border, table{ border:4px solid
#EB5A7E }
```

If only the border color should be changed use the property `border-color`.

```
.border{ border-color:#EB5A7E }
```

If you want to add a box shadow in that color use:

Here you see how a box with a 4 pixel #EB5A7E colored shadow looks like.

```
.boxshadow{ -moz-box-shadow:4px 4px 4px  
4px #EB5A7E; -webkit-box-shadow:4px 4px  
4px 4px #EB5A7E; box-shadow:4px 4px 4px  
4px #EB5A7E }
```

Background

The CSS property to change the background color of an element to Hex EB5A7E is called "background". The background property can be set on classes, ids or directly on the HTML element.

```
.background, #background, body{  
background:#EB5A7E }
```

If only the background color should be changed can be used:

```
.background{ background-color:#EB5A7E }
```

This example shows the color as background, it is applied via the CSS property "background".

To optimize and compress your CSS code, you can use our [online CSS compressor and optimizer](#) based on csstidy. If you want to create a linear or radial gradient as background or border, check our [CSS Gradient Generator](#).

Hey! You found this booklet interesting? Support Converting Colors with the new Membership Option!

The pro membership hides all ads, plus gives you double the colors in the color bucket, and more awesome pro features!

[Learn more, Memberships starting at \\$2.50/m!](#)

**Follow me
on Twitter!**

@ConvertingColor