

Converting Colors

Hex(EB5B97)

Have a look what the booklet for
Hex(EB5B97) contains.

Hex(EB5B97)	3
<i>Conversions</i>	4
<i>Details</i>	6
<i>Harmonies</i>	11
<i>Previews</i>	23
<i>Color Blindness Simulation</i>	26
<i>CSS Examples</i>	29

Color

Hex(EB5B97)

Conversions

Conversions Part 1

Format	Color
Hex	EB5B97
RGB	235, 91, 151
RGB Percent	92%, 36%, 59%
CMY	0.0784, 0.6431, 0.4078
CMYK	0.00, 0.61, 0.36, 0.08
HSL	335°, 78%, 64%
HSV	335°, 61%, 92%
XYZ	43.5879, 27.3787, 32.2654
YIQ	140.8960, 66.5640, 49.1880

Conversions

Conversions Part 2

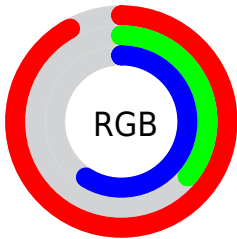
Format	Color
RYB	235, 91, 151
Decimal	15424407
CIELab	59.32, 60.91, -3.47
CIElCh	59, 61.008, 356.739
Yxy	27.3787, 0.4222, 0.2652
Android (android.graphics.Color)	4293614487 (0xFFEB5B97)
YUV	140.8960, 4.9813, 82.5292
Hunter-Lab	52.3247, 57.1275, 0.0667

Details

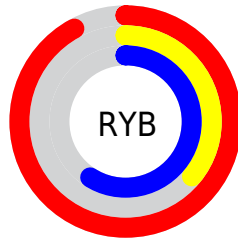
The Hex color **EB5B97** is a light color, and the websafe version is hex **FF6699**. The color can be described as light muted rose. A complement of this color would be **5BEBAF**, and the grayscale version is **8D8D8D**.

A 20% lighter version of the original color is **FF94CD**, and **AF1B64** is the 20% darker color. If you saturate the color by 10%, you get **EB4489**, and if you desaturate by 10%, it is **EB73A5**.

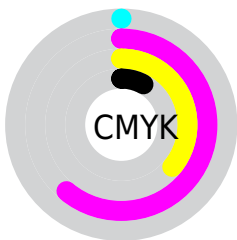
Distribution



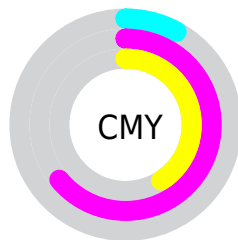
- Red (92%)
- Green (36%)
- Blue (59%)



- Red (92%)
- Yellow (36%)
- Blue (59%)



- Cyan (0%)
- Magenta (61%)
- Yellow (36%)
- Black (8%)



- Cyan (8%)
- Magenta (64%)
- Yellow (41%)

Brightness & Saturation Gradients

These gradients show how the Hex color EB5B97 changes by changing the brightness by 10 percent. The first figure shows a shift by +10% for each color and the second figure -10%.

Similar to the brightness gradients but the following saturation gradients show a change of the Hex color EB5B97 by changing the saturation by 10% instead.

 EB5B97

 EB5B97

FFFFFF

 CD3E7D

 FF94CD

 AF1B64

 FFB0E9

 92004C

 FFCDFD

 750036

 FFEAFF

 580021

 3F0008

 1C0001

 000000

 EB5B97

 EB5B97

 EB4489

 EB73A5

 EB2C7C

 EB8AB2

 EB156E

 EBA2C0

 EB0062

 EBB9CE

 EBD1DC

 EBE8E9

 EBFFF7

 EBFFFF

Harmonies

Analogous

The Analogous color harmony consists of three colors that are next to each other on the color wheel.



CA6BCA



EB5B97



ED6062

Triad

The Triadic color harmony groups three colors that are evenly spaced from another and form a triangle on the color wheel.



EB5B97



7B9A23



00A3E8

Complementary

The Complementary color scheme is a pair of colors which are on the opposite of each other on the color wheel.



EB5B97



5BEBAF

Split Complementary

Split-complementary colors differ from the complementary color scheme. The scheme consists of three colors, the original color and two neighbors of the complement color.



00A8BE



EB5B97



2AA351

Square

The Square scheme is like the rectangle color scheme, but the four colors are evenly spaced on the color wheel.



EB5B97



AF8A13



00A887



0097FA

Rectangle

The Rectangle color scheme consists of four colors that form a rectangle on the color wheel.



EB5B97



E16E42



00A887



00A5DC

Sweetspot

The Sweet Spot groups the original color and five complimentary colors.



EB5B97



FFD1E4



AF5BEB



80636F



000000



808080

Same Dimension

The Same Dimension uses a secret algorithm to generate beautiful new colors.



EB5B97



FF4291



EB675B



756A6E



B5004B



360016

Inverse Universe

The Inverse Universe completely reimagines the original color for something new.



EB5B97



FF4291



5BDFEB



756A6E



B5004B



360016

Previews

White Background



This preview shows how the Hex color EB5B97 looks on a white background.

Color Contrast Check

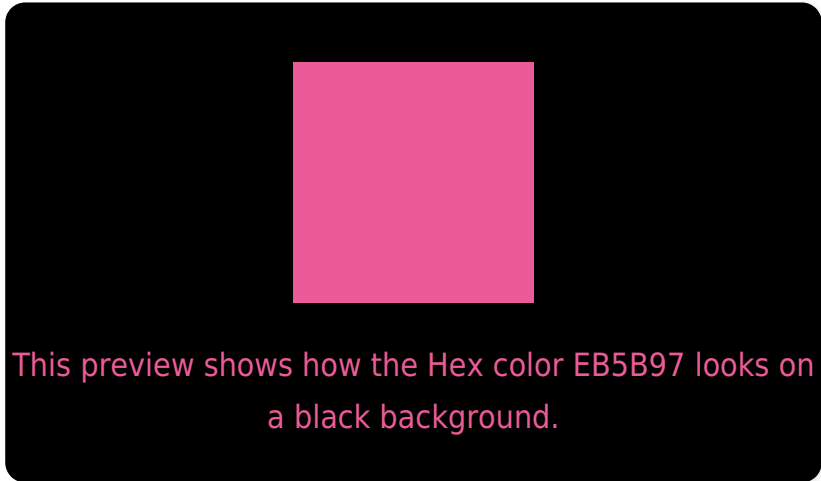
Large Text (above 18pt) WCAG AA ✓ Pass

Any Text WCAG AA × Fail

Large Text (above 18pt) WCAG AAA × Fail

Any Text WCAG AAA × Fail

Black Background



Color Contrast Check

Large Text (above 18pt) WCAG AA ✓ Pass

Any Text WCAG AA ✓ Pass

Large Text (above 18pt) WCAG AAA ✓ Pass

Any Text WCAG AAA × Fail

If you want to check with other color combinations, try the [Color Contrast Checker](#).

Hex EB5B97 Background



This preview shows how black text looks on a background with the Hex color EB5B97.



This preview shows how white text looks on a background with the Hex color EB5B97.

Color Blindness Simulation

Color vision deficiency is a very complex topic, and I could not describe the different causes any better than Wikipedia does, so if you want to learn more, you should check out their [article about color blindness](#).

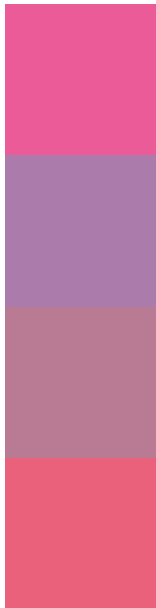
Dichromacy





Tritanopia
E8646B

Trichromacy



Original Color
EB5B97

Protanomaly
AA7BAB

Deuteranomaly
B97A93

Tritanomaly
E9617B

Monochromacy



Original Color
EB5B97

Achromatopsia
8D8D8D

Achromatomaly
AF7B91

CSS Examples

Text

The CSS property to change the color of the text to Hex EB5B97 is called "color". The color property can be set on classes, ids or directly on the HTML element.

This example shows how text in the color #EB5B97 looks like.

```
.text, #text, p{  
    color:#EB5B97  
}
```

If you want to add a text shadow in that color use the text-shadow property, you can generate a text shadow directly with our [CSS Text Shadow Generator](#).

Here you see how black text with a 4 pixel #EB5B97 colored shadow looks like.

```
.shadow{ text-shadow: 4px 4px 2px #EB5B97
}
```

Border

The CSS property to change the border of an element to Hex EB5B97 is called "border". The border property can be set on classes, ids or directly on the HTML element.

This example shows the color as border, it can be applied via the CSS property "border" or "border-color".

```
.border, #border, table{ border:4px solid
#EB5B97 }
```

If only the border color should be changed use the property `border-color`.

```
.border{ border-color:#EB5B97 }
```

If you want to add a box shadow in that color use:

Here you see how a box with a 4 pixel #EB5B97 colored shadow looks like.

```
.boxshadow{ -moz-box-shadow:4px 4px 4px  
4px #EB5B97; -webkit-box-shadow:4px 4px  
4px 4px #EB5B97; box-shadow:4px 4px 4px  
4px #EB5B97 }
```

Background

The CSS property to change the background color of an element to Hex EB5B97 is called "background". The background property can be set on classes, ids or directly on the HTML element.

```
.background, #background, body{  
background:#EB5B97 }
```

If only the background color should be changed can be used:

```
.background{ background-color:#EB5B97 }
```

This example shows the color as background, it is applied via the CSS property "background".

To optimize and compress your CSS code, you can use our [online CSS compressor and optimizer](#) based on csstidy. If you want to create a linear or radial gradient as background or border, check our [CSS Gradient Generator](#).

Hey! You found this booklet interesting? Support Converting Colors with the new Membership Option!

The pro membership hides all ads, plus gives you double the colors in the color bucket, and more awesome pro features!

[Learn more, Memberships starting at \\$2.50/m!](#)

**Follow me
on Twitter!**

@ConvertingColor