

# Converting Colors

Hex(EB6080)

Have a look what the booklet for  
Hex(EB6080) contains.

<b>Hex(EB6080)</b> .....	3
<i><b>Conversions</b></i> .....	4
<i><b>Details</b></i> .....	6
<i><b>Harmonies</b></i> .....	11
<i><b>Previews</b></i> .....	23
<i><b>Color Blindness Simulation</b></i> .....	26
<i><b>CSS Examples</b></i> .....	29

# **Color**

**Hex(EB6080)**

# Conversions

## Conversions Part 1

Format	Color
Hex	EB6080
RGB	235, 96, 128
RGB Percent	92%, 38%, 50%
CMY	0.0784, 0.6235, 0.4980
CMYK	0.00, 0.59, 0.46, 0.08
HSL	346°, 78%, 65%
HSV	346°, 59%, 92%
XYZ	42.3401, 27.5864, 23.5152
YIQ	141.2090, 72.5720, 39.4200

# Conversions

## Conversions Part 2

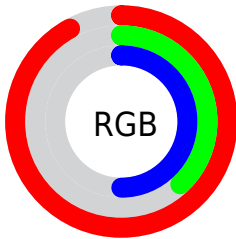
Format	Color
R <sub>Y</sub> B	235, 96, 128
Decimal	15425664
CIE Lab	59.51, 56.38, 10.20
CIE LCh	60, 57.291, 10.257
Yxy	27.5864, 0.4531, 0.2952
Android (android.graphics.Color)	4293615744 (0xFFEB6080)
YUV	141.2090, -6.5120, 82.2547
Hunter-Lab	52.5228, 51.9791, 10.2209

# Details

The Hex color **EB6080** is a light color, and the websafe version is hex **FF6699**. A complement of this color would be **60EBCB**, and the grayscale version is **8D8D8D**.

A 20% lighter version of the original color is **FF98B5**, and **AE254F** is the 20% darker color. If you saturate the color by 10%, you get **EB496E**, and if you desaturate by 10%, it is **EB7892**.

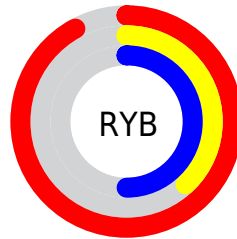
# Distribution



Red (92%)

Green (38%)

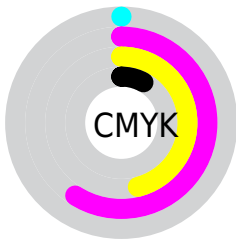
Blue (50%)



Red (92%)

Yellow (38%)

Blue (50%)

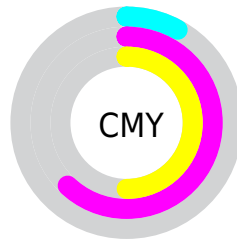


Cyan (0%)

Magenta (59%)

Yellow (46%)

Black (8%)



Cyan (8%)

Magenta (62%)

Yellow (50%)

# Brightness & Saturation Gradients

These gradients show how the Hex color EB6080 changes by changing the brightness by 10 percent. The first figure shows a shift by +10% for each color and the second figure -10%.

Similar to the brightness gradients but the following saturation gradients show a change of the Hex color EB6080 by changing the saturation by 10% instead.



 EB6080

 EB6080

FFFFFF

 CD4467

 FF98B5

 AE254F

 FFB4D0

 910039

 FFD1EC

 740023

 FFEEFF

 57000E

 3D0003

 170001

 000000

 EB6080

 EB6080

 EB496E

 EB7892

 EB315C

 EB8FA4

 EB194A

 EBA6B6

 EB0238

 EBBEC8

 EB0036

 EBD6DA

 EBEBED

 EBFFFF

# Harmonies

## Analogous

The Analogous color harmony consists of three colors that are next to each other on the color wheel.



D966B3



EB6080



E26C51

# Triad

The Triadic color harmony groups three colors that are evenly spaced from another and form a triangle on the color wheel.



EB6080



639E3D



009EEE

# Complementary

The Complementary color scheme is a pair of colors which are on the opposite of each other on the color wheel.



EB6080



60EBCB

# Split Complementary

Split-complementary colors differ from the complementary color scheme. The scheme consists of three colors, the original color and two neighbors of the complement color.



00A6CF



EB6080



00A56B

# Square

The Square scheme is like the rectangle color scheme, but the four colors are evenly spaced on the color wheel.



EB6080



9A9221



00A8A0



498FF3

# Rectangle

The Rectangle color scheme consists of four colors that form a rectangle on the color wheel.



EB6080



D07A36



00A8A0



00A1E6



# Sweetspot

The Sweet Spot groups the original color and five complimentary colors.



EB6080



FFD1DC



CB60EB



80636A



000000



808080



# Same Dimension

The Same Dimension uses a secret algorithm to generate beautiful new colors.



EB6080



FF4A74



EB8560



756A6C



B5002A



36000C



# Inverse Universe

The Inverse Universe completely reimagines the original color for something new.



EB6080



FF4A74



60C6EB



756A6C



B5002A



36000C



# Previews

## White Background



This preview shows how the Hex color EB6080 looks on a white background.

## Color Contrast Check

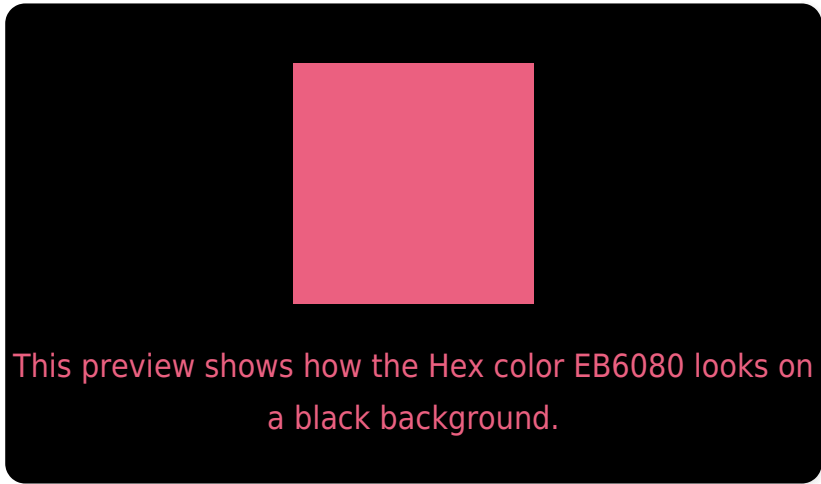
Large Text (above 18pt) WCAG AA ✓ Pass

Any Text WCAG AA × Fail

Large Text (above 18pt) WCAG AAA × Fail

Any Text WCAG AAA × Fail

# Black Background



## Color Contrast Check

Large Text (above 18pt) WCAG AA ✓ Pass

Any Text WCAG AA ✓ Pass

Large Text (above 18pt) WCAG AAA ✓ Pass

Any Text WCAG AAA × Fail

If you want to check with other color combinations, try the [Color Contrast Checker](#).



## Hex EB6080 Background



This preview shows how black text looks on a background with the Hex color EB6080.

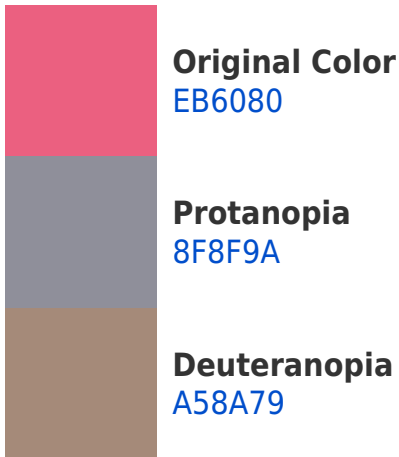


This preview shows how white text looks on a background with the Hex color EB6080.

# Color Blindness Simulation

Color vision deficiency is a very complex topic, and I could not describe the different causes any better than Wikipedia does, so if you want to learn more, you should check out their [article about color blindness](#).

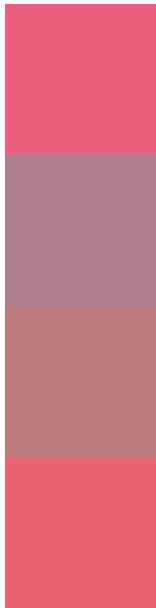
## Dichromacy





**Tritanopia**  
EA646B

# Trichromacy



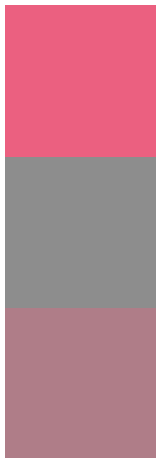
**Original Color**  
EB6080

**Protanomaly**  
B07E91

**Deuteranomaly**  
BE7B7C

**Tritanomaly**  
EA6373

# Monochromacy



**Original Color**  
EB6080

**Achromatopsia**  
8D8D8D

**Achromatomaly**  
AF7D88

# CSS Examples

## Text

The CSS property to change the color of the text to Hex EB6080 is called "color". The color property can be set on classes, ids or directly on the HTML element.

This example shows how text in the color #EB6080 looks like.

```
.text, #text, p{  
    color:#EB6080  
}
```

If you want to add a text shadow in that color use the text-shadow property, you can generate a text shadow directly with our [CSS Text Shadow Generator](#).

Here you see how black text with a 4 pixel #EB6080 colored shadow looks like.

```
.shadow{ text-shadow: 4px 4px 2px #EB6080
}
```

## Border

The CSS property to change the border of an element to Hex EB6080 is called "border". The border property can be set on classes, ids or directly on the HTML element.

This example shows the color as border, it can be applied via the CSS property "border" or "border-color".

```
.border, #border, table{ border:4px solid
#EB6080 }
```

If only the border color should be changed use the property `border-color`.

```
.border{ border-color:#EB6080 }
```

If you want to add a box shadow in that color use:

Here you see how a box with a 4 pixel #EB6080 colored shadow looks like.

```
.boxshadow{ -moz-box-shadow:4px 4px 4px  
4px #EB6080; -webkit-box-shadow:4px 4px  
4px 4px #EB6080; box-shadow:4px 4px 4px  
4px #EB6080 }
```

# Background

The CSS property to change the background color of an element to Hex EB6080 is called "background". The background property can be set on classes, ids or directly on the HTML element.

```
.background, #background, body{  
background:#EB6080 }
```

If only the background color should be changed can be used:

```
.background{ background-color:#EB6080 }
```

This example shows the color as background, it is applied via the CSS property "background".

To optimize and compress your CSS code, you can use our [online CSS compressor and optimizer](#) based on csstidy. If you want to create a linear or radial gradient as background or border, check our [CSS Gradient Generator](#).



Hey! You found this booklet interesting? Support Converting Colors with the new Membership Option!

The pro membership hides all ads, plus gives you double the colors in the color bucket, and more awesome pro features!

**[Learn more, Memberships starting at \\$2.50/m!](#)**

**Follow me  
on Twitter!**

@ConvertingColor