

Converting Colors

Hex(EB7599)

Have a look what the booklet for
Hex(EB7599) contains.

Hex(EB7599)	3
<i>Conversions</i>	4
<i>Details</i>	6
<i>Harmonies</i>	11
<i>Previews</i>	23
<i>Color Blindness Simulation</i>	26
<i>CSS Examples</i>	29

Color

Hex(EB7599)

Conversions

Conversions Part 1

Format	Color
Hex	EB7599
RGB	235, 117, 153
RGB Percent	92%, 46%, 60%
CMY	0.0784, 0.5412, 0.4000
CMYK	0.00, 0.50, 0.35, 0.08
HSL	342°, 75%, 69%
HSV	342°, 50%, 92%
XYZ	46.3720, 32.6847, 34.0017
YIQ	156.3860, 58.7720, 36.2120

Conversions

Conversions Part 2

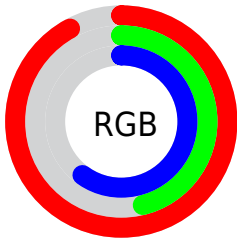
Format	Color
R_{YB}	235, 117, 153
Decimal	15431065
CIE _{Lab}	63.90, 49.20, 2.08
CIE _{LCh}	64, 49.246, 2.419
Yxy	32.6847, 0.4102, 0.2891
Android (android.graphics.Color)	4293621145 (0xFFEB7599)
YUV	156.3860, -1.6693, 68.9445
Hunter-Lab	57.1705, 44.7362, 4.7571

Details

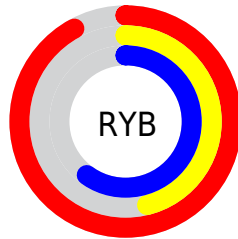
The Hex color **EB7599** is a light color, and the websafe version is hex **FF6699**. A complement of this color would be **75EBC7**, and the grayscale version is **9C9C9C**.

A 20% lighter version of the original color is **FFACCF**, and **B03F66** is the 20% darker color. If you saturate the color by 10%, you get **EB5E89**, and if you desaturate by 10%, it is **EB8DA9**.

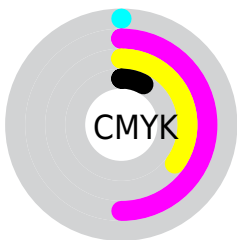
Distribution



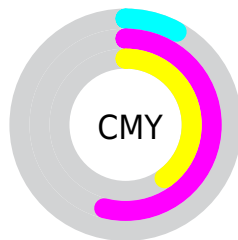
- Red (92%)
- Green (46%)
- Blue (60%)



- Red (92%)
- Yellow (46%)
- Blue (60%)



- Cyan (0%)
- Magenta (50%)
- Yellow (35%)
- Black (8%)



- Cyan (8%)
- Magenta (54%)
- Yellow (40%)

Brightness & Saturation Gradients

These gradients show how the Hex color EB7599 changes by changing the brightness by 10 percent. The first figure shows a shift by +10% for each color and the second figure -10%.

Similar to the brightness gradients but the following saturation gradients show a change of the Hex color EB7599 by changing the saturation by 10% instead.

 EB7599

 EB7599

FFFFFF

 CD5A7F

 FFACCF

 B03F66

 FFC8EB

 93234E

 FFE5FF

 770038

 5B0022

 41000C

 250001

 000000

 EB7599

 EB7599

 EB5E89

 EB8DA9

 EB4678

 EBA4BA

 EB2F68

 EBBBCA

 EB1758

 EBD3DA

 EB0048

 EBEBEB

 EBFFFB

 EBFFFF

Harmonies

Analogous

The Analogous color harmony consists of three colors that are next to each other on the color wheel.



D47DC4



EB7599



EA7B6E

Triad

The Triadic color harmony groups three colors that are evenly spaced from another and form a triangle on the color wheel.



EB7599



84A64D



00AAE8

Complementary

The Complementary color scheme is a pair of colors which are on the opposite of each other on the color wheel.



EB7599



75EBC7

Split Complementary

Split-complementary colors differ from the complementary color scheme. The scheme consists of three colors, the original color and two neighbors of the complement color.



00B0C9



EB7599



48AE70

Square

The Square scheme is like the rectangle color scheme, but the four colors are evenly spaced on the color wheel.



EB7599



B19A3F



00B19D



4F9EF2

Rectangle

The Rectangle color scheme consists of four colors that form a rectangle on the color wheel.



EB7599



DD8456



00B19D



00ADDF

Sweetspot

The Sweet Spot groups the original color and five complimentary colors.



EB7599



FFD9E4



C675EB



806970



000000



808080

Same Dimension

The Same Dimension uses a secret algorithm to generate beautiful new colors.



EB7599



FF6695



EB8B75



756A6D



B50037



360010

Inverse Universe

The Inverse Universe completely reimagines the original color for something new.



EB7599



FF6695



75D5EB



756A6D



B50037



360010

Previews

White Background



This preview shows how the Hex color EB7599 looks on a white background.

Color Contrast Check

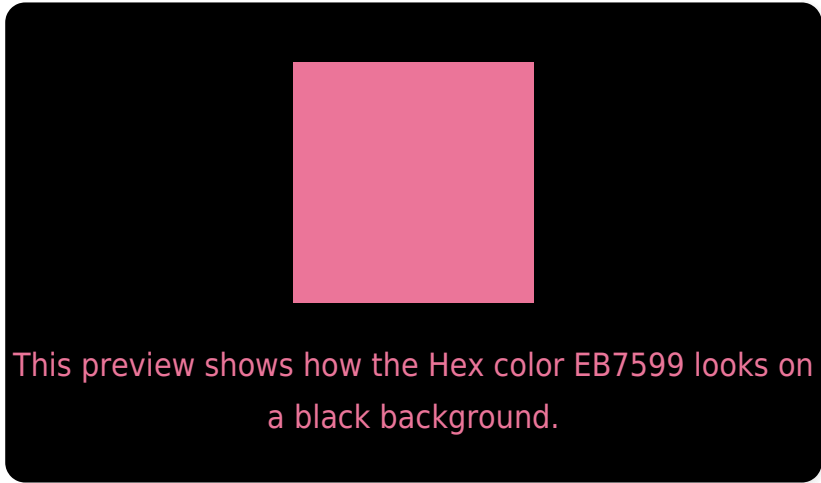
Large Text (above 18pt) WCAG AA × Fail

Any Text WCAG AA × Fail

Large Text (above 18pt) WCAG AAA × Fail

Any Text WCAG AAA × Fail

Black Background



Color Contrast Check

Large Text (above 18pt) WCAG AA ✓ Pass

Any Text WCAG AA ✓ Pass

Large Text (above 18pt) WCAG AAA ✓ Pass

Any Text WCAG AAA ✓ Pass

If you want to check with other color combinations, try the [Color Contrast Checker](#).

Hex EB7599 Background



This preview shows how black text looks on a background with the Hex color EB7599.

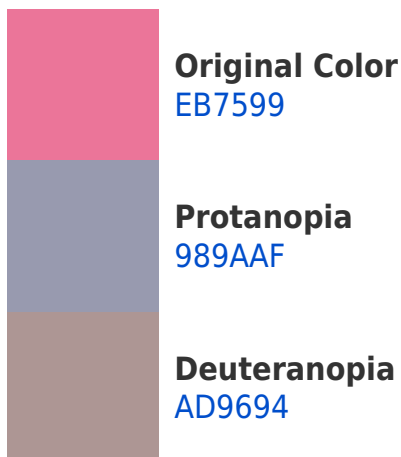


This preview shows how white text looks on a background with the Hex color EB7599.

Color Blindness Simulation

Color vision deficiency is a very complex topic, and I could not describe the different causes any better than Wikipedia does, so if you want to learn more, you should check out their [article about color blindness](#).

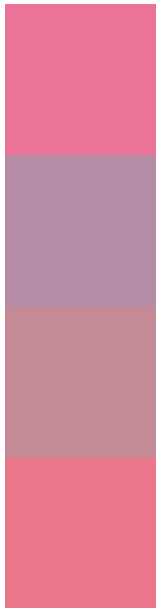
Dichromacy





Tritanopia
E97982

Trichromacy



Original Color
EB7599

Protanomaly
B68DA7

Deuteranomaly
C48A96

Tritanomaly
EA788A

Monochromacy



Original Color
EB7599

Achromatopsia
9C9C9C

Achromatomaly
B98E9B

CSS Examples

Text

The CSS property to change the color of the text to Hex EB7599 is called "color". The color property can be set on classes, ids or directly on the HTML element.

This example shows how text in the color #EB7599 looks like.

```
.text, #text, p{  
    color:#EB7599  
}
```

If you want to add a text shadow in that color use the text-shadow property, you can generate a text shadow directly with our [CSS Text Shadow Generator](#).

Here you see how black text with a 4 pixel #EB7599 colored shadow looks like.

```
.shadow{ text-shadow: 4px 4px 2px #EB7599
}
```

Border

The CSS property to change the border of an element to Hex EB7599 is called "border". The border property can be set on classes, ids or directly on the HTML element.

This example shows the color as border, it can be applied via the CSS property "border" or "border-color".

```
.border, #border, table{ border:4px solid
#EB7599 }
```

If only the border color should be changed use the property `border-color`.

```
.border{ border-color:#EB7599 }
```

If you want to add a box shadow in that color use:

Here you see how a box with a 4 pixel #EB7599 colored shadow looks like.

```
.boxshadow{ -moz-box-shadow:4px 4px 4px  
4px #EB7599; -webkit-box-shadow:4px 4px  
4px 4px #EB7599; box-shadow:4px 4px 4px  
4px #EB7599 }
```

Background

The CSS property to change the background color of an element to Hex EB7599 is called "background". The background property can be set on classes, ids or directly on the HTML element.

```
.background, #background, body{  
background:#EB7599 }
```

If only the background color should be changed can be used:

```
.background{ background-color:#EB7599 }
```

This example shows the color as background, it is applied via the CSS property "background".

To optimize and compress your CSS code, you can use our [online CSS compressor and optimizer](#) based on csstidy. If you want to create a linear or radial gradient as background or border, check our [CSS Gradient Generator](#).

Hey! You found this booklet interesting? Support Converting Colors with the new Membership Option!

The pro membership hides all ads, plus gives you double the colors in the color bucket, and more awesome pro features!

[Learn more, Memberships starting at \\$2.50/m!](#)

**Follow me
on Twitter!**

@ConvertingColor