

Converting Colors

Hex(EB7871)

Have a look what the booklet for
Hex(EB7871) contains.

Hex(EB7871)	3
<i>Conversions</i>	4
<i>Details</i>	6
<i>Harmonies</i>	11
<i>Previews</i>	23
<i>Color Blindness Simulation</i>	26
<i>CSS Examples</i>	29

Color

Hex(EB7871)

Conversions

Conversions Part 1

Format	Color
Hex	EB7871
RGB	235, 120, 113
RGB Percent	92%, 47%, 44%
CMY	0.0784, 0.5294, 0.5569
CMYK	0.00, 0.49, 0.52, 0.08
HSL	3°, 75%, 68%
HSV	3°, 52%, 92%
XYZ	43.9581, 32.2874, 19.5380
YIQ	153.5870, 70.7870, 22.2030

Conversions

Conversions Part 2

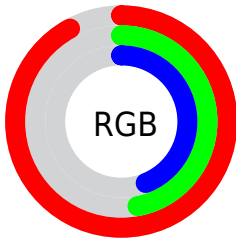
Format	Color
R _Y B	235, 120, 113
Decimal	15431793
CIE Lab	63.58, 43.65, 24.40
CIE LCh	64, 50.007, 29.204
Yxy	32.2874, 0.4589, 0.3371
Android (android.graphics.Color)	4293621873 (0xFFEB7871)
YUV	153.5870, -20.0094, 71.3992
Hunter-Lab	56.8220, 38.6510, 19.3887

Details

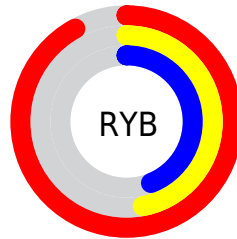
The Hex color **EB7871** is a light color, and the websafe version is hex **CC6666**. A complement of this color would be **71E4EB**, and the grayscale version is **9A9A9A**.

A 20% lighter version of the original color is **FFAEA5**, and **AF4441** is the 20% darker color. If you saturate the color by 10%, you get **EB625A**, and if you desaturate by 10%, it is **EB8E89**.

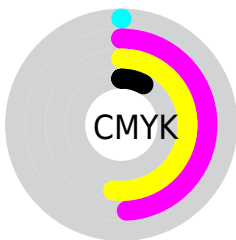
Distribution



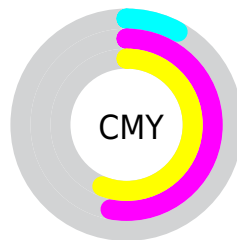
- Red (92%)
- Green (47%)
- Blue (44%)



- Red (92%)
- Yellow (47%)
- Blue (44%)



- Cyan (0%)
- Magenta (49%)
- Yellow (52%)
- Black (8%)



- Cyan (8%)
- Magenta (53%)
- Yellow (56%)

Brightness & Saturation Gradients

These gradients show how the Hex color EB7871 changes by changing the brightness by 10 percent. The first figure shows a shift by +10% for each color and the second figure -10%.

Similar to the brightness gradients but the following saturation gradients show a change of the Hex color EB7871 by changing the saturation by 10% instead.

 EB7871

 EB7871

FFFFFF

 CD5E58

 FFAEA5

 AF4441

 FFCBC0

 91292B

 FFE7DC

 740816

 FFFFF8

 580000

 3C0000

 1E0001

 000000

 EB7871

 EB7871

 EB625A

 EB8E89

 EB4C42

 EBA4A0

 EB362A

 EBBAB8

 EB1F13

 EBD1CF

 EB0D00

 EBE7E7

 EBFDFE

 EBFFFF

Harmonies

Analogous

The Analogous color harmony consists of three colors that are next to each other on the color wheel.



EA749D



EB7871



D7874E

Triad

The Triadic color harmony groups three colors that are evenly spaced from another and form a triangle on the color wheel.



EB7871



4DAC6A



3D9FF3

Complementary

The Complementary color scheme is a pair of colors which are on the opposite of each other on the color wheel.



EB7871



71E4EB

Split Complementary

Split-complementary colors differ from the complementary color scheme. The scheme consists of three colors, the original color and two neighbors of the complement color.



00AAE6



EB7871



00B097

Square

The Square scheme is like the rectangle color scheme, but the four colors are evenly spaced on the color wheel.



EB7871



88A448



00B0C4



9A8FE8

Rectangle

The Rectangle color scheme consists of four colors that form a rectangle on the color wheel.



EB7871



C19240



00B0C4



00A3F1

Sweetspot

The Sweet Spot groups the original color and five complimentary colors.



EB7871



FFD9D6



EB71E5



806967



000000



808080

Same Dimension

The Same Dimension uses a secret algorithm to generate beautiful new colors.



EB7871



FF6A61



EBB471



756A6A



B50A00



360300

Inverse Universe

The Inverse Universe completely reimagines the original color for something new.



71E4EB



61F6FF



71A8EB



6A7575



00ABB5



003236

Previews

White Background



This preview shows how the Hex color EB7871 looks on a white background.

Color Contrast Check

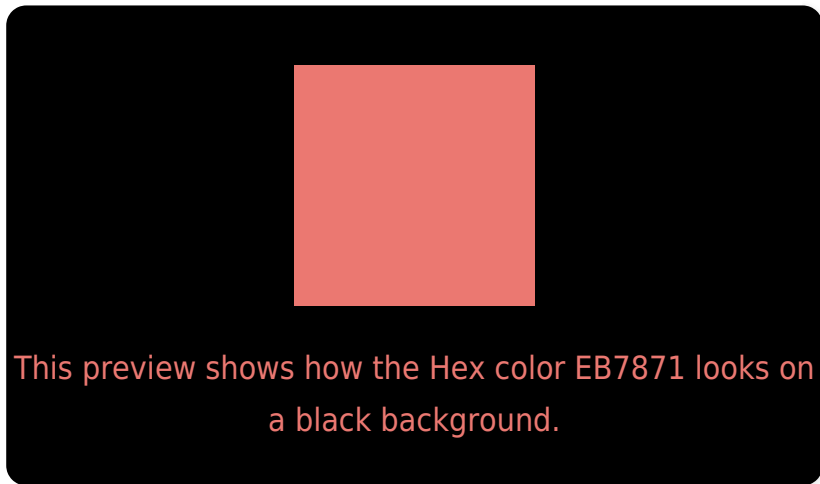
Large Text (above 18pt) WCAG AA × Fail

Any Text WCAG AA × Fail

Large Text (above 18pt) WCAG AAA × Fail

Any Text WCAG AAA × Fail

Black Background



Color Contrast Check

Large Text (above 18pt) WCAG AA ✓ Pass

Any Text WCAG AA ✓ Pass

Large Text (above 18pt) WCAG AAA ✓ Pass

Any Text WCAG AAA ✓ Pass

If you want to check with other color combinations, try the [Color Contrast Checker](#).

Hex EB7871 Background



This preview shows how black text looks on a background with the Hex color EB7871.

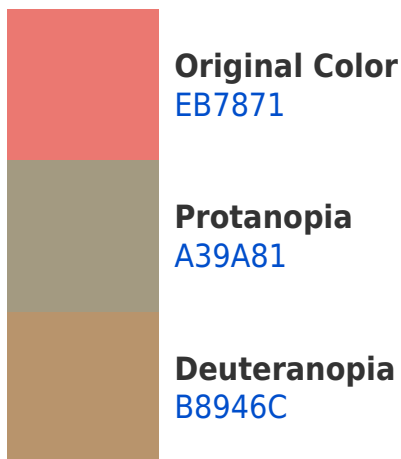


This preview shows how white text looks on a background with the Hex color EB7871.

Color Blindness Simulation

Color vision deficiency is a very complex topic, and I could not describe the different causes any better than Wikipedia does, so if you want to learn more, you should check out their [article about color blindness](#).

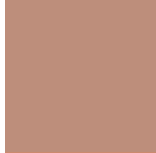
Dichromacy



Trichromacy



Original Color
EB7871



Protanomaly
BD8E7B



Deuteranomaly
CB8A6E

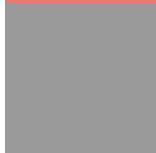


Tritanomaly
EC7779

Monochromacy



Original Color
EB7871



Achromatopsia
9A9A9A



Achromatomaly
B78E8B

CSS Examples

Text

The CSS property to change the color of the text to Hex EB7871 is called "color". The color property can be set on classes, ids or directly on the HTML element.

This example shows how text in the color #EB7871 looks like.

```
.text, #text, p{  
    color:#EB7871  
}
```

If you want to add a text shadow in that color use the text-shadow property, you can generate a text shadow directly with our [CSS Text Shadow Generator](#).

Here you see how black text with a 4 pixel #EB7871 colored shadow looks like.

```
.shadow{ text-shadow: 4px 4px 2px #EB7871
}
```

Border

The CSS property to change the border of an element to Hex EB7871 is called "border". The border property can be set on classes, ids or directly on the HTML element.

This example shows the color as border, it can be applied via the CSS property "border" or "border-color".

```
.border, #border, table{ border:4px solid
#EB7871 }
```

If only the border color should be changed use the property border-color.

```
.border{ border-color:#EB7871 }
```

If you want to add a box shadow in that color use:

Here you see how a box with a 4 pixel #EB7871 colored shadow looks like.

```
.boxshadow{ -moz-box-shadow:4px 4px 4px  
4px #EB7871; -webkit-box-shadow:4px 4px  
4px 4px #EB7871; box-shadow:4px 4px 4px  
4px #EB7871 }
```

Background

The CSS property to change the background color of an element to Hex EB7871 is called "background". The background property can be set on classes, ids or directly on the HTML element.

```
.background, #background, body{  
background:#EB7871 }
```

If only the background color should be changed can be used:

```
.background{ background-color:#EB7871 }
```

This example shows the color as background, it is applied via the CSS property "background".

To optimize and compress your CSS code, you can use our [online CSS compressor and optimizer](#) based on csstidy. If you want to create a linear or radial gradient as background or border, check our [CSS Gradient Generator](#).

Hey! You found this booklet interesting? Support Converting Colors with the new Membership Option!

The pro membership hides all ads, plus gives you double the colors in the color bucket, and more awesome pro features!

[Learn more, Memberships starting at \\$2.50/m!](#)

**Follow me
on Twitter!**

@ConvertingColor