

Converting Colors

Hex(EB8499)

Have a look what the booklet for
Hex(EB8499) contains.

Hex(EB8499)	3
<i>Conversions</i>	4
<i>Details</i>	6
<i>Harmonies</i>	11
<i>Previews</i>	23
<i>Color Blindness Simulation</i>	26
<i>CSS Examples</i>	29

Color

Hex(EB8499)

Conversions

Conversions Part 1

Format	Color
Hex	EB8499
RGB	235, 132, 153
RGB Percent	92%, 52%, 60%
CMY	0.0784, 0.4824, 0.4000
CMYK	0.00, 0.44, 0.35, 0.08
HSL	348°, 72%, 72%
HSV	348°, 44%, 92%
XYZ	48.2620, 36.4646, 34.6317
YIQ	165.1910, 54.6470, 28.3670

Conversions

Conversions Part 2

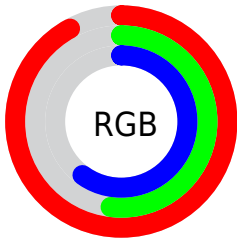
Format	Color
R_{YB}	235, 132, 153
Decimal	15434905
CIE _{Lab}	66.87, 41.68, 6.36
CIE _{LCh}	67, 42.165, 8.680
Yxy	36.4646, 0.4043, 0.3055
Android (android.graphics.Color)	4293624985 (0xFFEB8499)
YUV	165.1910, -6.0102, 61.2225
Hunter-Lab	60.3859, 36.9864, 8.2670

Details

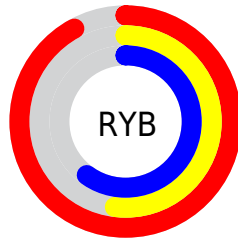
The Hex color **EB8499** is a light color, and the websafe version is hex **FF9999**. A complement of this color would be **84EBD6**, and the grayscale version is **A5A5A5**.

A 20% lighter version of the original color is **FFBBCF**, and **B05066** is the 20% darker color. If you saturate the color by 10%, you get **EB6D86**, and if you desaturate by 10%, it is **EB9CAC**.

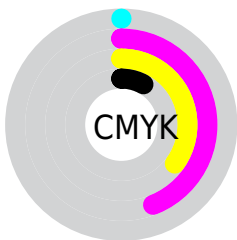
Distribution



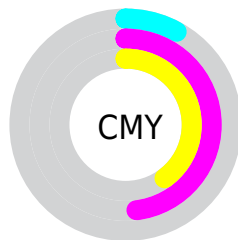
- Red (92%)
- Green (52%)
- Blue (60%)



- Red (92%)
- Yellow (52%)
- Blue (60%)



- Cyan (0%)
- Magenta (44%)
- Yellow (35%)
- Black (8%)



- Cyan (8%)
- Magenta (48%)
- Yellow (40%)

Brightness & Saturation Gradients

These gradients show how the Hex color EB8499 changes by changing the brightness by 10 percent. The first figure shows a shift by +10% for each color and the second figure -10%.

Similar to the brightness gradients but the following saturation gradients show a change of the Hex color EB8499 by changing the saturation by 10% instead.

 EB8499

 EB8499

FFFFFF

 CD6A7F

 FFBBCF

 B05066

 FFD7EB

 94364E

 FFF4FF

 781B38

 5D0022

 42000C

 290001

 000000

 EB8499

 EB8499

 EB6D86

 EB9CAC

 EB5574

 EBB3BE

 EB3E61

 EBCBD1

 EB264E

 EBE2E4

 EB0F3B

 EBFAF7

 EB0030

 EBFFFF

Harmonies

Analogous

The Analogous color harmony consists of three colors that are next to each other on the color wheel.



DB88BF



EB8499



E68A75

Triad

The Triadic color harmony groups three colors that are evenly spaced from another and form a triangle on the color wheel.



EB8499



87AE66



1FAEE9

Complementary

The Complementary color scheme is a pair of colors which are on the opposite of each other on the color wheel.



EB8499



84EBD6

Split Complementary

Split-complementary colors differ from the complementary color scheme. The scheme consists of three colors, the original color and two neighbors of the complement color.



00B5D1



EB8499



55B486

Square

The Square scheme is like the rectangle color scheme, but the four colors are evenly spaced on the color wheel.



EB8499



B0A456



00B7AD



7BA3ED

Rectangle

The Rectangle color scheme consists of four colors that form a rectangle on the color wheel.



EB8499



DA9263



00B7AD



00B1E3

Sweetspot

The Sweet Spot groups the original color and five complimentary colors.



EB8499



FFDEE5



D584EB



806B6F



000000



808080

Same Dimension

The Same Dimension uses a secret algorithm to generate beautiful new colors.



EB8499



FF7893



EBA184



756A6C



B50025



36000B

Inverse Universe

The Inverse Universe completely reimagines the original color for something new.



EB8499



FF7893



84CEEB



756A6C



B50025



36000B

Previews

White Background



This preview shows how the Hex color EB8499 looks on a white background.

Color Contrast Check

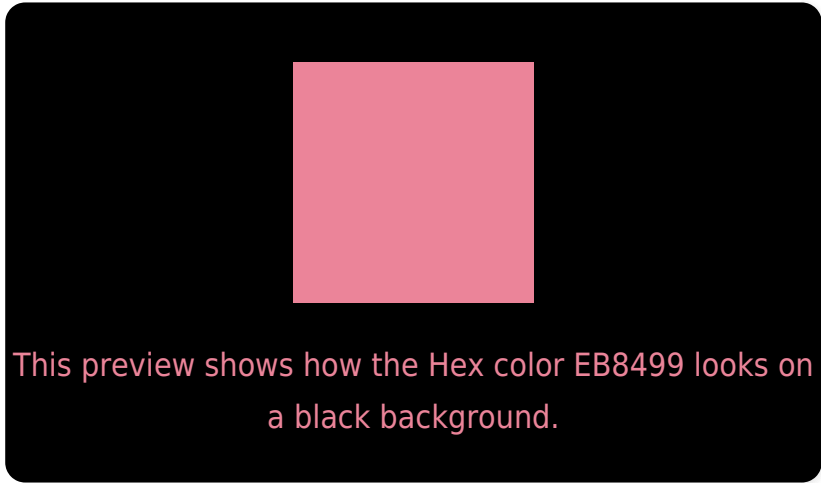
Large Text (above 18pt) WCAG AA × Fail

Any Text WCAG AA × Fail

Large Text (above 18pt) WCAG AAA × Fail

Any Text WCAG AAA × Fail

Black Background



Color Contrast Check

Large Text (above 18pt) WCAG AA ✓ Pass

Any Text WCAG AA ✓ Pass

Large Text (above 18pt) WCAG AAA ✓ Pass

Any Text WCAG AAA ✓ Pass

If you want to check with other color combinations, try the [Color Contrast Checker](#).

Hex EB8499 Background



This preview shows how black text looks on a background with the Hex color EB8499.

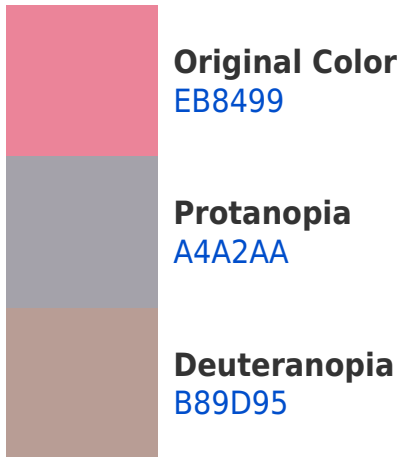



This preview shows how white text looks on a background with the Hex color EB8499.

Color Blindness Simulation

Color vision deficiency is a very complex topic, and I could not describe the different causes any better than Wikipedia does, so if you want to learn more, you should check out their [article about color blindness](#).

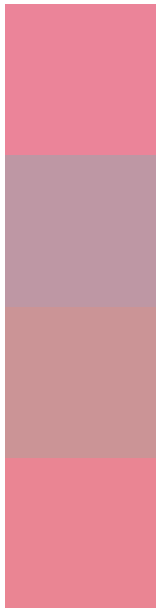
Dichromacy





Tritanopia
EA868F

Trichromacy



Original Color
EB8499

Protanomaly
BE97A4

Deuteranomaly
CB9496

Tritanomaly
EA8593

Monochromacy



Original Color
EB8499

Achromatopsia
A5A5A5

Achromatomaly
BE99A1

CSS Examples

Text

The CSS property to change the color of the text to Hex EB8499 is called "color". The color property can be set on classes, ids or directly on the HTML element.

This example shows how text in the color #EB8499 looks like.

```
.text, #text, p{  
    color:#EB8499  
}
```

If you want to add a text shadow in that color use the text-shadow property, you can generate a text shadow directly with our [CSS Text Shadow Generator](#).

Here you see how black text with a 4 pixel #EB8499 colored shadow looks like.

```
.shadow{ text-shadow: 4px 4px 2px #EB8499
}
```

Border

The CSS property to change the border of an element to Hex EB8499 is called "border". The border property can be set on classes, ids or directly on the HTML element.

This example shows the color as border, it can be applied via the CSS property "border" or "border-color".

```
.border, #border, table{ border:4px solid
#EB8499 }
```

If only the border color should be changed use the property `border-color`.

```
.border{ border-color:#EB8499 }
```

If you want to add a box shadow in that color use:

Here you see how a box with a 4 pixel #EB8499 colored shadow looks like.

```
.boxshadow{ -moz-box-shadow:4px 4px 4px  
4px #EB8499; -webkit-box-shadow:4px 4px  
4px 4px #EB8499; box-shadow:4px 4px 4px  
4px #EB8499 }
```

Background

The CSS property to change the background color of an element to Hex EB8499 is called "background". The background property can be set on classes, ids or directly on the HTML element.

```
.background, #background, body{  
background:#EB8499 }
```

If only the background color should be changed can be used:

```
.background{ background-color:#EB8499 }
```

This example shows the color as background, it is applied via the CSS property "background".

To optimize and compress your CSS code, you can use our [online CSS compressor and optimizer](#) based on csstidy. If you want to create a linear or radial gradient as background or border, check our [CSS Gradient Generator](#).

Hey! You found this booklet interesting? Support Converting Colors with the new Membership Option!

The pro membership hides all ads, plus gives you double the colors in the color bucket, and more awesome pro features!

[Learn more, Memberships starting at \\$2.50/m!](#)

**Follow me
on Twitter!**

@ConvertingColor