

# Converting Colors

Hex(EBA89B)

Have a look what the booklet for  
Hex(EBA89B) contains.

<b>Hex(EBA89B)</b> .....	3
<i><b>Conversions</b></i> .....	4
<i><b>Details</b></i> .....	6
<i><b>Harmonies</b></i> .....	11
<i><b>Previews</b></i> .....	23
<i><b>Color Blindness Simulation</b></i> .....	26
<i><b>CSS Examples</b></i> .....	29

# **Color**

**Hex(EBA89B)**

# Conversions

## Conversions Part 1

Format	Color
Hex	EBA89B
RGB	235, 168, 155
RGB Percent	92%, 66%, 61%
CMY	0.0784, 0.3412, 0.3922
CMYK	0.00, 0.29, 0.34, 0.08
HSL	10°, 67%, 76%
HSV	10°, 34%, 92%
XYZ	54.1800, 48.0340, 37.4262
YIQ	186.5510, 44.1050, 10.1610

# Conversions

## Conversions Part 2

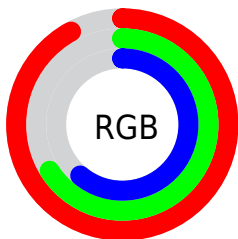
<b>Format</b>	<b>Color</b>
<b>R<sub>YB</sub></b>	235, 171, 155
Decimal	15444123
CIE <sub>Lab</sub>	74.85, 23.00, 16.53
CIE <sub>LCh</sub>	75, 28.322, 35.713
Yxy	48.0340, 0.3880, 0.3440
Android (android.graphics.Color)	4293634203 (0xFFEBA89B)
YUV	186.5510, -15.5546, 42.4898
Hunter-Lab	69.3066, 18.2548, 16.4974

# Details

The Hex color **EBA89B** is a light color, and the websafe version is hex **CC9999**. A complement of this color would be **9BDEEB**, and the grayscale version is **BBBBBB**.

A 20% lighter version of the original color is **FFDFD1**, and **B17468** is the 20% darker color. If you saturate the color by 10%, you get **EB9484**, and if you desaturate by 10%, it is **EBBCB3**.

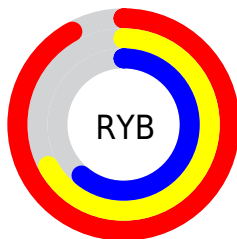
# Distribution



Red (92%)

Green (66%)

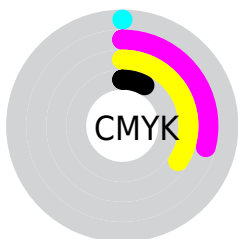
Blue (61%)



Red (92%)

Yellow (67%)

Blue (61%)

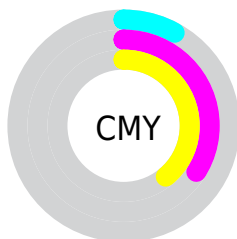


Cyan (0%)

Magenta (29%)

Yellow (34%)

Black (8%)



Cyan (8%)

Magenta (34%)

Yellow (39%)

# Brightness & Saturation Gradients

These gradients show how the Hex color EBA89B changes by changing the brightness by 10 percent. The first figure shows a shift by +10% for each color and the second figure -10%.

Similar to the brightness gradients but the following saturation gradients show a change of the Hex color EBA89B by changing the saturation by 10% instead.



 EBA89B

 EBA89B

FFFFFF

 CE8D81

 FFDFD1

 B17468

 FFFCEE

 965B50

 7A4339

 602C23

 46150E

 2E0000

 020000

 000000

 EBA89B

 EBA89B

 EB9484

 EBBCB3

 EB816C

 EBCFCA

 EB6D55

 EBE3E2

 EB593D

 EBF7F9

 EB4625

 EBFFFF

 EB320E

 EB2600

# Harmonies

## Analogous

The Analogous color harmony consists of three colors that are next to each other on the color wheel.



ECA5B4



EBA89B



DDAF89

# Triad

The Triadic color harmony groups three colors that are evenly spaced from another and form a triangle on the color wheel.



EBA89B



8CC5A2



9FB9EC

# Complementary

The Complementary color scheme is a pair of colors which are on the opposite of each other on the color wheel.



EBA89B



9BDEEB

# Split Complementary

Split-complementary colors differ from the complementary color scheme. The scheme consists of three colors, the original color and two neighbors of the complement color.



7CC1E7



EBA89B



72C7BC

# Square

The Square scheme is like the rectangle color scheme, but the four colors are evenly spaced on the color wheel.



EBA89B



AAC08D



6AC5D6



C3B0E3

# Rectangle

The Rectangle color scheme consists of four colors that form a rectangle on the color wheel.



EBA89B



CFB584



6AC5D6



92BCEC

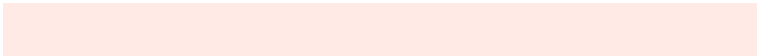


# Sweetspot

The Sweet Spot groups the original color and five complimentary colors.



EBA89B



FFEAE6



EB9BDF



807370



000000



808080



# Same Dimension

The Same Dimension uses a secret algorithm to generate beautiful new colors.



EBA89B



FFA796



EBCF9B



756B6A



B51D00



360900

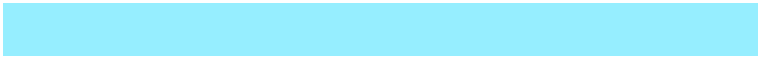


# Inverse Universe

The Inverse Universe completely reimagines the original color for something new.



9BDEEB



96EEFF



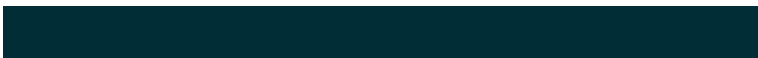
9BB7EB



6A7375



0098B5



002D36



# Previews

## White Background



This preview shows how the Hex color EBA89B looks on a white background.

## Color Contrast Check

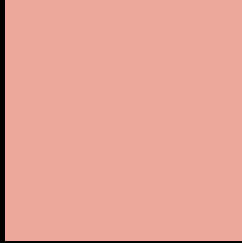
Large Text (above 18pt) WCAG AA × Fail

Any Text WCAG AA × Fail

Large Text (above 18pt) WCAG AAA × Fail

Any Text WCAG AAA × Fail

# Black Background



This preview shows how the Hex color EBA89B looks on a black background.

## Color Contrast Check

Large Text (above 18pt) WCAG AA ✓ Pass

Any Text WCAG AA ✓ Pass

Large Text (above 18pt) WCAG AAA ✓ Pass

Any Text WCAG AAA ✓ Pass

If you want to check with other color combinations, try the [Color Contrast Checker](#).



## Hex EBA89B Background



This preview shows how black text looks on a background with the Hex color EBA89B.



This preview shows how white text looks on a background with the Hex color EBA89B.

# Color Blindness Simulation

Color vision deficiency is a very complex topic, and I could not describe the different causes any better than Wikipedia does, so if you want to learn more, you should check out their [article about color blindness](#).

## Dichromacy

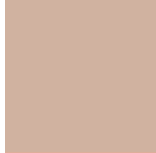




# Trichromacy



**Original Color**  
EBA89B



**Protanomaly**  
D0B2A0



**Deuteranomaly**  
DDAE9A

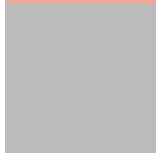


**Tritanomaly**  
ECA6A9

# Monochromacy



**Original Color**  
EBA89B



**Achromatopsia**  
BBBBBB



**Achromatomaly**  
CCB4AF

# CSS Examples

## Text

The CSS property to change the color of the text to Hex EBA89B is called "color". The color property can be set on classes, ids or directly on the HTML element.

This example shows how text in the color #EBA89B looks like.

```
.text, #text, p{  
    color:#EBA89B  
}
```

If you want to add a text shadow in that color use the text-shadow property, you can generate a text shadow directly with our [CSS Text Shadow Generator](#).

Here you see how black text with a 4 pixel #EBA89B colored shadow looks like.

```
.shadow{ text-shadow: 4px 4px 2px #EBA89B  
}
```

## Border

The CSS property to change the border of an element to Hex EBA89B is called "border". The border property can be set on classes, ids or directly on the HTML element.

This example shows the color as border, it can be applied via the CSS property "border" or "border-color".

```
.border, #border, table{ border:4px solid  
#EBA89B }
```

If only the border color should be changed use the property `border-color`.

```
.border{ border-color:#EBA89B }
```

If you want to add a box shadow in that color use:

Here you see how a box with a 4 pixel #EBA89B colored shadow looks like.

```
.boxshadow{ -moz-box-shadow:4px 4px 4px  
4px #EBA89B; -webkit-box-shadow:4px 4px  
4px 4px #EBA89B; box-shadow:4px 4px 4px  
4px #EBA89B }
```

# Background

The CSS property to change the background color of an element to Hex EBA89B is called "background". The background property can be set on classes, ids or directly on the HTML element.

```
.background, #background, body{  
background:#EBA89B }
```

If only the background color should be changed can be used:

```
.background{ background-color:#EBA89B }
```

This example shows the color as background, it is applied via the CSS property "background".

To optimize and compress your CSS code, you can use our [online CSS compressor and optimizer](#) based on csstidy. If you want to create a linear or radial gradient as background or border, check our [CSS Gradient Generator](#).



Hey! You found this booklet interesting? Support Converting Colors with the new Membership Option!

The pro membership hides all ads, plus gives you double the colors in the color bucket, and more awesome pro features!

**[Learn more, Memberships starting at \\$2.50/m!](#)**

**Follow me  
on Twitter!**

@ConvertingColor