

Converting Colors

Hex(EBADBA)

Have a look what the booklet for
Hex(EBADBA) contains.

| | |
|--|----|
| Hex(EBADBA) | 3 |
| <i>Conversions</i> | 4 |
| <i>Details</i> | 6 |
| <i>Harmonies</i> | 11 |
| <i>Previews</i> | 23 |
| <i>Color Blindness Simulation</i> | 26 |
| <i>CSS Examples</i> | 29 |

Color

Hex(EBADBA)

Conversions

Conversions Part 1

| Format | Color |
|-------------|----------------------------|
| Hex | EBADBA |
| RGB | 235, 173, 186 |
| RGB Percent | 92%, 68%, 73% |
| CMY | 0.0784, 0.3216, 0.2706 |
| CMYK | 0.00, 0.26, 0.21, 0.08 |
| HSL | 347°, 61%, 80% |
| HSV | 347°, 26%, 92% |
| XYZ | 58.0674, 51.0945, 53.2561 |
| YIQ | 193.0200, 32.7790, 17.1870 |

Conversions

Conversions Part 2

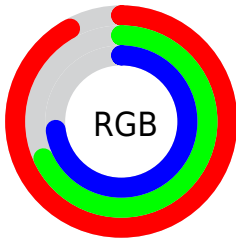
| Format | Color |
|-------------------------------------|-------------------------------|
| R _Y B | 235, 173, 186 |
| Decimal | 15445434 |
| CIE Lab | 76.74, 24.54, 2.31 |
| CIE LCh | 77, 24.646, 5.379 |
| Yxy | 51.0945, 0.3575, 0.3146 |
| Android (android.graphics.Color) | 4293635514 (0xFFEBADBA) |
| YUV | 193.0200, -3.4609, 36.8165 |
| Hunter-Lab | 71.4804, 19.9146, 5.8626 |

Details

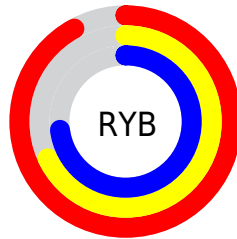
The Hex color **EBADBA** is a light color, and the websafe version is hex **CC9999**. A complement of this color would be **ADEBDE**, and the grayscale version is **C1C1C1**.

A 20% lighter version of the original color is **FFE5F2**, and **B27885** is the 20% darker color. If you saturate the color by 10%, you get **EB95A7**, and if you desaturate by 10%, it is **EBC5CD**.

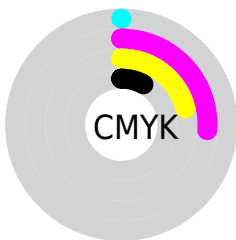
Distribution



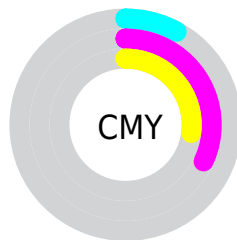
- Red (92%)
- Green (68%)
- Blue (73%)



- Red (92%)
- Yellow (68%)
- Blue (73%)



- Cyan (0%)
- Magenta (26%)
- Yellow (21%)
- Black (8%)



- Cyan (8%)
- Magenta (32%)
- Yellow (27%)

Brightness & Saturation Gradients

These gradients show how the Hex color EBADBA changes by changing the brightness by 10 percent. The first figure shows a shift by +10% for each color and the second figure -10%.

Similar to the brightness gradients but the following saturation gradients show a change of the Hex color EBADBA by changing the saturation by 10% instead.

 EBADBA

FFFFFF

 FFE5F2

 EBADBA

 CE929F

 B27885

 975F6C

 7C4754

 622F3D

 491927

 310212

 160000

 000000

 EBADBA

 EBADBA

 EB95A7

 EBC5CD

 EB7E95

 EBDCDF

 EB6782

 EBF4F2

 EB4F70

 EBFFFF

 EB385D

 EB204B

 EB0938

 EB0031

Harmonies

Analogous

The Analogous color harmony consists of three colors that are next to each other on the color wheel.



DEB0D1



EBADBA



EBAFA4

Triad

The Triadic color harmony groups three colors that are evenly spaced from another and form a triangle on the color wheel.



EBADBA



B1C498



8BC5E6

Complementary

The Complementary color scheme is a pair of colors which are on the opposite of each other on the color wheel.



EBADBA



ADEBDE

Split Complementary

Split-complementary colors differ from the complementary color scheme. The scheme consists of three colors, the original color and two neighbors of the complement color.



7DC9D7



EBADBA



97C9AA

Square

The Square scheme is like the rectangle color scheme, but the four colors are evenly spaced on the color wheel.



EBADBA



CABD90



83CAC1



A8BEEA

Rectangle

The Rectangle color scheme consists of four colors that form a rectangle on the color wheel.



EBADBA



E4B399



83CAC1



84C7E2

Sweetspot

The Sweet Spot groups the original color and five complimentary colors.



EBADBA



FFEBEF



DEADEB



807375



000000



808080

Same Dimension

The Same Dimension uses a secret algorithm to generate beautiful new colors.



EBADBA



FFADBF



EBBFAD



756A6C



B50026



36000B

Inverse Universe

The Inverse Universe completely reimagines the original color for something new.



EBADBA



FFADBF



ADD9EB



756A6C



B50026



36000B

Previews

White Background



This preview shows how the Hex color EBADBA looks on a white background.

Color Contrast Check

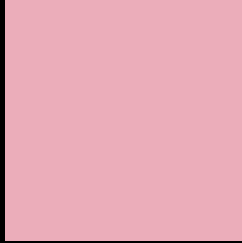
Large Text (above 18pt) WCAG AA × Fail

Any Text WCAG AA × Fail

Large Text (above 18pt) WCAG AAA × Fail

Any Text WCAG AAA × Fail

Black Background



This preview shows how the Hex color EBADBA looks on a black background.

Color Contrast Check

Large Text (above 18pt) WCAG AA ✓ Pass

Any Text WCAG AA ✓ Pass

Large Text (above 18pt) WCAG AAA ✓ Pass

Any Text WCAG AAA ✓ Pass

If you want to check with other color combinations, try the [Color Contrast Checker](#).

Hex EBADBA Background



This preview shows how black text looks on a background with the Hex color EBADBA.

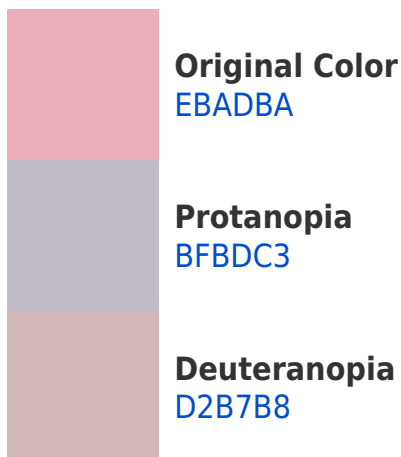


This preview shows how white text looks on a background with the Hex color EBADBA.

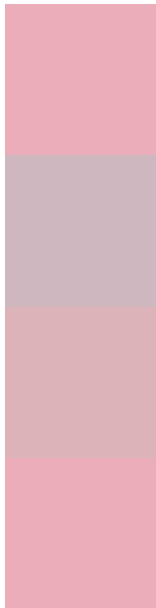
Color Blindness Simulation

Color vision deficiency is a very complex topic, and I could not describe the different causes any better than Wikipedia does, so if you want to learn more, you should check out their [article about color blindness](#).

Dichromacy



Trichromacy



Original Color
EBADBA

Protanomaly
CFB7C0

Deuteranomaly
DBB3B9

Tritanomaly
EBADBA

Monochromacy



Original Color
EBADBA

Achromatopsia
C1C1C1

Achromatomaly
D0BABE

CSS Examples

Text

The CSS property to change the color of the text to Hex EBADBA is called "color". The color property can be set on classes, ids or directly on the HTML element.

This example shows how text in the color #EBADBA looks like.

```
.text, #text, p{  
    color:#EBADBA  
}
```

If you want to add a text shadow in that color use the text-shadow property, you can generate a text shadow directly with our [CSS Text Shadow Generator](#).

Here you see how black text with a 4 pixel #EBADBA colored shadow looks like.

```
.shadow{ text-shadow: 4px 4px 2px #EBADBA
}
```

Border

The CSS property to change the border of an element to Hex EBADBA is called "border". The border property can be set on classes, ids or directly on the HTML element.

This example shows the color as border, it can be applied via the CSS property "border" or "border-color".

```
.border, #border, table{ border:4px solid
#EBADBA }
```

If only the border color should be changed use the property `border-color`.

```
.border{ border-color:#EBADBA }
```

If you want to add a box shadow in that color use:

Here you see how a box with a 4 pixel #EBADBA colored shadow looks like.

```
.boxshadow{ -moz-box-shadow:4px 4px 4px  
4px #EBADBA; -webkit-box-shadow:4px 4px  
4px 4px #EBADBA; box-shadow:4px 4px 4px  
4px #EBADBA }
```

Background

The CSS property to change the background color of an element to Hex EBADBA is called "background". The background property can be set on classes, ids or directly on the HTML element.

```
.background, #background, body{  
background:#EBADBA }
```

If only the background color should be changed can be used:

```
.background{ background-color:#EBADBA }
```

This example shows the color as background, it is applied via the CSS property "background".

To optimize and compress your CSS code, you can use our [online CSS compressor and optimizer](#) based on csstidy. If you want to create a linear or radial gradient as background or border, check our [CSS Gradient Generator](#).

Hey! You found this booklet interesting? Support Converting Colors with the new Membership Option!

The pro membership hides all ads, plus gives you double the colors in the color bucket, and more awesome pro features!

[Learn more, Memberships starting at \\$2.50/m!](#)

**Follow me
on Twitter!**

@ConvertingColor