

# Converting Colors

Hex(EBAFBA)

Have a look what the booklet for  
Hex(EBAFBA) contains.

<b>Hex(EBAFBA)</b> .....	3
<i><b>Conversions</b></i> .....	4
<i><b>Details</b></i> .....	6
<i><b>Harmonies</b></i> .....	11
<i><b>Previews</b></i> .....	23
<i><b>Color Blindness Simulation</b></i> .....	26
<i><b>CSS Examples</b></i> .....	29

# **Color**

**Hex(EBAFBA)**

# Conversions

## Conversions Part 1

Format	Color
Hex	EBAFBA
RGB	235, 175, 186
RGB Percent	92%, 69%, 73%
CMY	0.0784, 0.3137, 0.2706
CMYK	0.00, 0.26, 0.21, 0.08
HSL	349°, 60%, 80%
HSV	349°, 26%, 92%
XYZ	58.4538, 51.8673, 53.3849
YIQ	194.1940, 32.2290, 16.1410

# Conversions

## Conversions Part 2

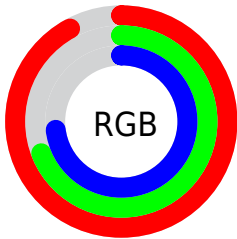
<b>Format</b>	<b>Color</b>
R <sub>Y</sub> B	235, 175, 186
Decimal	15445946
CIE Lab	77.20, 23.47, 2.99
CIE LCh	77, 23.661, 7.249
Yxy	51.8673, 0.3571, 0.3168
Android (android.graphics.Color)	4293636026 (0xFFEBAFBA)
YUV	194.1940, -4.0396, 35.7869
Hunter-Lab	72.0189, 18.8456, 6.4638

# Details

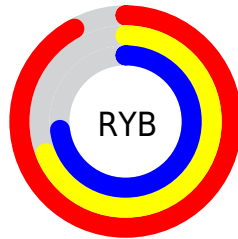
The Hex color **EBAFBA** is a light color, and the websafe version is hex **CC9999**. A complement of this color would be **AFEBE0**, and the grayscale version is **C2C2C2**.

A 20% lighter version of the original color is **FFE7F2**, and **B27A85** is the 20% darker color. If you saturate the color by 10%, you get **EB98A7**, and if you desaturate by 10%, it is **EBC7CD**.

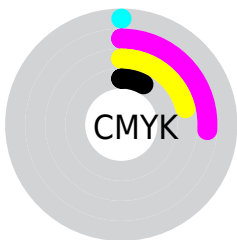
# Distribution



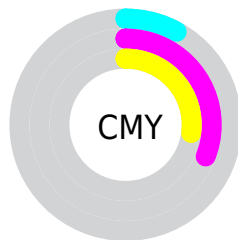
- Red (92%)
- Green (69%)
- Blue (73%)



- Red (92%)
- Yellow (69%)
- Blue (73%)



- Cyan (0%)
- Magenta (26%)
- Yellow (21%)
- Black (8%)



- Cyan (8%)
- Magenta (31%)
- Yellow (27%)

# Brightness & Saturation Gradients

These gradients show how the Hex color EBAFBA changes by changing the brightness by 10 percent. The first figure shows a shift by +10% for each color and the second figure -10%.

Similar to the brightness gradients but the following saturation gradients show a change of the Hex color EBAFBA by changing the saturation by 10% instead.



 EBAFBA

FFFFFF

 FFE7F2

 EBAFBA

 CE949F

 B27A85

 97616C

 7C4954

 62313D

 491B27

 310412

 180001

 000000

 EBAFBA

 EBAFBA

 EB98A7

 EBC7CD

 EB8094

 EBDEE0

 EB6980

 EBF6F4

 EB516D

 EBFFFF

 EB3A5A

 EB2247

 EB0B34

 EB002B

# Harmonies

## Analogous

The Analogous color harmony consists of three colors that are next to each other on the color wheel.



E0B1D0



EBAFBA



EAB2A5

# Triad

The Triadic color harmony groups three colors that are evenly spaced from another and form a triangle on the color wheel.



EBAFBA



B1C59B



90C5E6

# Complementary

The Complementary color scheme is a pair of colors which are on the opposite of each other on the color wheel.



EBAFBA



AFEBE0

# Split Complementary

Split-complementary colors differ from the complementary color scheme. The scheme consists of three colors, the original color and two neighbors of the complement color.



82CAD8



EBAFBA



99CAAD

# Square

The Square scheme is like the rectangle color scheme, but the four colors are evenly spaced on the color wheel.



EBAFBA



CABF93



86CBC3



ACBFEA

# Rectangle

The Rectangle color scheme consists of four colors that form a rectangle on the color wheel.



EBAFBA



E3B59B



86CBC3



8AC7E3



# Sweetspot

The Sweet Spot groups the original color and five complimentary colors.



EBAFBA



FFECEE



E0AFEB



807375



000000



808080



# Same Dimension

The Same Dimension uses a secret algorithm to generate beautiful new colors.



EBAFBA



FFB0BE



EBC2AF



756A6C



B50021



36000A



# Inverse Universe

The Inverse Universe completely reimagines the original color for something new.



EBAFBA



FFB0BE



AFD8EB



756A6C



B50021



36000A



# Previews

## White Background



This preview shows how the Hex color EBAFBA looks on a white background.

## Color Contrast Check

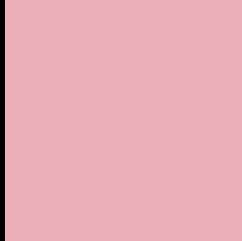
Large Text (above 18pt) WCAG AA × Fail

Any Text WCAG AA × Fail

Large Text (above 18pt) WCAG AAA × Fail

Any Text WCAG AAA × Fail

# Black Background



This preview shows how the Hex color EBAFBA looks on a black background.

## Color Contrast Check

Large Text (above 18pt) WCAG AA ✓ Pass

Any Text WCAG AA ✓ Pass

Large Text (above 18pt) WCAG AAA ✓ Pass

Any Text WCAG AAA ✓ Pass

If you want to check with other color combinations, try the [Color Contrast Checker](#).



## Hex EBAFBA Background



This preview shows how black text looks on a background with the Hex color EBAFBA.

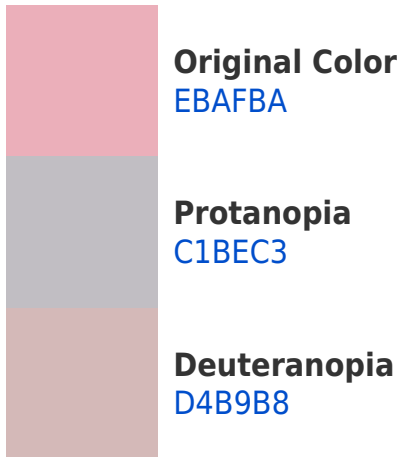


This preview shows how white text looks on a background with the Hex color EBAFBA.

# Color Blindness Simulation

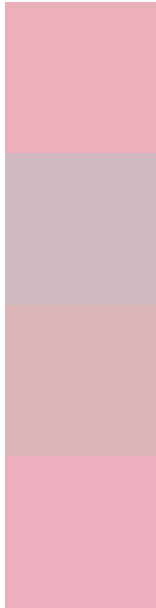
Color vision deficiency is a very complex topic, and I could not describe the different causes any better than Wikipedia does, so if you want to learn more, you should check out their [article about color blindness](#).

## Dichromacy





# Trichromacy



**Original Color**  
EBAFBA

**Protanomaly**  
D0B9C0

**Deuteranomaly**  
DCB5B9

**Tritanomaly**  
EBAFBB

# Monochromacy



**Original Color**  
EBAFBA

**Achromatopsia**  
C2C2C2

**Achromatomaly**  
D1BBBF

# CSS Examples

## Text

The CSS property to change the color of the text to Hex EBAFBA is called "color". The color property can be set on classes, ids or directly on the HTML element.

This example shows how text in the color #EBAFBA looks like.

```
.text, #text, p{  
    color:#EBAFBA  
}
```

If you want to add a text shadow in that color use the text-shadow property, you can generate a text shadow directly with our [CSS Text Shadow Generator](#).

Here you see how black text with a 4 pixel #EBAFBA colored shadow looks like.

```
.shadow{ text-shadow: 4px 4px 2px #EBAFBA
}
```

## Border

The CSS property to change the border of an element to Hex EBAFBA is called "border". The border property can be set on classes, ids or directly on the HTML element.

This example shows the color as border, it can be applied via the CSS property "border" or "border-color".

```
.border, #border, table{ border:4px solid
#EBAFBA }
```

If only the border color should be changed use the property `border-color`.

```
.border{ border-color:#EBAFBA }
```

If you want to add a box shadow in that color use:

Here you see how a box with a 4 pixel #EBAFBA colored shadow looks like.

```
.boxshadow{ -moz-box-shadow:4px 4px 4px  
4px #EBAFBA; -webkit-box-shadow:4px 4px  
4px 4px #EBAFBA; box-shadow:4px 4px 4px  
4px #EBAFBA }
```

# Background

The CSS property to change the background color of an element to Hex EBAFBA is called "background". The background property can be set on classes, ids or directly on the HTML element.

```
.background, #background, body{  
background:#EBAFBA }
```

If only the background color should be changed can be used:

```
.background{ background-color:#EBAFBA }
```

This example shows the color as background, it is applied via the CSS property "background".

To optimize and compress your CSS code, you can use our [online CSS compressor and optimizer](#) based on csstidy. If you want to create a linear or radial gradient as background or border, check our [CSS Gradient Generator](#).



Hey! You found this booklet interesting? Support Converting Colors with the new Membership Option!

The pro membership hides all ads, plus gives you double the colors in the color bucket, and more awesome pro features!

**[Learn more, Memberships starting at \\$2.50/m!](#)**

**Follow me  
on Twitter!**

@ConvertingColor