

Converting Colors

Hex(EBBFDC)

Have a look what the booklet for
Hex(EBBFDC) contains.

Hex(EBBFDC)	3
<i>Conversions</i>	4
<i>Details</i>	6
<i>Harmonies</i>	11
<i>Previews</i>	23
<i>Color Blindness Simulation</i>	26
<i>CSS Examples</i>	29

Color

Hex(EBBFDC)

Conversions

Conversions Part 1

Format	Color
Hex	EBBFDC
RGB	235, 191, 220
RGB Percent	92%, 75%, 86%
CMY	0.0784, 0.2510, 0.1373
CMYK	0.00, 0.19, 0.06, 0.08
HSL	320°, 52%, 84%
HSV	320°, 19%, 92%
XYZ	65.8100, 60.0911, 75.8403
YIQ	207.4620, 16.9150, 18.3470

Conversions

Conversions Part 2

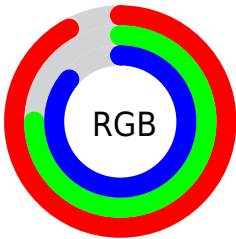
Format	Color
R _Y B	235, 191, 220
Decimal	15450076
CIE Lab	81.89, 20.41, -8.52
CIE LCh	82, 22.114, 337.353
Yxy	60.0911, 0.3262, 0.2979
Android (android.graphics.Color)	4293640156 (0xFFE8BFD8)
YUV	207.4620, 6.1812, 24.1508
Hunter-Lab	77.5184, 15.8820, -3.7436

Details

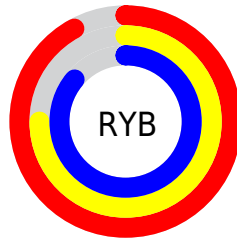
The Hex color **EBBFDC** is a light color, and the websafe version is hex **FFCCFF**. A complement of this color would be **BFEBCE**, and the grayscale version is **CFCFCF**.

A 20% lighter version of the original color is **FFF8FF**, and **B389A5** is the 20% darker color. If you saturate the color by 10%, you get **EBA8D4**, and if you desaturate by 10%, it is **EBD7E4**.

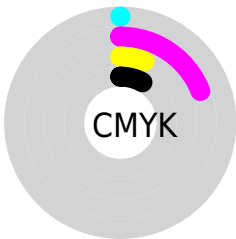
Distribution



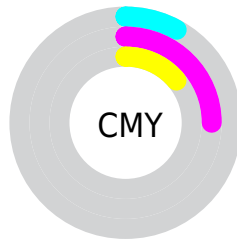
- Red (92%)
- Green (75%)
- Blue (86%)



- Red (92%)
- Yellow (75%)
- Blue (86%)



- Cyan (0%)
- Magenta (19%)
- Yellow (6%)
- Black (8%)



- Cyan (8%)
- Magenta (25%)
- Yellow (14%)

Brightness & Saturation Gradients

These gradients show how the Hex color EBBFDC changes by changing the brightness by 10 percent. The first figure shows a shift by +10% for each color and the second figure -10%.

Similar to the brightness gradients but the following saturation gradients show a change of the Hex color EBBFDC by changing the saturation by 10% instead.

 EBBFDC

 EBBFDC

FFFFFF

 CFA4C0

 FFF8FF

 B389A5

 98708B

 7E5771

 643F59

 4C2941

 34132B

 210017

 000000

 EBBFDC

 EBBFDC

 EBA8D4

 EBD7E4

 EB90CC

 EBEEEE

 EB79C4

 EBFFF4

 EB61BC

 EBFFFC

 EB4AB4

 EBFFFF

 EB32AC

 EB1BA4

 EB039C

 EB009B

Harmonies

Analogous

The Analogous color harmony consists of three colors that are next to each other on the color wheel.



D6C5ED



EBBFDC



F6BDC7

Triad

The Triadic color harmony groups three colors that are evenly spaced from another and form a triangle on the color wheel.



EBBFDC



D6CCA3



94D6E4

Complementary

The Complementary color scheme is a pair of colors which are on the opposite of each other on the color wheel.



EBBFDC



BFEBCE

Split Complementary

Split-complementary colors differ from the complementary color scheme. The scheme consists of three colors, the original color and two neighbors of the complement color.



97D8D0



EBBFDC



BFD2AA

Square

The Square scheme is like the rectangle color scheme, but the four colors are evenly spaced on the color wheel.



EBBFDC



EAC5A6



A8D6BB



A1D2F1

Rectangle

The Rectangle color scheme consists of four colors that form a rectangle on the color wheel.



EBBFDC



F7BEB9



A8D6BB



93D7DE

Sweetspot

The Sweet Spot groups the original color and five complimentary colors.



EBBFDC



FFF0FA



CEBFEB



80777C



000000



808080

Same Dimension

The Same Dimension uses a secret algorithm to generate beautiful new colors.



EBBFDC



FFC7EC



EBBFC6



756A71



B50077



360023

Inverse Universe

The Inverse Universe completely reimagines the original color for something new.



EBBFDC



FFC7EC



BFEBE4



756A71



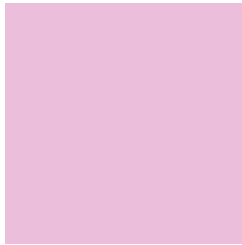
B50077



360023

Previews

White Background



This preview shows how the Hex color EBBFDC looks on a white background.

Color Contrast Check

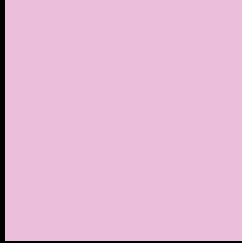
Large Text (above 18pt) WCAG AA × Fail

Any Text WCAG AA × Fail

Large Text (above 18pt) WCAG AAA × Fail

Any Text WCAG AAA × Fail

Black Background



This preview shows how the Hex color EBBFDC looks on a black background.

Color Contrast Check

Large Text (above 18pt) WCAG AA ✓ Pass

Any Text WCAG AA ✓ Pass

Large Text (above 18pt) WCAG AAA ✓ Pass

Any Text WCAG AAA ✓ Pass

If you want to check with other color combinations, try the [Color Contrast Checker](#).

Hex EBBFDC Background



This preview shows how black text looks on a background with the Hex color EBBFDC.

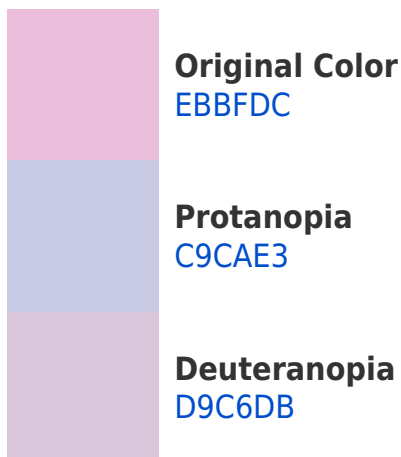


This preview shows how white text looks on a background with the Hex color EBBFDC.

Color Blindness Simulation

Color vision deficiency is a very complex topic, and I could not describe the different causes any better than Wikipedia does, so if you want to learn more, you should check out their [article about color blindness](#).

Dichromacy





Tritanopia
E9C1D0

Trichromacy



Original Color
EBBFDC



Protanomaly
D5C6E0



Deuteranomaly
E0C3DB

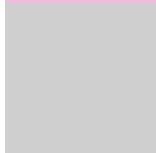


Tritanomaly
EAC0D4

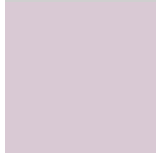
Monochromacy



Original Color
EBBFDC



Achromatopsia
CFCFCF



Achromatomaly
D9C9D4

CSS Examples

Text

The CSS property to change the color of the text to Hex EBBFDC is called "color". The color property can be set on classes, ids or directly on the HTML element.

This example shows how text in the color #EBBFDC looks like.

```
.text, #text, p{  
    color:#EBBFDC  
}
```

If you want to add a text shadow in that color use the text-shadow property, you can generate a text shadow directly with our [CSS Text Shadow Generator](#).

Here you see how black text with a 4 pixel #EBBFDC colored shadow looks like.

```
.shadow{ text-shadow: 4px 4px 2px #EBBFDC
}
```

Border

The CSS property to change the border of an element to Hex EBBFDC is called "border". The border property can be set on classes, ids or directly on the HTML element.

This example shows the color as border, it can be applied via the CSS property "border" or "border-color".

```
.border, #border, table{ border:4px solid
#EBBFDC }
```

If only the border color should be changed use the property `border-color`.

```
.border{ border-color:#EBBFDC }
```

If you want to add a box shadow in that color use:

Here you see how a box with a 4 pixel #EBBFDC colored shadow looks like.

```
.boxshadow{ -moz-box-shadow:4px 4px 4px  
4px #EBBFDC; -webkit-box-shadow:4px 4px  
4px 4px #EBBFDC; box-shadow:4px 4px 4px  
4px #EBBFDC }
```

Background

The CSS property to change the background color of an element to Hex EBBFDC is called "background". The background property can be set on classes, ids or directly on the HTML element.

```
.background, #background, body{  
background:#EBBFDC }
```

If only the background color should be changed can be used:

```
.background{ background-color:#EBBFDC }
```

This example shows the color as background, it is applied via the CSS property "background".

To optimize and compress your CSS code, you can use our [online CSS compressor and optimizer](#) based on csstidy. If you want to create a linear or radial gradient as background or border, check our [CSS Gradient Generator](#).

Hey! You found this booklet interesting? Support Converting Colors with the new Membership Option!

The pro membership hides all ads, plus gives you double the colors in the color bucket, and more awesome pro features!

[Learn more, Memberships starting at \\$2.50/m!](#)

**Follow me
on Twitter!**

@ConvertingColor