

Converting Colors

Hex(EBC1E5)

Have a look what the booklet for
Hex(EBC1E5) contains.

Hex(EBC1E5)	3
<i>Conversions</i>	4
<i>Details</i>	6
<i>Harmonies</i>	11
<i>Previews</i>	23
<i>Color Blindness Simulation</i>	26
<i>CSS Examples</i>	29

Color

Hex(EBC1E5)

Conversions

Conversions Part 1

Format	Color
Hex	EBC1E5
RGB	235, 193, 229
RGB Percent	92%, 76%, 90%
CMY	0.0784, 0.2431, 0.1020
CMYK	0.00, 0.18, 0.03, 0.08
HSL	309°, 51%, 84%
HSV	309°, 18%, 92%
XYZ	67.4738, 61.4592, 82.4353
YIQ	209.6620, 13.4760, 20.1000

Conversions

Conversions Part 2

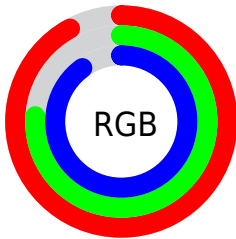
Format	Color
R _{YB}	235, 193, 229
Decimal	15450597
CIE _{Lab}	82.63, 20.93, -12.24
CIE _{LCh}	83, 24.244, 329.676
Yxy	61.4592, 0.3192, 0.2908
Android (android.graphics.Color)	4293640677 (0xFFEBC1E5)
YUV	209.6620, 9.5336, 22.2214
Hunter-Lab	78.3959, 16.4384, -7.4678

Details

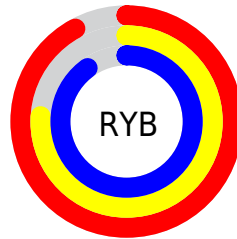
The Hex color **EBC1E5** is a light color, and the websafe version is hex **FFCCFF**. A complement of this color would be **C1EBC7**, and the grayscale version is **D2D2D2**.

A 20% lighter version of the original color is **FFFAFF**, and **B38BAE** is the 20% darker color. If you saturate the color by 10%, you get **EBAAE2**, and if you desaturate by 10%, it is **EBD9E8**.

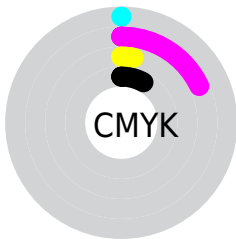
Distribution



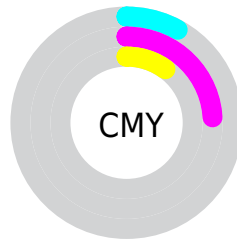
- Red (92%)
- Green (76%)
- Blue (90%)



- Red (92%)
- Yellow (76%)
- Blue (90%)



- Cyan (0%)
- Magenta (18%)
- Yellow (3%)
- Black (8%)



- Cyan (8%)
- Magenta (24%)
- Yellow (10%)

Brightness & Saturation Gradients

These gradients show how the Hex color EBC1E5 changes by changing the brightness by 10 percent. The first figure shows a shift by +10% for each color and the second figure -10%.

Similar to the brightness gradients but the following saturation gradients show a change of the Hex color EBC1E5 by changing the saturation by 10% instead.

 EBC1E5

 EBC1E5

FFFFFF

 CFA6C9

 FFFAFF

 B38BAE

 987293

 7E5979

 644160

 4C2A49

 351532

 21001D

 000000

 EBC1E5

 EBC1E5

 EBAAE2

 EBD9E8

 EB92DE

 EBF0EC

 EB7ADB

 EBFFEF

 EB63D8

 EBFFF2

 EB4BD4

 EBFFF6

 EB34D1

 EBFFF9

 EB1DCE

 EBFFFC

 EB05CA

 EBFFFF

 EB00C9

Harmonies

Analogous

The Analogous color harmony consists of three colors that are next to each other on the color wheel.



D1C8F5



EBC1E5



FABECF

Triad

The Triadic color harmony groups three colors that are evenly spaced from another and form a triangle on the color wheel.



EBC1E5



DFCCA0



8EDAE3

Complementary

The Complementary color scheme is a pair of colors which are on the opposite of each other on the color wheel.



EBC1E5



C1EBC7

Split Complementary

Split-complementary colors differ from the complementary color scheme. The scheme consists of three colors, the original color and two neighbors of the complement color.



97DBCD



EBC1E5



C7D3A6

Square

The Square scheme is like the rectangle color scheme, but the four colors are evenly spaced on the color wheel.



EBC1E5



F2C5A7



ADD8B6



99D6F4

Rectangle

The Rectangle color scheme consists of four colors that form a rectangle on the color wheel.



EBC1E5



FDBEBF



ADD8B6



8FDBDC

Sweetspot

The Sweet Spot groups the original color and five complimentary colors.



EBC1E5



FFF2FD



C7C1EB



80787E



000000



808080

Same Dimension

The Same Dimension uses a secret algorithm to generate beautiful new colors.



EBC1E5



FFC9F7



EBC1D0



756A74



B5009B



36002E

Inverse Universe

The Inverse Universe completely reimagines the original color for something new.



EBC1E5



FFC9F7



C1EBDC



756A74



B5009B



36002E

Previews

White Background



This preview shows how the Hex color EBC1E5 looks on a white background.

Color Contrast Check

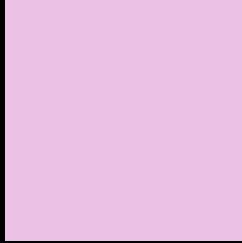
Large Text (above 18pt) WCAG AA × Fail

Any Text WCAG AA × Fail

Large Text (above 18pt) WCAG AAA × Fail

Any Text WCAG AAA × Fail

Black Background



This preview shows how the Hex color EBC1E5 looks on a black background.

Color Contrast Check

Large Text (above 18pt) WCAG AA ✓ Pass

Any Text WCAG AA ✓ Pass

Large Text (above 18pt) WCAG AAA ✓ Pass

Any Text WCAG AAA ✓ Pass

If you want to check with other color combinations, try the [Color Contrast Checker](#).

Hex EBC1E5 Background



This preview shows how black text looks on a background with the Hex color EBC1E5.

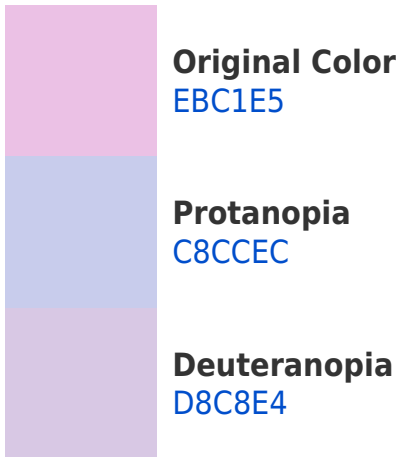


This preview shows how white text looks on a background with the Hex color EBC1E5.

Color Blindness Simulation

Color vision deficiency is a very complex topic, and I could not describe the different causes any better than Wikipedia does, so if you want to learn more, you should check out their [article about color blindness](#).

Dichromacy



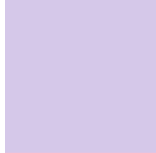


Tritanopia
E9C4D3

Trichromacy



Original Color
EBC1E5



Protanomaly
D5C8E9



Deuteranomaly
DFC5E4

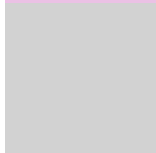


Tritanomaly
EAC3DA

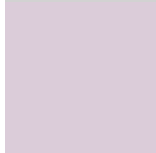
Monochromacy



Original Color
EBC1E5



Achromatopsia
D2D2D2



Achromatomaly
DBCCD9

CSS Examples

Text

The CSS property to change the color of the text to Hex EBC1E5 is called "color". The color property can be set on classes, ids or directly on the HTML element.

This example shows how text in the color #EBC1E5 looks like.

```
.text, #text, p{  
    color:#EBC1E5  
}
```

If you want to add a text shadow in that color use the text-shadow property, you can generate a text shadow directly with our [CSS Text Shadow Generator](#).

Here you see how black text with a 4 pixel #EBC1E5 colored shadow looks like.

```
.shadow{ text-shadow: 4px 4px 2px #EBC1E5  
}
```

Border

The CSS property to change the border of an element to Hex EBC1E5 is called "border". The border property can be set on classes, ids or directly on the HTML element.

This example shows the color as border, it can be applied via the CSS property "border" or "border-color".

```
.border, #border, table{ border:4px solid  
#EBC1E5 }
```

If only the border color should be changed use the property `border-color`.

```
.border{ border-color:#EBC1E5 }
```

If you want to add a box shadow in that color use:

Here you see how a box with a 4 pixel #EBC1E5 colored shadow looks like.

```
.boxshadow{ -moz-box-shadow:4px 4px 4px  
4px #EBC1E5; -webkit-box-shadow:4px 4px  
4px 4px #EBC1E5; box-shadow:4px 4px 4px  
4px #EBC1E5 }
```

Background

The CSS property to change the background color of an element to Hex EBC1E5 is called "background". The background property can be set on classes, ids or directly on the HTML element.

```
.background, #background, body{  
background:#EBC1E5 }
```

If only the background color should be changed can be used:

```
.background{ background-color:#EBC1E5 }
```

This example shows the color as background, it is applied via the CSS property "background".

To optimize and compress your CSS code, you can use our [online CSS compressor and optimizer](#) based on csstidy. If you want to create a linear or radial gradient as background or border, check our [CSS Gradient Generator](#).

Hey! You found this booklet interesting? Support Converting Colors with the new Membership Option!

The pro membership hides all ads, plus gives you double the colors in the color bucket, and more awesome pro features!

[Learn more, Memberships starting at \\$2.50/m!](#)

**Follow me
on Twitter!**

@ConvertingColor