

Converting Colors

Hex(EBC4EF)

Have a look what the booklet for
Hex(EBC4EF) contains.

Hex(EBC4EF)	3
<i>Conversions</i>	4
<i>Details</i>	6
<i>Harmonies</i>	11
<i>Previews</i>	23
<i>Color Blindness Simulation</i>	26
<i>CSS Examples</i>	29

Color

Hex(EBC4EF)

Conversions

Conversions Part 1

Format	Color
Hex	EBC4EF
RGB	235, 196, 239
RGB Percent	92%, 77%, 94%
CMY	0.0784, 0.2314, 0.0627
CMYK	0.02, 0.18, 0.00, 0.06
HSL	294°, 57%, 85%
HSV	294°, 18%, 94%
XYZ	69.5809, 63.3740, 90.2265
YIQ	212.5630, 9.4410, 21.6410

Conversions

Conversions Part 2

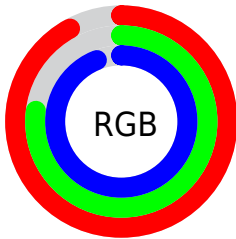
Format	Color
R _Y B	235, 196, 239
Decimal	15451375
CIE Lab	83.64, 21.15, -16.06
CIE LCh	84, 26.561, 322.787
Yxy	63.3740, 0.3118, 0.2840
Android (android.graphics.Color)	4293641455 (0xFFEBC4EF)
YUV	212.5630, 13.0334, 19.6772
Hunter-Lab	79.6078, 16.7035, -11.4731

Details

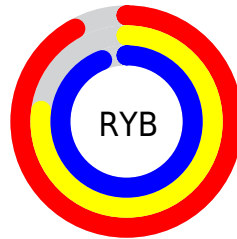
The Hex color **EBC4EF** is a light color, and the websafe version is hex **FFCCFF**. A complement of this color would be **C8EFC4**, and the grayscale version is **D4D4D4**.

A 20% lighter version of the original color is **FFDFFF**, and **B38EB7** is the 20% darker color. If you saturate the color by 10%, you get **E9ACEF**, and if you desaturate by 10%, it is **EDDCEF**.

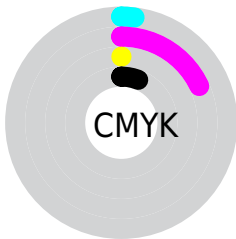
Distribution



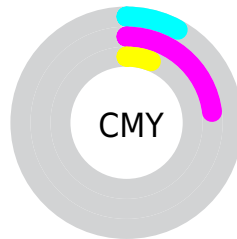
- Red (92%)
- Green (77%)
- Blue (94%)



- Red (92%)
- Yellow (77%)
- Blue (94%)



- Cyan (2%)
- Magenta (18%)
- Yellow (0%)
- Black (6%)



- Cyan (8%)
- Magenta (23%)
- Yellow (6%)

Brightness & Saturation Gradients

These gradients show how the Hex color EBC4EF changes by changing the brightness by 10 percent. The first figure shows a shift by +10% for each color and the second figure -10%.

Similar to the brightness gradients but the following saturation gradients show a change of the Hex color EBC4EF by changing the saturation by 10% instead.

 EBC4EF

 EBC4EF

FFFFFF

 CFA9D3

 FFFDFD

 B38EB7

 98749C

 7E5B82

 644469

 4C2D51

 351739

 200024

 00000C

 EBC4EF

 EBC4EF

 E9ACEF

 EDDCEF

 E794EF

 EFF4EF

 E47CEF

 F2FFEF

 E264EF

 F4FFEF

 E04DEF

 F6FFEF

 DE35EF

 F8FFEF

 DB1DEF

 FBFFEF

 D905EF

 FDFFEF

 D900EF

 FFFFEF

Harmonies

Analogous

The Analogous color harmony consists of three colors that are next to each other on the color wheel.



CDCCFE



EBC4EF



FEBFD8

Triad

The Triadic color harmony groups three colors that are evenly spaced from another and form a triangle on the color wheel.



EBC4EF



E9CD9F



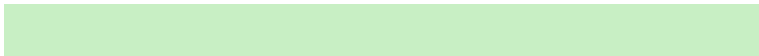
8ADEE3

Complementary

The Complementary color scheme is a pair of colors which are on the opposite of each other on the color wheel.



EBC4EF



C8EFC4

Split Complementary

Split-complementary colors differ from the complementary color scheme. The scheme consists of three colors, the original color and two neighbors of the complement color.



98DEC9



EBC4EF



CFD5A2

Square

The Square scheme is like the rectangle color scheme, but the four colors are evenly spaced on the color wheel.



EBC4EF



FCC5AA



B2DBB2



90DBF7

Rectangle

The Rectangle color scheme consists of four colors that form a rectangle on the color wheel.



EBC4EF



FFBFC6



B2DBB2



8DDFDB

Sweetspot

The Sweet Spot groups the original color and five complimentary colors.



EBC4EF



FEF2FF



C4C8EF



7F7880



000000



808080

Same Dimension

The Same Dimension uses a secret algorithm to generate beautiful new colors.



EBC4EF



FAC7FF



EFC4DE



776C78



A700B8



330038

Inverse Universe

The Inverse Universe completely reimagines the original color for something new.



EFC4C8



FFC7CC



C4EFD5



786C6D



B80011



380005

Previews

White Background



This preview shows how the Hex color EBC4EF looks on a white background.

Color Contrast Check

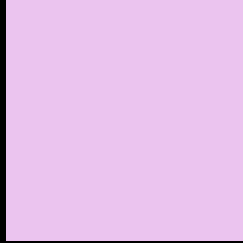
Large Text (above 18pt) WCAG AA × Fail

Any Text WCAG AA × Fail

Large Text (above 18pt) WCAG AAA × Fail

Any Text WCAG AAA × Fail

Black Background



This preview shows how the Hex color EBC4EF looks on a black background.

Color Contrast Check

Large Text (above 18pt) WCAG AA ✓ Pass

Any Text WCAG AA ✓ Pass

Large Text (above 18pt) WCAG AAA ✓ Pass

Any Text WCAG AAA ✓ Pass

If you want to check with other color combinations, try the [Color Contrast Checker](#).

Hex EBC4EF Background



This preview shows how black text looks on a background with the Hex color EBC4EF.



This preview shows how white text looks on a background with the Hex color EBC4EF.

Color Blindness Simulation

Color vision deficiency is a very complex topic, and I could not describe the different causes any better than Wikipedia does, so if you want to learn more, you should check out their [article about color blindness](#).

Dichromacy



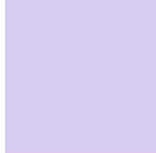


Tritanopia
E8C8D8

Trichromacy



Original Color
EBC4EF



Protanomaly
D5CBF3



Deuteranomaly
DEC8EE

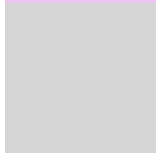


Tritanomaly
E9C7E0

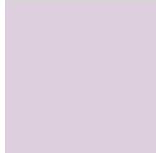
Monochromacy



Original Color
EBC4EF



Achromatopsia
D5D5D5



Achromatomaly
DDCFDE

CSS Examples

Text

The CSS property to change the color of the text to Hex EBC4EF is called "color". The color property can be set on classes, ids or directly on the HTML element.

This example shows how text in the color #EBC4EF looks like.

```
.text, #text, p{  
    color:#EBC4EF  
}
```

If you want to add a text shadow in that color use the text-shadow property, you can generate a text shadow directly with our [CSS Text Shadow Generator](#).

Here you see how black text with a 4 pixel #EBC4EF colored shadow looks like.

```
.shadow{ text-shadow: 4px 4px 2px #EBC4EF
}
```

Border

The CSS property to change the border of an element to Hex EBC4EF is called "border". The border property can be set on classes, ids or directly on the HTML element.

This example shows the color as border, it can be applied via the CSS property "border" or "border-color".

```
.border, #border, table{ border:4px solid
#EBC4EF }
```

If only the border color should be changed use the property `border-color`.

```
.border{ border-color:#EBC4EF }
```

If you want to add a box shadow in that color use:

Here you see how a box with a 4 pixel #EBC4EF colored shadow looks like.

```
.boxshadow{ -moz-box-shadow:4px 4px 4px  
4px #EBC4EF; -webkit-box-shadow:4px 4px  
4px 4px #EBC4EF; box-shadow:4px 4px 4px  
4px #EBC4EF }
```

Background

The CSS property to change the background color of an element to Hex EBC4EF is called "background". The background property can be set on classes, ids or directly on the HTML element.

```
.background, #background, body{  
background:#EBC4EF }
```

If only the background color should be changed can be used:

```
.background{ background-color:#EBC4EF }
```

This example shows the color as background, it is applied via the CSS property "background".

To optimize and compress your CSS code, you can use our [online CSS compressor and optimizer](#) based on csstidy. If you want to create a linear or radial gradient as background or border, check our [CSS Gradient Generator](#).

Hey! You found this booklet interesting? Support Converting Colors with the new Membership Option!

The pro membership hides all ads, plus gives you double the colors in the color bucket, and more awesome pro features!

[Learn more, Memberships starting at \\$2.50/m!](#)

**Follow me
on Twitter!**

@ConvertingColor