

Converting Colors

Hex(EBCBC9)

Have a look what the booklet for
Hex(EBCBC9) contains.

Hex(EBCBC9)	3
<i>Conversions</i>	4
<i>Details</i>	6
<i>Harmonies</i>	11
<i>Previews</i>	23
<i>Color Blindness Simulation</i>	26
<i>CSS Examples</i>	29

Color

Hex(EBCBC9)

Conversions

Conversions Part 1

Format	Color
Hex	EBCBC9
RGB	235, 203, 201
RGB Percent	92%, 80%, 79%
CMY	0.0784, 0.2039, 0.2118
CMYK	0.00, 0.14, 0.14, 0.08
HSL	4°, 46%, 85%
HSV	4°, 14%, 92%
XYZ	66.1595, 64.5911, 64.2387
YIQ	212.3400, 19.7140, 6.1620

Conversions

Conversions Part 2

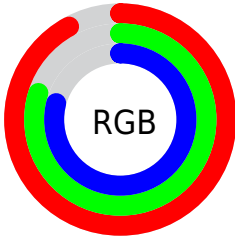
Format	Color
R _Y B	235, 203, 201
Decimal	15453129
CIE Lab	84.27, 10.91, 5.14
CIE LCh	84, 12.061, 25.232
Yxy	64.5911, 0.3393, 0.3313
Android (android.graphics.Color)	4293643209 (0xFFEBCBC9)
YUV	212.3400, -5.5906, 19.8728
Hunter-Lab	80.3686, 6.2964, 8.8675

Details

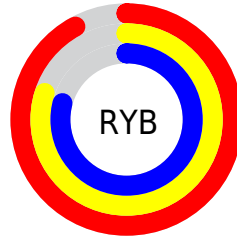
The Hex color **EBCBC9** is a light color, and the websafe version is hex **FFCCCC**. A complement of this color would be **C9E9EB**, and the grayscale version is **D4D4D4**.

A 20% lighter version of the original color is **FFFFFF**, and **B39593** is the 20% darker color. If you saturate the color by 10%, you get **EBB5B2**, and if you desaturate by 10%, it is **EBE1E1**.

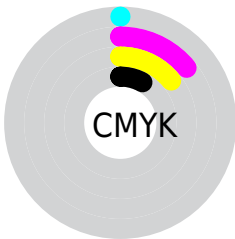
Distribution



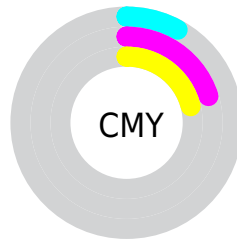
- Red (92%)
- Green (80%)
- Blue (79%)



- Red (92%)
- Yellow (80%)
- Blue (79%)



- Cyan (0%)
- Magenta (14%)
- Yellow (14%)
- Black (8%)



- Cyan (8%)
- Magenta (20%)
- Yellow (21%)

Brightness & Saturation Gradients

These gradients show how the Hex color EBCBC9 changes by changing the brightness by 10 percent. The first figure shows a shift by +10% for each color and the second figure -10%.

Similar to the brightness gradients but the following saturation gradients show a change of the Hex color EBCBC9 by changing the saturation by 10% instead.

 EBCBC9

 EBCBC9

FFFFFF

 CFB0AE

 B39593

 987B79

 7E6261

 644A49

 4C3432

 351E1D

 210704

 000000

 EBCBC9

 EBCBC9

 EBB5B2

 EBE1E1

 EB9F9A

 EBF7F8

 EB8983

 EBFFFF

 EB736B

 EB5C54

 EB463C

 EB3025

 EB1A0D

 EB0E00

Harmonies

Analogous

The Analogous color harmony consists of three colors that are next to each other on the color wheel.



E8CBD4



EBCBC9



E7CDC0

Triad

The Triadic color harmony groups three colors that are evenly spaced from another and form a triangle on the color wheel.



EBCBC9



C4D7C5



C4D4E9

Complementary

The Complementary color scheme is a pair of colors which are on the opposite of each other on the color wheel.



EBCBC9



C9E9EB

Split Complementary

Split-complementary colors differ from the complementary color scheme. The scheme consists of three colors, the original color and two neighbors of the complement color.



BAD7E4



EBCBC9



BAD9D0

Square

The Square scheme is like the rectangle color scheme, but the four colors are evenly spaced on the color wheel.



EBCBC9



D1D4BE



B6D9DB



D2D0E7

Rectangle

The Rectangle color scheme consists of four colors that form a rectangle on the color wheel.



EBCBC9



E1D0BD



B6D9DB



C0D5E8

Sweetspot

The Sweet Spot groups the original color and five complimentary colors.



EBCBC9



FFF5F5



EBC9E9



807A79



000000



808080

Same Dimension

The Same Dimension uses a secret algorithm to generate beautiful new colors.



EBCBC9



FFD6D4



EBDCC9



756A6A



B50B00



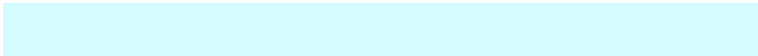
360300

Inverse Universe

The Inverse Universe completely reimagines the original color for something new.



C9E9EB



D4FCFF



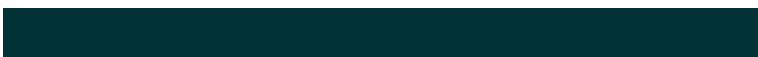
C9D8EB



6A7575



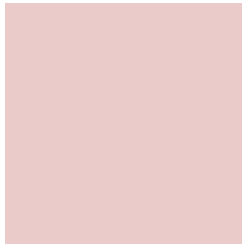
00AAB5



003236

Previews

White Background



This preview shows how the Hex color EBCBC9 looks on a white background.

Color Contrast Check

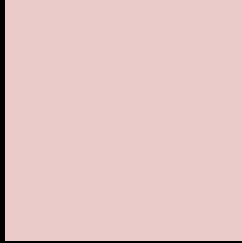
Large Text (above 18pt) WCAG AA × Fail

Any Text WCAG AA × Fail

Large Text (above 18pt) WCAG AAA × Fail

Any Text WCAG AAA × Fail

Black Background



This preview shows how the Hex color EBCBC9 looks on a black background.

Color Contrast Check

Large Text (above 18pt) WCAG AA ✓ Pass

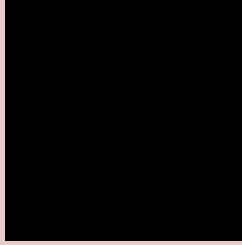
Any Text WCAG AA ✓ Pass

Large Text (above 18pt) WCAG AAA ✓ Pass

Any Text WCAG AAA ✓ Pass

If you want to check with other color combinations, try the [Color Contrast Checker](#).

Hex EBCBC9 Background



This preview shows how black text looks on a background with the Hex color EBCBC9.

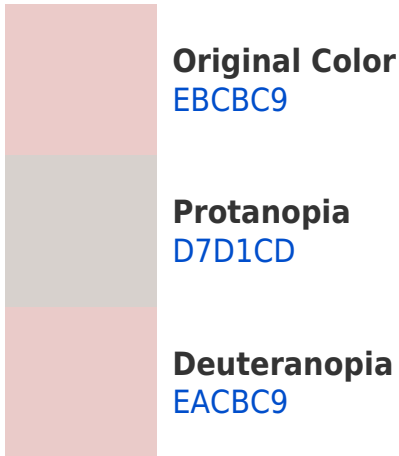


This preview shows how white text looks on a background with the Hex color EBCBC9.

Color Blindness Simulation

Color vision deficiency is a very complex topic, and I could not describe the different causes any better than Wikipedia does, so if you want to learn more, you should check out their [article about color blindness](#).

Dichromacy





Tritanopia
EDC9D8

Trichromacy



Original Color
EBCBC9

Protanomaly
DECFCC

Deuteranomaly
EACBC9

Tritanomaly
ECCAD3

Monochromacy



Original Color
EBCBC9

Achromatopsia
D4D4D4

Achromatomaly
DCD1D0

CSS Examples

Text

The CSS property to change the color of the text to Hex EBCBC9 is called "color". The color property can be set on classes, ids or directly on the HTML element.

This example shows how text in the color #EBCBC9 looks like.

```
.text, #text, p{  
    color:#EBCBC9  
}
```

If you want to add a text shadow in that color use the text-shadow property, you can generate a text shadow directly with our [CSS Text Shadow Generator](#).

Here you see how black text with a 4 pixel #EBCBC9 colored shadow looks like.

```
.shadow{ text-shadow: 4px 4px 2px #EBCBC9
}
```

Border

The CSS property to change the border of an element to Hex EBCBC9 is called "border". The border property can be set on classes, ids or directly on the HTML element.

This example shows the color as border, it can be applied via the CSS property "border" or "border-color".

```
.border, #border, table{ border:4px solid
#EBCBC9 }
```

If only the border color should be changed use the property `border-color`.

```
.border{ border-color:#EBCBC9 }
```

If you want to add a box shadow in that color use:

Here you see how a box with a 4 pixel #EBCBC9 colored shadow looks like.

```
.boxshadow{ -moz-box-shadow:4px 4px 4px  
4px #EBCBC9; -webkit-box-shadow:4px 4px  
4px 4px #EBCBC9; box-shadow:4px 4px 4px  
4px #EBCBC9 }
```

Background

The CSS property to change the background color of an element to Hex EBCBC9 is called "background". The background property can be set on classes, ids or directly on the HTML element.

```
.background, #background, body{  
background:#EBCBC9 }
```

If only the background color should be changed can be used:

```
.background{ background-color:#EBCBC9 }
```

This example shows the color as background, it is applied via the CSS property "background".

To optimize and compress your CSS code, you can use our [online CSS compressor and optimizer](#) based on csstidy. If you want to create a linear or radial gradient as background or border, check our [CSS Gradient Generator](#).

Hey! You found this booklet interesting? Support Converting Colors with the new Membership Option!

The pro membership hides all ads, plus gives you double the colors in the color bucket, and more awesome pro features!

[Learn more, Memberships starting at \\$2.50/m!](#)

**Follow me
on Twitter!**

@ConvertingColor