

# Converting Colors

Hex(EBCCCD)

Have a look what the booklet for  
Hex(EBCCCD) contains.

<b>Hex(EBCCCD)</b> .....	3
<b><i>Conversions</i></b> .....	4
<b><i>Details</i></b> .....	6
<b><i>Harmonies</i></b> .....	11
<b><i>Previews</i></b> .....	23
<b><i>Color Blindness Simulation</i></b> .....	26
<b><i>CSS Examples</i></b> .....	29

# **Color**

**Hex(EBCCCD)**

# Conversions

## Conversions Part 1

Format	Color
Hex	EBCCCD
RGB	235, 204, 205
RGB Percent	92%, 80%, 80%
CMY	0.0784, 0.2000, 0.1961
CMYK	0.00, 0.13, 0.13, 0.08
HSL	358°, 44%, 86%
HSV	358°, 13%, 92%
XYZ	66.8733, 65.2557, 66.8286
YIQ	213.3830, 18.1550, 6.8830

# Conversions

## Conversions Part 2

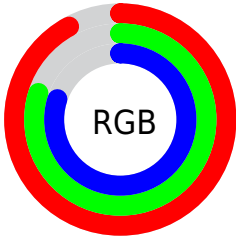
Format	Color
R <sub>Y</sub> B	235, 204, 205
Decimal	15453389
CIE Lab	84.62, 11.02, 3.51
CIE LCh	85, 11.566, 17.656
Yxy	65.2557, 0.3361, 0.3280
Android (android.graphics.Color)	4293643469 (0xFFEBCCCD)
YUV	213.3830, -4.1328, 18.9581
Hunter-Lab	80.7810, 6.4017, 7.4972

# Details

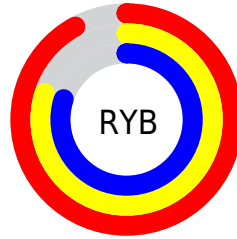
The Hex color **EBCCCD** is a light color, and the websafe version is hex **FFCCCC**. A complement of this color would be **CCEBEA**, and the grayscale version is **D5D5D5**.

A 20% lighter version of the original color is **FFFFFF**, and **B39697** is the 20% darker color. If you saturate the color by 10%, you get **EBB5B6**, and if you desaturate by 10%, it is **EBE4E4**.

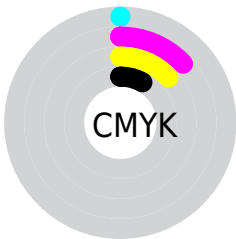
# Distribution



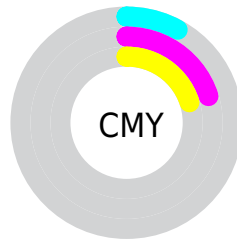
- Red (92%)
- Green (80%)
- Blue (80%)



- Red (92%)
- Yellow (80%)
- Blue (80%)



- Cyan (0%)
- Magenta (13%)
- Yellow (13%)
- Black (8%)



- Cyan (8%)
- Magenta (20%)
- Yellow (20%)

# Brightness & Saturation Gradients

These gradients show how the Hex color EBCCCD changes by changing the brightness by 10 percent. The first figure shows a shift by +10% for each color and the second figure -10%.

Similar to the brightness gradients but the following saturation gradients show a change of the Hex color EBCCCD by changing the saturation by 10% instead.



 EBCCCD

 EBCCCD

FFFFFF

 CFB1B2

 B39697

 987C7D

 7E6364

 654B4C

 4C3436

 351F20

 210809

 000000

 EBCCCD

 EBCCCD

 EBB5B6

 EBE4E4

 EB9DA0

 EBFBFA

 EB8689

 EBFFFF

 EB6E72

 EB575B

 EB3F45

 EB282E

 EB1017

 EB0008

# Harmonies

## Analogous

The Analogous color harmony consists of three colors that are next to each other on the color wheel.



E7CCD8



EBCCD



E9CEC3

# Triad

The Triadic color harmony groups three colors that are evenly spaced from another and form a triangle on the color wheel.



EBCCCD



C9D8C4



C3D6E8

# Complementary

The Complementary color scheme is a pair of colors which are on the opposite of each other on the color wheel.



EBCCCD



CCEBEA

# Split Complementary

Split-complementary colors differ from the complementary color scheme. The scheme consists of three colors, the original color and two neighbors of the complement color.



**BAD8E3**



**EBCCCD**



**BED9CE**

# Square

The Square scheme is like the rectangle color scheme, but the four colors are evenly spaced on the color wheel.



EBCCCD



D5D4BE



B8DAD9



D0D2E8

# Rectangle

The Rectangle color scheme consists of four colors that form a rectangle on the color wheel.



EBCCCD



E4D0BF



B8DAD9



BFD7E7



# Sweetspot

The Sweet Spot groups the original color and five complimentary colors.



EBCCCD



FFF5F5



EACCEB



807979



000000



808080



# Same Dimension

The Same Dimension uses a secret algorithm to generate beautiful new colors.



EBCCCD



FFD6D8



EBDACC



756A6A



B50006



360002



# Inverse Universe

The Inverse Universe completely reimagines the original color for something new.



EBCCCD



FFD6D8



CCDDEB



756A6A



B50006



360002



# Previews

## White Background



This preview shows how the Hex color EBCCCD looks on a white background.

## Color Contrast Check

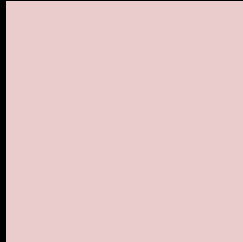
Large Text (above 18pt) WCAG AA × Fail

Any Text WCAG AA × Fail

Large Text (above 18pt) WCAG AAA × Fail

Any Text WCAG AAA × Fail

# Black Background



This preview shows how the Hex color EBCCCD looks on a black background.

## Color Contrast Check

Large Text (above 18pt) WCAG AA ✓ Pass

Any Text WCAG AA ✓ Pass

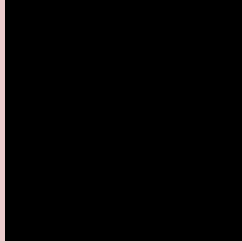
Large Text (above 18pt) WCAG AAA ✓ Pass

Any Text WCAG AAA ✓ Pass

If you want to check with other color combinations, try the [Color Contrast Checker](#).



## Hex EBCCCD Background



This preview shows how black text looks on a background with the Hex color EBCCCD.

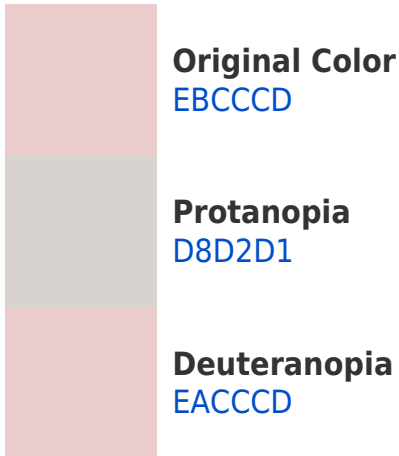


This preview shows how white text looks on a background with the Hex color EBCCCD.

# Color Blindness Simulation

Color vision deficiency is a very complex topic, and I could not describe the different causes any better than Wikipedia does, so if you want to learn more, you should check out their [article about color blindness](#).

## Dichromacy





# Trichromacy



**Original Color**  
EBCCCD

**Protanomaly**  
DFD0D0

**Deuteranomaly**  
EACCCD

**Tritanomaly**  
ECCBD5

# Monochromacy



**Original Color**  
EBCCCD

**Achromatopsia**  
D5D5D5

**Achromatomaly**  
DDD2D2

# CSS Examples

## Text

The CSS property to change the color of the text to Hex EBCCCD is called "color". The color property can be set on classes, ids or directly on the HTML element.

This example shows how text in the color #EBCCCD looks like.

```
.text, #text, p{  
  color:#EBCCCD  
}
```

If you want to add a text shadow in that color use the text-shadow property, you can generate a text shadow directly with our [CSS Text Shadow Generator](#).

Here you see how black text with a 4 pixel #EBCCCD colored shadow looks like.

```
.shadow{ text-shadow: 4px 4px 2px #EBCCCD
}
```

## Border

The CSS property to change the border of an element to Hex EBCCCD is called "border". The border property can be set on classes, ids or directly on the HTML element.

This example shows the color as border, it can be applied via the CSS property "border" or "border-color".

```
.border, #border, table{ border:4px solid
#EBCCCD }
```

If only the border color should be changed use the property `border-color`.

```
.border{ border-color:#EBCCCD }
```

If you want to add a box shadow in that color use:

Here you see how a box with a 4 pixel #EBCCCD colored shadow looks like.

```
.boxshadow{ -moz-box-shadow:4px 4px 4px  
4px #EBCCCD; -webkit-box-shadow:4px 4px  
4px 4px #EBCCCD; box-shadow:4px 4px 4px  
4px #EBCCCD }
```

# Background

The CSS property to change the background color of an element to Hex EBCCCD is called "background". The background property can be set on classes, ids or directly on the HTML element.

```
.background, #background, body{  
background:#EBCCCD }
```

If only the background color should be changed can be used:

```
.background{ background-color:#EBCCCD }
```

This example shows the color as background, it is applied via the CSS property "background".

To optimize and compress your CSS code, you can use our [online CSS compressor and optimizer](#) based on csstidy. If you want to create a linear or radial gradient as background or border, check our [CSS Gradient Generator](#).



Hey! You found this booklet interesting? Support Converting Colors with the new Membership Option!

The pro membership hides all ads, plus gives you double the colors in the color bucket, and more awesome pro features!

**[Learn more, Memberships starting at \\$2.50/m!](#)**

**Follow me  
on Twitter!**

@ConvertingColor