

Converting Colors

Hex(EBCED3)

Have a look what the booklet for
Hex(EBCED3) contains.

Hex(EBCED3)	3
<i>Conversions</i>	4
<i>Details</i>	6
<i>Harmonies</i>	11
<i>Previews</i>	23
<i>Color Blindness Simulation</i>	26
<i>CSS Examples</i>	29

Color

Hex(EBCED3)

Conversions

Conversions Part 1

Format	Color
Hex	EBCED3
RGB	235, 206, 211
RGB Percent	92%, 81%, 83%
CMY	0.0784, 0.1922, 0.1725
CMYK	0.00, 0.12, 0.10, 0.08
HSL	350°, 42%, 86%
HSV	350°, 12%, 92%
XYZ	68.0901, 66.5079, 70.8766
YIQ	215.2410, 15.6790, 7.7030

Conversions

Conversions Part 2

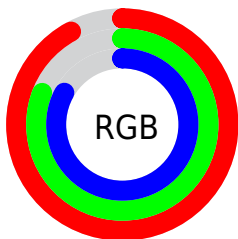
Format	Color
R_{YB}	235, 206, 211
Decimal	15453907
CIE Lab	85.25, 10.95, 1.25
CIE LCh	85, 11.016, 6.493
Yxy	66.5079, 0.3314, 0.3237
Android (android.graphics.Color)	4293643987 (0xFFEBCED3)
YUV	215.2410, -2.0908, 17.3286
Hunter-Lab	81.5524, 6.3174, 5.5582

Details

The Hex color **EBCED3** is a light color, and the websafe version is hex **FFCCCC**. A complement of this color would be **CEEBE6**, and the grayscale version is **D7D7D7**.

A 20% lighter version of the original color is **FFFFFF**, and **B3989D** is the 20% darker color. If you saturate the color by 10%, you get **EBB7C0**, and if you desaturate by 10%, it is **EBE6E6**.

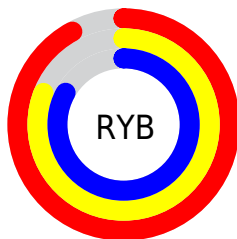
Distribution



Red (92%)

Green (81%)

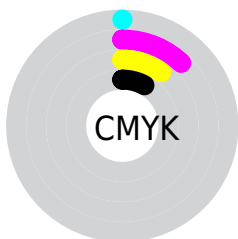
Blue (83%)



Red (92%)

Yellow (81%)

Blue (83%)

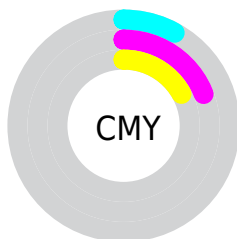


Cyan (0%)

Magenta (12%)

Yellow (10%)

Black (8%)



Cyan (8%)

Magenta (19%)

Yellow (17%)

Brightness & Saturation Gradients

These gradients show how the Hex color EBCED3 changes by changing the brightness by 10 percent. The first figure shows a shift by +10% for each color and the second figure -10%.

Similar to the brightness gradients but the following saturation gradients show a change of the Hex color EBCED3 by changing the saturation by 10% instead.

 EBCED3

FFFFFF

 EBCED3

 CFB2B7

 B3989D

 987E82

 7E6569

 654D51

 4D363A

 352025

 210B10

 000000

 EBCED3

 EBCED3

 EBB7C0

 EBE6E6

 EB9FAC

 EBFDFD

 EB8899

 EBFFFF

 EB7085

 EB5972

 EB415E

 EB2A4B

 EB1237

 EB0029

Harmonies

Analogous

The Analogous color harmony consists of three colors that are next to each other on the color wheel.



E5CFDD



EBCED3



EBCFC9

Triad

The Triadic color harmony groups three colors that are evenly spaced from another and form a triangle on the color wheel.



EBCED3



CFD8C4



C2D8E8

Complementary

The Complementary color scheme is a pair of colors which are on the opposite of each other on the color wheel.



EBCED3



CEEBE6

Split Complementary

Split-complementary colors differ from the complementary color scheme. The scheme consists of three colors, the original color and two neighbors of the complement color.



BCDBE1



EBCED3



C4DACC

Square

The Square scheme is like the rectangle color scheme, but the four colors are evenly spaced on the color wheel.



EBCED3



DBD5C0



BDDBD7



CDD5E9

Rectangle

The Rectangle color scheme consists of four colors that form a rectangle on the color wheel.



EBCED3



E8D1C4



BDDBD7



BFD9E6

Sweetspot

The Sweet Spot groups the original color and five complimentary colors.



EBCED3



FFF5F7



E6CEEB



80797A



000000



808080

Same Dimension

The Same Dimension uses a secret algorithm to generate beautiful new colors.



EBCED3



FFD9DF



EBD7CE



756A6C



B5001F



360009

Inverse Universe

The Inverse Universe completely reimagines the original color for something new.



EBCED3



FFD9DF



CEE2EB



756A6C



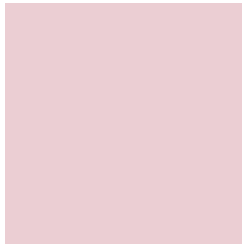
B5001F



360009

Previews

White Background



This preview shows how the Hex color EBCED3 looks on a white background.

Color Contrast Check

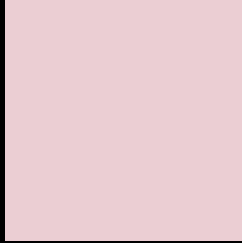
Large Text (above 18pt) WCAG AA × Fail

Any Text WCAG AA × Fail

Large Text (above 18pt) WCAG AAA × Fail

Any Text WCAG AAA × Fail

Black Background



This preview shows how the Hex color EBCED3 looks on a black background.

Color Contrast Check

Large Text (above 18pt) WCAG AA ✓ Pass

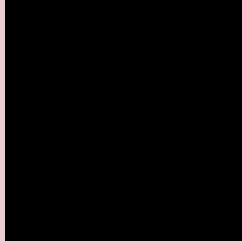
Any Text WCAG AA ✓ Pass

Large Text (above 18pt) WCAG AAA ✓ Pass

Any Text WCAG AAA ✓ Pass

If you want to check with other color combinations, try the [Color Contrast Checker](#).

Hex EBCED3 Background



This preview shows how black text looks on a background with the Hex color EBCED3.

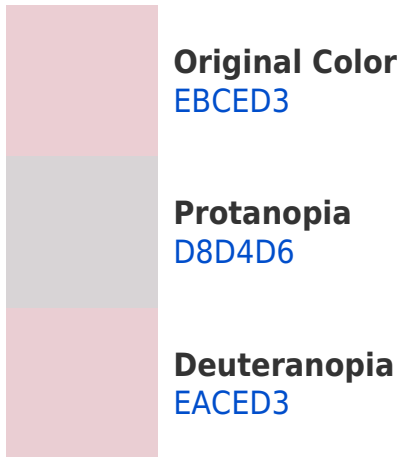


This preview shows how white text looks on a background with the Hex color EBCED3.

Color Blindness Simulation

Color vision deficiency is a very complex topic, and I could not describe the different causes any better than Wikipedia does, so if you want to learn more, you should check out their [article about color blindness](#).

Dichromacy



Trichromacy



Original Color
EBCED3

Protanomaly
DFD2D5

Deuteranomaly
EACED3

Tritanomaly
ECCDD9

Monochromacy



Original Color
EBCED3

Achromatopsia
D7D7D7

Achromatomaly
DED4D6

CSS Examples

Text

The CSS property to change the color of the text to Hex EBCED3 is called "color". The color property can be set on classes, ids or directly on the HTML element.

This example shows how text in the color #EBCED3 looks like.

```
.text, #text, p{  
    color:#EBCED3  
}
```

If you want to add a text shadow in that color use the text-shadow property, you can generate a text shadow directly with our [CSS Text Shadow Generator](#).

Here you see how black text with a 4 pixel #EBCED3 colored shadow looks like.

```
.shadow{ text-shadow: 4px 4px 2px #EBCED3  
}
```

Border

The CSS property to change the border of an element to Hex EBCED3 is called "border". The border property can be set on classes, ids or directly on the HTML element.

This example shows the color as border, it can be applied via the CSS property "border" or "border-color".

```
.border, #border, table{ border:4px solid  
#EBCED3 }
```

If only the border color should be changed use the property `border-color`.

```
.border{ border-color:#EBCED3 }
```

If you want to add a box shadow in that color use:

Here you see how a box with a 4 pixel #EBCED3 colored shadow looks like.

```
.boxshadow{ -moz-box-shadow:4px 4px 4px  
4px #EBCED3; -webkit-box-shadow:4px 4px  
4px 4px #EBCED3; box-shadow:4px 4px 4px  
4px #EBCED3 }
```

Background

The CSS property to change the background color of an element to Hex EBCED3 is called "background". The background property can be set on classes, ids or directly on the HTML element.

```
.background, #background, body{  
background:#EBCED3 }
```

If only the background color should be changed can be used:

```
.background{ background-color:#EBCED3 }
```

This example shows the color as background, it is applied via the CSS property "background".

To optimize and compress your CSS code, you can use our [online CSS compressor and optimizer](#) based on csstidy. If you want to create a linear or radial gradient as background or border, check our [CSS Gradient Generator](#).

Hey! You found this booklet interesting? Support Converting Colors with the new Membership Option!

The pro membership hides all ads, plus gives you double the colors in the color bucket, and more awesome pro features!

[Learn more, Memberships starting at \\$2.50/m!](#)

**Follow me
on Twitter!**

@ConvertingColor