

Converting Colors

Hex(EBD0D8)

Have a look what the booklet for
Hex(EBD0D8) contains.

Hex(EBD0D8)	3
<i>Conversions</i>	4
<i>Details</i>	6
<i>Harmonies</i>	11
<i>Previews</i>	23
<i>Color Blindness Simulation</i>	26
<i>CSS Examples</i>	29

Color

Hex(EBD0D8)

Conversions

Conversions Part 1

Format	Color
Hex	EBD0D8
RGB	235, 208, 216
RGB Percent	92%, 82%, 85%
CMY	0.0784, 0.1843, 0.1529
CMYK	0.00, 0.11, 0.08, 0.08
HSL	342°, 40%, 87%
HSV	342°, 11%, 92%
XYZ	69.2115, 67.7318, 74.3914
YIQ	216.9850, 13.5240, 8.2120

Conversions

Conversions Part 2

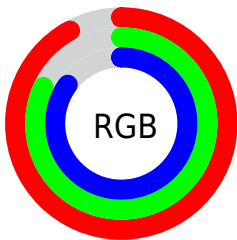
Format	Color
R _Y B	235, 208, 216
Decimal	15454424
CIE Lab	85.87, 10.73, -0.51
CIE LCh	86, 10.740, 357.283
Yxy	67.7318, 0.3275, 0.3205
Android (android.graphics.Color)	4293644504 (0xFFEBD0D8)
YUV	216.9850, -0.4856, 15.7992
Hunter-Lab	82.2993, 6.0898, 4.0165

Details

The Hex color **EBD0D8** is a light color, and the websafe version is hex **FFCCCC**. A complement of this color would be **D0EBE3**, and the grayscale version is **D9D9D9**.

A 20% lighter version of the original color is **FFFFFF**, and **B39AA1** is the 20% darker color. If you saturate the color by 10%, you get **EBB9C7**, and if you desaturate by 10%, it is **EBE8E9**.

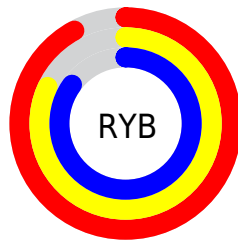
Distribution



Red (92%)

Green (82%)

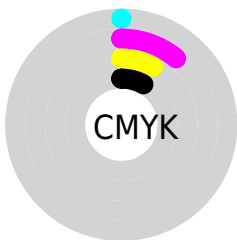
Blue (85%)



Red (92%)

Yellow (82%)

Blue (85%)

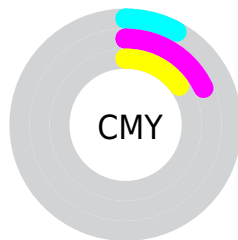


Cyan (0%)

Magenta (11%)

Yellow (8%)

Black (8%)



Cyan (8%)

Magenta (18%)

Yellow (15%)

Brightness & Saturation Gradients

These gradients show how the Hex color EBD0D8 changes by changing the brightness by 10 percent. The first figure shows a shift by +10% for each color and the second figure -10%.

Similar to the brightness gradients but the following saturation gradients show a change of the Hex color EBD0D8 by changing the saturation by 10% instead.

EBD0D8

EBD0D8

FFFFFF

CFB4BC

B39AA1

988087

7E676E

654E55

4D383E

362228

210D14

000000

 EBD0D8

 EBD0D8

 EBB9C7

 EBE8E9

 EBA1B7

 EBFFF9

 EB8AA6

 EBFFFF

 EB7296

 EB5B85

 EB4375

 EB2C64

 EB1454

 EB0046

Harmonies

Analogous

The Analogous color harmony consists of three colors that are next to each other on the color wheel.



E3D2E2



EBD0D8



EDD0CE

Triad

The Triadic color harmony groups three colors that are evenly spaced from another and form a triangle on the color wheel.



EBD0D8



D5D9C5



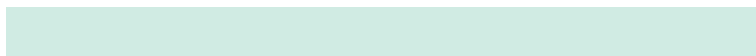
C1DBE7

Complementary

The Complementary color scheme is a pair of colors which are on the opposite of each other on the color wheel.



EBD0D8



DOEBE3

Split Complementary

Split-complementary colors differ from the complementary color scheme. The scheme consists of three colors, the original color and two neighbors of the complement color.



BEDDE0



EBD0D8



C9DCCB

Square

The Square scheme is like the rectangle color scheme, but the four colors are evenly spaced on the color wheel.



EBD0D8



E0D6C3



C1DDD5



CBD8EB

Rectangle

The Rectangle color scheme consists of four colors that form a rectangle on the color wheel.



EBD0D8



EBD2C8



C1DDD5



BFDCE5

Sweetspot

The Sweet Spot groups the original color and five complimentary colors.



EBD0D8



FFF7FA



E3D0EB



807A7C



000000



808080

Same Dimension

The Same Dimension uses a secret algorithm to generate beautiful new colors.



EBD0D8



FFDBE6



EBD5D0



756A6D



B50036



360010

Inverse Universe

The Inverse Universe completely reimagines the original color for something new.



EBD0D8



FFDBE6



D0E6EB



756A6D



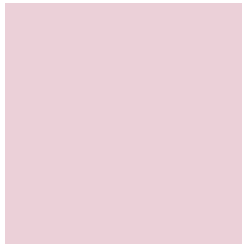
B50036



360010

Previews

White Background



This preview shows how the Hex color EBD0D8 looks on a white background.

Color Contrast Check

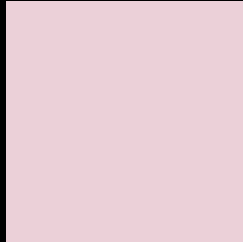
Large Text (above 18pt) WCAG AA × Fail

Any Text WCAG AA × Fail

Large Text (above 18pt) WCAG AAA × Fail

Any Text WCAG AAA × Fail

Black Background



This preview shows how the Hex color EBD0D8 looks on a black background.

Color Contrast Check

Large Text (above 18pt) WCAG AA ✓ Pass

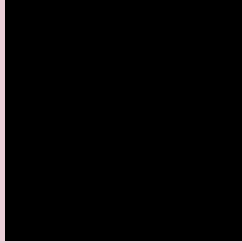
Any Text WCAG AA ✓ Pass

Large Text (above 18pt) WCAG AAA ✓ Pass

Any Text WCAG AAA ✓ Pass

If you want to check with other color combinations, try the [Color Contrast Checker](#).

Hex EBD0D8 Background



This preview shows how black text looks on a background with the Hex color EBD0D8.



This preview shows how white text looks on a background with the Hex color EBD0D8.

Color Blindness Simulation

Color vision deficiency is a very complex topic, and I could not describe the different causes any better than Wikipedia does, so if you want to learn more, you should check out their [article about color blindness](#).

Dichromacy



Original Color
EBD0D8

Protanopia
D9D6DB

Deuteranopia
EBD0D8

Trichromacy



Original Color
EBD0D8

Protanomaly
E0D4DA

Deuteranomaly
EBD0D8

Tritanomaly
ECCFDC

Monochromacy



Original Color
EBD0D8

Achromatopsia
D9D9D9

Achromatomaly
E0D6D9

CSS Examples

Text

The CSS property to change the color of the text to Hex EBD0D8 is called "color". The color property can be set on classes, ids or directly on the HTML element.

This example shows how text in the color #EBD0D8 looks like.

```
.text, #text, p{  
    color:#EBD0D8  
}
```

If you want to add a text shadow in that color use the text-shadow property, you can generate a text shadow directly with our [CSS Text Shadow Generator](#).

Here you see how black text with a 4 pixel #EBD0D8 colored shadow looks like.

```
.shadow{ text-shadow: 4px 4px 2px #EBD0D8
}
```

Border

The CSS property to change the border of an element to Hex EBD0D8 is called "border". The border property can be set on classes, ids or directly on the HTML element.

This example shows the color as border, it can be applied via the CSS property "border" or "border-color".

```
.border, #border, table{ border:4px solid
#EBD0D8 }
```

If only the border color should be changed use the property `border-color`.

```
.border{ border-color:#EBD0D8 }
```

If you want to add a box shadow in that color use:

Here you see how a box with a 4 pixel #EBD0D8 colored shadow looks like.

```
.boxshadow{ -moz-box-shadow:4px 4px 4px  
4px #EBD0D8; -webkit-box-shadow:4px 4px  
4px 4px #EBD0D8; box-shadow:4px 4px 4px  
4px #EBD0D8 }
```

Background

The CSS property to change the background color of an element to Hex EBD0D8 is called "background". The background property can be set on classes, ids or directly on the HTML element.

```
.background, #background, body{  
background:#EBD0D8 }
```

If only the background color should be changed can be used:

```
.background{ background-color:#EBD0D8 }
```

This example shows the color as background, it is applied via the CSS property "background".

To optimize and compress your CSS code, you can use our [online CSS compressor and optimizer](#) based on csstidy. If you want to create a linear or radial gradient as background or border, check our [CSS Gradient Generator](#).

Hey! You found this booklet interesting? Support Converting Colors with the new Membership Option!

The pro membership hides all ads, plus gives you double the colors in the color bucket, and more awesome pro features!

[Learn more, Memberships starting at \\$2.50/m!](#)

**Follow me
on Twitter!**

@ConvertingColor