

Converting Colors

Hex(EBD2C9)

Have a look what the booklet for
Hex(EBD2C9) contains.

Hex(EBD2C9)	3
<i>Conversions</i>	4
<i>Details</i>	6
<i>Harmonies</i>	11
<i>Previews</i>	23
<i>Color Blindness Simulation</i>	26
<i>CSS Examples</i>	29

Color

Hex(EBD2C9)

Conversions

Conversions Part 1

Format	Color
Hex	EBD2C9
RGB	235, 210, 201
RGB Percent	92%, 82%, 79%
CMY	0.0784, 0.1765, 0.2118
CMYK	0.00, 0.11, 0.14, 0.08
HSL	16°, 46%, 85%
HSV	16°, 14%, 92%
XYZ	67.8502, 67.9724, 64.8022
YIQ	216.4490, 17.7890, 2.5010

Conversions

Conversions Part 2

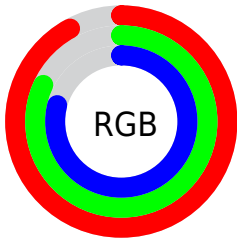
Format	Color
R _Y B	235, 213, 201
Decimal	15454921
CIE Lab	85.99, 7.24, 7.62
CIE LCh	86, 10.509, 46.461
Yxy	67.9724, 0.3382, 0.3388
Android (android.graphics.Color)	4293645001 (0xFFEBD2C9)
YUV	216.4490, -7.6164, 16.2692
Hunter-Lab	82.4454, 2.6209, 11.1097

Details

The Hex color **EBD2C9** is a light color, and the websafe version is hex **FFCCCC**. A complement of this color would be **C9E2EB**, and the grayscale version is **D9D9D9**.

A 20% lighter version of the original color is **FFFFFF**, and **B39C93** is the 20% darker color. If you saturate the color by 10%, you get **EBC1B2**, and if you desaturate by 10%, it is **EBE3E1**.

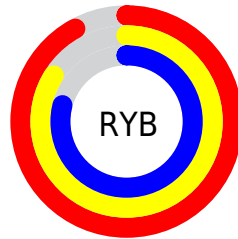
Distribution



Red (92%)

Green (82%)

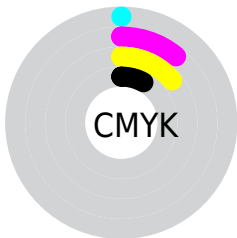
Blue (79%)



Red (92%)

Yellow (84%)

Blue (79%)

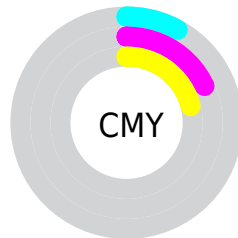


Cyan (0%)

Magenta (11%)

Yellow (14%)

Black (8%)



Cyan (8%)

Magenta (18%)

Yellow (21%)

Brightness & Saturation Gradients

These gradients show how the Hex color EBD2C9 changes by changing the brightness by 10 percent. The first figure shows a shift by +10% for each color and the second figure -10%.

Similar to the brightness gradients but the following saturation gradients show a change of the Hex color EBD2C9 by changing the saturation by 10% instead.

 EBD2C9

 EBD2C9

FFFFFF

 CFB6AE

 B39C93

 988279

 7E6861

 655049

 4C3932

 35241D

 210F04

 000000

 EBD2C9

 EBD2C9

 EBC1B2

 EBE3E1

 EBAF9A

 EBF5F8

 EB9E83

 EBFFFF

 EB8D6B

 EB7C54

 EB6A3C

 EB5925

 EB480D

 EB3E00

Harmonies

Analogous

The Analogous color harmony consists of three colors that are next to each other on the color wheel.



EDD1D2



EBD2C9



E4D5C4

Triad

The Triadic color harmony groups three colors that are evenly spaced from another and form a triangle on the color wheel.



EBD2C9



C4DDD2



D4D6EA

Complementary

The Complementary color scheme is a pair of colors which are on the opposite of each other on the color wheel.



EBD2C9



C9E2EB

Split Complementary

Split-complementary colors differ from the complementary color scheme. The scheme consists of three colors, the original color and two neighbors of the complement color.



C8D9EA



EBD2C9



BFDDDC

Square

The Square scheme is like the rectangle color scheme, but the four colors are evenly spaced on the color wheel.



EBD2C9



CEDBC9



C0DCE5



E0D3E5

Rectangle

The Rectangle color scheme consists of four colors that form a rectangle on the color wheel.



EBD2C9



DDD7C3



C0DCE5



CFD7EB

Sweetspot

The Sweet Spot groups the original color and five complimentary colors.



EBD2C9



FFF8F5



EBC9E3



807B79



000000



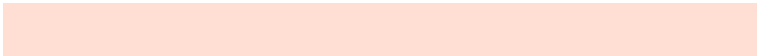
808080

Same Dimension

The Same Dimension uses a secret algorithm to generate beautiful new colors.



EBD2C9



FFDFD4



EBE3C9



756D6A



B53000



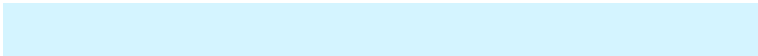
360E00

Inverse Universe

The Inverse Universe completely reimagines the original color for something new.



C9E2EB



D4F4FF



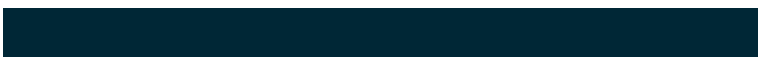
C9D2EB



6A7275



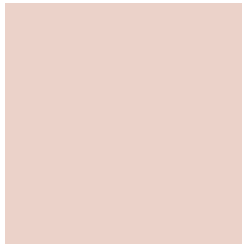
0085B5



002736

Previews

White Background



This preview shows how the Hex color EBD2C9 looks on a white background.

Color Contrast Check

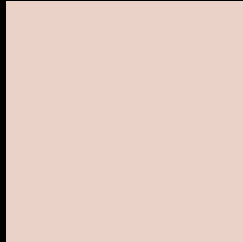
Large Text (above 18pt) WCAG AA × Fail

Any Text WCAG AA × Fail

Large Text (above 18pt) WCAG AAA × Fail

Any Text WCAG AAA × Fail

Black Background



This preview shows how the Hex color EBD2C9 looks on a black background.

Color Contrast Check

Large Text (above 18pt) WCAG AA ✓ Pass

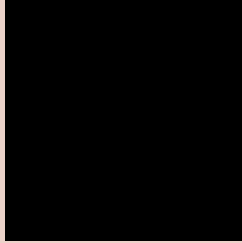
Any Text WCAG AA ✓ Pass

Large Text (above 18pt) WCAG AAA ✓ Pass

Any Text WCAG AAA ✓ Pass

If you want to check with other color combinations, try the [Color Contrast Checker](#).

Hex EBD2C9 Background



This preview shows how black text looks on a background with the Hex color EBD2C9.

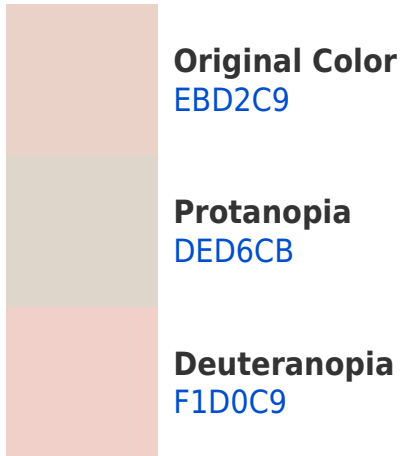


This preview shows how white text looks on a background with the Hex color EBD2C9.

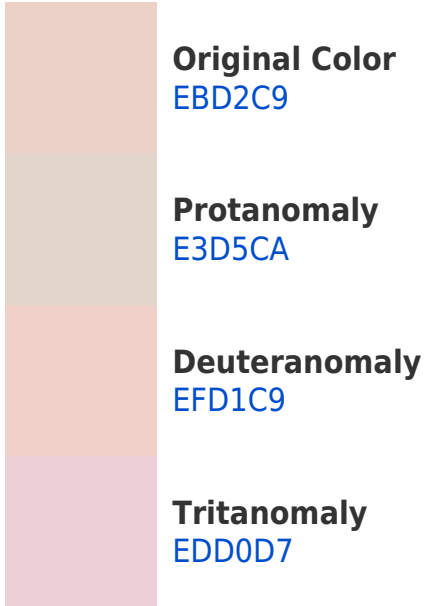
Color Blindness Simulation

Color vision deficiency is a very complex topic, and I could not describe the different causes any better than Wikipedia does, so if you want to learn more, you should check out their [article about color blindness](#).

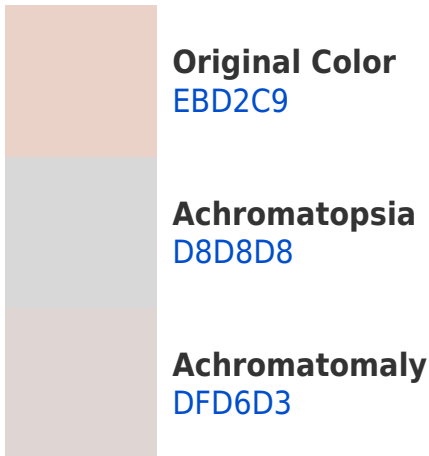
Dichromacy



Trichromacy



Monochromacy



CSS Examples

Text

The CSS property to change the color of the text to Hex EBD2C9 is called "color". The color property can be set on classes, ids or directly on the HTML element.

This example shows how text in the color #EBD2C9 looks like.

```
.text, #text, p{  
    color:#EBD2C9  
}
```

If you want to add a text shadow in that color use the text-shadow property, you can generate a text shadow directly with our [CSS Text Shadow Generator](#).

Here you see how black text with a 4 pixel #EBD2C9 colored shadow looks like.

```
.shadow{ text-shadow: 4px 4px 2px #EBD2C9
}
```

Border

The CSS property to change the border of an element to Hex EBD2C9 is called "border". The border property can be set on classes, ids or directly on the HTML element.

This example shows the color as border, it can be applied via the CSS property "border" or "border-color".

```
.border, #border, table{ border:4px solid
#EBD2C9 }
```

If only the border color should be changed use the property `border-color`.

```
.border{ border-color:#EBD2C9 }
```

If you want to add a box shadow in that color use:

Here you see how a box with a 4 pixel #EBD2C9 colored shadow looks like.

```
.boxshadow{ -moz-box-shadow:4px 4px 4px  
4px #EBD2C9; -webkit-box-shadow:4px 4px  
4px 4px #EBD2C9; box-shadow:4px 4px 4px  
4px #EBD2C9 }
```

Background

The CSS property to change the background color of an element to Hex EBD2C9 is called "background". The background property can be set on classes, ids or directly on the HTML element.

```
.background, #background, body{  
background:#EBD2C9 }
```

If only the background color should be changed can be used:

```
.background{ background-color:#EBD2C9 }
```

This example shows the color as background, it is applied via the CSS property "background".

To optimize and compress your CSS code, you can use our [online CSS compressor and optimizer](#) based on csstidy. If you want to create a linear or radial gradient as background or border, check our [CSS Gradient Generator](#).

Hey! You found this booklet interesting? Support Converting Colors with the new Membership Option!

The pro membership hides all ads, plus gives you double the colors in the color bucket, and more awesome pro features!

[Learn more, Memberships starting at \\$2.50/m!](#)

**Follow me
on Twitter!**

@ConvertingColor