

Converting Colors

Hex(EBD3D4)

Have a look what the booklet for
Hex(EBD3D4) contains.

Hex(EBD3D4)	3
<i>Conversions</i>	4
<i>Details</i>	6
<i>Harmonies</i>	11
<i>Previews</i>	23
<i>Color Blindness Simulation</i>	26
<i>CSS Examples</i>	29

Color

Hex(EBD3D4)

Conversions

Conversions Part 1

Format	Color
Hex	EBD3D4
RGB	235, 211, 212
RGB Percent	92%, 83%, 83%
CMY	0.0784, 0.1725, 0.1686
CMYK	0.00, 0.10, 0.10, 0.08
HSL	357°, 37%, 87%
HSV	357°, 10%, 92%
XYZ	69.4389, 69.0042, 71.9467
YIQ	218.2900, 13.9830, 5.3990

Conversions

Conversions Part 2

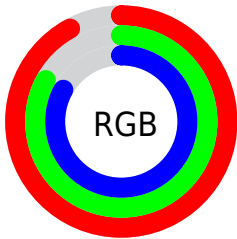
Format	Color
R _Y B	235, 211, 212
Decimal	15455188
CIE Lab	86.51, 8.49, 2.54
CIE LCh	87, 8.858, 16.632
Yxy	69.0042, 0.3300, 0.3280
Android (android.graphics.Color)	4293645268 (0xFFEBD3D4)
YUV	218.2900, -3.1010, 14.6547
Hunter-Lab	83.0687, 3.8415, 6.7965

Details

The Hex color **EBD3D4** is a light color, and the websafe version is hex **CCCCCC**. A complement of this color would be **D3EBEA**, and the grayscale version is **DADADA**.

A 20% lighter version of the original color is **FFFFFF**, and **B39C9D** is the 20% darker color. If you saturate the color by 10%, you get **EBBBBD**, and if you desaturate by 10%, it is **EBEAEB**.

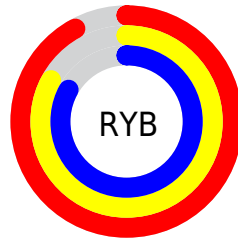
Distribution



Red (92%)

Green (83%)

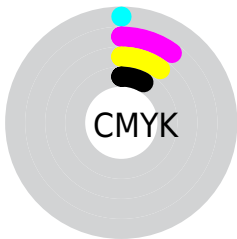
Blue (83%)



Red (92%)

Yellow (83%)

Blue (83%)

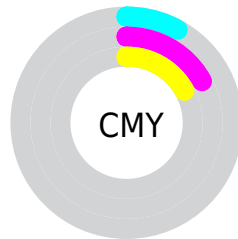


Cyan (0%)

Magenta (10%)

Yellow (10%)

Black (8%)



Cyan (8%)

Magenta (17%)

Yellow (17%)

Brightness & Saturation Gradients

These gradients show how the Hex color EBD3D4 changes by changing the brightness by 10 percent. The first figure shows a shift by +10% for each color and the second figure -10%.

Similar to the brightness gradients but the following saturation gradients show a change of the Hex color EBD3D4 by changing the saturation by 10% instead.

 EBD3D4

FFFFFF

 EBD3D4

 CFB7B8

 B39C9D

 988283

 7E696A

 655152

 4D3A3B

 362426

 211011

 000000

 EBD3D4

 EBD3D4

 EBBBBD

 EBFAEB

 EBA4A7

 EBFFFF

 EB8D90

 EB757A

 EB5E63

 EB464D

 EB2F36

 EB1720

 EB000A

Harmonies

Analogous

The Analogous color harmony consists of three colors that are next to each other on the color wheel.



E8D3DD



EBD3D4



E9D4CD

Triad

The Triadic color harmony groups three colors that are evenly spaced from another and form a triangle on the color wheel.



EBD3D4



D1DCCD



CCDAE9

Complementary

The Complementary color scheme is a pair of colors which are on the opposite of each other on the color wheel.



EBD3D4



D3E8EA

Split Complementary

Split-complementary colors differ from the complementary color scheme. The scheme consists of three colors, the original color and two neighbors of the complement color.



C5DDE4



EBD3D4



C9DDD4

Square

The Square scheme is like the rectangle color scheme, but the four colors are evenly spaced on the color wheel.



EBD3D4



DBD9C8



C4DEDD



D6D8E8

Rectangle

The Rectangle color scheme consists of four colors that form a rectangle on the color wheel.



EBD3D4



E6D6C9



C4DEDD



C9DBE8

Sweetspot

The Sweet Spot groups the original color and five complimentary colors.



EBD3D4



FFF7F8



EAD3EB



807A7B



000000



808080

Same Dimension

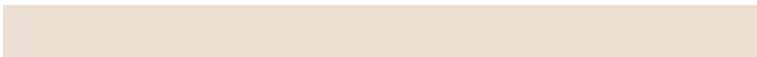
The Same Dimension uses a secret algorithm to generate beautiful new colors.



EBD3D4



FFE0E2



EBDED3



756A6A



B50008



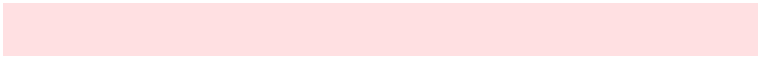
360002

Inverse Universe

The Inverse Universe completely reimagines the original color for something new.



EBD3D4



FFE0E2



D3E0EB



756A6A



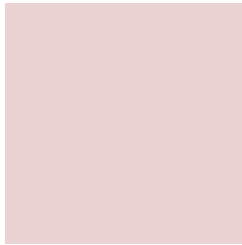
B50008



360002

Previews

White Background



This preview shows how the Hex color EBD3D4 looks on a white background.

Color Contrast Check

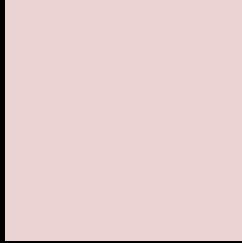
Large Text (above 18pt) WCAG AA × Fail

Any Text WCAG AA × Fail

Large Text (above 18pt) WCAG AAA × Fail

Any Text WCAG AAA × Fail

Black Background



This preview shows how the Hex color EBD3D4 looks on a black background.

Color Contrast Check

Large Text (above 18pt) WCAG AA ✓ Pass

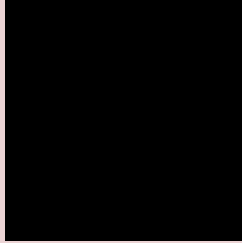
Any Text WCAG AA ✓ Pass

Large Text (above 18pt) WCAG AAA ✓ Pass

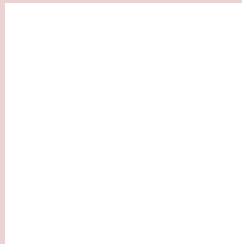
Any Text WCAG AAA ✓ Pass

If you want to check with other color combinations, try the [Color Contrast Checker](#).

Hex EBD3D4 Background



This preview shows how black text looks on a background with the Hex color EBD3D4.

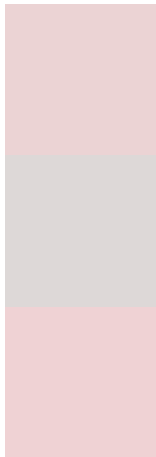


This preview shows how white text looks on a background with the Hex color EBD3D4.

Color Blindness Simulation

Color vision deficiency is a very complex topic, and I could not describe the different causes any better than Wikipedia does, so if you want to learn more, you should check out their [article about color blindness](#).

Dichromacy



Original Color
EBD3D4

Protanopia
DDD8D7

Deuteranopia
EFD2D4



Tritanopia
EDD1E1

Trichromacy



Original Color
EBD3D4

Protanomaly
E2D6D6

Deuteranomaly
EED2D4

Tritanomaly
ECD2DC

Monochromacy



Original Color
EBD3D4

Achromatopsia
DADADA

Achromatomaly
E0D7D8

CSS Examples

Text

The CSS property to change the color of the text to Hex EBD3D4 is called "color". The color property can be set on classes, ids or directly on the HTML element.

This example shows how text in the color #EBD3D4 looks like.

```
.text, #text, p{  
    color:#EBD3D4  
}
```

If you want to add a text shadow in that color use the text-shadow property, you can generate a text shadow directly with our [CSS Text Shadow Generator](#).

Here you see how black text with a 4 pixel #EBD3D4 colored shadow looks like.

```
.shadow{ text-shadow: 4px 4px 2px #EBD3D4
}
```

Border

The CSS property to change the border of an element to Hex EBD3D4 is called "border". The border property can be set on classes, ids or directly on the HTML element.

This example shows the color as border, it can be applied via the CSS property "border" or "border-color".

```
.border, #border, table{ border:4px solid
#EBD3D4 }
```

If only the border color should be changed use the property `border-color`.

```
.border{ border-color:#EBD3D4 }
```

If you want to add a box shadow in that color use:

Here you see how a box with a 4 pixel #EBD3D4 colored shadow looks like.

```
.boxshadow{ -moz-box-shadow:4px 4px 4px  
4px #EBD3D4; -webkit-box-shadow:4px 4px  
4px 4px #EBD3D4; box-shadow:4px 4px 4px  
4px #EBD3D4 }
```

Background

The CSS property to change the background color of an element to Hex EBD3D4 is called "background". The background property can be set on classes, ids or directly on the HTML element.

```
.background, #background, body{  
background:#EBD3D4 }
```

If only the background color should be changed can be used:

```
.background{ background-color:#EBD3D4 }
```

This example shows the color as background, it is applied via the CSS property "background".

To optimize and compress your CSS code, you can use our [online CSS compressor and optimizer](#) based on csstidy. If you want to create a linear or radial gradient as background or border, check our [CSS Gradient Generator](#).

Hey! You found this booklet interesting? Support Converting Colors with the new Membership Option!

The pro membership hides all ads, plus gives you double the colors in the color bucket, and more awesome pro features!

[Learn more, Memberships starting at \\$2.50/m!](#)

**Follow me
on Twitter!**

@ConvertingColor