

Converting Colors

Hex(EBD5CC)

Have a look what the booklet for
Hex(EBD5CC) contains.

Hex(EBD5CC)	3
<i>Conversions</i>	4
<i>Details</i>	6
<i>Harmonies</i>	11
<i>Previews</i>	23
<i>Color Blindness Simulation</i>	26
<i>CSS Examples</i>	29

Color

Hex(EBD5CC)

Conversions

Conversions Part 1

Format	Color
Hex	EBD5CC
RGB	235, 213, 204
RGB Percent	92%, 84%, 80%
CMY	0.0784, 0.1647, 0.2000
CMYK	0.00, 0.09, 0.13, 0.08
HSL	17°, 44%, 86%
HSV	17°, 13%, 92%
XYZ	68.9543, 69.6103, 66.9286
YIQ	218.5520, 16.0010, 1.8650

Conversions

Conversions Part 2

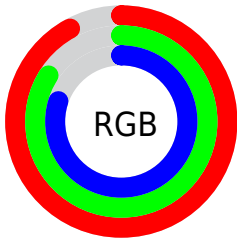
Format	Color
R _Y B	235, 217, 204
Decimal	15455692
CIE Lab	86.81, 6.15, 7.20
CIE LCh	87, 9.466, 49.507
Yxy	69.6103, 0.3356, 0.3387
Android (android.graphics.Color)	4293645772 (0xFFEBD5CC)
YUV	218.5520, -7.1741, 14.4249
Hunter-Lab	83.4328, 1.5166, 10.8414

Details

The Hex color **EBD5CC** is a light color, and the websafe version is hex **CCCCCC**. A complement of this color would be **CCE2EB**, and the grayscale version is **DBDBDB**.

A 20% lighter version of the original color is **FFFFFF**, and **B39E96** is the 20% darker color. If you saturate the color by 10%, you get **EBC4B5**, and if you desaturate by 10%, it is **EBE6E4**.

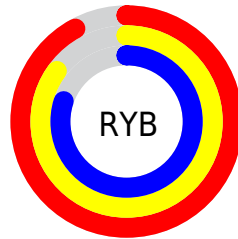
Distribution



Red (92%)

Green (84%)

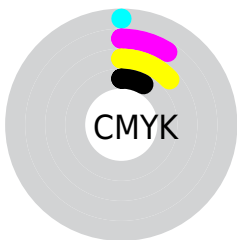
Blue (80%)



Red (92%)

Yellow (85%)

Blue (80%)

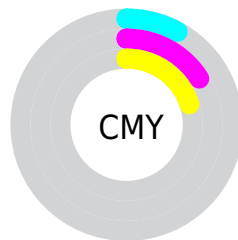


Cyan (0%)

Magenta (9%)

Yellow (13%)

Black (8%)



Cyan (8%)

Magenta (16%)

Yellow (20%)

Brightness & Saturation Gradients

These gradients show how the Hex color EBD5CC changes by changing the brightness by 10 percent. The first figure shows a shift by +10% for each color and the second figure -10%.

Similar to the brightness gradients but the following saturation gradients show a change of the Hex color EBD5CC by changing the saturation by 10% instead.

 EBD5CC

 EBD5CC

FFFFFF

 CFB9B1

 B39E96


 98847C

 7E6B63

 65534B

 4D3C35

 35261F

 211208

 000000

 EBD5CC

 EBD5CC

 EBC4B5

 EBE6E4

 EBB49D

 EBF6FB

 EBA386

 EBFFFF

 EB926E

 EB8257

 EB713F

 EB6028

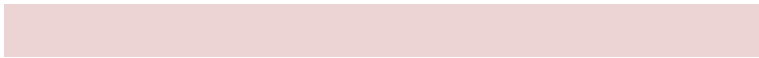
 EB5010

 EB4400

Harmonies

Analogous

The Analogous color harmony consists of three colors that are next to each other on the color wheel.



EDD4D4



EBD5CC



E4D8C8

Triad

The Triadic color harmony groups three colors that are evenly spaced from another and form a triangle on the color wheel.



EBD5CC



C8DFD6



D7D8EA

Complementary

The Complementary color scheme is a pair of colors which are on the opposite of each other on the color wheel.



EBD5CC



CCE2EB

Split Complementary

Split-complementary colors differ from the complementary color scheme. The scheme consists of three colors, the original color and two neighbors of the complement color.



CDDBEB



EBD5CC



C3DFDF

Square

The Square scheme is like the rectangle color scheme, but the four colors are evenly spaced on the color wheel.



EBD5CC



D0DDCD



C5DDE7



E2D5E5

Rectangle

The Rectangle color scheme consists of four colors that form a rectangle on the color wheel.



EBD5CC



DEDAC8



C5DDE7



D4D9EB

Sweetspot

The Sweet Spot groups the original color and five complimentary colors.



EBD5CC



FFF8F5



EBCCE2



807B79



000000



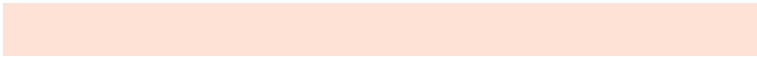
808080

Same Dimension

The Same Dimension uses a secret algorithm to generate beautiful new colors.



EBD5CC



FFE2D6



EBE4CC



756D6A



B53500



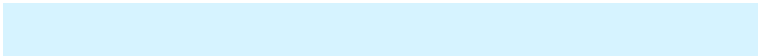
361000

Inverse Universe

The Inverse Universe completely reimagines the original color for something new.



CCE2EB



D6F3FF



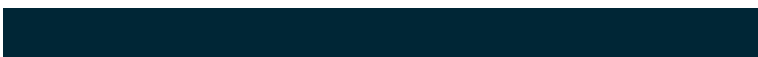
CCD3EB



6A7275



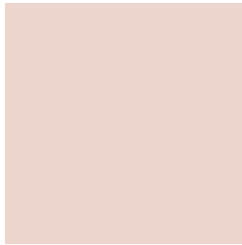
0080B5



002636

Previews

White Background



This preview shows how the Hex color EBD5CC looks on a white background.

Color Contrast Check

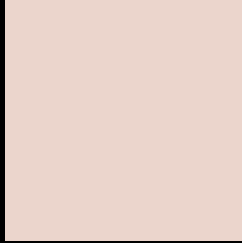
Large Text (above 18pt) WCAG AA × Fail

Any Text WCAG AA × Fail

Large Text (above 18pt) WCAG AAA × Fail

Any Text WCAG AAA × Fail

Black Background



This preview shows how the Hex color EBD5CC looks on a black background.

Color Contrast Check

Large Text (above 18pt) WCAG AA ✓ Pass

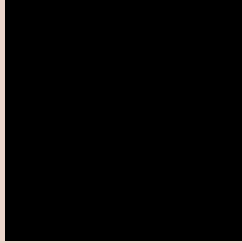
Any Text WCAG AA ✓ Pass

Large Text (above 18pt) WCAG AAA ✓ Pass

Any Text WCAG AAA ✓ Pass

If you want to check with other color combinations, try the [Color Contrast Checker](#).

Hex EBD5CC Background



This preview shows how black text looks on a background with the Hex color EBD5CC.

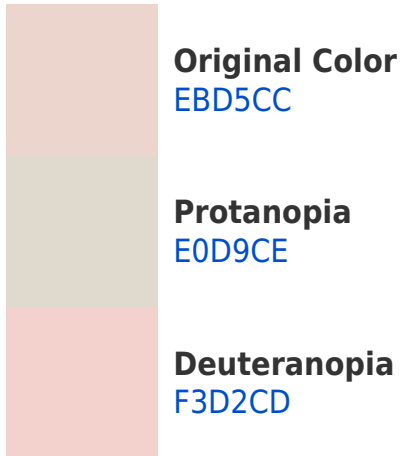


This preview shows how white text looks on a background with the Hex color EBD5CC.

Color Blindness Simulation

Color vision deficiency is a very complex topic, and I could not describe the different causes any better than Wikipedia does, so if you want to learn more, you should check out their [article about color blindness](#).

Dichromacy





Tritanopia
EED2E2

Trichromacy



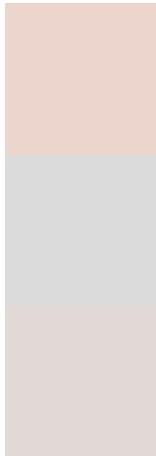
Original Color
EBD5CC

Protanomaly
E4D8CD

Deuteranomaly
F0D3CD

Tritanomaly
EED3DA

Monochromacy



Original Color
EBD5CC

Achromatopsia
DBDBDB

Achromatomaly
E1D9D6

CSS Examples

Text

The CSS property to change the color of the text to Hex EBD5CC is called "color". The color property can be set on classes, ids or directly on the HTML element.

This example shows how text in the color #EBD5CC looks like.

```
.text, #text, p{  
    color:#EBD5CC  
}
```

If you want to add a text shadow in that color use the text-shadow property, you can generate a text shadow directly with our [CSS Text Shadow Generator](#).

Here you see how black text with a 4 pixel #EBD5CC colored shadow looks like.

```
.shadow{ text-shadow: 4px 4px 2px #EBD5CC }  
}
```

Border

The CSS property to change the border of an element to Hex EBD5CC is called "border". The border property can be set on classes, ids or directly on the HTML element.

This example shows the color as border, it can be applied via the CSS property "border" or "border-color".

```
.border, #border, table{ border:4px solid #EBD5CC }  
}
```

If only the border color should be changed use the property `border-color`.

```
.border{ border-color:#EBD5CC }
```

If you want to add a box shadow in that color use:

Here you see how a box with a 4 pixel #EBD5CC colored shadow looks like.

```
.boxshadow{ -moz-box-shadow:4px 4px 4px  
4px #EBD5CC; -webkit-box-shadow:4px 4px  
4px 4px #EBD5CC; box-shadow:4px 4px 4px  
4px #EBD5CC }
```

Background

The CSS property to change the background color of an element to Hex EBD5CC is called "background". The background property can be set on classes, ids or directly on the HTML element.

```
.background, #background, body{  
background:#EBD5CC }
```

If only the background color should be changed can be used:

```
.background{ background-color:#EBD5CC }
```

This example shows the color as background, it is applied via the CSS property "background".

To optimize and compress your CSS code, you can use our [online CSS compressor and optimizer](#) based on csstidy. If you want to create a linear or radial gradient as background or border, check our [CSS Gradient Generator](#).

Hey! You found this booklet interesting? Support Converting Colors with the new Membership Option!

The pro membership hides all ads, plus gives you double the colors in the color bucket, and more awesome pro features!

[Learn more, Memberships starting at \\$2.50/m!](#)

**Follow me
on Twitter!**

@ConvertingColor