

Converting Colors

Hex(EC4675)

Have a look what the booklet for
Hex(EC4675) contains.

Hex(EC4675)	3
<i>Conversions</i>	4
<i>Details</i>	6
<i>Harmonies</i>	11
<i>Previews</i>	23
<i>Color Blindness Simulation</i>	26
<i>CSS Examples</i>	29

Color

Hex(EC4675)

Conversions

Conversions Part 1

Format	Color
Hex	EC4675
RGB	236, 70, 117
RGB Percent	93%, 27%, 46%
CMY	0.0745, 0.7255, 0.5412
CMYK	0.00, 0.70, 0.50, 0.07
HSL	343°, 81%, 60%
HSV	343°, 70%, 93%
XYZ	39.9931, 23.4975, 19.2572
YIQ	124.9920, 83.8490, 49.8090

Conversions

Conversions Part 2

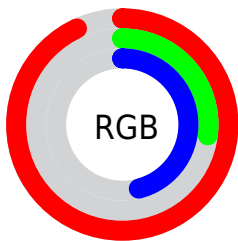
Format	Color
R_{YB}	236, 70, 117
Decimal	15484533
CIE _{Lab}	55.58, 66.13, 11.15
CIE _{LCh}	56, 67.067, 9.571
Yxy	23.4975, 0.4833, 0.2840
Android (android.graphics.Color)	4293674613 (0xFFEC4675)
YUV	124.9920, -3.9401, 97.3540
Hunter-Lab	48.4743, 62.4394, 10.3780

Details

The Hex color **EC4675** is a dark color, and the websafe version is hex **CC3366**. The color can be described as middle muted rose. A complement of this color would be **46ECBD**, and the grayscale version is **7D7D7D**.

A 20% lighter version of the original color is **FF81A9**, and **AE0045** is the 20% darker color. If you saturate the color by 10%, you get **EC2E64**, and if you desaturate by 10%, it is **EC5E86**.

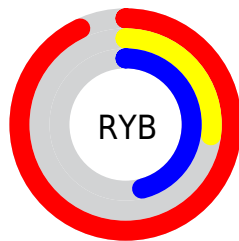
Distribution



Red (93%)

Green (27%)

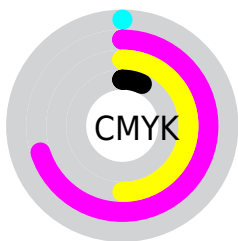
Blue (46%)



Red (93%)

Yellow (27%)

Blue (46%)

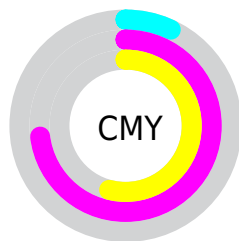


Cyan (0%)

Magenta (70%)

Yellow (50%)

Black (7%)



Cyan (7%)

Magenta (73%)

Yellow (54%)

Brightness & Saturation Gradients

These gradients show how the Hex color EC4675 changes by changing the brightness by 10 percent. The first figure shows a shift by +10% for each color and the second figure -10%.

Similar to the brightness gradients but the following saturation gradients show a change of the Hex color EC4675 by changing the saturation by 10% instead.

 EC4675

 EC4675

FFFFFF

 CD235D

 FF81A9

 AE0045

 FF9EC4

 90002F

 FFBBE0

 72001B

 FFD8FC

 550001

 FFF6FF

 370002

 0A0000

 000000

 EC4675

 EC4675

 EC2E64

 EC5E86

 EC1753

 EC7597

 EC0043

 EC8DA8

 ECA4B9

 ECBCCA

 ECD4DB

 ECEBEB

 ECFFFC

 ECFFFF

Harmonies

Analogous

The Analogous color harmony consists of three colors that are next to each other on the color wheel.



D851AF



EC4675



E1593E

Triad

The Triadic color harmony groups three colors that are evenly spaced from another and form a triangle on the color wheel.



EC4675



4E961E



0096F2

Complementary

The Complementary color scheme is a pair of colors which are on the opposite of each other on the color wheel.



EC4675



46ECBD

Split Complementary

Split-complementary colors differ from the complementary color scheme. The scheme consists of three colors, the original color and two neighbors of the complement color.



009ECE



EC4675



009D5A

Square

The Square scheme is like the rectangle color scheme, but the four colors are evenly spaced on the color wheel.



EC4675



8F8800



00A097



0086F9

Rectangle

The Rectangle color scheme consists of four colors that form a rectangle on the color wheel.



EC4675



CD6B19



00A097



009AE9

Sweetspot

The Sweet Spot groups the original color and five complimentary colors.



EC4675



FFC9D9



BD46EC



806069



000000



808080

Same Dimension

The Same Dimension uses a secret algorithm to generate beautiful new colors.



EC4675



FF2965



EC6A46



756A6D



B50033



36000F

Inverse Universe

The Inverse Universe completely reimagines the original color for something new.



EC4675



FF2965



46C8EC



756A6D



B50033



36000F

Previews

White Background



This preview shows how the Hex color EC4675 looks on a white background.

Color Contrast Check

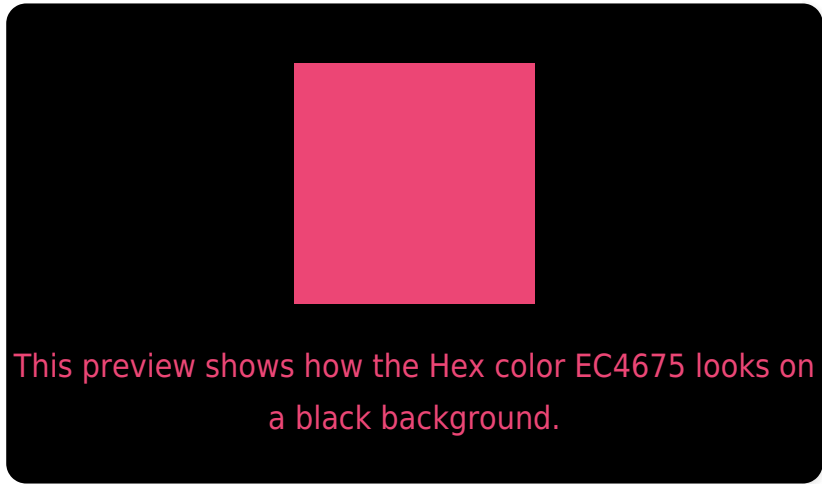
Large Text (above 18pt) WCAG AA ✓ Pass

Any Text WCAG AA × Fail

Large Text (above 18pt) WCAG AAA × Fail

Any Text WCAG AAA × Fail

Black Background



Color Contrast Check

Large Text (above 18pt) WCAG AA ✓ Pass

Any Text WCAG AA ✓ Pass

Large Text (above 18pt) WCAG AAA ✓ Pass

Any Text WCAG AAA × Fail

If you want to check with other color combinations, try the [Color Contrast Checker](#).

Hex EC4675 Background



This preview shows how black text looks on a background with the Hex color EC4675.



This preview shows how white text looks on a background with the Hex color EC4675.

Color Blindness Simulation

Color vision deficiency is a very complex topic, and I could not describe the different causes any better than Wikipedia does, so if you want to learn more, you should check out their [article about color blindness](#).


Dichromacy



Original Color
EC4675

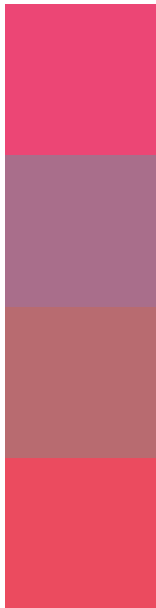
Protanopia
838597

Deuteranopia
9B806D



Tritanopia
EA4E52

Trichromacy



Original Color
EC4675

Protanomaly
A96E8B

Deuteranomaly
B86B70

Tritanomaly
EB4B5F

Monochromacy



Original Color
EC4675

Achromatopsia
7D7D7D

Achromatomaly
A5697A

CSS Examples

Text

The CSS property to change the color of the text to Hex EC4675 is called "color". The color property can be set on classes, ids or directly on the HTML element.

This example shows how text in the color #EC4675 looks like.

```
.text, #text, p{  
    color:#EC4675  
}
```

If you want to add a text shadow in that color use the text-shadow property, you can generate a text shadow directly with our [CSS Text Shadow Generator](#).

Here you see how black text with a 4 pixel #EC4675 colored shadow looks like.

```
.shadow{ text-shadow: 4px 4px 2px #EC4675  
}
```

Border

The CSS property to change the border of an element to Hex EC4675 is called "border". The border property can be set on classes, ids or directly on the HTML element.

This example shows the color as border, it can be applied via the CSS property "border" or "border-color".

```
.border, #border, table{ border:4px solid  
#EC4675 }
```

If only the border color should be changed use the property `border-color`.

```
.border{ border-color:#EC4675 }
```

If you want to add a box shadow in that color use:

Here you see how a box with a 4 pixel #EC4675 colored shadow looks like.

```
.boxshadow{ -moz-box-shadow:4px 4px 4px  
4px #EC4675; -webkit-box-shadow:4px 4px  
4px 4px #EC4675; box-shadow:4px 4px 4px  
4px #EC4675 }
```

Background

The CSS property to change the background color of an element to Hex EC4675 is called "background". The background property can be set on classes, ids or directly on the HTML element.

```
.background, #background, body{  
background:#EC4675 }
```

If only the background color should be changed can be used:

```
.background{ background-color:#EC4675 }
```

This example shows the color as background, it is applied via the CSS property "background".

To optimize and compress your CSS code, you can use our [online CSS compressor and optimizer](#) based on csstidy. If you want to create a linear or radial gradient as background or border, check our [CSS Gradient Generator](#).

Hey! You found this booklet interesting? Support Converting Colors with the new Membership Option!

The pro membership hides all ads, plus gives you double the colors in the color bucket, and more awesome pro features!

[Learn more, Memberships starting at \\$2.50/m!](#)

**Follow me
on Twitter!**

@ConvertingColor