

Converting Colors

Hex(EC4676)

Have a look what the booklet for
Hex(EC4676) contains.

Hex(EC4676)	3
<i>Conversions</i>	4
<i>Details</i>	6
<i>Harmonies</i>	11
<i>Previews</i>	23
<i>Color Blindness Simulation</i>	26
<i>CSS Examples</i>	29

Color

Hex(EC4676)

Conversions

Conversions Part 1

Format	Color
Hex	EC4676
RGB	236, 70, 118
RGB Percent	93%, 27%, 46%
CMY	0.0745, 0.7255, 0.5373
CMYK	0.00, 0.70, 0.50, 0.07
HSL	343°, 81%, 60%
HSV	343°, 70%, 93%
XYZ	40.0522, 23.5212, 19.5686
YIQ	125.1060, 83.5280, 50.1200

Conversions

Conversions Part 2

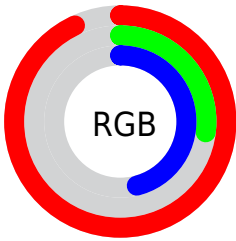
Format	Color
R_{YB}	236, 70, 118
Decimal	15484534
CIE _{Lab}	55.61, 66.21, 10.59
CIE _{LCh}	56, 67.056, 9.088
Yxy	23.5212, 0.4817, 0.2829
Android (android.graphics.Color)	4293674614 (0xFFEC4676)
YUV	125.1060, -3.5033, 97.2540
Hunter-Lab	48.4987, 62.5402, 10.0263

Details

The Hex color **EC4676** is a dark color, and the websafe version is hex **CC3366**. The color can be described as middle muted rose. A complement of this color would be **46ECBC**, and the grayscale version is **7D7D7D**.

A 20% lighter version of the original color is **FF81AA**, and **AE0046** is the 20% darker color. If you saturate the color by 10%, you get **EC2E65**, and if you desaturate by 10%, it is **EC5E87**.

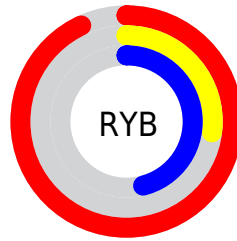
Distribution



Red (93%)

Green (27%)

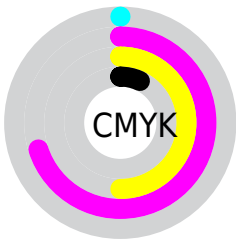
Blue (46%)



Red (93%)

Yellow (27%)

Blue (46%)

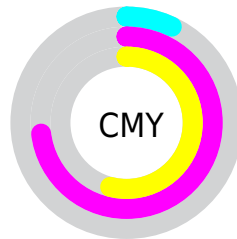


Cyan (0%)

Magenta (70%)

Yellow (50%)

Black (7%)



Cyan (7%)

Magenta (73%)

Yellow (54%)

Brightness & Saturation Gradients

These gradients show how the Hex color EC4676 changes by changing the brightness by 10 percent. The first figure shows a shift by +10% for each color and the second figure -10%.

Similar to the brightness gradients but the following saturation gradients show a change of the Hex color EC4676 by changing the saturation by 10% instead.

 EC4676

 EC4676

FFFFFF

 CD235E

 FF81AA

 AE0046

 FF9EC5

 900030

 FFBBE1

 72001C

 FFD8FE

 550001

 FFF6FF

 370002

 0B0000

 000000

 EC4676

 EC4676

 EC2E65

 EC5E87

 EC1754

 EC7598

 EC0044

 EC8DA8

 ECA4B9

 ECBCCA

 ECD4DB

 ECEBEB

 ECFFFC

 ECFFFF

Harmonies

Analogous

The Analogous color harmony consists of three colors that are next to each other on the color wheel.



D751B0



EC4676



E2583E

Triad

The Triadic color harmony groups three colors that are evenly spaced from another and form a triangle on the color wheel.



EC4676



50961D



0097F2

Complementary

The Complementary color scheme is a pair of colors which are on the opposite of each other on the color wheel.



EC4676



46ECBC

Split Complementary

Split-complementary colors differ from the complementary color scheme. The scheme consists of three colors, the original color and two neighbors of the complement color.



009ECE



EC4676



009D59

Square

The Square scheme is like the rectangle color scheme, but the four colors are evenly spaced on the color wheel.



EC4676



908800



00A096



0086F9

Rectangle

The Rectangle color scheme consists of four colors that form a rectangle on the color wheel.



EC4676



CE6A1A



00A096



009AE9

Sweetspot

The Sweet Spot groups the original color and five complimentary colors.



EC4676



FFC9D9



BA46EC



806069



000000



808080

Same Dimension

The Same Dimension uses a secret algorithm to generate beautiful new colors.



EC4676



FF2967



EC6746



756A6D



B50034



36000F

Inverse Universe

The Inverse Universe completely reimagines the original color for something new.



EC4676



FF2967



46CBEC



756A6D



B50034



36000F

Previews

White Background



This preview shows how the Hex color EC4676 looks on a white background.

Color Contrast Check

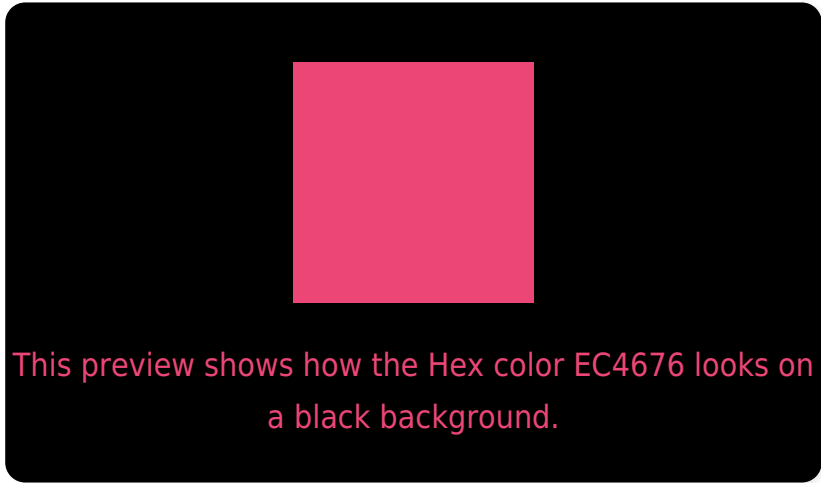
Large Text (above 18pt) WCAG AA ✓ Pass

Any Text WCAG AA × Fail

Large Text (above 18pt) WCAG AAA × Fail

Any Text WCAG AAA × Fail

Black Background



Color Contrast Check

Large Text (above 18pt) WCAG AA ✓ Pass

Any Text WCAG AA ✓ Pass

Large Text (above 18pt) WCAG AAA ✓ Pass

Any Text WCAG AAA × Fail

If you want to check with other color combinations, try the [Color Contrast Checker](#).

Hex EC4676 Background



This preview shows how black text looks on a background with the Hex color EC4676.

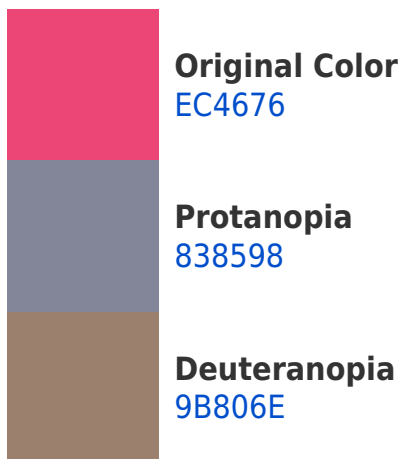


This preview shows how white text looks on a background with the Hex color EC4676.

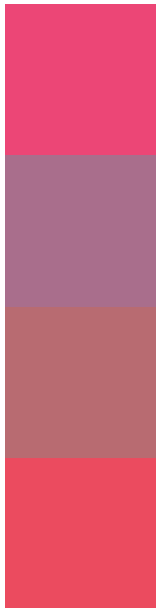
Color Blindness Simulation

Color vision deficiency is a very complex topic, and I could not describe the different causes any better than Wikipedia does, so if you want to learn more, you should check out their [article about color blindness](#).

Dichromacy



Trichromacy



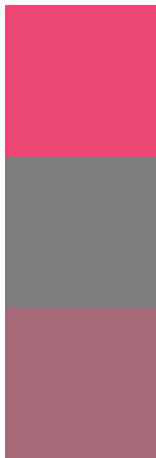
Original Color
EC4676

Protanomaly
A96E8C

Deuteranomaly
B86B71

Tritanomaly
EB4B5F

Monochromacy



Original Color
EC4676

Achromatopsia
7D7D7D

Achromatomaly
A5697A

CSS Examples

Text

The CSS property to change the color of the text to Hex EC4676 is called "color". The color property can be set on classes, ids or directly on the HTML element.

This example shows how text in the color #EC4676 looks like.

```
.text, #text, p{  
  color:#EC4676  
}
```

If you want to add a text shadow in that color use the text-shadow property, you can generate a text shadow directly with our [CSS Text Shadow Generator](#).

Here you see how black text with a 4 pixel #EC4676 colored shadow looks like.

```
.shadow{ text-shadow: 4px 4px 2px #EC4676
}
```

Border

The CSS property to change the border of an element to Hex EC4676 is called "border". The border property can be set on classes, ids or directly on the HTML element.

This example shows the color as border, it can be applied via the CSS property "border" or "border-color".

```
.border, #border, table{ border:4px solid
#EC4676 }
```

If only the border color should be changed use the property `border-color`.

```
.border{ border-color:#EC4676 }
```

If you want to add a box shadow in that color use:

Here you see how a box with a 4 pixel #EC4676 colored shadow looks like.

```
.boxshadow{ -moz-box-shadow:4px 4px 4px  
4px #EC4676; -webkit-box-shadow:4px 4px  
4px 4px #EC4676; box-shadow:4px 4px 4px  
4px #EC4676 }
```

Background

The CSS property to change the background color of an element to Hex EC4676 is called "background". The background property can be set on classes, ids or directly on the HTML element.

```
.background, #background, body{  
background:#EC4676 }
```

If only the background color should be changed can be used:

```
.background{ background-color:#EC4676 }
```

This example shows the color as background, it is applied via the CSS property "background".

To optimize and compress your CSS code, you can use our [online CSS compressor and optimizer](#) based on csstidy. If you want to create a linear or radial gradient as background or border, check our [CSS Gradient Generator](#).

Hey! You found this booklet interesting? Support Converting Colors with the new Membership Option!

The pro membership hides all ads, plus gives you double the colors in the color bucket, and more awesome pro features!

[Learn more, Memberships starting at \\$2.50/m!](#)

**Follow me
on Twitter!**

@ConvertingColor