

Converting Colors

Hex(EC4F80)

Have a look what the booklet for
Hex(EC4F80) contains.

Hex(EC4F80)	3
<i>Conversions</i>	4
<i>Details</i>	6
<i>Harmonies</i>	11
<i>Previews</i>	23
<i>Color Blindness Simulation</i>	26
<i>CSS Examples</i>	29

Color

Hex(EC4F80)

Conversions

Conversions Part 1

Format	Color
Hex	EC4F80
RGB	236, 79, 128
RGB Percent	93%, 31%, 50%
CMY	0.0745, 0.6902, 0.4980
CMYK	0.00, 0.67, 0.46, 0.07
HSL	341°, 81%, 62%
HSV	341°, 67%, 93%
XYZ	41.2843, 24.9833, 23.0684
YIQ	131.5290, 77.8430, 48.5230

Conversions

Conversions Part 2

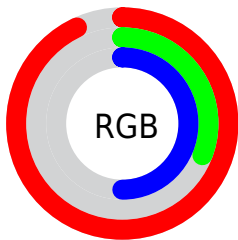
Format	Color
R_{YB}	236, 79, 128
Decimal	15486848
CIE _{Lab}	57.06, 63.75, 6.73
CIE _{LCh}	57, 64.107, 6.030
Yxy	24.9833, 0.4621, 0.2797
Android (android.graphics.Color)	4293676928 (0xFFEC4F80)
YUV	131.5290, -1.7398, 91.6211
Hunter-Lab	49.9833, 59.9634, 7.6247

Details

The Hex color **EC4F80** is a dark color, and the websafe version is hex **FF6699**. The color can be described as middle muted rose. A complement of this color would be **4FECBB**, and the grayscale version is **838383**.

A 20% lighter version of the original color is **FF89B5**, and **AF004F** is the 20% darker color. If you saturate the color by 10%, you get **EC3770**, and if you desaturate by 10%, it is **EC6790**.

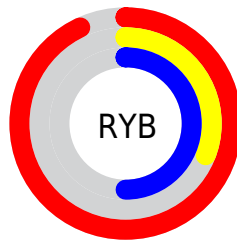
Distribution



Red (93%)

Green (31%)

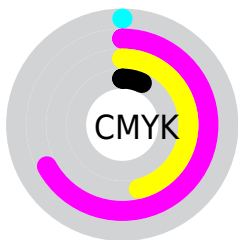
Blue (50%)



Red (93%)

Yellow (31%)

Blue (50%)

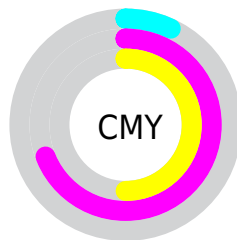


Cyan (0%)

Magenta (67%)

Yellow (46%)

Black (7%)



Cyan (7%)

Magenta (69%)

Yellow (50%)

Brightness & Saturation Gradients

These gradients show how the Hex color EC4F80 changes by changing the brightness by 10 percent. The first figure shows a shift by +10% for each color and the second figure -10%.

Similar to the brightness gradients but the following saturation gradients show a change of the Hex color EC4F80 by changing the saturation by 10% instead.

 EC4F80

 EC4F80

FFFFFF

 CD2F67

 FF89B5

 AF004F

 FFA5D0

 910039

 FFC2EC

 730024

 FFE0FF

 56000E

 FFFDFD

 3A0002

 130000

 000000

 EC4F80

 EC4F80

 EC3770

 EC6790

 EC2060

 EC7EA0

 EC084F

 EC96B1

 EC004A

 ECADC1

 ECC5D1

 ECDDE1

 ECF4F2

 ECFFFF

Harmonies

Analogous

The Analogous color harmony consists of three colors that are next to each other on the color wheel.



D45BB7



EC4F80



E55D4A

Triad

The Triadic color harmony groups three colors that are evenly spaced from another and form a triangle on the color wheel.



EC4F80



5E9823



009BEF

Complementary

The Complementary color scheme is a pair of colors which are on the opposite of each other on the color wheel.



EC4F80



4FECBB

Split Complementary

Split-complementary colors differ from the complementary color scheme. The scheme consists of three colors, the original color and two neighbors of the complement color.



00A2CA



EC4F80



00A059

Square

The Square scheme is like the rectangle color scheme, but the four colors are evenly spaced on the color wheel.



EC4F80



998A00



00A393



008CF9

Rectangle

The Rectangle color scheme consists of four colors that form a rectangle on the color wheel.



EC4F80



D36D2A



00A393



009EE5

Sweetspot

The Sweet Spot groups the original color and five complimentary colors.



EC4F80



FFCCDC



BA4FEC



80616A



000000



808080

Same Dimension

The Same Dimension uses a secret algorithm to generate beautiful new colors.



EC4F80



FF3373



EC6C4F



756A6D



B50039



360011

Inverse Universe

The Inverse Universe completely reimagines the original color for something new.



EC4F80



FF3373



4FCFEC



756A6D



B50039



360011

Previews

White Background



This preview shows how the Hex color EC4F80 looks on a white background.

Color Contrast Check

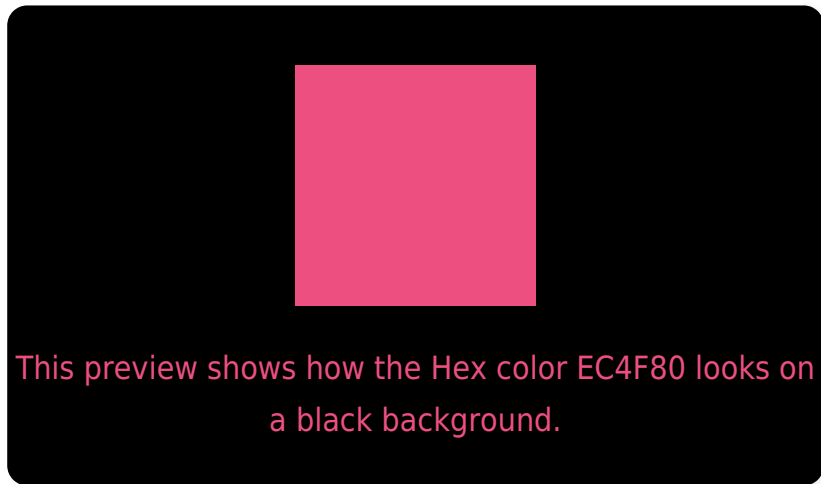
Large Text (above 18pt) WCAG AA ✓ Pass

Any Text WCAG AA × Fail

Large Text (above 18pt) WCAG AAA × Fail

Any Text WCAG AAA × Fail

Black Background



Color Contrast Check

Large Text (above 18pt) WCAG AA ✓ Pass

Any Text WCAG AA ✓ Pass

Large Text (above 18pt) WCAG AAA ✓ Pass

Any Text WCAG AAA × Fail

If you want to check with other color combinations, try the [Color Contrast Checker](#).

Hex EC4F80 Background



This preview shows how black text looks on a background with the Hex color EC4F80.



This preview shows how white text looks on a background with the Hex color EC4F80.

Color Blindness Simulation

Color vision deficiency is a very complex topic, and I could not describe the different causes any better than Wikipedia does, so if you want to learn more, you should check out their [article about color blindness](#).

Dichromacy

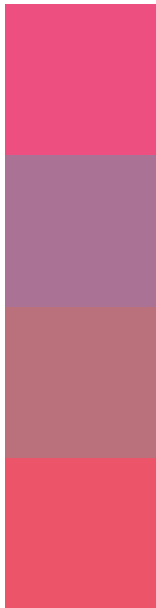


Original Color
EC4F80

Protanopia
8588A1

Deuteranopia
9D8478

Trichromacy



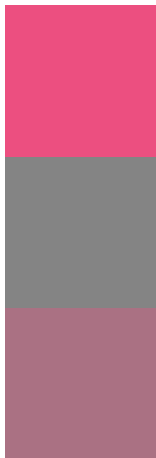
Original Color
EC4F80

Protanomaly
AA7395

Deuteranomaly
BA717B

Tritanomaly
EB5469

Monochromacy



Original Color
EC4F80

Achromatopsia
848484

Achromatomaly
AA7183

CSS Examples

Text

The CSS property to change the color of the text to Hex EC4F80 is called "color". The color property can be set on classes, ids or directly on the HTML element.

This example shows how text in the color #EC4F80 looks like.

```
.text, #text, p{  
    color:#EC4F80  
}
```

If you want to add a text shadow in that color use the text-shadow property, you can generate a text shadow directly with our [CSS Text Shadow Generator](#).

Here you see how black text with a 4 pixel #EC4F80 colored shadow looks like.

```
.shadow{ text-shadow: 4px 4px 2px #EC4F80
}
```

Border

The CSS property to change the border of an element to Hex EC4F80 is called "border". The border property can be set on classes, ids or directly on the HTML element.

This example shows the color as border, it can be applied via the CSS property "border" or "border-color".

```
.border, #border, table{ border:4px solid
#EC4F80 }
```

If only the border color should be changed use the property `border-color`.

```
.border{ border-color:#EC4F80 }
```

If you want to add a box shadow in that color use:

Here you see how a box with a 4 pixel #EC4F80 colored shadow looks like.

```
.boxshadow{ -moz-box-shadow:4px 4px 4px  
4px #EC4F80; -webkit-box-shadow:4px 4px  
4px 4px #EC4F80; box-shadow:4px 4px 4px  
4px #EC4F80 }
```

Background

The CSS property to change the background color of an element to Hex EC4F80 is called "background". The background property can be set on classes, ids or directly on the HTML element.

```
.background, #background, body{  
background:#EC4F80 }
```

If only the background color should be changed can be used:

```
.background{ background-color:#EC4F80 }
```

This example shows the color as background, it is applied via the CSS property "background".

To optimize and compress your CSS code, you can use our [online CSS compressor and optimizer](#) based on csstidy. If you want to create a linear or radial gradient as background or border, check our [CSS Gradient Generator](#).

Hey! You found this booklet interesting? Support Converting Colors with the new Membership Option!

The pro membership hides all ads, plus gives you double the colors in the color bucket, and more awesome pro features!

[Learn more, Memberships starting at \\$2.50/m!](#)

**Follow me
on Twitter!**

@ConvertingColor