

Converting Colors

Hex(EC4F8B)

Have a look what the booklet for
Hex(EC4F8B) contains.

Hex(EC4F8B)	3
<i>Conversions</i>	4
<i>Details</i>	6
<i>Harmonies</i>	11
<i>Previews</i>	23
<i>Color Blindness Simulation</i>	26
<i>CSS Examples</i>	29

Color

Hex(**EC4F8B**)

Conversions

Conversions Part 1

Format	Color
Hex	EC4F8B
RGB	236, 79, 139
RGB Percent	93%, 31%, 55%
CMY	0.0745, 0.6902, 0.4549
CMYK	0.00, 0.67, 0.41, 0.07
HSL	337°, 81%, 62%
HSV	337°, 67%, 93%
XYZ	42.0483, 25.2889, 27.0912
YIQ	132.7830, 74.3120, 51.9440

Conversions

Conversions Part 2

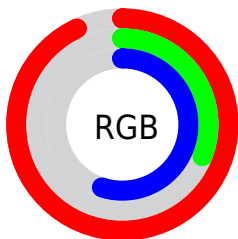
Format	Color
R_{YB}	236, 79, 139
Decimal	15486859
CIE _{Lab}	57.36, 64.79, 0.68
CIE _{LCh}	57, 64.798, 0.605
Yxy	25.2889, 0.4453, 0.2678
Android (android.graphics.Color)	4293676939 (0xFFEC4F8B)
YUV	132.7830, 3.0650, 90.5213
Hunter-Lab	50.2881, 61.2482, 3.2610

Details

The Hex color **EC4F8B** is a dark color, and the websafe version is hex **FF6699**. The color can be described as middle muted rose. A complement of this color would be **4FECB0**, and the grayscale version is **858585**.

A 20% lighter version of the original color is **FF89C0**, and **AF0059** is the 20% darker color. If you saturate the color by 10%, you get **EC377C**, and if you desaturate by 10%, it is **EC679A**.

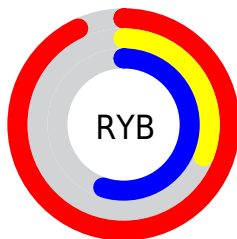
Distribution



Red (93%)

Green (31%)

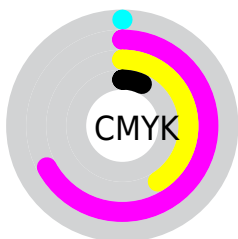
Blue (55%)



Red (93%)

Yellow (31%)

Blue (55%)

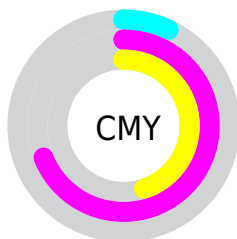


Cyan (0%)

Magenta (67%)

Yellow (41%)

Black (7%)



Cyan (7%)

Magenta (69%)

Yellow (45%)

Brightness & Saturation Gradients

These gradients show how the Hex color EC4F8B changes by changing the brightness by 10 percent. The first figure shows a shift by +10% for each color and the second figure -10%.

Similar to the brightness gradients but the following saturation gradients show a change of the Hex color EC4F8B by changing the saturation by 10% instead.

 EC4F8B

 EC4F8B

FFFFFF

 CD2F72

 FF89C0

 AF0059

 FFA6DC

 910042

 FFC3F9

 74002C

 FFE0FF

 570018

FFFEFF

 3C0003

 160000

 000000

 EC4F8B

 EC4F8B

 EC377C

 EC679A

 EC206E

 EC7EA8

 EC085F

 EC96B7

 EC005A

 ECADC5

 ECC5D4

 ECDDE2

 ECF4F1

 ECFFFF

Harmonies

Analogous

The Analogous color harmony consists of three colors that are next to each other on the color wheel.



CE5FC2



EC4F8B



EA5954

Triad

The Triadic color harmony groups three colors that are evenly spaced from another and form a triangle on the color wheel.



EC4F8B



6B9718



009DEC

Complementary

The Complementary color scheme is a pair of colors which are on the opposite of each other on the color wheel.



EC4F8B



4FECB0

Split Complementary

Split-complementary colors differ from the complementary color scheme. The scheme consists of three colors, the original color and two neighbors of the complement color.



00A3C2



EC4F8B



00A04F

Square

The Square scheme is like the rectangle color scheme, but the four colors are evenly spaced on the color wheel.



EC4F8B



A48800



00A489



0090FB

Rectangle

The Rectangle color scheme consists of four colors that form a rectangle on the color wheel.



EC4F8B



DB6932



00A489



00A0E0

Sweetspot

The Sweet Spot groups the original color and five complimentary colors.



EC4F8B



FFCCDF



B04FEC



80616D



000000



808080

Same Dimension

The Same Dimension uses a secret algorithm to generate beautiful new colors.



EC4F8B



FF3381



EC614F



756A6E



B50045



360014

Inverse Universe

The Inverse Universe completely reimagines the original color for something new.



EC4F8B



FF3381



4FDAEC



756A6E



B50045



360014

Previews

White Background



This preview shows how the Hex color EC4F8B looks on a white background.

Color Contrast Check

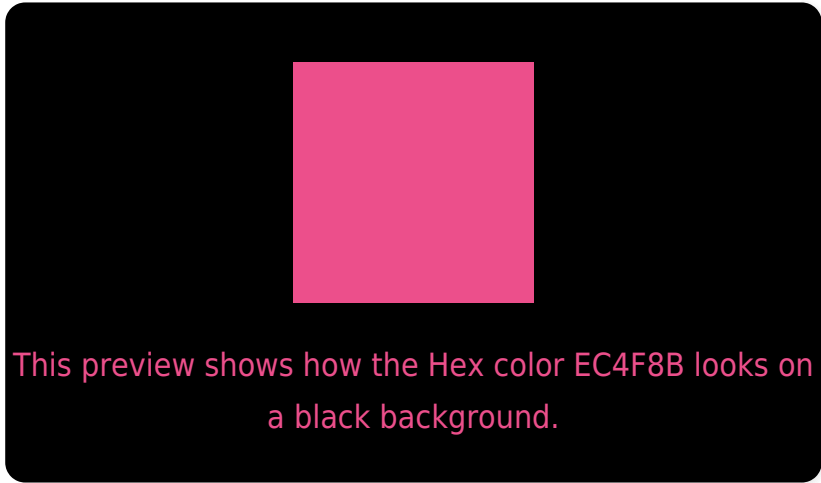
Large Text (above 18pt) WCAG AA ✓ Pass

Any Text WCAG AA × Fail

Large Text (above 18pt) WCAG AAA × Fail

Any Text WCAG AAA × Fail

Black Background



Color Contrast Check

Large Text (above 18pt) WCAG AA ✓ Pass

Any Text WCAG AA ✓ Pass

Large Text (above 18pt) WCAG AAA ✓ Pass

Any Text WCAG AAA × Fail

If you want to check with other color combinations, try the [Color Contrast Checker](#).

Hex EC4F8B Background



This preview shows how black text looks on a background with the Hex color EC4F8B.



This preview shows how white text looks on a background with the Hex color EC4F8B.

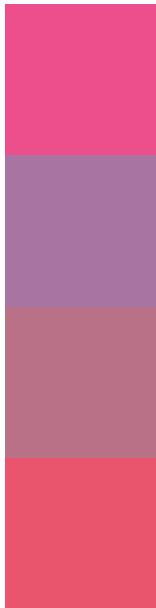
Color Blindness Simulation

Color vision deficiency is a very complex topic, and I could not describe the different causes any better than Wikipedia does, so if you want to learn more, you should check out their [article about color blindness](#).

Dichromacy



Trichromacy



Original Color
EC4F8B

Protanomaly
A874A1

Deuteranomaly
B87186

Tritanomaly
EA556E

Monochromacy



Original Color
EC4F8B

Achromatopsia
858585

Achromatomaly
AA7187

CSS Examples

Text

The CSS property to change the color of the text to Hex EC4F8B is called "color". The color property can be set on classes, ids or directly on the HTML element.

This example shows how text in the color #EC4F8B looks like.

```
.text, #text, p{  
    color:#EC4F8B  
}
```

If you want to add a text shadow in that color use the text-shadow property, you can generate a text shadow directly with our [CSS Text Shadow Generator](#).

Here you see how black text with a 4 pixel #EC4F8B colored shadow looks like.

```
.shadow{ text-shadow: 4px 4px 2px #EC4F8B
}
```

Border

The CSS property to change the border of an element to Hex EC4F8B is called "border". The border property can be set on classes, ids or directly on the HTML element.

This example shows the color as border, it can be applied via the CSS property "border" or "border-color".

```
.border, #border, table{ border:4px solid
#EC4F8B }
```

If only the border color should be changed use the property `border-color`.

```
.border{ border-color:#EC4F8B }
```

If you want to add a box shadow in that color use:

Here you see how a box with a 4 pixel #EC4F8B colored shadow looks like.

```
.boxshadow{ -moz-box-shadow:4px 4px 4px  
4px #EC4F8B; -webkit-box-shadow:4px 4px  
4px 4px #EC4F8B; box-shadow:4px 4px 4px  
4px #EC4F8B }
```

Background

The CSS property to change the background color of an element to Hex EC4F8B is called "background". The background property can be set on classes, ids or directly on the HTML element.

```
.background, #background, body{  
background:#EC4F8B }
```

If only the background color should be changed can be used:

```
.background{ background-color:#EC4F8B }
```

This example shows the color as background, it is applied via the CSS property "background".

To optimize and compress your CSS code, you can use our [online CSS compressor and optimizer](#) based on csstidy. If you want to create a linear or radial gradient as background or border, check our [CSS Gradient Generator](#).

Hey! You found this booklet interesting? Support Converting Colors with the new Membership Option!

The pro membership hides all ads, plus gives you double the colors in the color bucket, and more awesome pro features!

[Learn more, Memberships starting at \\$2.50/m!](#)

**Follow me
on Twitter!**

@ConvertingColor