

Converting Colors

Hex(EC6391)

Have a look what the booklet for
Hex(EC6391) contains.

Hex(EC6391)	3
<i>Conversions</i>	4
<i>Details</i>	6
<i>Harmonies</i>	11
<i>Previews</i>	23
<i>Color Blindness Simulation</i>	26
<i>CSS Examples</i>	29

Color

Hex(EC6391)

Conversions

Conversions Part 1

Format	Color
Hex	EC6391
RGB	236, 99, 145
RGB Percent	93%, 39%, 57%
CMY	0.0745, 0.6118, 0.4314
CMYK	0.00, 0.58, 0.39, 0.07
HSL	340°, 78%, 66%
HSV	340°, 58%, 93%
XYZ	44.1647, 28.8009, 30.0194
YIQ	145.2070, 66.8860, 43.3500

Conversions

Conversions Part 2

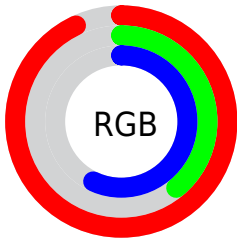
Format	Color
R _Y B	236, 99, 145
Decimal	15491985
CIE Lab	60.61, 57.08, 1.91
CIE LCh	61, 57.108, 1.915
Yxy	28.8009, 0.4288, 0.2797
Android (android.graphics.Color)	4293682065 (0xFFEC6391)
YUV	145.2070, -0.1021, 79.6255
Hunter-Lab	53.6665, 52.9801, 4.4014

Details

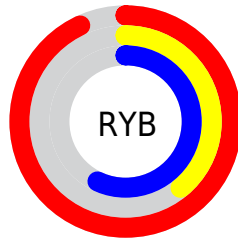
The Hex color **EC6391** is a light color, and the websafe version is hex **FF6699**. A complement of this color would be **63ECBE**, and the grayscale version is **919191**.

A 20% lighter version of the original color is **FF9BC7**, and **B0295F** is the 20% darker color. If you saturate the color by 10%, you get **EC4B81**, and if you desaturate by 10%, it is **EC7BA1**.

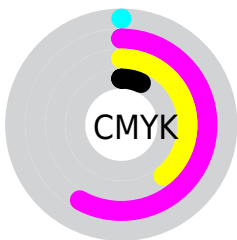
Distribution



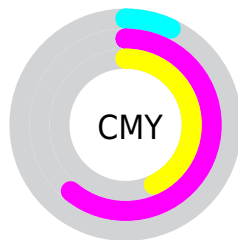
- Red (93%)
- Green (39%)
- Blue (57%)



- Red (93%)
- Yellow (39%)
- Blue (57%)



- Cyan (0%)
- Magenta (58%)
- Yellow (39%)
- Black (7%)



- Cyan (7%)
- Magenta (61%)
- Yellow (43%)

Brightness & Saturation Gradients

These gradients show how the Hex color EC6391 changes by changing the brightness by 10 percent. The first figure shows a shift by +10% for each color and the second figure -10%.

Similar to the brightness gradients but the following saturation gradients show a change of the Hex color EC6391 by changing the saturation by 10% instead.

 EC6391

 EC6391

FFFFFF

 CE4777

 FF9BC7

 B0295F

 FFB7E3

 930047

 FFD4FF

 760031

 FFF1FF

 59001C

 400003

 1E0001

 000000

 EC6391

 EC6391

 EC4B81

 EC7BA1

 EC3472

 EC92B0

 EC1C62

 ECAAC0

 EC0552

 ECC1D0

 EC004F

 ECD9DF

 ECF1EF

 ECFFFF

Harmonies

Analogous

The Analogous color harmony consists of three colors that are next to each other on the color wheel.



D26EC2



EC6391



EA6B60

Triad

The Triadic color harmony groups three colors that are evenly spaced from another and form a triangle on the color wheel.



EC6391



779F36



00A4EB

Complementary

The Complementary color scheme is a pair of colors which are on the opposite of each other on the color wheel.



EC6391



63ECBE

Split Complementary

Split-complementary colors differ from the complementary color scheme. The scheme consists of three colors, the original color and two neighbors of the complement color.



00AAC6



EC6391



25A760

Square

The Square scheme is like the rectangle color scheme, but the four colors are evenly spaced on the color wheel.



EC6391



AA9123



00AA94



0297F7

Rectangle

The Rectangle color scheme consists of four colors that form a rectangle on the color wheel.



EC6391



DC7744



00AA94



00A6E1

Sweetspot

The Sweet Spot groups the original color and five complimentary colors.



EC6391



FFD4E2



BC63EC



80666F



000000



808080

Same Dimension

The Same Dimension uses a secret algorithm to generate beautiful new colors.



EC6391



FF4D88



EC7863



756A6E



B5003D



360012

Inverse Universe

The Inverse Universe completely reimagines the original color for something new.



EC6391



FF4D88



63D7EC



756A6E



B5003D



360012

Previews

White Background



This preview shows how the Hex color EC6391 looks on a white background.

Color Contrast Check

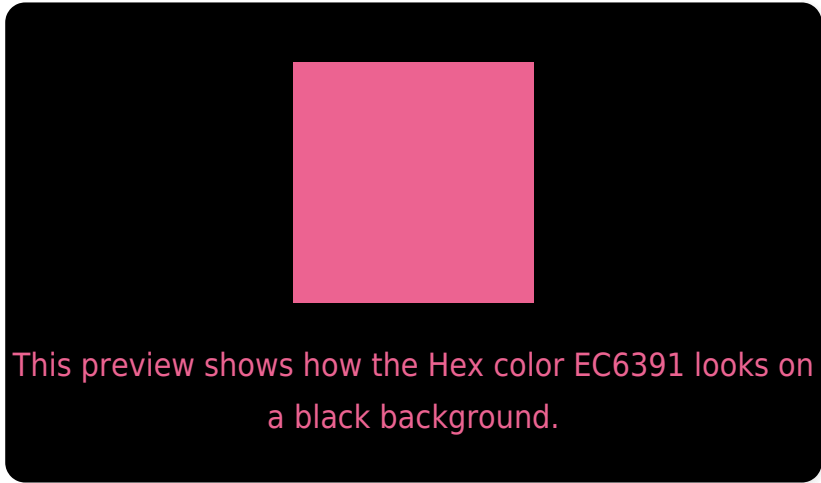
Large Text (above 18pt) WCAG AA ✓ Pass

Any Text WCAG AA × Fail

Large Text (above 18pt) WCAG AAA × Fail

Any Text WCAG AAA × Fail

Black Background



Color Contrast Check

Large Text (above 18pt) WCAG AA ✓ Pass

Any Text WCAG AA ✓ Pass

Large Text (above 18pt) WCAG AAA ✓ Pass

Any Text WCAG AAA × Fail

If you want to check with other color combinations, try the [Color Contrast Checker](#).

Hex EC6391 Background



This preview shows how black text looks on a background with the Hex color EC6391.




This preview shows how white text looks on a background with the Hex color EC6391.

Color Blindness Simulation

Color vision deficiency is a very complex topic, and I could not describe the different causes any better than Wikipedia does, so if you want to learn more, you should check out their [article about color blindness](#).

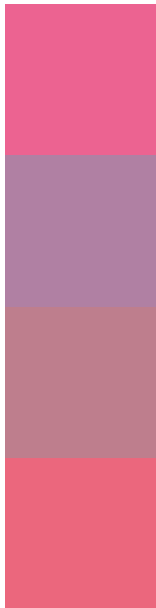
Dichromacy





Tritanopia
EA6971

Trichromacy



Original Color
EC6391

Protanomaly
B080A3

Deuteranomaly
BE7E8D

Tritanomaly
EB677D

Monochromacy



Original Color
EC6391

Achromatopsia
919191

Achromatomaly
B28091

CSS Examples

Text

The CSS property to change the color of the text to Hex EC6391 is called "color". The color property can be set on classes, ids or directly on the HTML element.

This example shows how text in the color #EC6391 looks like.

```
.text, #text, p{  
    color:#EC6391  
}
```

If you want to add a text shadow in that color use the text-shadow property, you can generate a text shadow directly with our [CSS Text Shadow Generator](#).

Here you see how black text with a 4 pixel #EC6391 colored shadow looks like.

```
.shadow{ text-shadow: 4px 4px 2px #EC6391
}
```

Border

The CSS property to change the border of an element to Hex EC6391 is called "border". The border property can be set on classes, ids or directly on the HTML element.

This example shows the color as border, it can be applied via the CSS property "border" or "border-color".

```
.border, #border, table{ border:4px solid
#EC6391 }
```

If only the border color should be changed use the property `border-color`.

```
.border{ border-color:#EC6391 }
```

If you want to add a box shadow in that color use:

Here you see how a box with a 4 pixel #EC6391 colored shadow looks like.

```
.boxshadow{ -moz-box-shadow:4px 4px 4px  
4px #EC6391; -webkit-box-shadow:4px 4px  
4px 4px #EC6391; box-shadow:4px 4px 4px  
4px #EC6391 }
```

Background

The CSS property to change the background color of an element to Hex EC6391 is called "background". The background property can be set on classes, ids or directly on the HTML element.

```
.background, #background, body{  
background:#EC6391 }
```

If only the background color should be changed can be used:

```
.background{ background-color:#EC6391 }
```

This example shows the color as background, it is applied via the CSS property "background".

To optimize and compress your CSS code, you can use our [online CSS compressor and optimizer](#) based on csstidy. If you want to create a linear or radial gradient as background or border, check our [CSS Gradient Generator](#).

Hey! You found this booklet interesting? Support Converting Colors with the new Membership Option!

The pro membership hides all ads, plus gives you double the colors in the color bucket, and more awesome pro features!

[Learn more, Memberships starting at \\$2.50/m!](#)

**Follow me
on Twitter!**

@ConvertingColor