

Converting Colors

Hex(EC6C93)

Have a look what the booklet for
Hex(EC6C93) contains.

Hex(EC6C93)	3
<i>Conversions</i>	4
<i>Details</i>	6
<i>Harmonies</i>	11
<i>Previews</i>	23
<i>Color Blindness Simulation</i>	26
<i>CSS Examples</i>	29

Color

Hex(EC6C93)

Conversions

Conversions Part 1

Format	Color
Hex	EC6C93
RGB	236, 108, 147
RGB Percent	93%, 42%, 58%
CMY	0.0745, 0.5765, 0.4235
CMYK	0.00, 0.54, 0.38, 0.07
HSL	342°, 77%, 67%
HSV	342°, 54%, 93%
XYZ	45.2211, 30.6646, 31.1392
YIQ	150.7180, 63.7690, 39.2650

Conversions

Conversions Part 2

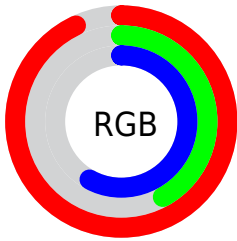
Format	Color
RYB	236, 108, 147
Decimal	15494291
CIELab	62.22, 53.17, 3.10
CIELCh	62, 53.255, 3.336
Yxy	30.6646, 0.4225, 0.2865
Android (android.graphics.Color)	4293684371 (0xFFEC6C93)
YUV	150.7180, -1.8330, 74.7923
Hunter-Lab	55.3756, 48.8602, 5.4225

Details

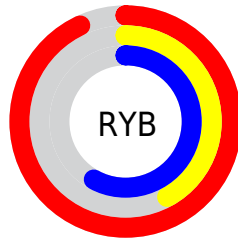
The Hex color **EC6C93** is a light color, and the websafe version is hex **FF6699**. A complement of this color would be **6CECC5**, and the grayscale version is **979797**.

A 20% lighter version of the original color is **FFA3C9**, and **B03561** is the 20% darker color. If you saturate the color by 10%, you get **EC5483**, and if you desaturate by 10%, it is **EC84A3**.

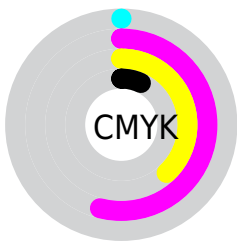
Distribution



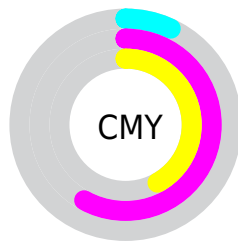
- Red (93%)
- Green (42%)
- Blue (58%)



- Red (93%)
- Yellow (42%)
- Blue (58%)



- Cyan (0%)
- Magenta (54%)
- Yellow (38%)
- Black (7%)



- Cyan (7%)
- Magenta (58%)
- Yellow (42%)

Brightness & Saturation Gradients

These gradients show how the Hex color EC6C93 changes by changing the brightness by 10 percent. The first figure shows a shift by +10% for each color and the second figure -10%.

Similar to the brightness gradients but the following saturation gradients show a change of the Hex color EC6C93 by changing the saturation by 10% instead.

 EC6C93

 EC6C93

FFFFFF

 CE5179

 FFA3C9

 B03561

 FFC0E5

 931349

 FFDCFF

 770033

 FFFAFF

 5A001E

 410003

 210001

 000000

 EC6C93

 EC6C93

 EC5483

 EC84A3

 EC3D72

 EC9BB4

 EC2562

 ECB3C4

 EC0E51

 ECCAD5

 EC0048

 ECE2E5

 ECFAF5

 ECFFFF

Harmonies

Analogous

The Analogous color harmony consists of three colors that are next to each other on the color wheel.



D475C2



EC6C93



E97365

Triad

The Triadic color harmony groups three colors that are evenly spaced from another and form a triangle on the color wheel.



EC6C93



7BA343



00A6EA

Complementary

The Complementary color scheme is a pair of colors which are on the opposite of each other on the color wheel.



EC6C93



6CECC5

Split Complementary

Split-complementary colors differ from the complementary color scheme. The scheme consists of three colors, the original color and two neighbors of the complement color.



00ADC9



EC6C93



34AA6A

Square

The Square scheme is like the rectangle color scheme, but the four colors are evenly spaced on the color wheel.



EC6C93



AC9632



00AE9A



3E9AF5

Rectangle

The Rectangle color scheme consists of four colors that form a rectangle on the color wheel.



EC6C93



DC7E4B



00AE9A



00A9E1

Sweetspot

The Sweet Spot groups the original color and five complimentary colors.



EC6C93



FFD6E3



C36CEC



80676F



000000



808080

Same Dimension

The Same Dimension uses a secret algorithm to generate beautiful new colors.



EC6C93



FF598C



EC836C



756A6D



B50037



360010

Inverse Universe

The Inverse Universe completely reimagines the original color for something new.



EC6C93



FF598C



6CD5EC



756A6D



B50037



360010

Previews

White Background



This preview shows how the Hex color EC6C93 looks on a white background.

Color Contrast Check

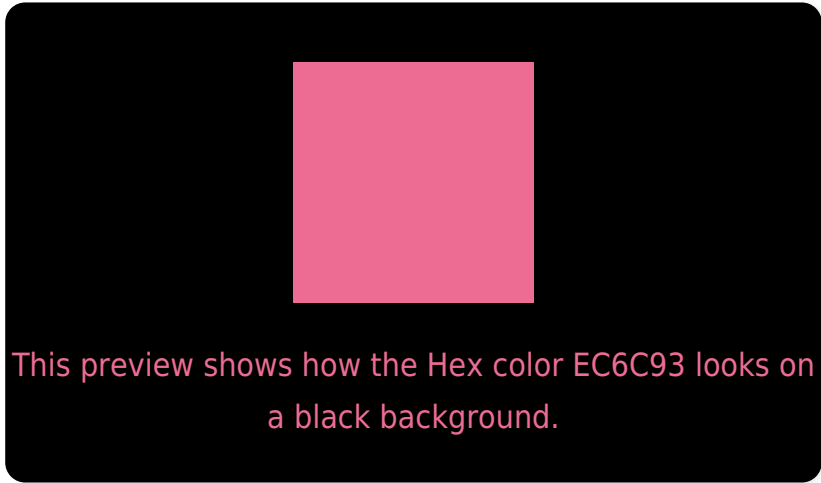
Large Text (above 18pt) WCAG AA × Fail

Any Text WCAG AA × Fail

Large Text (above 18pt) WCAG AAA × Fail

Any Text WCAG AAA × Fail

Black Background



Color Contrast Check

Large Text (above 18pt) WCAG AA ✓ Pass

Any Text WCAG AA ✓ Pass

Large Text (above 18pt) WCAG AAA ✓ Pass

Any Text WCAG AAA ✓ Pass

If you want to check with other color combinations, try the [Color Contrast Checker](#).

Hex EC6C93 Background



This preview shows how black text looks on a background with the Hex color EC6C93.



This preview shows how white text looks on a background with the Hex color EC6C93.

Color Blindness Simulation

Color vision deficiency is a very complex topic, and I could not describe the different causes any better than Wikipedia does, so if you want to learn more, you should check out their [article about color blindness](#).

Dichromacy



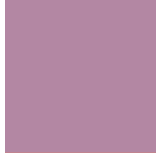


Tritanopia
EA7179

Trichromacy



Original Color
EC6C93



Protanomaly
B387A3



Deuteranomaly
C1848F

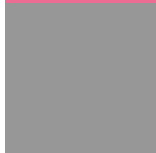


Tritanomaly
EB6F82

Monochromacy



Original Color
EC6C93



Achromatopsia
979797



Achromatomaly
B68796

CSS Examples

Text

The CSS property to change the color of the text to Hex EC6C93 is called "color". The color property can be set on classes, ids or directly on the HTML element.

This example shows how text in the color #EC6C93 looks like.

```
.text, #text, p{  
    color:#EC6C93  
}
```

If you want to add a text shadow in that color use the text-shadow property, you can generate a text shadow directly with our [CSS Text Shadow Generator](#).

Here you see how black text with a 4 pixel #EC6C93 colored shadow looks like.

```
.shadow{ text-shadow: 4px 4px 2px #EC6C93
}
```

Border

The CSS property to change the border of an element to Hex EC6C93 is called "border". The border property can be set on classes, ids or directly on the HTML element.

This example shows the color as border, it can be applied via the CSS property "border" or "border-color".

```
.border, #border, table{ border:4px solid
#EC6C93 }
```

If only the border color should be changed use the property `border-color`.

```
.border{ border-color:#EC6C93 }
```

If you want to add a box shadow in that color use:

Here you see how a box with a 4 pixel #EC6C93 colored shadow looks like.

```
.boxshadow{ -moz-box-shadow:4px 4px 4px  
4px #EC6C93; -webkit-box-shadow:4px 4px  
4px 4px #EC6C93; box-shadow:4px 4px 4px  
4px #EC6C93 }
```

Background

The CSS property to change the background color of an element to Hex EC6C93 is called "background". The background property can be set on classes, ids or directly on the HTML element.

```
.background, #background, body{  
background:#EC6C93 }
```

If only the background color should be changed can be used:

```
.background{ background-color:#EC6C93 }
```

This example shows the color as background, it is applied via the CSS property "background".

To optimize and compress your CSS code, you can use our [online CSS compressor and optimizer](#) based on csstidy. If you want to create a linear or radial gradient as background or border, check our [CSS Gradient Generator](#).

Hey! You found this booklet interesting? Support Converting Colors with the new Membership Option!

The pro membership hides all ads, plus gives you double the colors in the color bucket, and more awesome pro features!

[Learn more, Memberships starting at \\$2.50/m!](#)

**Follow me
on Twitter!**

@ConvertingColor