

Converting Colors

Hex(EC7A89)

Have a look what the booklet for
Hex(EC7A89) contains.

Hex(EC7A89)	3
<i>Conversions</i>	4
<i>Details</i>	6
<i>Harmonies</i>	11
<i>Previews</i>	23
<i>Color Blindness Simulation</i>	26
<i>CSS Examples</i>	29

Color

Hex(EC7A89)

Conversions

Conversions Part 1

Format	Color
Hex	EC7A89
RGB	236, 122, 137
RGB Percent	93%, 48%, 54%
CMY	0.0745, 0.5216, 0.4627
CMYK	0.00, 0.48, 0.42, 0.07
HSL	352°, 75%, 70%
HSV	352°, 48%, 93%
XYZ	46.0670, 33.5581, 27.7163
YIQ	157.7960, 63.1290, 28.8330

Conversions

Conversions Part 2

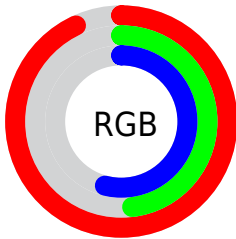
Format	Color
R_{YB}	236, 122, 137
Decimal	15497865
CIE _{Lab}	64.61, 45.30, 12.23
CIE _{LCh}	65, 46.918, 15.111
Yxy	33.5581, 0.4292, 0.3126
Android (android.graphics.Color)	4293687945 (0xFFEC7A89)
YUV	157.7960, -10.2524, 68.5849
Hunter-Lab	57.9293, 40.5717, 12.1833

Details

The Hex color **EC7A89** is a light color, and the websafe version is hex **FF9999**. A complement of this color would be **7AECDD**, and the grayscale version is **9E9E9E**.

A 20% lighter version of the original color is **FFB1BE**, and **B14557** is the 20% darker color. If you saturate the color by 10%, you get **EC6275**, and if you desaturate by 10%, it is **EC929D**.

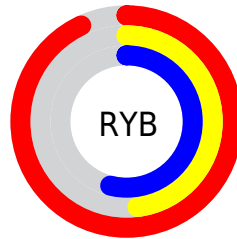
Distribution



Red (93%)

Green (48%)

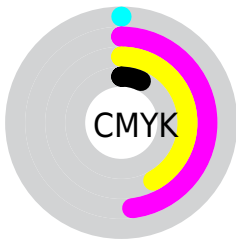
Blue (54%)



Red (93%)

Yellow (48%)

Blue (54%)

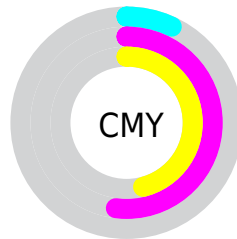


Cyan (0%)

Magenta (48%)

Yellow (42%)

Black (7%)



Cyan (7%)

Magenta (52%)

Yellow (46%)

Brightness & Saturation Gradients

These gradients show how the Hex color EC7A89 changes by changing the brightness by 10 percent. The first figure shows a shift by +10% for each color and the second figure -10%.

Similar to the brightness gradients but the following saturation gradients show a change of the Hex color EC7A89 by changing the saturation by 10% instead.

 EC7A89

 EC7A89

FFFFFF

 CE5F70

 FFB1BE

 B14557

 FFCDDA

 942A40

 FFEAF6

 77092A

 5B0016

 400000

 240001

 000000

 EC7A89

 EC7A89

 EC6275

 EC929D

 EC4B60

 ECA9B2

 EC334C

 ECC1C6

 EC1C37

 ECD8DB

 EC0423

 ECF0EF

 EC001F

 ECFFFF

Harmonies

Analogous

The Analogous color harmony consists of three colors that are next to each other on the color wheel.



E07CB3



EC7A89



E28463

Triad

The Triadic color harmony groups three colors that are evenly spaced from another and form a triangle on the color wheel.



EC7A89



72AB5F



00A7ED

Complementary

The Complementary color scheme is a pair of colors which are on the opposite of each other on the color wheel.



EC7A89



7AECDD

Split Complementary

Split-complementary colors differ from the complementary color scheme. The scheme consists of three colors, the original color and two neighbors of the complement color.



00AFD7



EC7A89



2CB186

Square

The Square scheme is like the rectangle color scheme, but the four colors are evenly spaced on the color wheel.



EC7A89



A1A149



00B2B1



7D9AEE

Rectangle

The Rectangle color scheme consists of four colors that form a rectangle on the color wheel.



EC7A89



D28E51



00B2B1



00AAE8

Sweetspot

The Sweet Spot groups the original color and five complimentary colors.



EC7A89



FFDBE0



DD7AEC



806A6D



000000



808080

Same Dimension

The Same Dimension uses a secret algorithm to generate beautiful new colors.



EC7A89



FF6B7F



ECA47A



756A6B



B50018



360007

Inverse Universe

The Inverse Universe completely reimagines the original color for something new.



EC7A89



FF6B7F



7AC2EC



756A6B



B50018



360007

Previews

White Background



This preview shows how the Hex color EC7A89 looks on a white background.

Color Contrast Check

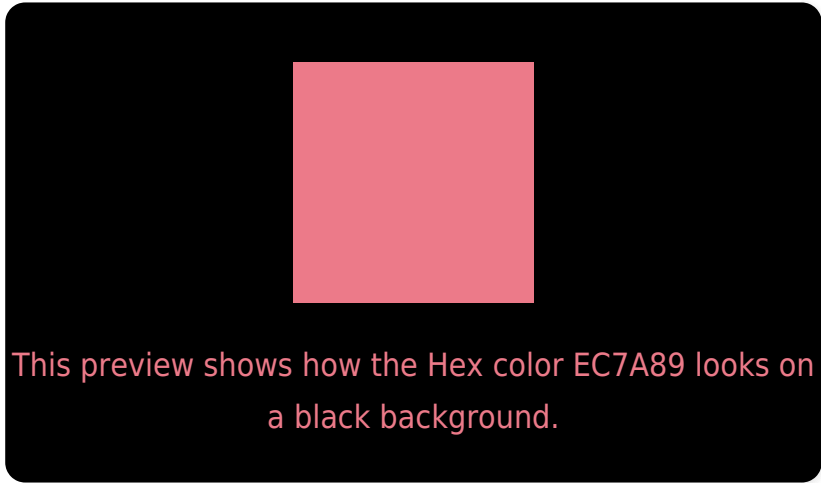
Large Text (above 18pt) WCAG AA × Fail

Any Text WCAG AA × Fail

Large Text (above 18pt) WCAG AAA × Fail

Any Text WCAG AAA × Fail

Black Background



Color Contrast Check

Large Text (above 18pt) WCAG AA ✓ Pass

Any Text WCAG AA ✓ Pass

Large Text (above 18pt) WCAG AAA ✓ Pass

Any Text WCAG AAA ✓ Pass

If you want to check with other color combinations, try the [Color Contrast Checker](#).

Hex EC7A89 Background



This preview shows how black text looks on a background with the Hex color EC7A89.

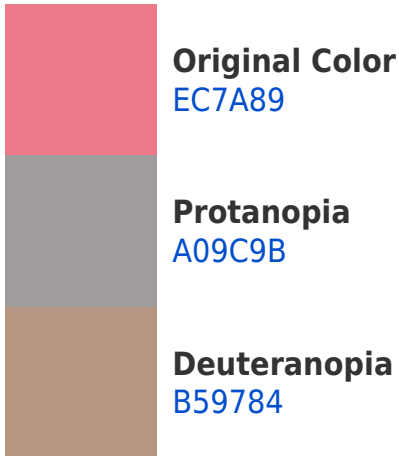


This preview shows how white text looks on a background with the Hex color EC7A89.

Color Blindness Simulation

Color vision deficiency is a very complex topic, and I could not describe the different causes any better than Wikipedia does, so if you want to learn more, you should check out their [article about color blindness](#).

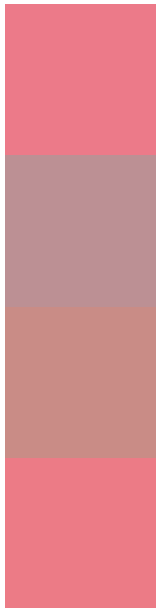
Dichromacy





Tritanopia
EC7B84

Trichromacy



Original Color
EC7A89

Protanomaly
BC9094

Deuteranomaly
C98C86

Tritanomaly
EC7B86

Monochromacy



Original Color
EC7A89

Achromatopsia
9E9E9E

Achromatomaly
BA9196

CSS Examples

Text

The CSS property to change the color of the text to Hex EC7A89 is called "color". The color property can be set on classes, ids or directly on the HTML element.

This example shows how text in the color #EC7A89 looks like.

```
.text, #text, p{  
    color:#EC7A89  
}
```

If you want to add a text shadow in that color use the text-shadow property, you can generate a text shadow directly with our [CSS Text Shadow Generator](#).

Here you see how black text with a 4 pixel #EC7A89 colored shadow looks like.

```
.shadow{ text-shadow: 4px 4px 2px #EC7A89
}
```

Border

The CSS property to change the border of an element to Hex EC7A89 is called "border". The border property can be set on classes, ids or directly on the HTML element.

This example shows the color as border, it can be applied via the CSS property "border" or "border-color".

```
.border, #border, table{ border:4px solid
#EC7A89 }
```

If only the border color should be changed use the property `border-color`.

```
.border{ border-color:#EC7A89 }
```

If you want to add a box shadow in that color use:

Here you see how a box with a 4 pixel #EC7A89 colored shadow looks like.

```
.boxshadow{ -moz-box-shadow:4px 4px 4px  
4px #EC7A89; -webkit-box-shadow:4px 4px  
4px 4px #EC7A89; box-shadow:4px 4px 4px  
4px #EC7A89 }
```

Background

The CSS property to change the background color of an element to Hex EC7A89 is called "background". The background property can be set on classes, ids or directly on the HTML element.

```
.background, #background, body{  
background:#EC7A89 }
```

If only the background color should be changed can be used:

```
.background{ background-color:#EC7A89 }
```

This example shows the color as background, it is applied via the CSS property "background".

To optimize and compress your CSS code, you can use our [online CSS compressor and optimizer](#) based on csstidy. If you want to create a linear or radial gradient as background or border, check our [CSS Gradient Generator](#).

Hey! You found this booklet interesting? Support Converting Colors with the new Membership Option!

The pro membership hides all ads, plus gives you double the colors in the color bucket, and more awesome pro features!

[Learn more, Memberships starting at \\$2.50/m!](#)

**Follow me
on Twitter!**

@ConvertingColor