

Converting Colors

Hex(EC9285)

Have a look what the booklet for
Hex(EC9285) contains.

Hex(EC9285)	3
<i>Conversions</i>	4
<i>Details</i>	6
<i>Harmonies</i>	11
<i>Previews</i>	23
<i>Color Blindness Simulation</i>	26
<i>CSS Examples</i>	29

Color

Hex(EC9285)

Conversions

Conversions Part 1

Format	Color
Hex	EC9285
RGB	236, 146, 133
RGB Percent	93%, 57%, 52%
CMY	0.0745, 0.4275, 0.4784
CMYK	0.00, 0.38, 0.44, 0.07
HSL	8°, 73%, 72%
HSV	8°, 44%, 93%
XYZ	49.1046, 40.0841, 27.3392
YIQ	171.4280, 57.8130, 15.0370

Conversions

Conversions Part 2

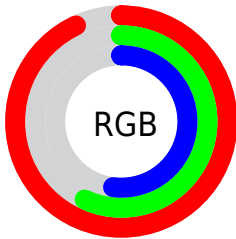
Format	Color
R _Y B	236, 148, 133
Decimal	15504005
CIE Lab	69.53, 32.54, 21.29
CIE LCh	70, 38.888, 33.194
Yxy	40.0841, 0.4214, 0.3440
Android (android.graphics.Color)	4293694085 (0xFFEC9285)
YUV	171.4280, -18.9450, 56.6296
Hunter-Lab	63.3120, 27.6481, 18.7160

Details

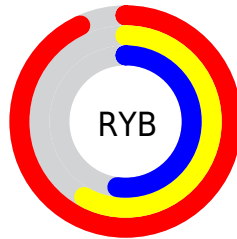
The Hex color **EC9285** is a light color, and the websafe version is hex **FF9999**. A complement of this color would be **85DFEC**, and the grayscale version is **ACACAC**.

A 20% lighter version of the original color is **FFC9BA**, and **B15E53** is the 20% darker color. If you saturate the color by 10%, you get **EC7D6D**, and if you desaturate by 10%, it is **ECA79D**.

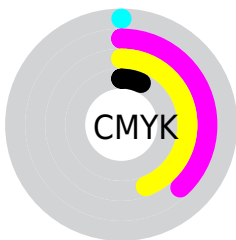
Distribution



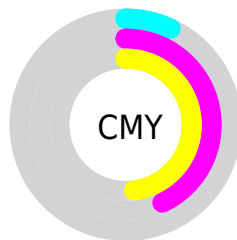
- Red (93%)
- Green (57%)
- Blue (52%)



- Red (93%)
- Yellow (58%)
- Blue (52%)



- Cyan (0%)
- Magenta (38%)
- Yellow (44%)
- Black (7%)



- Cyan (7%)
- Magenta (43%)
- Yellow (48%)

Brightness & Saturation Gradients

These gradients show how the Hex color EC9285 changes by changing the brightness by 10 percent. The first figure shows a shift by +10% for each color and the second figure -10%.

Similar to the brightness gradients but the following saturation gradients show a change of the Hex color EC9285 by changing the saturation by 10% instead.

 EC9285

 EC9285

FFFFFF

 CE786C

 FFC9BA

 B15E53

 FFE5D6

 95453C

 FFFFF2

 782D26

 5D1412

 420000

 2B0001

 000000

 EC9285

 EC9285

 EC7D6D

 ECA79D

 EC6956

 ECBBB4

 EC543E

 ECD0CC

 EC4027

 ECE4E3

 EC2B0F

 ECF9FB

 EC1E00

 ECFFFF

Harmonies

Analogous

The Analogous color harmony consists of three colors that are next to each other on the color wheel.



ED8EA7



EC9285



DB9D6C

Triad

The Triadic color harmony groups three colors that are evenly spaced from another and form a triangle on the color wheel.



EC9285



6DBA89



7CACF0

Complementary

The Complementary color scheme is a pair of colors which are on the opposite of each other on the color wheel.



EC9285



85DFEC

Split Complementary

Split-complementary colors differ from the complementary color scheme. The scheme consists of three colors, the original color and two neighbors of the complement color.



39B6E8



EC9285



39BDAD

Square

The Square scheme is like the rectangle color scheme, but the four colors are evenly spaced on the color wheel.



EC9285



98B36D



00BBCF



B39FE5

Rectangle

The Rectangle color scheme consists of four colors that form a rectangle on the color wheel.



EC9285



C8A563



00BBCF



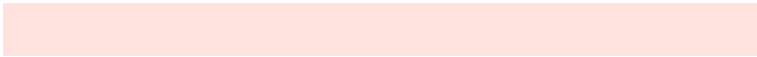
67B0EF

Sweetspot

The Sweet Spot groups the original color and five complimentary colors.



EC9285



FFE2DE



EC85E0



806E6B



000000



808080

Same Dimension

The Same Dimension uses a secret algorithm to generate beautiful new colors.



EC9285



FF8B7A



ECC585



756B6A



B51700



360700

Inverse Universe

The Inverse Universe completely reimagines the original color for something new.



85DFEC



7AEFF



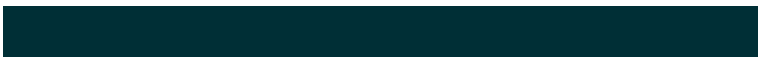
85ACEC



6A7475



009EB5



002F36

Previews

White Background



This preview shows how the Hex color EC9285 looks on a white background.

Color Contrast Check

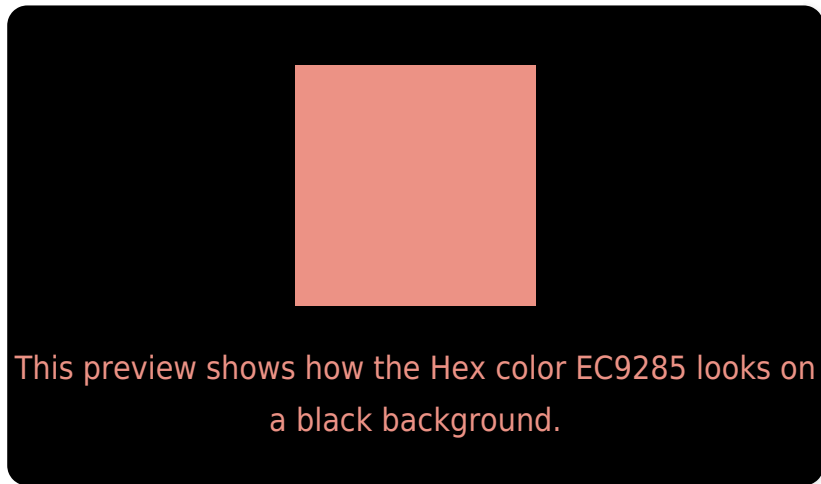
Large Text (above 18pt) WCAG AA × Fail

Any Text WCAG AA × Fail

Large Text (above 18pt) WCAG AAA × Fail

Any Text WCAG AAA × Fail

Black Background



Color Contrast Check

Large Text (above 18pt) WCAG AA ✓ Pass

Any Text WCAG AA ✓ Pass

Large Text (above 18pt) WCAG AAA ✓ Pass

Any Text WCAG AAA ✓ Pass

If you want to check with other color combinations, try the [Color Contrast Checker](#).

Hex EC9285 Background



This preview shows how black text looks on a background with the Hex color EC9285.

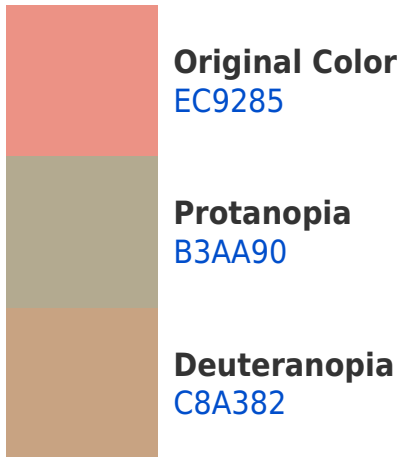


This preview shows how white text looks on a background with the Hex color EC9285.

Color Blindness Simulation

Color vision deficiency is a very complex topic, and I could not describe the different causes any better than Wikipedia does, so if you want to learn more, you should check out their [article about color blindness](#).

Dichromacy



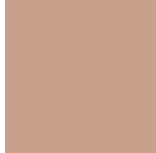


Tritanopia
EE8F9A

Trichromacy



Original Color
EC9285



Protanomaly
C8A18C



Deuteranomaly
D59D83

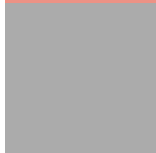


Tritanomaly
ED9092

Monochromacy



Original Color
EC9285



Achromatopsia
ABABAB



Achromatomaly
C3A29D

CSS Examples

Text

The CSS property to change the color of the text to Hex EC9285 is called "color". The color property can be set on classes, ids or directly on the HTML element.

This example shows how text in the color #EC9285 looks like.

```
.text, #text, p{  
    color:#EC9285  
}
```

If you want to add a text shadow in that color use the text-shadow property, you can generate a text shadow directly with our [CSS Text Shadow Generator](#).

Here you see how black text with a 4 pixel #EC9285 colored shadow looks like.

```
.shadow{ text-shadow: 4px 4px 2px #EC9285
}
```

Border

The CSS property to change the border of an element to Hex EC9285 is called "border". The border property can be set on classes, ids or directly on the HTML element.

This example shows the color as border, it can be applied via the CSS property "border" or "border-color".

```
.border, #border, table{ border:4px solid
#EC9285 }
```

If only the border color should be changed use the property `border-color`.

```
.border{ border-color:#EC9285 }
```

If you want to add a box shadow in that color use:

Here you see how a box with a 4 pixel #EC9285 colored shadow looks like.

```
.boxshadow{ -moz-box-shadow:4px 4px 4px  
4px #EC9285; -webkit-box-shadow:4px 4px  
4px 4px #EC9285; box-shadow:4px 4px 4px  
4px #EC9285 }
```

Background

The CSS property to change the background color of an element to Hex EC9285 is called "background". The background property can be set on classes, ids or directly on the HTML element.

```
.background, #background, body{  
background:#EC9285 }
```

If only the background color should be changed can be used:

```
.background{ background-color:#EC9285 }
```

This example shows the color as background, it is applied via the CSS property "background".

To optimize and compress your CSS code, you can use our [online CSS compressor and optimizer](#) based on csstidy. If you want to create a linear or radial gradient as background or border, check our [CSS Gradient Generator](#).

Hey! You found this booklet interesting? Support Converting Colors with the new Membership Option!

The pro membership hides all ads, plus gives you double the colors in the color bucket, and more awesome pro features!

[Learn more, Memberships starting at \\$2.50/m!](#)

**Follow me
on Twitter!**

@ConvertingColor