

Converting Colors

Hex(EC9CAB)

Have a look what the booklet for
Hex(EC9CAB) contains.

Hex(EC9CAB)	3
<i>Conversions</i>	4
<i>Details</i>	6
<i>Harmonies</i>	11
<i>Previews</i>	23
<i>Color Blindness Simulation</i>	26
<i>CSS Examples</i>	29

Color

Hex(EC9CAB)

Conversions

Conversions Part 1

Format	Color
Hex	EC9CAB
RGB	236, 156, 171
RGB Percent	93%, 61%, 67%
CMY	0.0745, 0.3882, 0.3294
CMYK	0.00, 0.34, 0.28, 0.07
HSL	349°, 68%, 77%
HSV	349°, 34%, 93%
XYZ	53.8312, 44.5501, 44.2899
YIQ	181.6300, 42.8650, 21.6250

Conversions

Conversions Part 2

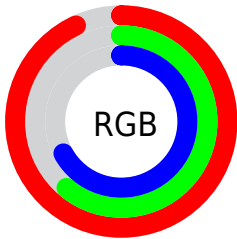
Format	Color
R _Y B	236, 156, 171
Decimal	15506603
CIE Lab	72.59, 31.81, 4.56
CIE LCh	73, 32.136, 8.161
Yxy	44.5501, 0.3773, 0.3123
Android (android.graphics.Color)	4293696683 (0xFFEC9CAB)
YUV	181.6300, -5.2406, 47.6825
Hunter-Lab	66.7458, 27.1569, 7.3796

Details

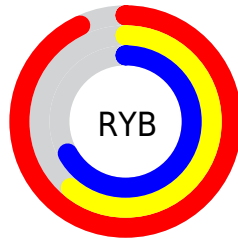
The Hex color **EC9CAB** is a light color, and the websafe version is hex **FF9999**. A complement of this color would be **9CECDD**, and the grayscale version is **B6B6B6**.

A 20% lighter version of the original color is **FFD3E2**, and **B26877** is the 20% darker color. If you saturate the color by 10%, you get **EC8498**, and if you desaturate by 10%, it is **ECB4BE**.

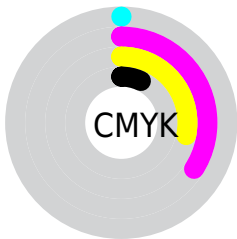
Distribution



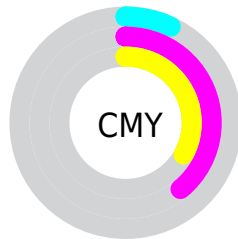
- Red (93%)
- Green (61%)
- Blue (67%)



- Red (93%)
- Yellow (61%)
- Blue (67%)



- Cyan (0%)
- Magenta (34%)
- Yellow (28%)
- Black (7%)



- Cyan (7%)
- Magenta (39%)
- Yellow (33%)

Brightness & Saturation Gradients

These gradients show how the Hex color EC9CAB changes by changing the brightness by 10 percent. The first figure shows a shift by +10% for each color and the second figure -10%.

Similar to the brightness gradients but the following saturation gradients show a change of the Hex color EC9CAB by changing the saturation by 10% instead.

 EC9CAB

 EC9CAB

FFFFFF

 CF8191


 FFD3E2

 B26877

 FFF0FF

 974F5E

 7B3647

 611E30

 47041C

 310000

 000000

 EC9CAB

 EC9CAB

 EC8498

 ECB4BE

 EC6D85

 ECCBD1

 EC5571

 ECE3E5

 EC3E5E

 ECFAF8

 EC264B

 ECFFFF

 EC0E38

 EC002C

Harmonies

Analogous

The Analogous color harmony consists of three colors that are next to each other on the color wheel.



DE9FC9



EC9CAB



EAA08F

Triad

The Triadic color harmony groups three colors that are evenly spaced from another and form a triangle on the color wheel.



EC9CAB



9EBB83



6CBBE8

Complementary

The Complementary color scheme is a pair of colors which are on the opposite of each other on the color wheel.



EC9CAB



9CECDD

Split Complementary

Split-complementary colors differ from the complementary color scheme. The scheme consists of three colors, the original color and two neighbors of the complement color.



52C1D5



EC9CAB



7CC09B

Square

The Square scheme is like the rectangle color scheme, but the four colors are evenly spaced on the color wheel.



EC9CAB



BFB378



5CC2B9



97B2EC

Rectangle

The Rectangle color scheme consists of four colors that form a rectangle on the color wheel.



EC9CAB



E0A681



5CC2B9



60BDE3

Sweetspot

The Sweet Spot groups the original color and five complimentary colors.



EC9CAB



FFE6EA



DC9CEC



807073



000000



808080

Same Dimension

The Same Dimension uses a secret algorithm to generate beautiful new colors.



EC9CAB



FF96AA



ECB49C



756A6C



B50022



36000A

Inverse Universe

The Inverse Universe completely reimagines the original color for something new.



EC9CAB



FF96AA



9CD4EC



756A6C



B50022



36000A

Previews

White Background



This preview shows how the Hex color EC9CAB looks on a white background.

Color Contrast Check

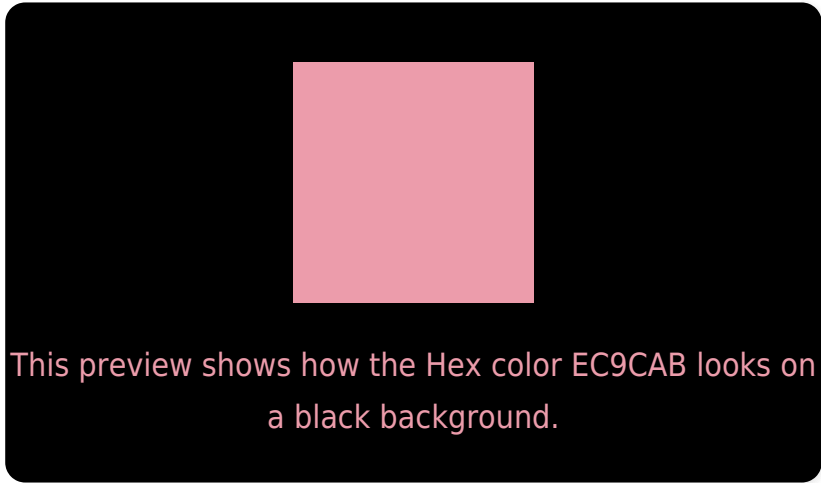
Large Text (above 18pt) WCAG AA × Fail

Any Text WCAG AA × Fail

Large Text (above 18pt) WCAG AAA × Fail

Any Text WCAG AAA × Fail

Black Background



Color Contrast Check

Large Text (above 18pt) WCAG AA ✓ Pass

Any Text WCAG AA ✓ Pass

Large Text (above 18pt) WCAG AAA ✓ Pass

Any Text WCAG AAA ✓ Pass

If you want to check with other color combinations, try the [Color Contrast Checker](#).

Hex EC9CAB Background



This preview shows how black text looks on a background with the Hex color EC9CAB.

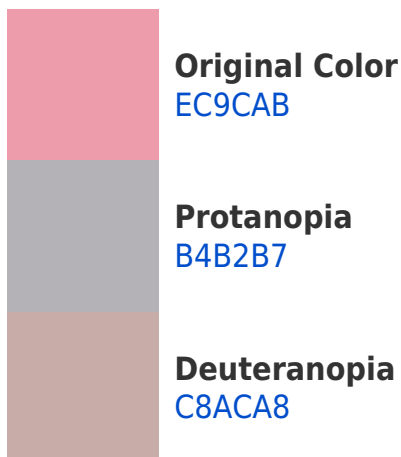


This preview shows how white text looks on a background with the Hex color EC9CAB.

Color Blindness Simulation

Color vision deficiency is a very complex topic, and I could not describe the different causes any better than Wikipedia does, so if you want to learn more, you should check out their [article about color blindness](#).

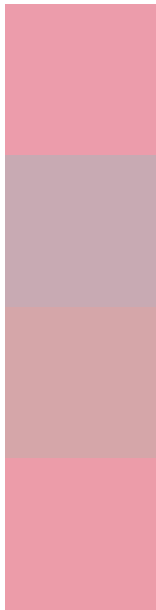
Dichromacy





Tritanopia
EC9CA8

Trichromacy



Original Color
EC9CAB

Protanomaly
C8AAB3

Deuteranomaly
D5A6A9

Tritanomaly
EC9CA9

Monochromacy



Original Color
EC9CAB

Achromatopsia
B6B6B6

Achromatomaly
CAADB2

CSS Examples

Text

The CSS property to change the color of the text to Hex EC9CAB is called "color". The color property can be set on classes, ids or directly on the HTML element.

This example shows how text in the color #EC9CAB looks like.

```
.text, #text, p{  
    color:#EC9CAB  
}
```

If you want to add a text shadow in that color use the text-shadow property, you can generate a text shadow directly with our [CSS Text Shadow Generator](#).

Here you see how black text with a 4 pixel #EC9CAB colored shadow looks like.

```
.shadow{ text-shadow: 4px 4px 2px #EC9CAB
}
```

Border

The CSS property to change the border of an element to Hex EC9CAB is called "border". The border property can be set on classes, ids or directly on the HTML element.

This example shows the color as border, it can be applied via the CSS property "border" or "border-color".

```
.border, #border, table{ border:4px solid
#EC9CAB }
```

If only the border color should be changed use the property `border-color`.

```
.border{ border-color:#EC9CAB }
```

If you want to add a box shadow in that color use:

Here you see how a box with a 4 pixel #EC9CAB colored shadow looks like.

```
.boxshadow{ -moz-box-shadow:4px 4px 4px  
4px #EC9CAB; -webkit-box-shadow:4px 4px  
4px 4px #EC9CAB; box-shadow:4px 4px 4px  
4px #EC9CAB }
```

Background

The CSS property to change the background color of an element to Hex EC9CAB is called "background". The background property can be set on classes, ids or directly on the HTML element.

```
.background, #background, body{  
background:#EC9CAB }
```

If only the background color should be changed can be used:

```
.background{ background-color:#EC9CAB }
```

This example shows the color as background, it is applied via the CSS property "background".

To optimize and compress your CSS code, you can use our [online CSS compressor and optimizer](#) based on csstidy. If you want to create a linear or radial gradient as background or border, check our [CSS Gradient Generator](#).

Hey! You found this booklet interesting? Support Converting Colors with the new Membership Option!

The pro membership hides all ads, plus gives you double the colors in the color bucket, and more awesome pro features!

[Learn more, Memberships starting at \\$2.50/m!](#)

**Follow me
on Twitter!**

@ConvertingColor