

# Converting Colors

Hex(ECACD8)

Have a look what the booklet for  
Hex(ECACD8) contains.

<b>Hex(ECACD8)</b> .....	3
<i><b>Conversions</b></i> .....	4
<i><b>Details</b></i> .....	6
<i><b>Harmonies</b></i> .....	11
<i><b>Previews</b></i> .....	23
<i><b>Color Blindness Simulation</b></i> .....	26
<i><b>CSS Examples</b></i> .....	29

# **Color**

**Hex(ECACD8)**

# Conversions

## Conversions Part 1

<b>Format</b>	<b>Color</b>
Hex	ECACD8
RGB	236, 172, 216
RGB Percent	93%, 67%, 85%
CMY	0.0745, 0.3255, 0.1529
CMYK	0.00, 0.27, 0.08, 0.07
HSL	319°, 63%, 80%
HSV	319°, 27%, 93%
XYZ	61.7393, 52.2958, 71.8058
YIQ	196.1520, 24.0200, 27.2520

# Conversions

## Conversions Part 2

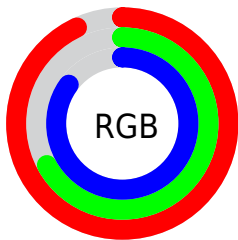
<b>Format</b>	<b>Color</b>
<a href="#">RYB</a>	<a href="#">236, 172, 216</a>
Decimal	<a href="#">15510744</a>
CIELab	<a href="#">77.46, 30.19, -12.95</a>
CIELCh	<a href="#">77, 32.851, 336.779</a>
Yxy	<a href="#">52.2958, 0.3322, 0.2814</a>
Android (android.graphics.Color)	<a href="#">4293700824 (0xFFECACD8)</a>
YUV	<a href="#">196.1520, 9.7851, 34.9467</a>
Hunter-Lab	<a href="#">72.3158, 25.8408, -8.2508</a>

# Details

The Hex color **ECACD8** is a light color, and the websafe version is hex **CC99CC**. A complement of this color would be **ACECC0**, and the grayscale version is **C4C4C4**.

A 20% lighter version of the original color is **FFE4FF**, and **B377A1** is the 20% darker color. If you saturate the color by 10%, you get **EC94D1**, and if you desaturate by 10%, it is **ECC4DF**.

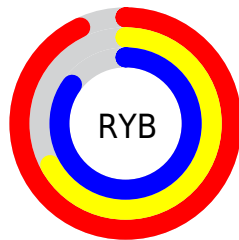
# Distribution



Red (93%)

Green (67%)

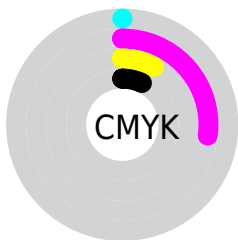
Blue (85%)



Red (93%)

Yellow (67%)

Blue (85%)

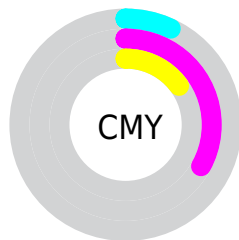


Cyan (0%)

Magenta (27%)

Yellow (8%)

Black (7%)



Cyan (7%)

Magenta (33%)

Yellow (15%)

# Brightness & Saturation Gradients

These gradients show how the Hex color ECACD8 changes by changing the brightness by 10 percent. The first figure shows a shift by +10% for each color and the second figure -10%.

Similar to the brightness gradients but the following saturation gradients show a change of the Hex color ECACD8 by changing the saturation by 10% instead.



 ECACD8

 ECACD8

FFFFFF

 CF91BC

 FFE4FF

 B377A1

 985E87

 7E456E

 642D55

 4B163E

 330028

 1D0013

 000000

 ECACD8

 ECACD8

 EC94D1

 ECC4DF

 EC7DC9

 ECDBE7

 EC65C2

 ECF3EE

 EC4EBB

 ECFFF5

 EC36B3

 ECFFFD

 EC1EAC

 ECFFFF

 EC07A4

 EC00A2

# Harmonies

## Analogous

The Analogous color harmony consists of three colors that are next to each other on the color wheel.



CDB5F0



ECACD8



FBA9B9

# Triad

The Triadic color harmony groups three colors that are evenly spaced from another and form a triangle on the color wheel.



ECACD8



CEC083



5DCFE3

# Complementary

The Complementary color scheme is a pair of colors which are on the opposite of each other on the color wheel.



ECACD8



ACECC0

# Split Complementary

Split-complementary colors differ from the complementary color scheme. The scheme consists of three colors, the original color and two neighbors of the complement color.



69D0C5



ECACD8



ADC88E

# Square

The Square scheme is like the rectangle color scheme, but the four colors are evenly spaced on the color wheel.



ECACD8



E9B588



89CEA6



76C9F7

# Rectangle

The Rectangle color scheme consists of four colors that form a rectangle on the color wheel.



ECACD8



FCAA5



89CEA6



5DD0DA



# Sweetspot

The Sweet Spot groups the original color and five complimentary colors.



ECACD8



FFEBF9



BFACEC



80737C



000000



808080



# Same Dimension

The Same Dimension uses a secret algorithm to generate beautiful new colors.



ECACD8



FFABE5



ECACB9



756A72



B5007C



360025



# Inverse Universe

The Inverse Universe completely reimagines the original color for something new.



ECACD8



FFABE5



ACECDF



756A72



B5007C

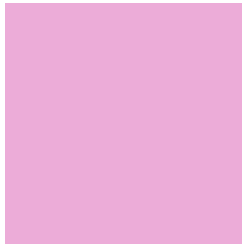


360025



# Previews

## White Background



This preview shows how the Hex color ECACD8 looks on a white background.

## Color Contrast Check

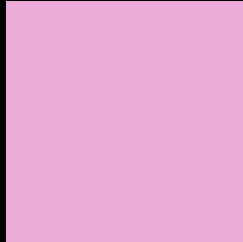
Large Text (above 18pt) WCAG AA × Fail

Any Text WCAG AA × Fail

Large Text (above 18pt) WCAG AAA × Fail

Any Text WCAG AAA × Fail

# Black Background



This preview shows how the Hex color ECACD8 looks on a black background.

## Color Contrast Check

Large Text (above 18pt) WCAG AA ✓ Pass

Any Text WCAG AA ✓ Pass

Large Text (above 18pt) WCAG AAA ✓ Pass

Any Text WCAG AAA ✓ Pass

If you want to check with other color combinations, try the [Color Contrast Checker](#).



## Hex ECACD8 Background



This preview shows how black text looks on a background with the Hex color ECACD8.

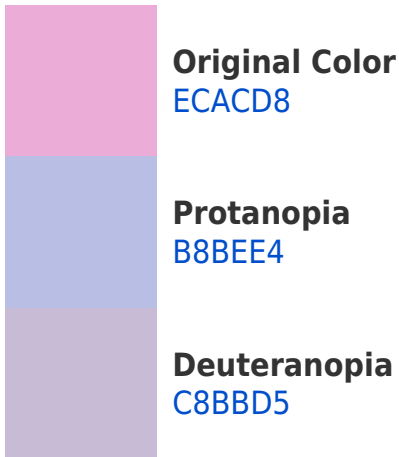


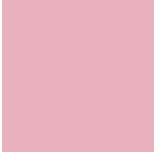
This preview shows how white text looks on a background with the Hex color ECACD8.

# Color Blindness Simulation

Color vision deficiency is a very complex topic, and I could not describe the different causes any better than Wikipedia does, so if you want to learn more, you should check out their [article about color blindness](#).

## Dichromacy





**Tritanopia**  
E9B1BE

# Trichromacy



**Original Color**  
ECACD8



**Protanomaly**  
CBB7E0



**Deuteranomaly**  
D5B6D6

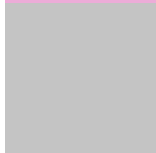


**Tritanomaly**  
EAAFC7

# Monochromacy



**Original Color**  
ECACD8



**Achromatopsia**  
C4C4C4



**Achromatomaly**  
D3BBCB

# CSS Examples

## Text

The CSS property to change the color of the text to Hex ECACD8 is called "color". The color property can be set on classes, ids or directly on the HTML element.

This example shows how text in the color #ECACD8 looks like.

```
.text, #text, p{  
    color:#ECACD8  
}
```

If you want to add a text shadow in that color use the text-shadow property, you can generate a text shadow directly with our [CSS Text Shadow Generator](#).

Here you see how black text with a 4 pixel #ECACD8 colored shadow looks like.

```
.shadow{ text-shadow: 4px 4px 2px #ECACD8
}
```

## Border

The CSS property to change the border of an element to Hex ECACD8 is called "border". The border property can be set on classes, ids or directly on the HTML element.

This example shows the color as border, it can be applied via the CSS property "border" or "border-color".

```
.border, #border, table{ border:4px solid
#ECACD8 }
```

If only the border color should be changed use the property `border-color`.

```
.border{ border-color:#ECACD8 }
```

If you want to add a box shadow in that color use:

Here you see how a box with a 4 pixel #ECACD8 colored shadow looks like.

```
.boxshadow{ -moz-box-shadow:4px 4px 4px  
4px #ECACD8; -webkit-box-shadow:4px 4px  
4px 4px #ECACD8; box-shadow:4px 4px 4px  
4px #ECACD8 }
```

# Background

The CSS property to change the background color of an element to Hex ECACD8 is called "background". The background property can be set on classes, ids or directly on the HTML element.

```
.background, #background, body{  
background:#ECACD8 }
```

If only the background color should be changed can be used:

```
.background{ background-color:#ECACD8 }
```

This example shows the color as background, it is applied via the CSS property "background".

To optimize and compress your CSS code, you can use our [online CSS compressor and optimizer](#) based on csstidy. If you want to create a linear or radial gradient as background or border, check our [CSS Gradient Generator](#).



Hey! You found this booklet interesting? Support Converting Colors with the new Membership Option!

The pro membership hides all ads, plus gives you double the colors in the color bucket, and more awesome pro features!

**[Learn more, Memberships starting at \\$2.50/m!](#)**

**Follow me  
on Twitter!**

@ConvertingColor