

Converting Colors

Hex(ECBFA8)

Have a look what the booklet for
Hex(ECBFA8) contains.

Hex(ECBFA8)	3
<i>Conversions</i>	4
<i>Details</i>	6
<i>Harmonies</i>	11
<i>Previews</i>	23
<i>Color Blindness Simulation</i>	26
<i>CSS Examples</i>	29

Color

Hex(ECBFA8)

Conversions

Conversions Part 1

Format	Color
Hex	ECBFA8
RGB	236, 191, 168
RGB Percent	93%, 75%, 66%
CMY	0.0745, 0.2510, 0.3412
CMYK	0.00, 0.19, 0.29, 0.07
HSL	20°, 64%, 79%
HSV	20°, 29%, 93%
XYZ	60.2908, 57.9216, 45.0481
YIQ	201.8330, 34.2030, 2.3870

Conversions

Conversions Part 2

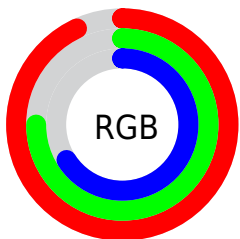
Format	Color
R _Y B	236, 203, 168
Decimal	15515560
CIE Lab	80.70, 12.82, 17.69
CIE LCh	81, 21.845, 54.065
Yxy	57.9216, 0.3693, 0.3548
Android (android.graphics.Color)	4293705640 (0xFFECBFA8)
YUV	201.8330, -16.6797, 29.9645
Hunter-Lab	76.1063, 8.2203, 18.1800

Details

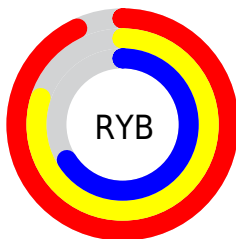
The Hex color **ECBFA8** is a light color, and the websafe version is hex **FFCCCC**. A complement of this color would be **A8D5EC**, and the grayscale version is **CACACA**.

A 20% lighter version of the original color is **FFF7DF**, and **B38A74** is the 20% darker color. If you saturate the color by 10%, you get **ECAF90**, and if you desaturate by 10%, it is **ECCFC0**.

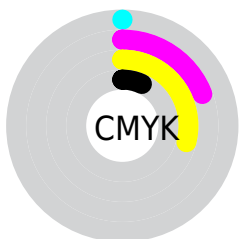
Distribution



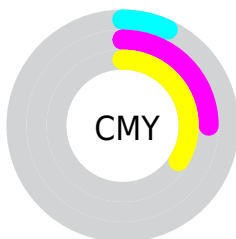
- Red (93%)
- Green (75%)
- Blue (66%)



- Red (93%)
- Yellow (80%)
- Blue (66%)



- Cyan (0%)
- Magenta (19%)
- Yellow (29%)
- Black (7%)



- Cyan (7%)
- Magenta (25%)
- Yellow (34%)

Brightness & Saturation Gradients

These gradients show how the Hex color ECBFA8 changes by changing the brightness by 10 percent. The first figure shows a shift by +10% for each color and the second figure -10%.

Similar to the brightness gradients but the following saturation gradients show a change of the Hex color ECBFA8 by changing the saturation by 10% instead.

 ECBFA8

 ECBFA8

FFFFFF

 CFA48E

 FFF7DF

 B38A74

 FFFFFC

 98705B

 7D5844

 63402D

 4A2A18

 331500

 1C0000

 000000

 ECBFA8

 ECBFA8

 ECAF90

 ECCFC0

 ECA079

 ECDED7

 EC9061

 ECEEEF

 EC814A

 ECFDFE

 EC7132

 ECFEFC

 EC611A

 EC5203

 EC5000

Harmonies

Analogous

The Analogous color harmony consists of three colors that are next to each other on the color wheel.



F3BBB9



ECBFA8



DCC6A0

Triad

The Triadic color harmony groups three colors that are evenly spaced from another and form a triangle on the color wheel.



ECBFA8



9BD4C3



C7C4ED

Complementary

The Complementary color scheme is a pair of colors which are on the opposite of each other on the color wheel.



ECBFA8



A8D5EC

Split Complementary

Split-complementary colors differ from the complementary color scheme. The scheme consists of three colors, the original color and two neighbors of the complement color.



ACCBF0



ECBFA8



91D4D8

Square

The Square scheme is like the rectangle color scheme, but the four colors are evenly spaced on the color wheel.



ECBFA8



AFD1B0



97D1E9



DFBEE0

Rectangle

The Rectangle color scheme consists of four colors that form a rectangle on the color wheel.



ECBFA8



CECAA1



97D1E9



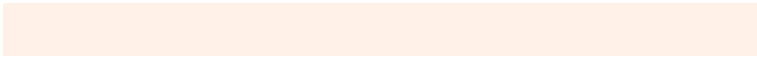
BEC7F0

Sweetspot

The Sweet Spot groups the original color and five complimentary colors.



ECBFA8



FFF0E8



ECA8D5



807671



000000



808080

Same Dimension

The Same Dimension uses a secret algorithm to generate beautiful new colors.



ECBFA8



FFC4A6



ECE1A8



756E6A



B53D00



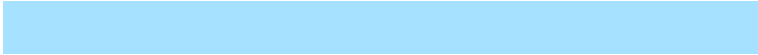
361200

Inverse Universe

The Inverse Universe completely reimagines the original color for something new.



A8D5EC



A6E1FF



A8B3EC



6A7175



0078B5



002336

Previews

White Background



This preview shows how the Hex color ECBFA8 looks on a white background.

Color Contrast Check

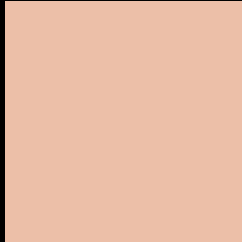
Large Text (above 18pt) WCAG AA × Fail

Any Text WCAG AA × Fail

Large Text (above 18pt) WCAG AAA × Fail

Any Text WCAG AAA × Fail

Black Background



This preview shows how the Hex color ECBFA8 looks on a black background.

Color Contrast Check

Large Text (above 18pt) WCAG AA ✓ Pass

Any Text WCAG AA ✓ Pass

Large Text (above 18pt) WCAG AAA ✓ Pass

Any Text WCAG AAA ✓ Pass

If you want to check with other color combinations, try the [Color Contrast Checker](#).

Hex ECBFA8 Background



This preview shows how black text looks on a background with the Hex color ECBFA8.

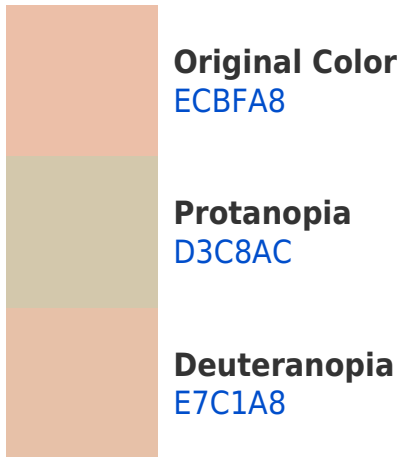


This preview shows how white text looks on a background with the Hex color ECBFA8.

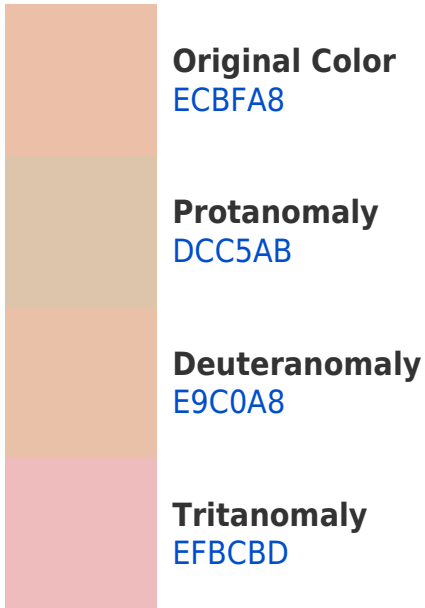
Color Blindness Simulation

Color vision deficiency is a very complex topic, and I could not describe the different causes any better than Wikipedia does, so if you want to learn more, you should check out their [article about color blindness](#).

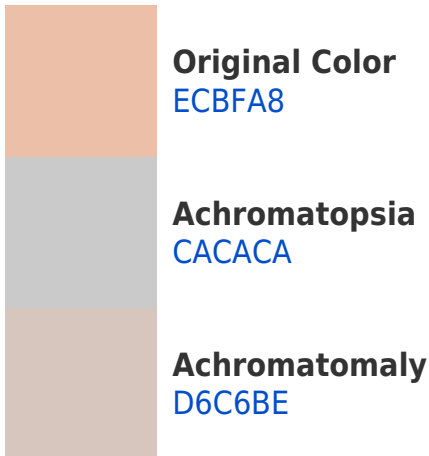
Dichromacy



Trichromacy



Monochromacy



CSS Examples

Text

The CSS property to change the color of the text to Hex ECBFA8 is called "color". The color property can be set on classes, ids or directly on the HTML element.

This example shows how text in the color #ECBFA8 looks like.

```
.text, #text, p{  
    color:#ECBFA8  
}
```

If you want to add a text shadow in that color use the text-shadow property, you can generate a text shadow directly with our [CSS Text Shadow Generator](#).

Here you see how black text with a 4 pixel #ECBFA8 colored shadow looks like.

```
.shadow{ text-shadow: 4px 4px 2px #ECBFA8  
}
```

Border

The CSS property to change the border of an element to Hex ECBFA8 is called "border". The border property can be set on classes, ids or directly on the HTML element.

This example shows the color as border, it can be applied via the CSS property "border" or "border-color".

```
.border, #border, table{ border:4px solid  
#ECBFA8 }
```

If only the border color should be changed use the property `border-color`.

```
.border{ border-color:#ECBFA8 }
```

If you want to add a box shadow in that color use:

Here you see how a box with a 4 pixel #ECBFA8 colored shadow looks like.

```
.boxshadow{ -moz-box-shadow:4px 4px 4px  
4px #ECBFA8; -webkit-box-shadow:4px 4px  
4px 4px #ECBFA8; box-shadow:4px 4px 4px  
4px #ECBFA8 }
```

Background

The CSS property to change the background color of an element to Hex ECBFA8 is called "background". The background property can be set on classes, ids or directly on the HTML element.

```
.background, #background, body{  
background:#ECBFA8 }
```

If only the background color should be changed can be used:

```
.background{ background-color:#ECBFA8 }
```

This example shows the color as background, it is applied via the CSS property "background".

To optimize and compress your CSS code, you can use our [online CSS compressor and optimizer](#) based on csstidy. If you want to create a linear or radial gradient as background or border, check our [CSS Gradient Generator](#).

Hey! You found this booklet interesting? Support Converting Colors with the new Membership Option!

The pro membership hides all ads, plus gives you double the colors in the color bucket, and more awesome pro features!

[Learn more, Memberships starting at \\$2.50/m!](#)

**Follow me
on Twitter!**

@ConvertingColor