

Converting Colors

Hex(ECBFE5)

Have a look what the booklet for
Hex(ECBFE5) contains.

Hex(ECBFE5)	3
<i>Conversions</i>	4
<i>Details</i>	6
<i>Harmonies</i>	11
<i>Previews</i>	23
<i>Color Blindness Simulation</i>	26
<i>CSS Examples</i>	29

Color

Hex(ECBFE5)

Conversions

Conversions Part 1

Format	Color
Hex	ECBFE5
RGB	236, 191, 229
RGB Percent	93%, 75%, 90%
CMY	0.0745, 0.2510, 0.1020
CMYK	0.00, 0.19, 0.03, 0.07
HSL	309°, 54%, 84%
HSV	309°, 19%, 93%
XYZ	67.3657, 60.7516, 82.3044
YIQ	208.7870, 14.6220, 21.3580

Conversions

Conversions Part 2

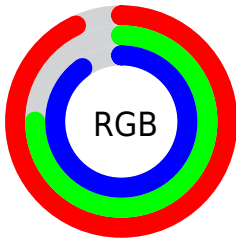
Format	Color
R _{YB}	236, 191, 229
Decimal	15515621
CIE Lab	82.25, 22.33, -12.80
CIE LCh	82, 25.735, 330.176
Yxy	60.7516, 0.3201, 0.2887
Android (android.graphics.Color)	4293705701 (0xFFE0BFE5)
YUV	208.7870, 9.9650, 23.8658
Hunter-Lab	77.9433, 17.8752, -8.0471

Details

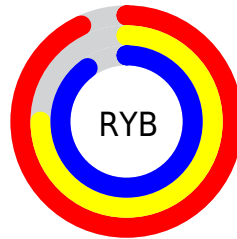
The Hex color **ECBFE5** is a light color, and the websafe version is hex **FFCCFF**. A complement of this color would be **BFEC6**, and the grayscale version is **D1D1D1**.

A 20% lighter version of the original color is **FFF8FF**, and **B489AE** is the 20% darker color. If you saturate the color by 10%, you get **ECA7E1**, and if you desaturate by 10%, it is **ECD7E9**.

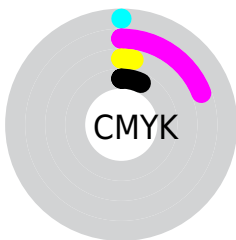
Distribution



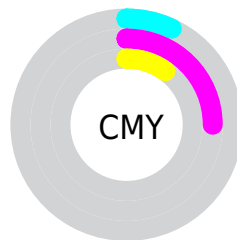
- Red (93%)
- Green (75%)
- Blue (90%)



- Red (93%)
- Yellow (75%)
- Blue (90%)



- Cyan (0%)
- Magenta (19%)
- Yellow (3%)
- Black (7%)



- Cyan (7%)
- Magenta (25%)
- Yellow (10%)

Brightness & Saturation Gradients

These gradients show how the Hex color ECBFE5 changes by changing the brightness by 10 percent. The first figure shows a shift by +10% for each color and the second figure -10%.

Similar to the brightness gradients but the following saturation gradients show a change of the Hex color ECBFE5 by changing the saturation by 10% instead.

 ECBFE5

 ECBFE5

FFFFFF

 D0A4C9

 FFF8FF

 B489AE

 997093

 7E5779

 653F60

 4D2848

 351332

 22001D

 000000

 ECBFE5

 ECBFE5

 ECA7E1

 ECD7E9

 EC90DE

 ECEEEE

 EC78DA

 ECFFF0

 EC61D6

 ECFFF4

 EC49D3

 ECFFF7

 EC31CF

 ECFFFB

 EC1ACB

 ECFFFF

 EC02C8

 EC00C7

Harmonies

Analogous

The Analogous color harmony consists of three colors that are next to each other on the color wheel.



D1C6F6



ECBF5



FCBBCD

Triad

The Triadic color harmony groups three colors that are evenly spaced from another and form a triangle on the color wheel.



ECBFE5



DFCB9C



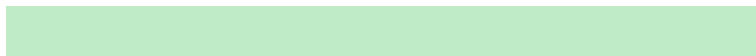
88DAE4

Complementary

The Complementary color scheme is a pair of colors which are on the opposite of each other on the color wheel.



ECBFE5



BFEEC6

Split Complementary

Split-complementary colors differ from the complementary color scheme. The scheme consists of three colors, the original color and two neighbors of the complement color.



92DACC



ECBF E5



C4D2A2

Square

The Square scheme is like the rectangle color scheme, but the four colors are evenly spaced on the color wheel.



ECBFE5



F3C3A4



A9D8B4



94D6F6

Rectangle

The Rectangle color scheme consists of four colors that form a rectangle on the color wheel.



ECBF5



FEBCBD



A9D8B4



89DADC

Sweetspot

The Sweet Spot groups the original color and five complimentary colors.



ECBF5



FFF0FD



C6BFEC



80777E



000000



808080

Same Dimension

The Same Dimension uses a secret algorithm to generate beautiful new colors.



ECBF E5



FFC4 F6



ECBF CF



756A 73



B500 99



3600 2D

Inverse Universe

The Inverse Universe completely reimagines the original color for something new.



ECBF5



FFC4F6



BFECDC



756A73



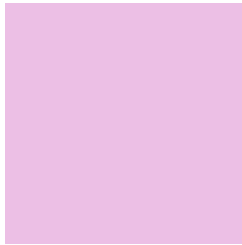
B50099



36002D

Previews

White Background



This preview shows how the Hex color ECBFE5 looks on a white background.

Color Contrast Check

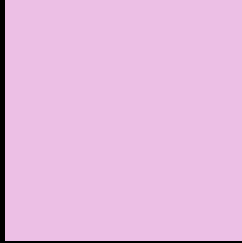
Large Text (above 18pt) WCAG AA × Fail

Any Text WCAG AA × Fail

Large Text (above 18pt) WCAG AAA × Fail

Any Text WCAG AAA × Fail

Black Background



This preview shows how the Hex color ECBFE5 looks on a black background.

Color Contrast Check

Large Text (above 18pt) WCAG AA ✓ Pass

Any Text WCAG AA ✓ Pass

Large Text (above 18pt) WCAG AAA ✓ Pass

Any Text WCAG AAA ✓ Pass

If you want to check with other color combinations, try the [Color Contrast Checker](#).

Hex ECBFE5 Background



This preview shows how black text looks on a background with the Hex color ECBFE5.

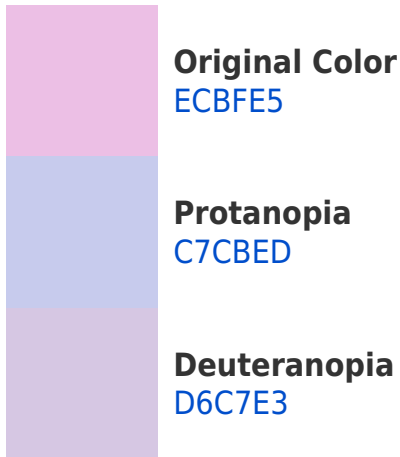


This preview shows how white text looks on a background with the Hex color ECBFE5.

Color Blindness Simulation

Color vision deficiency is a very complex topic, and I could not describe the different causes any better than Wikipedia does, so if you want to learn more, you should check out their [article about color blindness](#).

Dichromacy





Tritanopia
E9C2D2

Trichromacy



Original Color
ECBF E5



Protanomaly
D4C7 E A



Deuteranomaly
DEC4 E 4

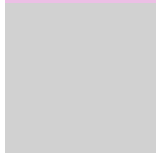


Tritanomaly
EAC1 D 9

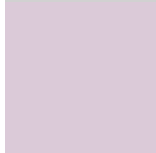
Monochromacy



Original Color
ECBF E5



Achromatopsia
D1D1 D 1



Achromatomaly
DBCAD 8

CSS Examples

Text

The CSS property to change the color of the text to Hex ECBFE5 is called "color". The color property can be set on classes, ids or directly on the HTML element.

This example shows how text in the color #ECBFE5 looks like.

```
.text, #text, p{  
    color:#ECBFE5  
}
```

If you want to add a text shadow in that color use the text-shadow property, you can generate a text shadow directly with our [CSS Text Shadow Generator](#).

Here you see how black text with a 4 pixel #ECBFE5 colored shadow looks like.

```
.shadow{ text-shadow: 4px 4px 2px #ECBFE5 }  
}
```

Border

The CSS property to change the border of an element to Hex ECBFE5 is called "border". The border property can be set on classes, ids or directly on the HTML element.

This example shows the color as border, it can be applied via the CSS property "border" or "border-color".

```
.border, #border, table{ border:4px solid #ECBFE5 }  
}
```

If only the border color should be changed use the property `border-color`.

```
.border{ border-color:#ECBFE5 }
```

If you want to add a box shadow in that color use:

Here you see how a box with a 4 pixel #ECBFE5 colored shadow looks like.

```
.boxshadow{ -moz-box-shadow:4px 4px 4px  
4px #ECBFE5; -webkit-box-shadow:4px 4px  
4px 4px #ECBFE5; box-shadow:4px 4px 4px  
4px #ECBFE5 }
```

Background

The CSS property to change the background color of an element to Hex ECBFE5 is called "background". The background property can be set on classes, ids or directly on the HTML element.

```
.background, #background, body{  
background:#ECBFE5 }
```

If only the background color should be changed can be used:

```
.background{ background-color:#ECBFE5 }
```

This example shows the color as background, it is applied via the CSS property "background".

To optimize and compress your CSS code, you can use our [online CSS compressor and optimizer](#) based on csstidy. If you want to create a linear or radial gradient as background or border, check our [CSS Gradient Generator](#).

Hey! You found this booklet interesting? Support Converting Colors with the new Membership Option!

The pro membership hides all ads, plus gives you double the colors in the color bucket, and more awesome pro features!

[Learn more, Memberships starting at \\$2.50/m!](#)

**Follow me
on Twitter!**

@ConvertingColor