

Converting Colors

Hex(ECCBC3)

Have a look what the booklet for
Hex(ECCBC3) contains.

Hex(ECCBC3)	3
<i>Conversions</i>	4
<i>Details</i>	6
<i>Harmonies</i>	11
<i>Previews</i>	23
<i>Color Blindness Simulation</i>	26
<i>CSS Examples</i>	29

Color

Hex(ECCBC3)

Conversions

Conversions Part 1

Format	Color
Hex	ECCBC3
RGB	236, 203, 195
RGB Percent	93%, 80%, 76%
CMY	0.0745, 0.2039, 0.2353
CMYK	0.00, 0.14, 0.17, 0.07
HSL	12°, 52%, 85%
HSV	12°, 17%, 93%
XYZ	65.7983, 64.4849, 60.6086
YIQ	211.9550, 22.2360, 4.5080

Conversions

Conversions Part 2

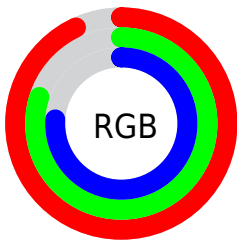
Format	Color
R _Y B	236, 205, 195
Decimal	15518659
CIE Lab	84.22, 10.34, 8.27
CIE LCh	84, 13.239, 38.647
Yxy	64.4849, 0.3447, 0.3378
Android (android.graphics.Color)	4293708739 (0xFFECCBC3)
YUV	211.9550, -8.3588, 21.0875
Hunter-Lab	80.3025, 5.7302, 11.4623

Details

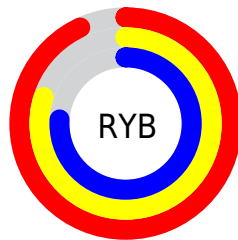
The Hex color **ECCBC3** is a light color, and the websafe version is hex **FFCCCC**. A complement of this color would be **C3E4EC**, and the grayscale version is **D4D4D4**.

A 20% lighter version of the original color is **FFFFFFC**, and **B4958D** is the 20% darker color. If you saturate the color by 10%, you get **ECB8AB**, and if you desaturate by 10%, it is **ECDEDB**.

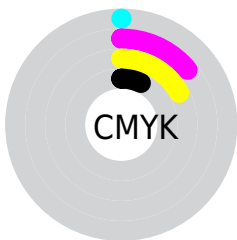
Distribution



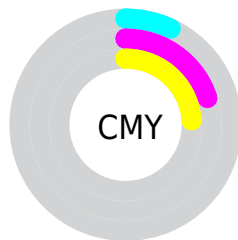
- Red (93%)
- Green (80%)
- Blue (76%)



- Red (93%)
- Yellow (80%)
- Blue (76%)



- Cyan (0%)
- Magenta (14%)
- Yellow (17%)
- Black (7%)



- Cyan (7%)
- Magenta (20%)
- Yellow (24%)

Brightness & Saturation Gradients

These gradients show how the Hex color ECCBC3 changes by changing the brightness by 10 percent. The first figure shows a shift by +10% for each color and the second figure -10%.

Similar to the brightness gradients but the following saturation gradients show a change of the Hex color ECCBC3 by changing the saturation by 10% instead.

 ECCBC3

 ECCBC3

FFFFFFF

 D0B0A8

FFFFFFC

 B4958D

 997B74

 7E625B

 654A44

 4C342E

 351E19

 210700

 000000

 ECCBC3

 ECCBC3

 ECB8AB

 ECDEDB

 ECA594

 ECF1F2

 EC927C

 ECFFFF

 EC7F65

 EC6C4D

 EC5935

 EC461E

 EC3306

 EC2E00

Harmonies

Analogous

The Analogous color harmony consists of three colors that are next to each other on the color wheel.



EDCACF



ECCBC3



E5CEBB

Triad

The Triadic color harmony groups three colors that are evenly spaced from another and form a triangle on the color wheel.



ECCBC3



BDD9C9



C9D2EB

Complementary

The Complementary color scheme is a pair of colors which are on the opposite of each other on the color wheel.



ECCBC3



C3E4EC

Split Complementary

Split-complementary colors differ from the complementary color scheme. The scheme consists of three colors, the original color and two neighbors of the complement color.



BBD6E9



ECCBC3



B4DAD5

Square

The Square scheme is like the rectangle color scheme, but the four colors are evenly spaced on the color wheel.



ECCBC3



CAD6BE



B3D9E1



D9CEE6

Rectangle

The Rectangle color scheme consists of four colors that form a rectangle on the color wheel.



ECCBC3



DDD1B9



B3D9E1



C4D3EB

Sweetspot

The Sweet Spot groups the original color and five complimentary colors.



ECCBC3



FFF5F2



ECC3E4



807978



000000



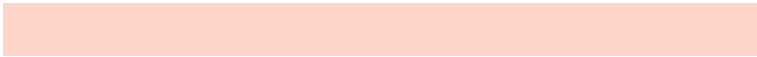
808080

Same Dimension

The Same Dimension uses a secret algorithm to generate beautiful new colors.



ECCBC3



FFD4C9



ECDFC3



756C6A



B52300



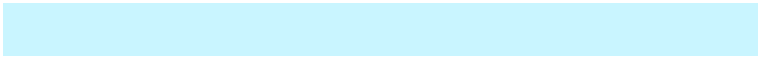
360A00

Inverse Universe

The Inverse Universe completely reimagines the original color for something new.



C3E4EC



C9F5FF



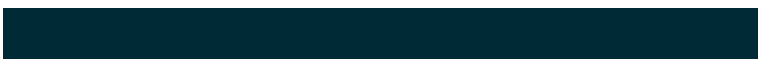
C3D0EC



6A7375



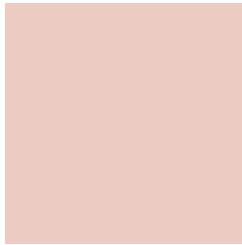
0092B5



002B36

Previews

White Background



This preview shows how the Hex color ECCBC3 looks on a white background.

Color Contrast Check

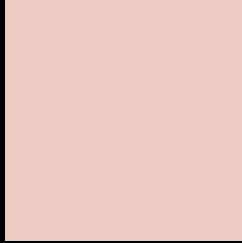
Large Text (above 18pt) WCAG AA × Fail

Any Text WCAG AA × Fail

Large Text (above 18pt) WCAG AAA × Fail

Any Text WCAG AAA × Fail

Black Background



This preview shows how the Hex color ECCBC3 looks on a black background.

Color Contrast Check

Large Text (above 18pt) WCAG AA ✓ Pass

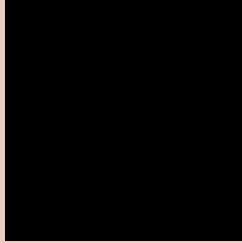
Any Text WCAG AA ✓ Pass

Large Text (above 18pt) WCAG AAA ✓ Pass

Any Text WCAG AAA ✓ Pass

If you want to check with other color combinations, try the [Color Contrast Checker](#).

Hex ECCBC3 Background



This preview shows how black text looks on a background with the Hex color ECCBC3.

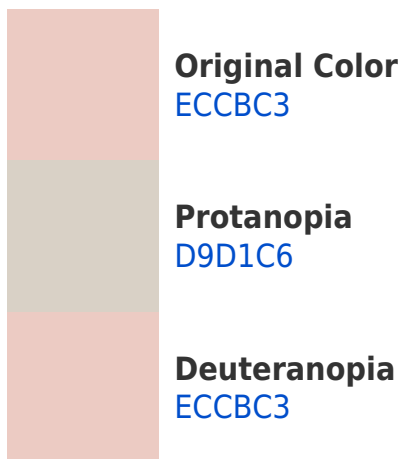


This preview shows how white text looks on a background with the Hex color ECCBC3.

Color Blindness Simulation

Color vision deficiency is a very complex topic, and I could not describe the different causes any better than Wikipedia does, so if you want to learn more, you should check out their [article about color blindness](#).

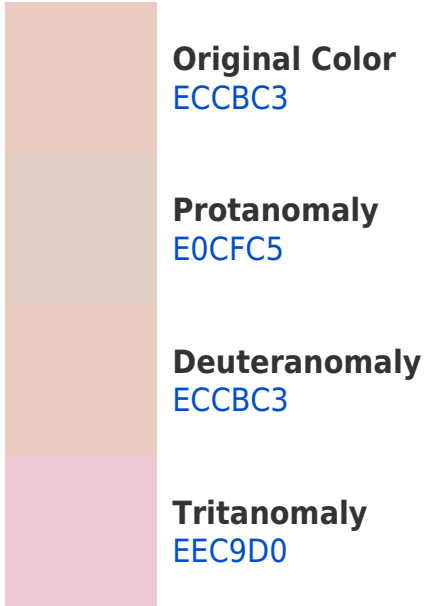
Dichromacy



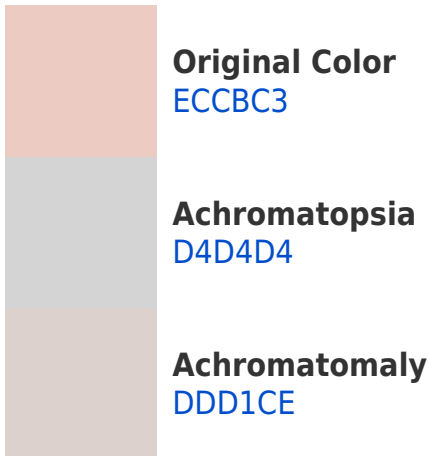


Tritanopia
EFC8D7

Trichromacy



Monochromacy



CSS Examples

Text

The CSS property to change the color of the text to Hex ECCBC3 is called "color". The color property can be set on classes, ids or directly on the HTML element.

This example shows how text in the color #ECCBC3 looks like.

```
.text, #text, p{  
    color:#ECCBC3  
}
```

If you want to add a text shadow in that color use the text-shadow property, you can generate a text shadow directly with our [CSS Text Shadow Generator](#).

Here you see how black text with a 4 pixel #ECCBC3 colored shadow looks like.

```
.shadow{ text-shadow: 4px 4px 2px #ECCBC3  
}
```

Border

The CSS property to change the border of an element to Hex ECCBC3 is called "border". The border property can be set on classes, ids or directly on the HTML element.

This example shows the color as border, it can be applied via the CSS property "border" or "border-color".

```
.border, #border, table{ border:4px solid  
#ECCBC3 }
```

If only the border color should be changed use the property `border-color`.

```
.border{ border-color:#ECCBC3 }
```

If you want to add a box shadow in that color use:

Here you see how a box with a 4 pixel #ECCBC3 colored shadow looks like.

```
.boxshadow{ -moz-box-shadow:4px 4px 4px  
4px #ECCBC3; -webkit-box-shadow:4px 4px  
4px 4px #ECCBC3; box-shadow:4px 4px 4px  
4px #ECCBC3 }
```

Background

The CSS property to change the background color of an element to Hex ECCBC3 is called "background". The background property can be set on classes, ids or directly on the HTML element.

```
.background, #background, body{  
background:#ECCBC3 }
```

If only the background color should be changed can be used:

```
.background{ background-color:#ECCBC3 }
```

This example shows the color as background, it is applied via the CSS property "background".

To optimize and compress your CSS code, you can use our [online CSS compressor and optimizer](#) based on csstidy. If you want to create a linear or radial gradient as background or border, check our [CSS Gradient Generator](#).

Hey! You found this booklet interesting? Support Converting Colors with the new Membership Option!

The pro membership hides all ads, plus gives you double the colors in the color bucket, and more awesome pro features!

[Learn more, Memberships starting at \\$2.50/m!](#)

**Follow me
on Twitter!**

@ConvertingColor