

Converting Colors

Hex(ECD5CF)

Have a look what the booklet for
Hex(ECD5CF) contains.

Hex(ECD5CF)	3
<i>Conversions</i>	4
<i>Details</i>	6
<i>Harmonies</i>	11
<i>Previews</i>	23
<i>Color Blindness Simulation</i>	26
<i>CSS Examples</i>	29

Color

Hex(ECD5CF)

Conversions

Conversions Part 1

Format	Color
Hex	ECD5CF
RGB	236, 213, 207
RGB Percent	93%, 84%, 81%
CMY	0.0745, 0.1647, 0.1882
CMYK	0.00, 0.10, 0.12, 0.07
HSL	12°, 43%, 87%
HSV	12°, 12%, 93%
XYZ	69.6488, 69.9264, 68.8577
YIQ	219.1930, 15.6340, 3.0100

Conversions

Conversions Part 2

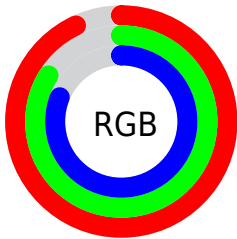
Format	Color
R _Y B	236, 215, 207
Decimal	15521231
CIE Lab	86.96, 6.98, 5.85
CIE LCh	87, 9.107, 39.957
Yxy	69.9264, 0.3342, 0.3355
Android (android.graphics.Color)	4293711311 (0xFFECD5CF)
YUV	219.1930, -6.0111, 14.7397
Hunter-Lab	83.6220, 2.3343, 9.7136

Details

The Hex color **ECD5CF** is a light color, and the websafe version is hex **CCCCCC**. A complement of this color would be **CFE6EC**, and the grayscale version is **DBDBDB**.

A 20% lighter version of the original color is **FFFFFF**, and **B49E99** is the 20% darker color. If you saturate the color by 10%, you get **ECC2B7**, and if you desaturate by 10%, it is **ECE8E7**.

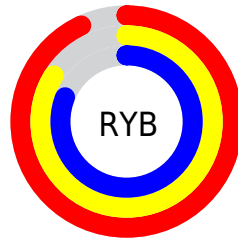
Distribution



Red (93%)

Green (84%)

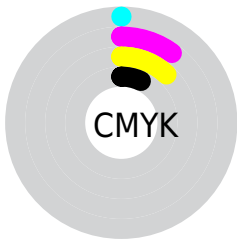
Blue (81%)



Red (93%)

Yellow (84%)

Blue (81%)

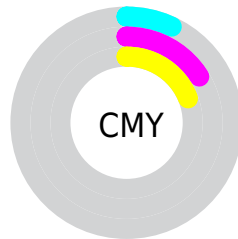


Cyan (0%)

Magenta (10%)

Yellow (12%)

Black (7%)



Cyan (7%)

Magenta (16%)

Yellow (19%)

Brightness & Saturation Gradients

These gradients show how the Hex color ECD5CF changes by changing the brightness by 10 percent. The first figure shows a shift by +10% for each color and the second figure -10%.

Similar to the brightness gradients but the following saturation gradients show a change of the Hex color ECD5CF by changing the saturation by 10% instead.

 ECD5CF

 ECD5CF

FFFFFF

 D0B9B3

 B49E99


 99847F

 7F6B66

 66534E

 4E3C37

 362622

 21120B

 000000

 ECD5CF

 ECD5CF

 ECC2B7

 ECE8E7

 ECB0A0

 ECFAFE

 EC9D88

 ECFFFF

 EC8A71

 EC7759

 EC6541

 EC522A

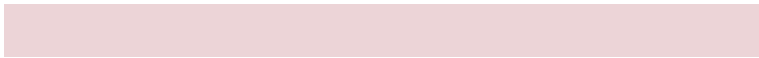
 EC3F12

 EC3100

Harmonies

Analogous

The Analogous color harmony consists of three colors that are next to each other on the color wheel.



ECD4D7



ECD5CF



E7D7CA

Triad

The Triadic color harmony groups three colors that are evenly spaced from another and form a triangle on the color wheel.



ECD5CF



CBDFD4



D4D9EB

Complementary

The Complementary color scheme is a pair of colors which are on the opposite of each other on the color wheel.



ECD5CF



CFE6EC

Split Complementary

Split-complementary colors differ from the complementary color scheme. The scheme consists of three colors, the original color and two neighbors of the complement color.



CBDCEA



ECD5CF



C5DFDC

Square

The Square scheme is like the rectangle color scheme, but the four colors are evenly spaced on the color wheel.



ECD5CF



D4DDCC



C5DEE4



DFD7E7

Rectangle

The Rectangle color scheme consists of four colors that form a rectangle on the color wheel.



ECD5CF



E1D9C9



C5DEE4



D1DAEB

Sweetspot

The Sweet Spot groups the original color and five complimentary colors.



ECD5CF



FFF7F5



ECCFE6



807A79



000000



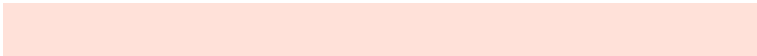
808080

Same Dimension

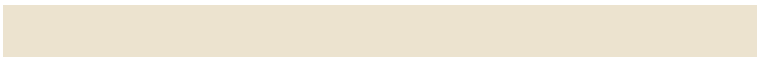
The Same Dimension uses a secret algorithm to generate beautiful new colors.



ECD5CF



FFE1D9



ECE3CF



756C6A



B52500



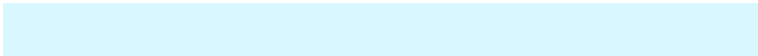
360B00

Inverse Universe

The Inverse Universe completely reimagines the original color for something new.



CFE6EC



D9F7FF



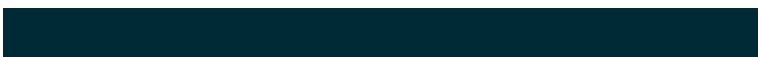
CFD8EC



6A7375



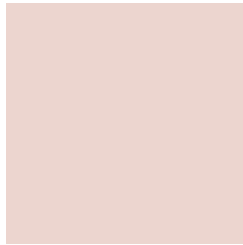
0090B5



002A36

Previews

White Background



This preview shows how the Hex color ECD5CF looks on a white background.

Color Contrast Check

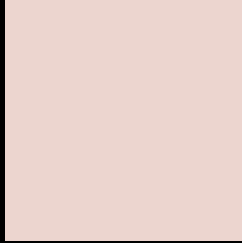
Large Text (above 18pt) WCAG AA × Fail

Any Text WCAG AA × Fail

Large Text (above 18pt) WCAG AAA × Fail

Any Text WCAG AAA × Fail

Black Background



This preview shows how the Hex color ECD5CF looks on a black background.

Color Contrast Check

Large Text (above 18pt) WCAG AA ✓ Pass

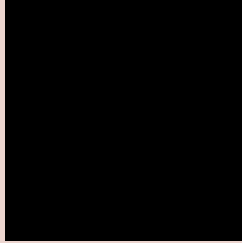
Any Text WCAG AA ✓ Pass

Large Text (above 18pt) WCAG AAA ✓ Pass

Any Text WCAG AAA ✓ Pass

If you want to check with other color combinations, try the [Color Contrast Checker](#).

Hex ECD5CF Background



This preview shows how black text looks on a background with the Hex color ECD5CF.

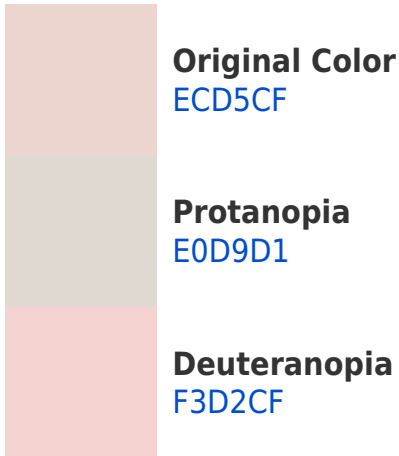


This preview shows how white text looks on a background with the Hex color ECD5CF.

Color Blindness Simulation

Color vision deficiency is a very complex topic, and I could not describe the different causes any better than Wikipedia does, so if you want to learn more, you should check out their [article about color blindness](#).

Dichromacy



Trichromacy



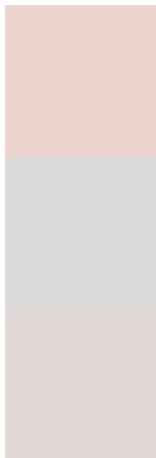
Original Color
ECD5CF

Protanomaly
E4D8D0

Deuteranomaly
F0D3CF

Tritanomaly
EED3DB

Monochromacy



Original Color
ECD5CF

Achromatopsia
DBDBDB

Achromatomaly
E1D9D7

CSS Examples

Text

The CSS property to change the color of the text to Hex ECD5CF is called "color". The color property can be set on classes, ids or directly on the HTML element.

This example shows how text in the color #ECD5CF looks like.

```
.text, #text, p{  
    color:#ECD5CF  
}
```

If you want to add a text shadow in that color use the text-shadow property, you can generate a text shadow directly with our [CSS Text Shadow Generator](#).

Here you see how black text with a 4 pixel #ECD5CF colored shadow looks like.

```
.shadow{ text-shadow: 4px 4px 2px #ECD5CF
}
```

Border

The CSS property to change the border of an element to Hex ECD5CF is called "border". The border property can be set on classes, ids or directly on the HTML element.

This example shows the color as border, it can be applied via the CSS property "border" or "border-color".

```
.border, #border, table{ border:4px solid
#ECD5CF }
```

If only the border color should be changed use the property `border-color`.

```
.border{ border-color:#ECD5CF }
```

If you want to add a box shadow in that color use:

Here you see how a box with a 4 pixel #ECD5CF colored shadow looks like.

```
.boxshadow{ -moz-box-shadow:4px 4px 4px  
4px #ECD5CF; -webkit-box-shadow:4px 4px  
4px 4px #ECD5CF; box-shadow:4px 4px 4px  
4px #ECD5CF }
```

Background

The CSS property to change the background color of an element to Hex ECD5CF is called "background". The background property can be set on classes, ids or directly on the HTML element.

```
.background, #background, body{  
background:#ECD5CF }
```

If only the background color should be changed can be used:

```
.background{ background-color:#ECD5CF }
```

This example shows the color as background, it is applied via the CSS property "background".

To optimize and compress your CSS code, you can use our [online CSS compressor and optimizer](#) based on csstidy. If you want to create a linear or radial gradient as background or border, check our [CSS Gradient Generator](#).

Hey! You found this booklet interesting? Support Converting Colors with the new Membership Option!

The pro membership hides all ads, plus gives you double the colors in the color bucket, and more awesome pro features!

[Learn more, Memberships starting at \\$2.50/m!](#)

**Follow me
on Twitter!**

@ConvertingColor