

Converting Colors

Hex(ECD7D7)

Have a look what the booklet for
Hex(ECD7D7) contains.

Hex(ECD7D7)	3
<i>Conversions</i>	4
<i>Details</i>	6
<i>Harmonies</i>	11
<i>Previews</i>	23
<i>Color Blindness Simulation</i>	26
<i>CSS Examples</i>	29

Color

Hex(ECD7D7)

Conversions

Conversions Part 1

Format	Color
Hex	ECD7D7
RGB	236, 215, 215
RGB Percent	93%, 84%, 84%
CMY	0.0745, 0.1569, 0.1569
CMYK	0.00, 0.09, 0.09, 0.07
HSL	0°, 36%, 88%
HSV	0°, 9%, 93%
XYZ	71.1583, 71.3400, 74.3095
YIQ	221.2790, 12.5160, 4.4520

Conversions

Conversions Part 2

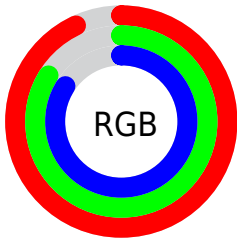
Format	Color
R _Y B	236, 215, 215
Decimal	15521751
CIE Lab	87.65, 7.24, 2.62
CIE LCh	88, 7.703, 19.892
Yxy	71.3400, 0.3282, 0.3290
Android (android.graphics.Color)	4293711831 (0xFFECD7D7)
YUV	221.2790, -3.0955, 12.9103
Hunter-Lab	84.4630, 2.5720, 6.9615

Details

The Hex color **ECD7D7** is a light color, and the websafe version is hex **CCCCCC**. A complement of this color would be **D7ECEC**, and the grayscale version is **DDDDDD**.

A 20% lighter version of the original color is **FFFFFF**, and **B4A0A0** is the 20% darker color. If you saturate the color by 10%, you get **ECBFBF**, and if you desaturate by 10%, it is **ECEFEF**.

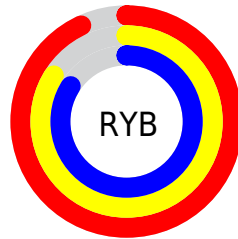
Distribution



Red (93%)

Green (84%)

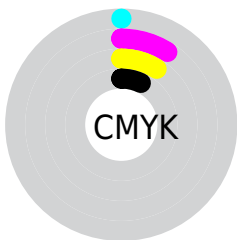
Blue (84%)



Red (93%)

Yellow (84%)

Blue (84%)

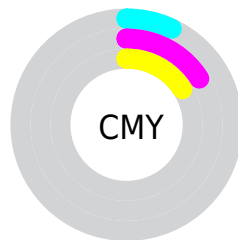


Cyan (0%)

Magenta (9%)

Yellow (9%)

Black (7%)



Cyan (7%)

Magenta (16%)

Yellow (16%)

Brightness & Saturation Gradients

These gradients show how the Hex color ECD7D7 changes by changing the brightness by 10 percent. The first figure shows a shift by +10% for each color and the second figure -10%.

Similar to the brightness gradients but the following saturation gradients show a change of the Hex color ECD7D7 by changing the saturation by 10% instead.

 ECD7D7

FFFFFF

 ECD7D7

 D0BBBB

 B4A0A0

 998686

 7F6D6D

 665455

 4E3D3E

 372728

 211313

 000000

 ECD7D7

 ECD7D7

 ECBFBF

 ECFEF

 ECA8A8

 ECFFFF

 EC9090

 EC7979

 EC6161

 EC4949

 EC3232

 EC1A1A

 EC0303

Harmonies

Analogous

The Analogous color harmony consists of three colors that are next to each other on the color wheel.



E9D7DE



ECD7D7



EAD8D1

Triad

The Triadic color harmony groups three colors that are evenly spaced from another and form a triangle on the color wheel.



ECD7D7



D4DFD2



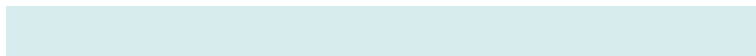
D2DDEA

Complementary

The Complementary color scheme is a pair of colors which are on the opposite of each other on the color wheel.



ECD7D7



D7ECEC

Split Complementary

Split-complementary colors differ from the complementary color scheme. The scheme consists of three colors, the original color and two neighbors of the complement color.



CCDFE7



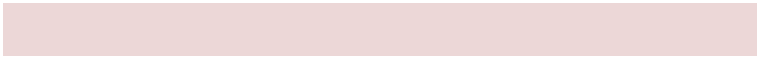
ECD7D7



CDE0D9

Square

The Square scheme is like the rectangle color scheme, but the four colors are evenly spaced on the color wheel.



ECD7D7



DDDDCE



CAE0E0



DADBE9

Rectangle

The Rectangle color scheme consists of four colors that form a rectangle on the color wheel.



ECD7D7



E7DACE



CAE0E0



CFDEE9

Sweetspot

The Sweet Spot groups the original color and five complimentary colors.



ECD7D7



FFF7F7



ECD7EC



807A7A



000000



808080

Same Dimension

The Same Dimension uses a secret algorithm to generate beautiful new colors.



ECD7D7



FFE3E3



ECE2D7



756A6A



B50000



360000

Inverse Universe

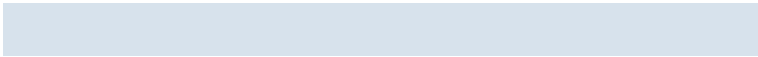
The Inverse Universe completely reimagines the original color for something new.



D7ECEC



E3FFFF



D7E2EC



6A7575



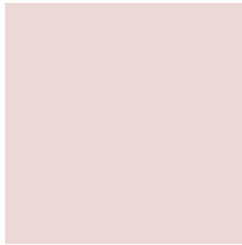
00B5B5



003636

Previews

White Background



This preview shows how the Hex color ECD7D7 looks on a white background.

Color Contrast Check

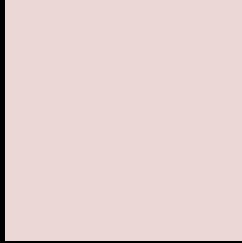
Large Text (above 18pt) WCAG AA × Fail

Any Text WCAG AA × Fail

Large Text (above 18pt) WCAG AAA × Fail

Any Text WCAG AAA × Fail

Black Background



This preview shows how the Hex color ECD7D7 looks on a black background.

Color Contrast Check

Large Text (above 18pt) WCAG AA ✓ Pass

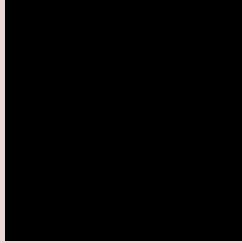
Any Text WCAG AA ✓ Pass

Large Text (above 18pt) WCAG AAA ✓ Pass

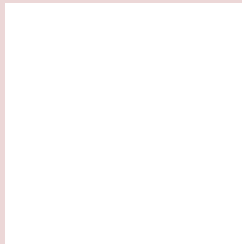
Any Text WCAG AAA ✓ Pass

If you want to check with other color combinations, try the [Color Contrast Checker](#).

Hex ECD7D7 Background



This preview shows how black text looks on a background with the Hex color ECD7D7.

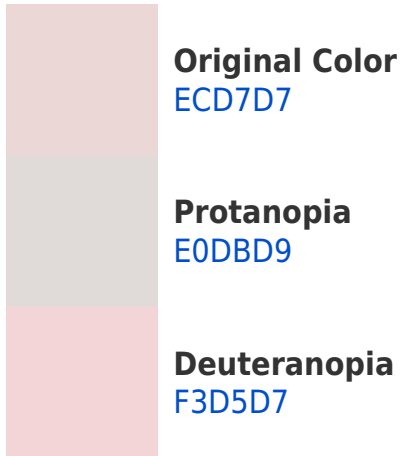


This preview shows how white text looks on a background with the Hex color ECD7D7.

Color Blindness Simulation

Color vision deficiency is a very complex topic, and I could not describe the different causes any better than Wikipedia does, so if you want to learn more, you should check out their [article about color blindness](#).

Dichromacy



Trichromacy



Original Color
ECD7D7

Protanomaly
E4DAD8

Deuteranomaly
F0D6D7

Tritanomaly
EED6E0

Monochromacy



Original Color
ECD7D7

Achromatopsia
DDDDDD

Achromatomaly
E2DBDB

CSS Examples

Text

The CSS property to change the color of the text to Hex ECD7D7 is called "color". The color property can be set on classes, ids or directly on the HTML element.

This example shows how text in the color #ECD7D7 looks like.

```
.text, #text, p{  
    color:#ECD7D7  
}
```

If you want to add a text shadow in that color use the text-shadow property, you can generate a text shadow directly with our [CSS Text Shadow Generator](#).

Here you see how black text with a 4 pixel #ECD7D7 colored shadow looks like.

```
.shadow{ text-shadow: 4px 4px 2px #ECD7D7
}
```

Border

The CSS property to change the border of an element to Hex ECD7D7 is called "border". The border property can be set on classes, ids or directly on the HTML element.

This example shows the color as border, it can be applied via the CSS property "border" or "border-color".

```
.border, #border, table{ border:4px solid
#ECD7D7 }
```

If only the border color should be changed use the property `border-color`.

```
.border{ border-color:#ECD7D7 }
```

If you want to add a box shadow in that color use:

Here you see how a box with a 4 pixel #ECD7D7 colored shadow looks like.

```
.boxshadow{ -moz-box-shadow:4px 4px 4px  
4px #ECD7D7; -webkit-box-shadow:4px 4px  
4px 4px #ECD7D7; box-shadow:4px 4px 4px  
4px #ECD7D7 }
```

Background

The CSS property to change the background color of an element to Hex ECD7D7 is called "background". The background property can be set on classes, ids or directly on the HTML element.

```
.background, #background, body{  
background:#ECD7D7 }
```

If only the background color should be changed can be used:

```
.background{ background-color:#ECD7D7 }
```

This example shows the color as background, it is applied via the CSS property "background".

To optimize and compress your CSS code, you can use our [online CSS compressor and optimizer](#) based on csstidy. If you want to create a linear or radial gradient as background or border, check our [CSS Gradient Generator](#).

Hey! You found this booklet interesting? Support Converting Colors with the new Membership Option!

The pro membership hides all ads, plus gives you double the colors in the color bucket, and more awesome pro features!

[Learn more, Memberships starting at \\$2.50/m!](#)

**Follow me
on Twitter!**

@ConvertingColor