

Converting Colors

Hex(ECD7DD)

Have a look what the booklet for
Hex(ECD7DD) contains.

Hex(ECD7DD)	3
<i>Conversions</i>	4
<i>Details</i>	6
<i>Harmonies</i>	11
<i>Previews</i>	23
<i>Color Blindness Simulation</i>	26
<i>CSS Examples</i>	29

Color

Hex(ECD7DD)

Conversions

Conversions Part 1

Format	Color
Hex	ECD7DD
RGB	236, 215, 221
RGB Percent	93%, 84%, 87%
CMY	0.0745, 0.1569, 0.1333
CMYK	0.00, 0.09, 0.06, 0.07
HSL	343°, 36%, 88%
HSV	343°, 9%, 93%
XYZ	71.9437, 71.6542, 78.4454
YIQ	221.9630, 10.5900, 6.3180

Conversions

Conversions Part 2

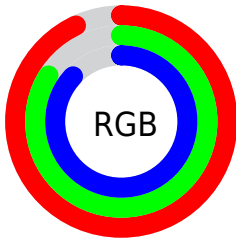
Format	Color
R _Y B	236, 215, 221
Decimal	15521757
CIE Lab	87.80, 8.25, -0.33
CIE LCh	88, 8.259, 357.743
Yxy	71.6542, 0.3240, 0.3227
Android (android.graphics.Color)	4293711837 (0xFFECD7DD)
YUV	221.9630, -0.4748, 12.3104
Hunter-Lab	84.6488, 3.5731, 4.3092

Details

The Hex color **ECD7DD** is a light color, and the websafe version is hex **CCCCCC**. A complement of this color would be **D7ECE6**, and the grayscale version is **DEDEDE**.

A 20% lighter version of the original color is **FFFFFF**, and **B4A0A6** is the 20% darker color. If you saturate the color by 10%, you get **ECBFCC**, and if you desaturate by 10%, it is **ECEFEE**.

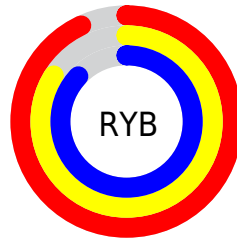
Distribution



Red (93%)

Green (84%)

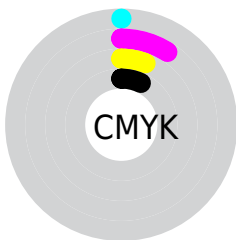
Blue (87%)



Red (93%)

Yellow (84%)

Blue (87%)

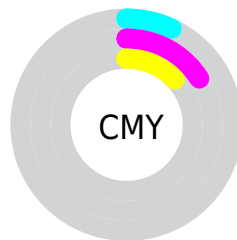


Cyan (0%)

Magenta (9%)

Yellow (6%)

Black (7%)



Cyan (7%)

Magenta (16%)

Yellow (13%)

Brightness & Saturation Gradients

These gradients show how the Hex color ECD7DD changes by changing the brightness by 10 percent. The first figure shows a shift by +10% for each color and the second figure -10%.

Similar to the brightness gradients but the following saturation gradients show a change of the Hex color ECD7DD by changing the saturation by 10% instead.

 ECD7DD

 ECD7DD

FFFFFF

 D0BBC1

 B4A0A6


 99868C

 7F6D72

 66545A

 4E3D42

 37272C

 211318

 000000

 ECD7DD

 ECD7DD

 ECBFCC

 ECFEFE

 ECA8BB

 ECFFFF

 EC90AA

 EC799A

 EC6189

 EC4978

 EC3267

 EC1A56

 EC0345

Harmonies

Analogous

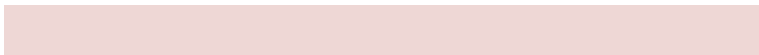
The Analogous color harmony consists of three colors that are next to each other on the color wheel.



E6D8E5



ECD7DD



EED7D5

Triad

The Triadic color harmony groups three colors that are evenly spaced from another and form a triangle on the color wheel.



ECD7DD



DBDECE



CCDFE9

Complementary

The Complementary color scheme is a pair of colors which are on the opposite of each other on the color wheel.



ECD7DD



D7ECE6

Split Complementary

Split-complementary colors differ from the complementary color scheme. The scheme consists of three colors, the original color and two neighbors of the complement color.



C9E1E3



ECD7DD



D2E0D4

Square

The Square scheme is like the rectangle color scheme, but the four colors are evenly spaced on the color wheel.



ECD7DD



E4DBCD



CBE1DB



D4DDEC

Rectangle

The Rectangle color scheme consists of four colors that form a rectangle on the color wheel.



ECD7DD



ECD8D1



CBE1DB



CBE0E7

Sweetspot

The Sweet Spot groups the original color and five complimentary colors.



ECD7DD



FFF7FA



E6D7EC



807A7C



000000



808080

Same Dimension

The Same Dimension uses a secret algorithm to generate beautiful new colors.



ECD7DD



FFE3EB



ECDBD7



756A6D



B50034



36000F

Inverse Universe

The Inverse Universe completely reimagines the original color for something new.



ECD7DD



FFE3EB



D7E8EC



756A6D



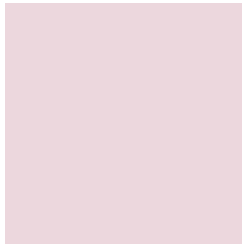
B50034



36000F

Previews

White Background



This preview shows how the Hex color ECD7DD looks on a white background.

Color Contrast Check

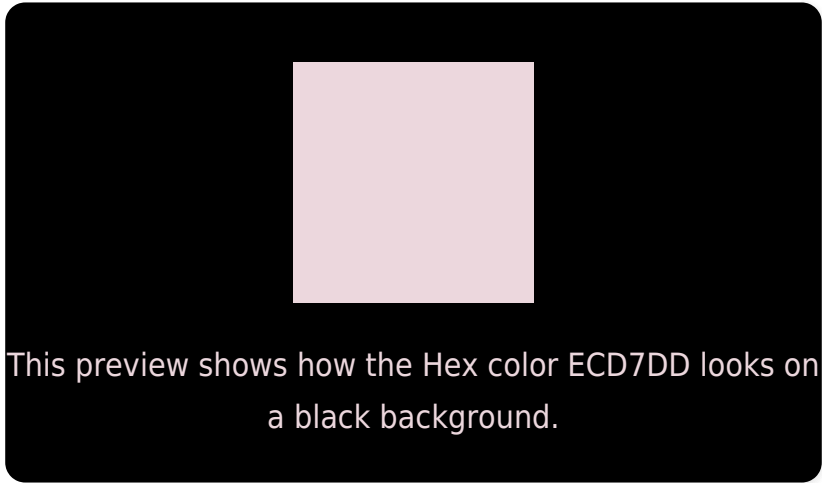
Large Text (above 18pt) WCAG AA × Fail

Any Text WCAG AA × Fail

Large Text (above 18pt) WCAG AAA × Fail

Any Text WCAG AAA × Fail

Black Background



Color Contrast Check

Large Text (above 18pt) WCAG AA ✓ Pass

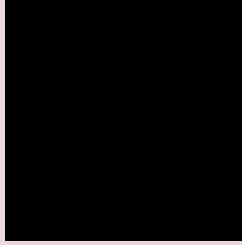
Any Text WCAG AA ✓ Pass

Large Text (above 18pt) WCAG AAA ✓ Pass

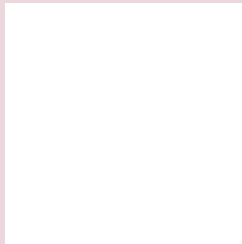
Any Text WCAG AAA ✓ Pass

If you want to check with other color combinations, try the [Color Contrast Checker](#).

Hex ECD7DD Background



This preview shows how black text looks on a background with the Hex color ECD7DD.

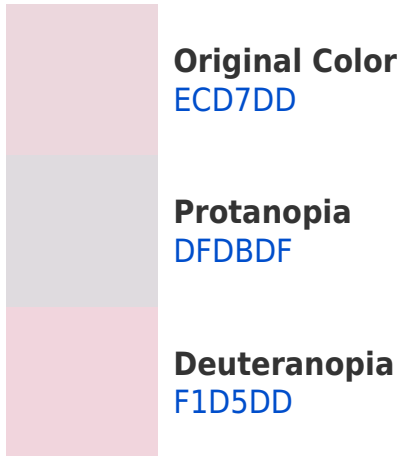


This preview shows how white text looks on a background with the Hex color ECD7DD.

Color Blindness Simulation

Color vision deficiency is a very complex topic, and I could not describe the different causes any better than Wikipedia does, so if you want to learn more, you should check out their [article about color blindness](#).

Dichromacy





Tritanopia
EDD6E6

Trichromacy



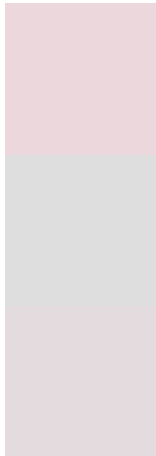
Original Color
ECD7DD

Protanomaly
E4DADE

Deuteranomaly
EFD6DD

Tritanomaly
EDD6E3

Monochromacy



Original Color
ECD7DD

Achromatopsia
DEDEDE

Achromatomaly
E3DBDE

CSS Examples

Text

The CSS property to change the color of the text to Hex ECD7DD is called "color". The color property can be set on classes, ids or directly on the HTML element.

This example shows how text in the color #ECD7DD looks like.

```
.text, #text, p{  
  color:#ECD7DD  
}
```

If you want to add a text shadow in that color use the text-shadow property, you can generate a text shadow directly with our [CSS Text Shadow Generator](#).

Here you see how black text with a 4 pixel #ECD7DD colored shadow looks like.

```
.shadow{ text-shadow: 4px 4px 2px #ECD7DD  
}
```

Border

The CSS property to change the border of an element to Hex ECD7DD is called "border". The border property can be set on classes, ids or directly on the HTML element.

This example shows the color as border, it can be applied via the CSS property "border" or "border-color".

```
.border, #border, table{ border:4px solid  
#ECD7DD }
```

If only the border color should be changed use the property `border-color`.

```
.border{ border-color:#ECD7DD }
```

If you want to add a box shadow in that color use:

Here you see how a box with a 4 pixel #ECD7DD colored shadow looks like.

```
.boxshadow{ -moz-box-shadow:4px 4px 4px  
4px #ECD7DD; -webkit-box-shadow:4px 4px  
4px 4px #ECD7DD; box-shadow:4px 4px 4px  
4px #ECD7DD }
```

Background

The CSS property to change the background color of an element to Hex ECD7DD is called "background". The background property can be set on classes, ids or directly on the HTML element.

```
.background, #background, body{  
background:#ECD7DD }
```

If only the background color should be changed can be used:

```
.background{ background-color:#ECD7DD }
```

This example shows the color as background, it is applied via the CSS property "background".

To optimize and compress your CSS code, you can use our [online CSS compressor and optimizer](#) based on csstidy. If you want to create a linear or radial gradient as background or border, check our [CSS Gradient Generator](#).

Hey! You found this booklet interesting? Support Converting Colors with the new Membership Option!

The pro membership hides all ads, plus gives you double the colors in the color bucket, and more awesome pro features!

[Learn more, Memberships starting at \\$2.50/m!](#)

**Follow me
on Twitter!**

@ConvertingColor