

Converting Colors

Hex(ECDBD8)

Have a look what the booklet for
Hex(ECDBD8) contains.

Hex(ECDBD8)	3
<i>Conversions</i>	4
<i>Details</i>	6
<i>Harmonies</i>	11
<i>Previews</i>	23
<i>Color Blindness Simulation</i>	26
<i>CSS Examples</i>	29

Color

Hex(ECDBD8)

Conversions

Conversions Part 1

Format	Color
Hex	ECDBD8
RGB	236, 219, 216
RGB Percent	93%, 86%, 85%
CMY	0.0745, 0.1412, 0.1529
CMYK	0.00, 0.07, 0.08, 0.07
HSL	9°, 34%, 89%
HSV	9°, 8%, 93%
XYZ	72.3183, 73.4538, 75.3322
YIQ	223.7410, 11.0950, 2.6710

Conversions

Conversions Part 2

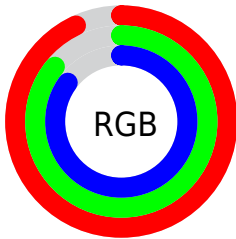
Format	Color
R _Y B	236, 220, 216
Decimal	15522776
CIE Lab	88.66, 5.33, 3.56
CIE LCh	89, 6.410, 33.786
Yxy	73.4538, 0.3271, 0.3322
Android (android.graphics.Color)	4293712856 (0xFFEADB8)
YUV	223.7410, -3.8163, 10.7511
Hunter-Lab	85.7052, 0.6347, 7.8796

Details

The Hex color **ECDBD8** is a light color, and the websafe version is hex **CCCCCC**. A complement of this color would be **D8E9EC**, and the grayscale version is **E0E0E0**.

A 20% lighter version of the original color is **FFFFFF**, and **B4A4A1** is the 20% darker color. If you saturate the color by 10%, you get **ECC7C0**, and if you desaturate by 10%, it is **ECEFF0**.

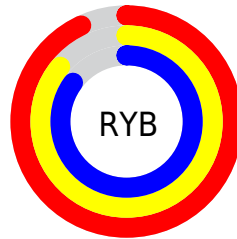
Distribution



Red (93%)

Green (86%)

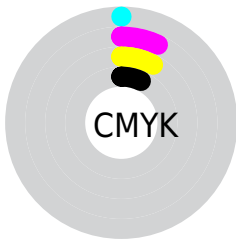
Blue (85%)



Red (93%)

Yellow (86%)

Blue (85%)

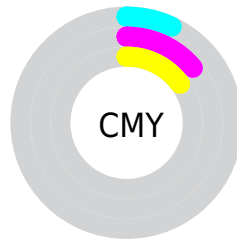


Cyan (0%)

Magenta (7%)

Yellow (8%)

Black (7%)



Cyan (7%)

Magenta (14%)

Yellow (15%)

Brightness & Saturation Gradients

These gradients show how the Hex color ECDBD8 changes by changing the brightness by 10 percent. The first figure shows a shift by +10% for each color and the second figure -10%.

Similar to the brightness gradients but the following saturation gradients show a change of the Hex color ECDBD8 by changing the saturation by 10% instead.

 ECDBD8

FFFFFF

 ECDBD8

 D0BFBC

 B4A4A1

 998A87

 7F706E

 665855

 4E413E

 372B28

 211614

 000000

 ECDBD8

 ECDBD8

 ECC7C0

 ECEFF0

 ECB3A9

 ECFFFF

 EC9F91

 EC8B7A

 EC7762

 EC634A

 EC4F33

 EC3B1B

 EC2604

Harmonies

Analogous

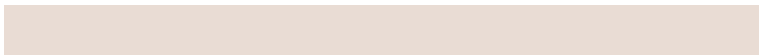
The Analogous color harmony consists of three colors that are next to each other on the color wheel.



ECDBDE



ECDBD8



E9DCD4

Triad

The Triadic color harmony groups three colors that are evenly spaced from another and form a triangle on the color wheel.



ECDBD8



D5E2D9



D9DFEB

Complementary

The Complementary color scheme is a pair of colors which are on the opposite of each other on the color wheel.



ECDBD8



D8E9EC

Split Complementary

Split-complementary colors differ from the complementary color scheme. The scheme consists of three colors, the original color and two neighbors of the complement color.



D3E1E9



ECDBD8



D1E2DF

Square

The Square scheme is like the rectangle color scheme, but the four colors are evenly spaced on the color wheel.



ECDBD8



DCE0D4



D0E2E5



E1DDE9

Rectangle

The Rectangle color scheme consists of four colors that form a rectangle on the color wheel.



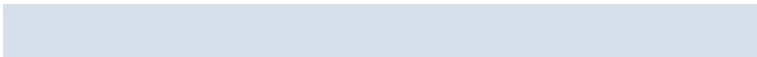
ECDBD8



E5DED3



D0E2E5



D7DFEB

Sweetspot

The Sweet Spot groups the original color and five complimentary colors.



ECDBD8



FFF8F7



ECD8E9



807B7A



000000



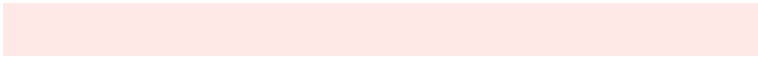
808080

Same Dimension

The Same Dimension uses a secret algorithm to generate beautiful new colors.



ECDBD8



FFE9E6



ECE5D8



756B6A



B51B00



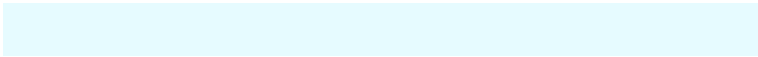
360800

Inverse Universe

The Inverse Universe completely reimagines the original color for something new.



D8E9EC



E6FBFF



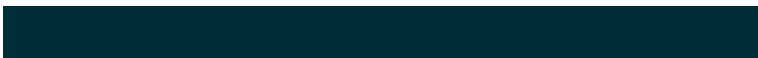
D8DFEC



6A7475



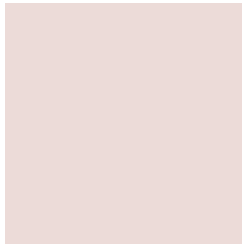
009AB5



002E36

Previews

White Background



This preview shows how the Hex color ECDBD8 looks on a white background.

Color Contrast Check

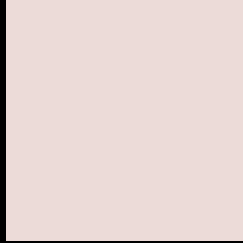
Large Text (above 18pt) WCAG AA × Fail

Any Text WCAG AA × Fail

Large Text (above 18pt) WCAG AAA × Fail

Any Text WCAG AAA × Fail

Black Background



This preview shows how the Hex color ECDBD8 looks on a black background.

Color Contrast Check

Large Text (above 18pt) WCAG AA ✓ Pass

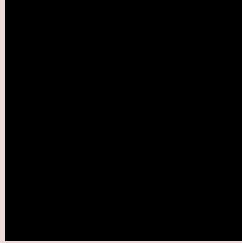
Any Text WCAG AA ✓ Pass

Large Text (above 18pt) WCAG AAA ✓ Pass

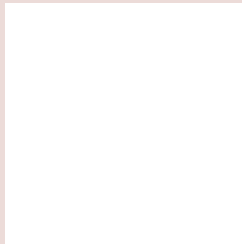
Any Text WCAG AAA ✓ Pass

If you want to check with other color combinations, try the [Color Contrast Checker](#).

Hex ECDBD8 Background



This preview shows how black text looks on a background with the Hex color ECDBD8.

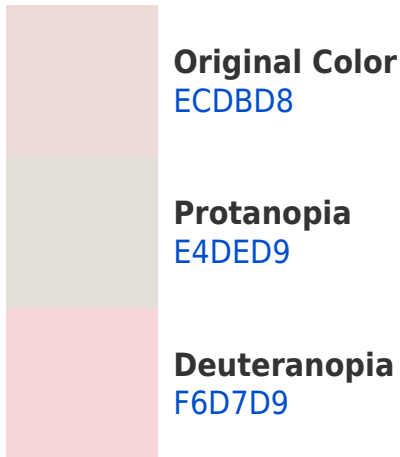


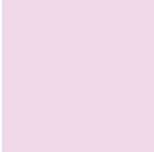
This preview shows how white text looks on a background with the Hex color ECDBD8.

Color Blindness Simulation

Color vision deficiency is a very complex topic, and I could not describe the different causes any better than Wikipedia does, so if you want to learn more, you should check out their [article about color blindness](#).

Dichromacy





Tritanopia
EED8E9

Trichromacy



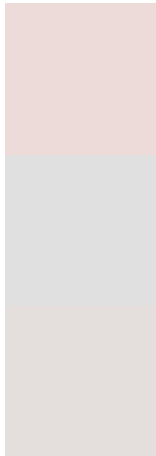
Original Color
ECDBD8

Protanomaly
E7DDD9

Deuteranomaly
F2D8D9

Tritanomaly
EDD9E3

Monochromacy



Original Color
ECDBD8

Achromatopsia
E0E0E0

Achromatomaly
E4DEDD

CSS Examples

Text

The CSS property to change the color of the text to Hex ECDBD8 is called "color". The color property can be set on classes, ids or directly on the HTML element.

This example shows how text in the color #ECDBD8 looks like.

```
.text, #text, p{  
    color:#ECDBD8  
}
```

If you want to add a text shadow in that color use the text-shadow property, you can generate a text shadow directly with our [CSS Text Shadow Generator](#).

Here you see how black text with a 4 pixel #ECDBD8 colored shadow looks like.

```
.shadow{ text-shadow: 4px 4px 2px #ECDBD8
}
```

Border

The CSS property to change the border of an element to Hex ECDBD8 is called "border". The border property can be set on classes, ids or directly on the HTML element.

This example shows the color as border, it can be applied via the CSS property "border" or "border-color".

```
.border, #border, table{ border:4px solid
#ECDBD8 }
```

If only the border color should be changed use the property `border-color`.

```
.border{ border-color:#ECDBD8 }
```

If you want to add a box shadow in that color use:

Here you see how a box with a 4 pixel #ECDBD8 colored shadow looks like.

```
.boxshadow{ -moz-box-shadow:4px 4px 4px  
4px #ECDBD8; -webkit-box-shadow:4px 4px  
4px 4px #ECDBD8; box-shadow:4px 4px 4px  
4px #ECDBD8 }
```

Background

The CSS property to change the background color of an element to Hex ECDBD8 is called "background". The background property can be set on classes, ids or directly on the HTML element.

```
.background, #background, body{  
background:#ECDBD8 }
```

If only the background color should be changed can be used:

```
.background{ background-color:#ECDBD8 }
```

This example shows the color as background, it is applied via the CSS property "background".

To optimize and compress your CSS code, you can use our [online CSS compressor and optimizer](#) based on csstidy. If you want to create a linear or radial gradient as background or border, check our [CSS Gradient Generator](#).

Hey! You found this booklet interesting? Support Converting Colors with the new Membership Option!

The pro membership hides all ads, plus gives you double the colors in the color bucket, and more awesome pro features!

[Learn more, Memberships starting at \\$2.50/m!](#)

**Follow me
on Twitter!**

@ConvertingColor