

Converting Colors

Hex(ECDCE1)

Have a look what the booklet for
Hex(ECDCE1) contains.

Hex(ECDCE1)	3
<i>Conversions</i>	4
<i>Details</i>	6
<i>Harmonies</i>	11
<i>Previews</i>	23
<i>Color Blindness Simulation</i>	26
<i>CSS Examples</i>	29

Color

Hex(ECDCE1)

Conversions

Conversions Part 1

Format	Color
Hex	ECDCE1
RGB	236, 220, 225
RGB Percent	93%, 86%, 88%
CMY	0.0745, 0.1373, 0.1176
CMYK	0.00, 0.07, 0.05, 0.07
HSL	341°, 30%, 89%
HSV	341°, 7%, 93%
XYZ	73.7759, 74.4555, 81.7171
YIQ	225.3540, 7.9310, 4.9470

Conversions

Conversions Part 2

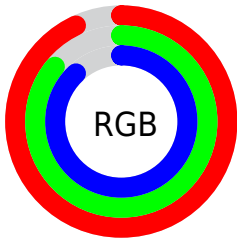
Format	Color
RYB	236, 220, 225
Decimal	15523041
CIELab	89.14, 6.33, -0.48
CIELCh	89, 6.351, 355.652
Yxy	74.4555, 0.3208, 0.3238
Android (android.graphics.Color)	4293713121 (0xFFECDCE1)
YUV	225.3540, -0.1745, 9.3365
Hunter-Lab	86.2876, 1.6141, 4.2518

Details

The Hex color **ECDCE1** is a light color, and the websafe version is hex **CCCCCC**. A complement of this color would be **DCECE7**, and the grayscale version is **E1E1E1**.

A 20% lighter version of the original color is **FFFFFF**, and **B4A5AA** is the 20% darker color. If you saturate the color by 10%, you get **ECC4D1**, and if you desaturate by 10%, it is **ECF4F1**.

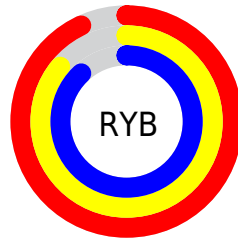
Distribution



Red (93%)

Green (86%)

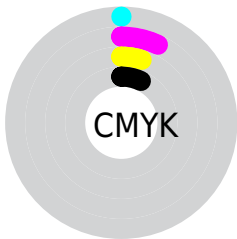
Blue (88%)



Red (93%)

Yellow (86%)

Blue (88%)

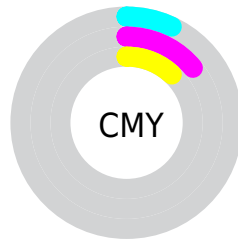


Cyan (0%)

Magenta (7%)

Yellow (5%)

Black (7%)



Cyan (7%)

Magenta (14%)

Yellow (12%)

Brightness & Saturation Gradients

These gradients show how the Hex color ECDCE1 changes by changing the brightness by 10 percent. The first figure shows a shift by +10% for each color and the second figure -10%.

Similar to the brightness gradients but the following saturation gradients show a change of the Hex color ECDCE1 by changing the saturation by 10% instead.

 ECDCE1

FFFFFF

 ECDCE1

 D0C0C5

 B4A5AA

 998B8F

 7F7176

 66595D

 4E4146

 372B2F

 22171B

 070000

 ECDCE1

 ECDCE1

 ECC4D1

 ECF4F1

 ECADC1

 ECFFFF

 EC95B0

 EC7EA0

 EC6690

 EC4E80

 EC376F

 EC1F5F

 EC084F

Harmonies

Analogous

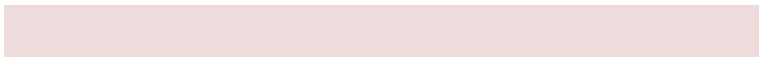
The Analogous color harmony consists of three colors that are next to each other on the color wheel.



E7DDE7



ECDCE1



EDDCDB

Triad

The Triadic color harmony groups three colors that are evenly spaced from another and form a triangle on the color wheel.



ECDCE1



DFE1D5



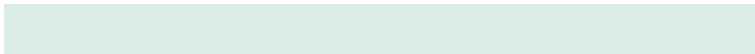
D3E2EA

Complementary

The Complementary color scheme is a pair of colors which are on the opposite of each other on the color wheel.



ECDCE1



DCECE7

Split Complementary

Split-complementary colors differ from the complementary color scheme. The scheme consists of three colors, the original color and two neighbors of the complement color.



D1E3E5



ECDCE1



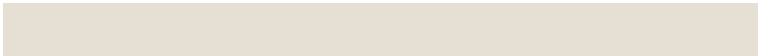
D8E3D9

Square

The Square scheme is like the rectangle color scheme, but the four colors are evenly spaced on the color wheel.



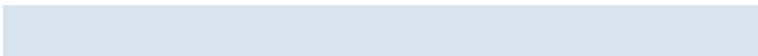
ECDCE1



E6DFD4



D3E4DF



D9E1EC

Rectangle

The Rectangle color scheme consists of four colors that form a rectangle on the color wheel.



ECDCE1



ECDDD7



D3E4DF



D2E3E8

Sweetspot

The Sweet Spot groups the original color and five complimentary colors.



ECDCE1



FFFAFB



E7DCEC



807D7E



000000



808080

Same Dimension

The Same Dimension uses a secret algorithm to generate beautiful new colors.



ECDCE1



FFEBF1



ECDFDC



756A6D



B50039



360011

Inverse Universe

The Inverse Universe completely reimagines the original color for something new.



ECDCE1



FFEBF1



DCE9EC



756A6D



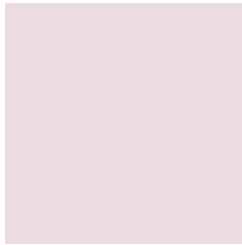
B50039



360011

Previews

White Background



This preview shows how the Hex color ECDCE1 looks on a white background.

Color Contrast Check

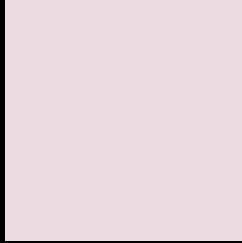
Large Text (above 18pt) WCAG AA × Fail

Any Text WCAG AA × Fail

Large Text (above 18pt) WCAG AAA × Fail

Any Text WCAG AAA × Fail

Black Background



This preview shows how the Hex color ECDCE1 looks on a black background.

Color Contrast Check

Large Text (above 18pt) WCAG AA ✓ Pass

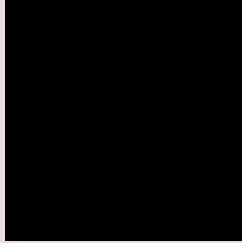
Any Text WCAG AA ✓ Pass

Large Text (above 18pt) WCAG AAA ✓ Pass

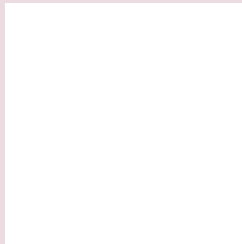
Any Text WCAG AAA ✓ Pass

If you want to check with other color combinations, try the [Color Contrast Checker](#).

Hex ECDCE1 Background



This preview shows how black text looks on a background with the Hex color ECDCE1.

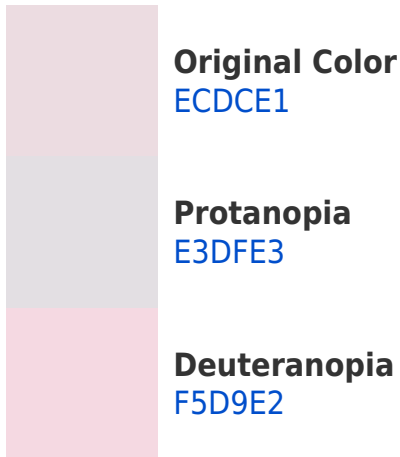


This preview shows how white text looks on a background with the Hex color ECDCE1.

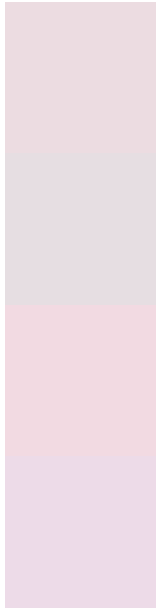
Color Blindness Simulation

Color vision deficiency is a very complex topic, and I could not describe the different causes any better than Wikipedia does, so if you want to learn more, you should check out their [article about color blindness](#).

Dichromacy



Trichromacy



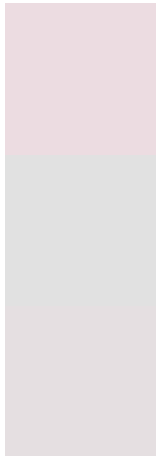
Original Color
ECDCE1

Protanomaly
E6DEE2

Deuteranomaly
F2DAE2

Tritanomaly
EDDBE8

Monochromacy



Original Color
ECDCE1

Achromatopsia
E1E1E1

Achromatomaly
E5DFE1

CSS Examples

Text

The CSS property to change the color of the text to Hex ECDCE1 is called "color". The color property can be set on classes, ids or directly on the HTML element.

This example shows how text in the color #ECDCE1 looks like.

```
.text, #text, p{  
    color:#ECDCE1  
}
```

If you want to add a text shadow in that color use the text-shadow property, you can generate a text shadow directly with our [CSS Text Shadow Generator](#).

Here you see how black text with a 4 pixel #ECDCE1 colored shadow looks like.

```
.shadow{ text-shadow: 4px 4px 2px #ECDCE1
}
```

Border

The CSS property to change the border of an element to Hex ECDCE1 is called "border". The border property can be set on classes, ids or directly on the HTML element.

This example shows the color as border, it can be applied via the CSS property "border" or "border-color".

```
.border, #border, table{ border:4px solid
#ECDCE1 }
```

If only the border color should be changed use the property `border-color`.

```
.border{ border-color:#ECDCE1 }
```

If you want to add a box shadow in that color use:

Here you see how a box with a 4 pixel #ECDCE1 colored shadow looks like.

```
.boxshadow{ -moz-box-shadow:4px 4px 4px  
4px #ECDCE1; -webkit-box-shadow:4px 4px  
4px 4px #ECDCE1; box-shadow:4px 4px 4px  
4px #ECDCE1 }
```

Background

The CSS property to change the background color of an element to Hex ECDCE1 is called "background". The background property can be set on classes, ids or directly on the HTML element.

```
.background, #background, body{  
background:#ECDCE1 }
```

If only the background color should be changed can be used:

```
.background{ background-color:#ECDCE1 }
```

This example shows the color as background, it is applied via the CSS property "background".

To optimize and compress your CSS code, you can use our [online CSS compressor and optimizer](#) based on csstidy. If you want to create a linear or radial gradient as background or border, check our [CSS Gradient Generator](#).

Hey! You found this booklet interesting? Support Converting Colors with the new Membership Option!

The pro membership hides all ads, plus gives you double the colors in the color bucket, and more awesome pro features!

[Learn more, Memberships starting at \\$2.50/m!](#)

**Follow me
on Twitter!**

@ConvertingColor