

# Converting Colors

Hex(ED4C86)

Have a look what the booklet for  
Hex(ED4C86) contains.

<b>Hex(ED4C86)</b> .....	3
<i><b>Conversions</b></i> .....	4
<i><b>Details</b></i> .....	6
<i><b>Harmonies</b></i> .....	11
<i><b>Previews</b></i> .....	23
<i><b>Color Blindness Simulation</b></i> .....	26
<i><b>CSS Examples</b></i> .....	29

# Color

Hex(ED4C86)

# Conversions

## Conversions Part 1

<b>Format</b>	<b>Color</b>
Hex	ED4C86
RGB	237, 76, 134
RGB Percent	93%, 30%, 53%
CMY	0.0706, 0.7020, 0.4745
CMYK	0.00, 0.68, 0.43, 0.07
HSL	338°, 82%, 61%
HSV	338°, 68%, 93%
XYZ	41.8126, 24.8946, 25.1556
YIQ	130.7510, 77.3380, 52.1700

# Conversions

## Conversions Part 2

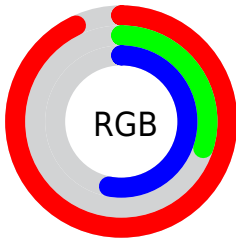
<b>Format</b>	<b>Color</b>
<b>R<sub>YB</sub></b>	237, 76, 134
Decimal	15551622
CIE <sub>Lab</sub>	56.97, 65.73, 3.09
CIE <sub>LCh</sub>	57, 65.806, 2.694
Yxy	24.8946, 0.4552, 0.2710
Android (android.graphics.Color)	4293741702 (0xFFED4C86)
YUV	130.7510, 1.6018, 93.1804
Hunter-Lab	49.8945, 62.2710, 5.0336

# Details

The Hex color **ED4C86** is a dark color, and the websafe version is hex **FF6699**. The color can be described as middle muted rose. A complement of this color would be **4CEDB3**, and the grayscale version is **838383**.

A 20% lighter version of the original color is **FF86BB**, and **B00055** is the 20% darker color. If you saturate the color by 10%, you get **ED3477**, and if you desaturate by 10%, it is **ED6495**.

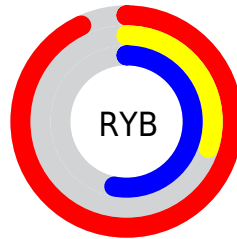
# Distribution



Red (93%)

Green (30%)

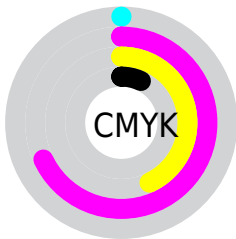
Blue (53%)



Red (93%)

Yellow (30%)

Blue (53%)

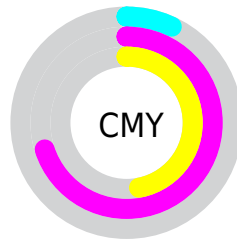


Cyan (0%)

Magenta (68%)

Yellow (43%)

Black (7%)



Cyan (7%)

Magenta (70%)

Yellow (47%)

# Brightness & Saturation Gradients

These gradients show how the Hex color ED4C86 changes by changing the brightness by 10 percent. The first figure shows a shift by +10% for each color and the second figure -10%.

Similar to the brightness gradients but the following saturation gradients show a change of the Hex color ED4C86 by changing the saturation by 10% instead.



 ED4C86

 ED4C86

FFFFFF

 CE2B6D

 FF86BB

 B00055

 FFA3D7

 92003E

 FFC0F3

 740028

 FFDEFF

 570014

 FFFCF3

 3B0003

 150000

 000000

 ED4C86

 ED4C86

 ED3477

 ED6495

 ED1D68

 ED7BA4

 ED0559

 ED93B3

 ED0055

 EDABC3

 EDC3D2

 EDDAE1

 EDF2F0

 EDFFFF

# Harmonies

## Analogous

The Analogous color harmony consists of three colors that are next to each other on the color wheel.



D15CBE



ED4C86



E9584E

# Triad

The Triadic color harmony groups three colors that are evenly spaced from another and form a triangle on the color wheel.



ED4C86



649717



009CEF

# Complementary

The Complementary color scheme is a pair of colors which are on the opposite of each other on the color wheel.



ED4C86



4CEDB3

# Split Complementary

Split-complementary colors differ from the complementary color scheme. The scheme consists of three colors, the original color and two neighbors of the complement color.



00A2C5



ED4C86



009F51

# Square

The Square scheme is like the rectangle color scheme, but the four colors are evenly spaced on the color wheel.



ED4C86



9F8800



00A38C



008EFC

# Rectangle

The Rectangle color scheme consists of four colors that form a rectangle on the color wheel.



ED4C86



D8692C



00A38C



009FE3



# Sweetspot

The Sweet Spot groups the original color and five complimentary colors.



ED4C86



FFCCDE



B24CED



80616C



000000



808080



# Same Dimension

The Same Dimension uses a secret algorithm to generate beautiful new colors.



ED4C86



FF2E79



ED614C



756A6E



B50041



360013



# Inverse Universe

The Inverse Universe completely reimagines the original color for something new.



ED4C86



FF2E79



4CD8ED



756A6E



B50041



360013



# Previews

## White Background



This preview shows how the Hex color ED4C86 looks on a white background.

## Color Contrast Check

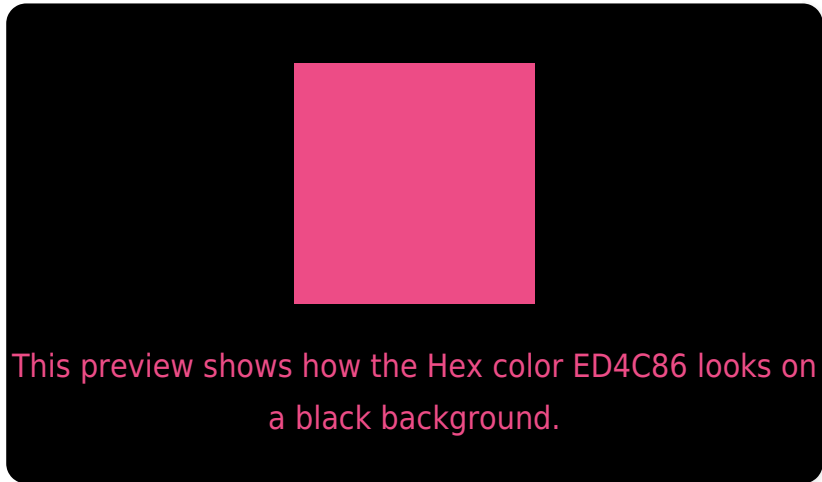
Large Text (above 18pt) WCAG AA ✓ Pass

Any Text WCAG AA ✗ Fail

Large Text (above 18pt) WCAG AAA ✗ Fail

Any Text WCAG AAA ✗ Fail

# Black Background



## Color Contrast Check

Large Text (above 18pt) WCAG AA ✓ Pass

Any Text WCAG AA ✓ Pass

Large Text (above 18pt) WCAG AAA ✓ Pass

Any Text WCAG AAA × Fail

If you want to check with other color combinations, try the [Color Contrast Checker](#).



## Hex ED4C86 Background



This preview shows how black text looks on a background with the Hex color ED4C86.

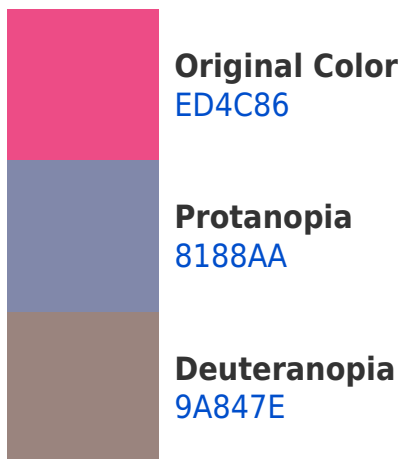



This preview shows how white text looks on a background with the Hex color ED4C86.

# Color Blindness Simulation

Color vision deficiency is a very complex topic, and I could not describe the different causes any better than Wikipedia does, so if you want to learn more, you should check out their [article about color blindness](#).

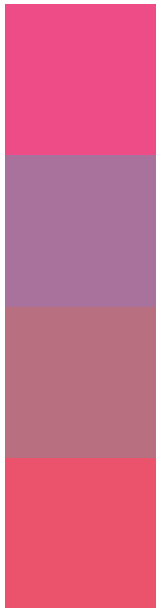
## Dichromacy





**Tritanopia**  
EA565B

# Trichromacy



**Original Color**  
ED4C86

**Protanomaly**  
A8729D

**Deuteranomaly**  
B87081

**Tritanomaly**  
EB526B

# Monochromacy



**Original Color**  
ED4C86

**Achromatopsia**  
838383

**Achromatomaly**  
AA6F84

# CSS Examples

## Text

The CSS property to change the color of the text to Hex ED4C86 is called "color". The color property can be set on classes, ids or directly on the HTML element.

This example shows how text in the color #ED4C86 looks like.

```
.text, #text, p{  
    color:#ED4C86  
}
```

If you want to add a text shadow in that color use the text-shadow property, you can generate a text shadow directly with our [CSS Text Shadow Generator](#).

Here you see how black text with a 4 pixel #ED4C86 colored shadow looks like.

```
.shadow{ text-shadow: 4px 4px 2px #ED4C86
}
```

## Border

The CSS property to change the border of an element to Hex ED4C86 is called "border". The border property can be set on classes, ids or directly on the HTML element.

This example shows the color as border, it can be applied via the CSS property "border" or "border-color".

```
.border, #border, table{ border:4px solid
#ED4C86 }
```

If only the border color should be changed use the property `border-color`.

```
.border{ border-color:#ED4C86 }
```

If you want to add a box shadow in that color use:

Here you see how a box with a 4 pixel #ED4C86 colored shadow looks like.

```
.boxshadow{ -moz-box-shadow:4px 4px 4px  
4px #ED4C86; -webkit-box-shadow:4px 4px  
4px 4px #ED4C86; box-shadow:4px 4px 4px  
4px #ED4C86 }
```

# Background

The CSS property to change the background color of an element to Hex ED4C86 is called "background". The background property can be set on classes, ids or directly on the HTML element.

```
.background, #background, body{  
background:#ED4C86 }
```

If only the background color should be changed can be used:

```
.background{ background-color:#ED4C86 }
```

This example shows the color as background, it is applied via the CSS property "background".

To optimize and compress your CSS code, you can use our [online CSS compressor and optimizer](#) based on csstidy. If you want to create a linear or radial gradient as background or border, check our [CSS Gradient Generator](#).



Hey! You found this booklet interesting? Support Converting Colors with the new Membership Option!

The pro membership hides all ads, plus gives you double the colors in the color bucket, and more awesome pro features!

**[Learn more, Memberships starting at \\$2.50/m!](#)**

**Follow me  
on Twitter!**

@ConvertingColor