

Converting Colors

Hex(ED6A7F)

Have a look what the booklet for
Hex(ED6A7F) contains.

Hex(ED6A7F)	3
<i>Conversions</i>	4
<i>Details</i>	6
<i>Harmonies</i>	11
<i>Previews</i>	23
<i>Color Blindness Simulation</i>	26
<i>CSS Examples</i>	29

Color

Hex(ED6A7F)

Conversions

Conversions Part 1

Format	Color
Hex	ED6A7F
RGB	237, 106, 127
RGB Percent	93%, 42%, 50%
CMY	0.0706, 0.5843, 0.5020
CMYK	0.00, 0.55, 0.46, 0.07
HSL	350°, 78%, 67%
HSV	350°, 55%, 93%
XYZ	43.9099, 29.8449, 23.5250
YIQ	147.5630, 71.3350, 34.3030

Conversions

Conversions Part 2

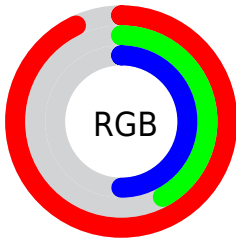
Format	Color
R _Y B	237, 106, 127
Decimal	15559295
CIE Lab	61.52, 52.39, 13.64
CIE LCh	62, 54.134, 14.599
Yxy	29.8449, 0.4514, 0.3068
Android (android.graphics.Color)	4293749375 (0xFFED6A7F)
YUV	147.5630, -10.1376, 78.4362
Hunter-Lab	54.6305, 47.8680, 12.7098

Details

The Hex color **ED6A7F** is a light color, and the websafe version is hex **CC6666**. A complement of this color would be **6AEDD8**, and the grayscale version is **949494**.

A 20% lighter version of the original color is **FFA1B4**, and **B1334E** is the 20% darker color. If you saturate the color by 10%, you get **ED526B**, and if you desaturate by 10%, it is **ED8293**.

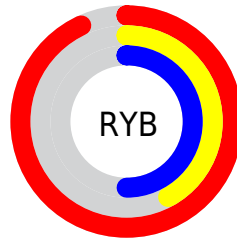
Distribution



Red (93%)

Green (42%)

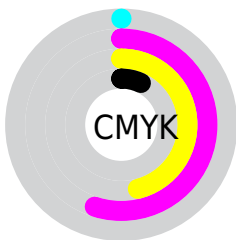
Blue (50%)



Red (93%)

Yellow (42%)

Blue (50%)

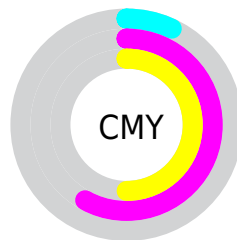


Cyan (0%)

Magenta (55%)

Yellow (46%)

Black (7%)



Cyan (7%)

Magenta (58%)

Yellow (50%)

Brightness & Saturation Gradients

These gradients show how the Hex color ED6A7F changes by changing the brightness by 10 percent. The first figure shows a shift by +10% for each color and the second figure -10%.

Similar to the brightness gradients but the following saturation gradients show a change of the Hex color ED6A7F by changing the saturation by 10% instead.

 ED6A7F

 ED6A7F

FFFFFF

 CF4F66

 FFA1B4

 B1334E

 FFBDCF

 931038

 FFDAEB

 760022

 FFF7FF

 59000D

 3F0002

 1D0001

 000000

 ED6A7F

 ED6A7F

 ED526B

 ED8293

 ED3B57

 ED99A7

 ED2343

 EDB1BB

 ED0B2F

 EDC9CF

 ED0026

 EDE1E3

 EDF8F6

 EDFFFF

Harmonies

Analogous

The Analogous color harmony consists of three colors that are next to each other on the color wheel.



E06DAF



ED6A7F



E27753

Triad

The Triadic color harmony groups three colors that are evenly spaced from another and form a triangle on the color wheel.



ED6A7F



62A44D



00A1F1

Complementary

The Complementary color scheme is a pair of colors which are on the opposite of each other on the color wheel.



ED6A7F



6AEDD8

Split Complementary

Split-complementary colors differ from the complementary color scheme. The scheme consists of three colors, the original color and two neighbors of the complement color.



00A9D7



ED6A7F



00AA79

Square

The Square scheme is like the rectangle color scheme, but the four colors are evenly spaced on the color wheel.



ED6A7F



989931



00ACAB



6992F1

Rectangle

The Rectangle color scheme consists of four colors that form a rectangle on the color wheel.



ED6A7F



CF833D



00ACAB



00A4EB

Sweetspot

The Sweet Spot groups the original color and five complimentary colors.



ED6A7F



FFD4DB



D76AED



80666A



000000



808080

Same Dimension

The Same Dimension uses a secret algorithm to generate beautiful new colors.



ED6A7F



FF5772



ED966A



756A6B



B5001D



360009

Inverse Universe

The Inverse Universe completely reimagines the original color for something new.



ED6A7F



FF5772



6AC1ED



756A6B



B5001D



360009

Previews

White Background



This preview shows how the Hex color ED6A7F looks on a white background.

Color Contrast Check

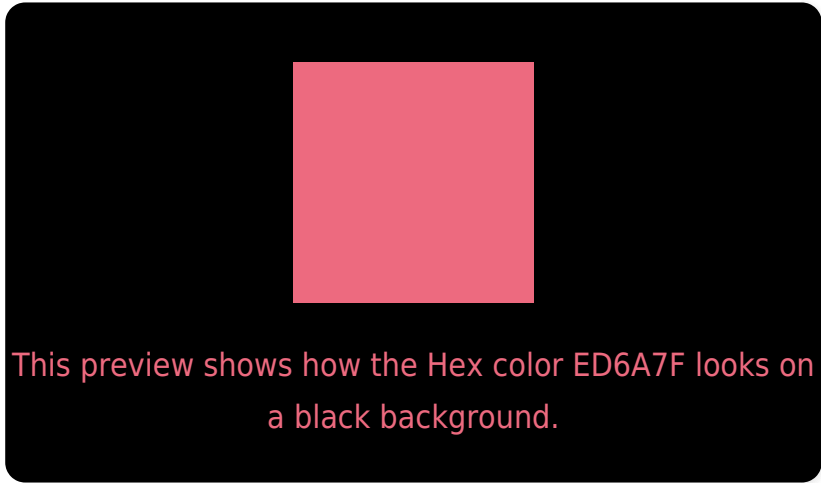
Large Text (above 18pt) WCAG AA ✓ Pass

Any Text WCAG AA × Fail

Large Text (above 18pt) WCAG AAA × Fail

Any Text WCAG AAA × Fail

Black Background



Color Contrast Check

Large Text (above 18pt) WCAG AA ✓ Pass

Any Text WCAG AA ✓ Pass

Large Text (above 18pt) WCAG AAA ✓ Pass

Any Text WCAG AAA × Fail

If you want to check with other color combinations, try the [Color Contrast Checker](#).

Hex ED6A7F Background



This preview shows how black text looks on a background with the Hex color ED6A7F.



This preview shows how white text looks on a background with the Hex color ED6A7F.

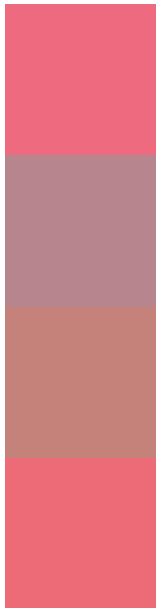
Color Blindness Simulation

Color vision deficiency is a very complex topic, and I could not describe the different causes any better than Wikipedia does, so if you want to learn more, you should check out their [article about color blindness](#).

Dichromacy



Trichromacy



Original Color
ED6A7F

Protanomaly
B6858D

Deuteranomaly
C4827B

Tritanomaly
EC6B77

Monochromacy



Original Color
ED6A7F

Achromatopsia
949494

Achromatomaly
B4858C

CSS Examples

Text

The CSS property to change the color of the text to Hex ED6A7F is called "color". The color property can be set on classes, ids or directly on the HTML element.

This example shows how text in the color #ED6A7F looks like.

```
.text, #text, p{  
    color:#ED6A7F  
}
```

If you want to add a text shadow in that color use the text-shadow property, you can generate a text shadow directly with our [CSS Text Shadow Generator](#).

Here you see how black text with a 4 pixel #ED6A7F colored shadow looks like.

```
.shadow{ text-shadow: 4px 4px 2px #ED6A7F
}
```

Border

The CSS property to change the border of an element to Hex ED6A7F is called "border". The border property can be set on classes, ids or directly on the HTML element.

This example shows the color as border, it can be applied via the CSS property "border" or "border-color".

```
.border, #border, table{ border:4px solid
#ED6A7F }
```

If only the border color should be changed use the property `border-color`.

```
.border{ border-color:#ED6A7F }
```

If you want to add a box shadow in that color use:

Here you see how a box with a 4 pixel #ED6A7F colored shadow looks like.

```
.boxshadow{ -moz-box-shadow:4px 4px 4px  
4px #ED6A7F; -webkit-box-shadow:4px 4px  
4px 4px #ED6A7F; box-shadow:4px 4px 4px  
4px #ED6A7F }
```

Background

The CSS property to change the background color of an element to Hex ED6A7F is called "background". The background property can be set on classes, ids or directly on the HTML element.

```
.background, #background, body{  
background:#ED6A7F }
```

If only the background color should be changed can be used:

```
.background{ background-color:#ED6A7F }
```

This example shows the color as background, it is applied via the CSS property "background".

To optimize and compress your CSS code, you can use our [online CSS compressor and optimizer](#) based on csstidy. If you want to create a linear or radial gradient as background or border, check our [CSS Gradient Generator](#).

Hey! You found this booklet interesting? Support Converting Colors with the new Membership Option!

The pro membership hides all ads, plus gives you double the colors in the color bucket, and more awesome pro features!

[Learn more, Memberships starting at \\$2.50/m!](#)

**Follow me
on Twitter!**

@ConvertingColor