

Converting Colors

Hex(ED7184)

Have a look what the booklet for
Hex(ED7184) contains.

Hex(ED7184)	3
<i>Conversions</i>	4
<i>Details</i>	6
<i>Harmonies</i>	11
<i>Previews</i>	23
<i>Color Blindness Simulation</i>	26
<i>CSS Examples</i>	29

Color

Hex(ED7184)

Conversions

Conversions Part 1

Format	Color
Hex	ED7184
RGB	237, 113, 132
RGB Percent	93%, 44%, 52%
CMY	0.0706, 0.5569, 0.4824
CMYK	0.00, 0.52, 0.44, 0.07
HSL	351°, 78%, 69%
HSV	351°, 52%, 93%
XYZ	44.9950, 31.4807, 25.5347
YIQ	152.2420, 67.8050, 32.1970

Conversions

Conversions Part 2

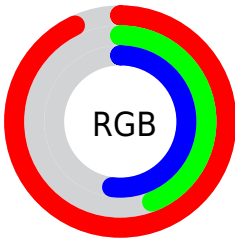
Format	Color
R_{YB}	237, 113, 132
Decimal	15561092
CIE _{Lab}	62.91, 49.55, 12.72
CIE _{LCh}	63, 51.155, 14.397
Yxy	31.4807, 0.4411, 0.3086
Android (android.graphics.Color)	4293751172 (0xFFED7184)
YUV	152.2420, -9.9793, 74.3328
Hunter-Lab	56.1077, 44.9580, 12.2924

Details

The Hex color **ED7184** is a light color, and the websafe version is hex **CC6666**. A complement of this color would be **71EDDA**, and the grayscale version is **989898**.

A 20% lighter version of the original color is **FFA8B9**, and **B13B53** is the 20% darker color. If you saturate the color by 10%, you get **ED5970**, and if you desaturate by 10%, it is **ED8998**.

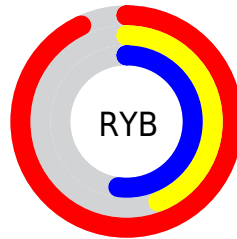
Distribution



Red (93%)

Green (44%)

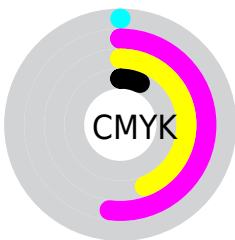
Blue (52%)



Red (93%)

Yellow (44%)

Blue (52%)

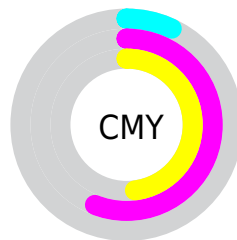


Cyan (0%)

Magenta (52%)

Yellow (44%)

Black (7%)



Cyan (7%)

Magenta (56%)

Yellow (48%)

Brightness & Saturation Gradients

These gradients show how the Hex color ED7184 changes by changing the brightness by 10 percent. The first figure shows a shift by +10% for each color and the second figure -10%.

Similar to the brightness gradients but the following saturation gradients show a change of the Hex color ED7184 by changing the saturation by 10% instead.

 ED7184

 ED7184

FFFFFF

 CF566B

 FFA8B9

 B13B53

 FFC4D5

 941E3C

 FFE1F1

 770026

FFFEFF

 5A0012

 400001

 210001

 000000

 ED7184

 ED7184

 ED5970

 ED8998

 ED425C

 EDA0AC

 ED2A48

 EDB8C0

 ED1234

 EDD0D4

 ED0024

 EDE7E8

 EDFFFC

 EDFFFF

Harmonies

Analogous

The Analogous color harmony consists of three colors that are next to each other on the color wheel.



E074B2



ED7184



E37C5A

Triad

The Triadic color harmony groups three colors that are evenly spaced from another and form a triangle on the color wheel.



ED7184



6AA754



00A4EF

Complementary

The Complementary color scheme is a pair of colors which are on the opposite of each other on the color wheel.



ED7184



71EDDA

Split Complementary

Split-complementary colors differ from the complementary color scheme. The scheme consists of three colors, the original color and two neighbors of the complement color.



00ACD7



ED7184



00AD7E

Square

The Square scheme is like the rectangle color scheme, but the four colors are evenly spaced on the color wheel.



ED7184



9D9D3B



00AFAD



7196F0

Rectangle

The Rectangle color scheme consists of four colors that form a rectangle on the color wheel.



ED7184



D18846



00AFAD



00A7EA

Sweetspot

The Sweet Spot groups the original color and five complimentary colors.



ED7184



FFD6DC



D871ED



80676B



000000



808080

Same Dimension

The Same Dimension uses a secret algorithm to generate beautiful new colors.



ED7184



FF5E77



ED9A71



756A6B



B5001C



360008

Inverse Universe

The Inverse Universe completely reimagines the original color for something new.



ED7184



FF5E77



71C4ED



756A6B



B5001C



360008

Previews

White Background



This preview shows how the Hex color ED7184 looks on a white background.

Color Contrast Check

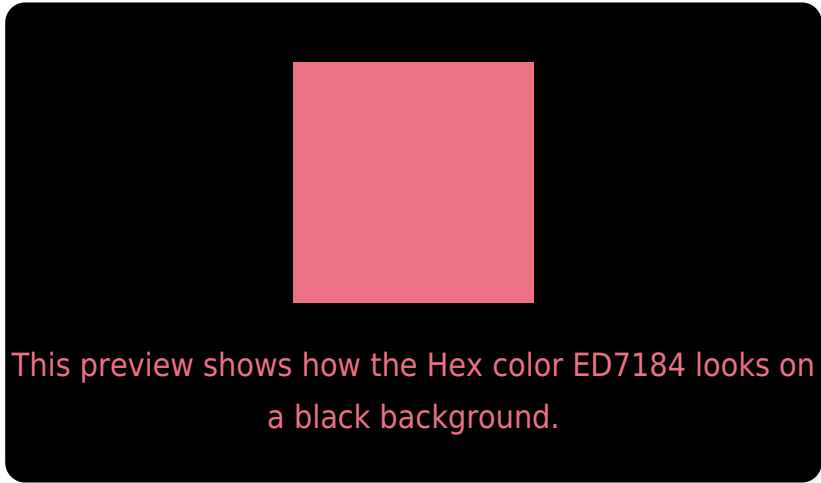
Large Text (above 18pt) WCAG AA × Fail

Any Text WCAG AA × Fail

Large Text (above 18pt) WCAG AAA × Fail

Any Text WCAG AAA × Fail

Black Background



Color Contrast Check

Large Text (above 18pt) WCAG AA ✓ Pass

Any Text WCAG AA ✓ Pass

Large Text (above 18pt) WCAG AAA ✓ Pass

Any Text WCAG AAA ✓ Pass

If you want to check with other color combinations, try the [Color Contrast Checker](#).

Hex ED7184 Background



This preview shows how black text looks on a background with the Hex color ED7184.

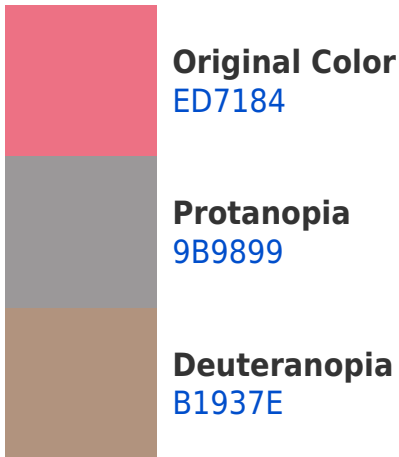


This preview shows how white text looks on a background with the Hex color ED7184.

Color Blindness Simulation

Color vision deficiency is a very complex topic, and I could not describe the different causes any better than Wikipedia does, so if you want to learn more, you should check out their [article about color blindness](#).

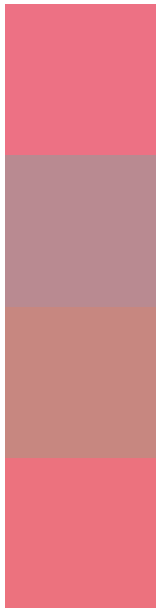
Dichromacy





Tritanopia
EC737B

Trichromacy



Original Color
ED7184

Protanomaly
B98A91

Deuteranomaly
C78780

Tritanomaly
EC727E

Monochromacy



Original Color
ED7184

Achromatopsia
989898

Achromatomaly
B78A91

CSS Examples

Text

The CSS property to change the color of the text to Hex ED7184 is called "color". The color property can be set on classes, ids or directly on the HTML element.

This example shows how text in the color #ED7184 looks like.

```
.text, #text, p{  
    color:#ED7184  
}
```

If you want to add a text shadow in that color use the text-shadow property, you can generate a text shadow directly with our [CSS Text Shadow Generator](#).

Here you see how black text with a 4 pixel #ED7184 colored shadow looks like.

```
.shadow{ text-shadow: 4px 4px 2px #ED7184
}
```

Border

The CSS property to change the border of an element to Hex ED7184 is called "border". The border property can be set on classes, ids or directly on the HTML element.

This example shows the color as border, it can be applied via the CSS property "border" or "border-color".

```
.border, #border, table{ border:4px solid
#ED7184 }
```

If only the border color should be changed use the property `border-color`.

```
.border{ border-color:#ED7184 }
```

If you want to add a box shadow in that color use:

Here you see how a box with a 4 pixel #ED7184 colored shadow looks like.

```
.boxshadow{ -moz-box-shadow:4px 4px 4px  
4px #ED7184; -webkit-box-shadow:4px 4px  
4px 4px #ED7184; box-shadow:4px 4px 4px  
4px #ED7184 }
```

Background

The CSS property to change the background color of an element to Hex ED7184 is called "background". The background property can be set on classes, ids or directly on the HTML element.

```
.background, #background, body{  
background:#ED7184 }
```

If only the background color should be changed can be used:

```
.background{ background-color:#ED7184 }
```

This example shows the color as background, it is applied via the CSS property "background".

To optimize and compress your CSS code, you can use our [online CSS compressor and optimizer](#) based on csstidy. If you want to create a linear or radial gradient as background or border, check our [CSS Gradient Generator](#).

Hey! You found this booklet interesting? Support Converting Colors with the new Membership Option!

The pro membership hides all ads, plus gives you double the colors in the color bucket, and more awesome pro features!

[Learn more, Memberships starting at \\$2.50/m!](#)

**Follow me
on Twitter!**

@ConvertingColor