

Converting Colors

Hex(ED7769)

Have a look what the booklet for
Hex(ED7769) contains.

Hex(ED7769)	3
<i>Conversions</i>	4
<i>Details</i>	6
<i>Harmonies</i>	11
<i>Previews</i>	23
<i>Color Blindness Simulation</i>	26
<i>CSS Examples</i>	29

Color

Hex(ED7769)

Conversions

Conversions Part 1

Format	Color
Hex	ED7769
RGB	237, 119, 105
RGB Percent	93%, 47%, 41%
CMY	0.0706, 0.5333, 0.5882
CMYK	0.00, 0.50, 0.56, 0.07
HSL	6°, 79%, 67%
HSV	6°, 56%, 93%
XYZ	44.0717, 32.2181, 17.2605
YIQ	152.6860, 74.8220, 20.6620

Conversions

Conversions Part 2

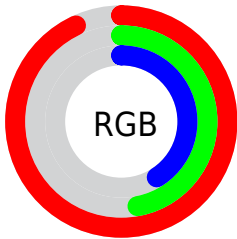
Format	Color
R _Y B	237, 121, 105
Decimal	15562601
CIE Lab	63.52, 44.23, 28.87
CIE LCh	64, 52.816, 33.131
Yxy	32.2181, 0.4711, 0.3444
Android (android.graphics.Color)	4293752681 (0xFFED7769)
YUV	152.6860, -23.5092, 73.9434
Hunter-Lab	56.7610, 39.2634, 21.7032

Details

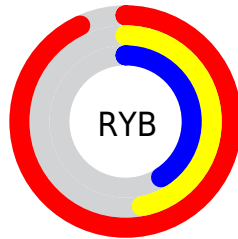
The Hex color **ED7769** is a light color, and the websafe version is hex **CC6666**. A complement of this color would be **69DFED**, and the grayscale version is **999999**.

A 20% lighter version of the original color is **FFAD9C**, and **B0423A** is the 20% darker color. If you saturate the color by 10%, you get **ED6251**, and if you desaturate by 10%, it is **ED8C81**.

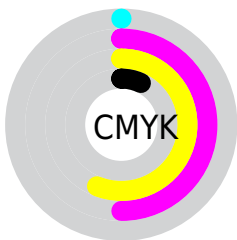
Distribution



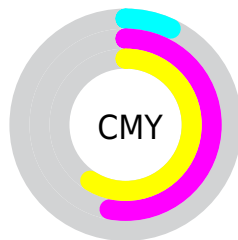
- Red (93%)
- Green (47%)
- Blue (41%)



- Red (93%)
- Yellow (47%)
- Blue (41%)



- Cyan (0%)
- Magenta (50%)
- Yellow (56%)
- Black (7%)



- Cyan (7%)
- Magenta (53%)
- Yellow (59%)

Brightness & Saturation Gradients

These gradients show how the Hex color ED7769 changes by changing the brightness by 10 percent. The first figure shows a shift by +10% for each color and the second figure -10%.

Similar to the brightness gradients but the following saturation gradients show a change of the Hex color ED7769 by changing the saturation by 10% instead.

 ED7769

 ED7769

FFFFFF

 CE5D51

 FFAD9C

 B0423A

 FFCAB7

 932824

 FFE6D3

 75060F

 FFFFEF

 590000

 3D0000

 1E0001

 000000

 ED7769

 ED7769

 ED6251

 ED8C81

 ED4D3A

 EDA198

 ED3722

 EDB7B0

 ED220A

 EDCCC8

 ED1900

 EDE1DF

 EDF6F7

 EDFFFF

Harmonies

Analogous

The Analogous color harmony consists of three colors that are next to each other on the color wheel.



EF7097



ED7769



D68845

Triad

The Triadic color harmony groups three colors that are evenly spaced from another and form a triangle on the color wheel.



ED7769



3BAE6D



449DF8

Complementary

The Complementary color scheme is a pair of colors which are on the opposite of each other on the color wheel.



ED7769



69DFED

Split Complementary

Split-complementary colors differ from the complementary color scheme. The scheme consists of three colors, the original color and two neighbors of the complement color.



00AAED



ED7769



00B19D

Square

The Square scheme is like the rectangle color scheme, but the four colors are evenly spaced on the color wheel.



ED7769



7FA647



00B0CC



A38BE9

Rectangle

The Rectangle color scheme consists of four colors that form a rectangle on the color wheel.



ED7769



BD9438



00B0CC



00A2F7

Sweetspot

The Sweet Spot groups the original color and five complimentary colors.



ED7769



FFD8D4



ED69E0



806966



000000



808080

Same Dimension

The Same Dimension uses a secret algorithm to generate beautiful new colors.



ED7769



FF6654



EDB869



756B6A



B51300



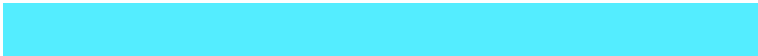
360600

Inverse Universe

The Inverse Universe completely reimagines the original color for something new.



69DFED



54EDFF



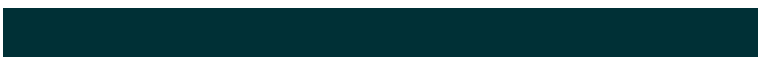
699EED



6A7475



00A2B5



003036

Previews

White Background



This preview shows how the Hex color ED7769 looks on a white background.

Color Contrast Check

Large Text (above 18pt) WCAG AA × Fail

Any Text WCAG AA × Fail

Large Text (above 18pt) WCAG AAA × Fail

Any Text WCAG AAA × Fail

Black Background



Color Contrast Check

Large Text (above 18pt) WCAG AA ✓ Pass

Any Text WCAG AA ✓ Pass

Large Text (above 18pt) WCAG AAA ✓ Pass

Any Text WCAG AAA ✓ Pass

If you want to check with other color combinations, try the [Color Contrast Checker](#).

Hex ED7769 Background



This preview shows how black text looks on a background with the Hex color ED7769.

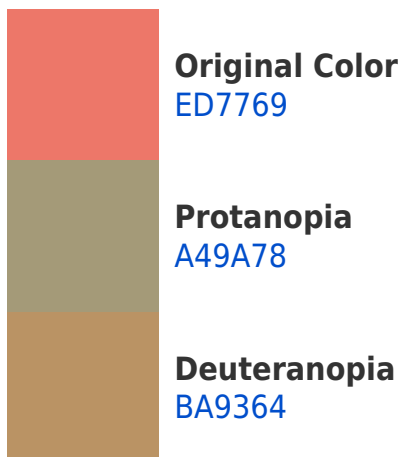


This preview shows how white text looks on a background with the Hex color ED7769.

Color Blindness Simulation

Color vision deficiency is a very complex topic, and I could not describe the different causes any better than Wikipedia does, so if you want to learn more, you should check out their [article about color blindness](#).

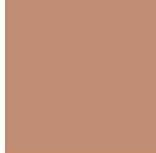
Dichromacy



Trichromacy



Original Color
ED7769



Protanomaly
BF8D73



Deuteranomaly
CD8966

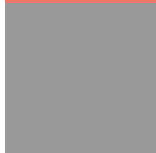


Tritanomaly
EE7575

Monochromacy



Original Color
ED7769



Achromatopsia
999999



Achromatomaly
B88D88

CSS Examples

Text

The CSS property to change the color of the text to Hex ED7769 is called "color". The color property can be set on classes, ids or directly on the HTML element.

This example shows how text in the color #ED7769 looks like.

```
.text, #text, p{  
    color:#ED7769  
}
```

If you want to add a text shadow in that color use the text-shadow property, you can generate a text shadow directly with our [CSS Text Shadow Generator](#).

Here you see how black text with a 4 pixel #ED7769 colored shadow looks like.

```
.shadow{ text-shadow: 4px 4px 2px #ED7769
}
```

Border

The CSS property to change the border of an element to Hex ED7769 is called "border". The border property can be set on classes, ids or directly on the HTML element.

This example shows the color as border, it can be applied via the CSS property "border" or "border-color".

```
.border, #border, table{ border:4px solid
#ED7769 }
```

If only the border color should be changed use the property `border-color`.

```
.border{ border-color:#ED7769 }
```

If you want to add a box shadow in that color use:

Here you see how a box with a 4 pixel #ED7769 colored shadow looks like.

```
.boxshadow{ -moz-box-shadow:4px 4px 4px  
4px #ED7769; -webkit-box-shadow:4px 4px  
4px 4px #ED7769; box-shadow:4px 4px 4px  
4px #ED7769 }
```

Background

The CSS property to change the background color of an element to Hex ED7769 is called "background". The background property can be set on classes, ids or directly on the HTML element.

```
.background, #background, body{  
background:#ED7769 }
```

If only the background color should be changed can be used:

```
.background{ background-color:#ED7769 }
```

This example shows the color as background, it is applied via the CSS property "background".

To optimize and compress your CSS code, you can use our [online CSS compressor and optimizer](#) based on csstidy. If you want to create a linear or radial gradient as background or border, check our [CSS Gradient Generator](#).

Hey! You found this booklet interesting? Support Converting Colors with the new Membership Option!

The pro membership hides all ads, plus gives you double the colors in the color bucket, and more awesome pro features!

[Learn more, Memberships starting at \\$2.50/m!](#)

**Follow me
on Twitter!**

@ConvertingColor