

Converting Colors

Hex(ED8278)

Have a look what the booklet for
Hex(ED8278) contains.

Hex(ED8278)	3
<i>Conversions</i>	4
<i>Details</i>	6
<i>Harmonies</i>	11
<i>Previews</i>	23
<i>Color Blindness Simulation</i>	26
<i>CSS Examples</i>	29

Color

Hex(ED8278)

Conversions

Conversions Part 1

Format	Color
Hex	ED8278
RGB	237, 130, 120
RGB Percent	93%, 51%, 47%
CMY	0.0706, 0.4902, 0.5294
CMYK	0.00, 0.45, 0.49, 0.07
HSL	5°, 76%, 70%
HSV	5°, 49%, 93%
XYZ	46.2978, 35.3259, 22.1477
YIQ	160.8530, 66.9820, 19.5740

Conversions

Conversions Part 2

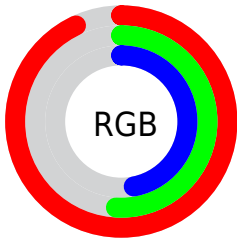
Format	Color
R _Y B	237, 131, 120
Decimal	15565432
CIE Lab	66.00, 39.95, 23.76
CIE LCh	66, 46.485, 30.740
Yxy	35.3259, 0.4462, 0.3404
Android (android.graphics.Color)	4293755512 (0xFFED8278)
YUV	160.8530, -20.1405, 66.7809
Hunter-Lab	59.4356, 35.0319, 19.5114

Details

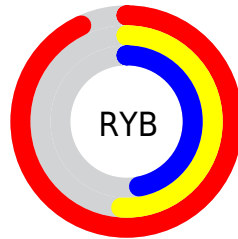
The Hex color **ED8278** is a light color, and the websafe version is hex **FF9999**. A complement of this color would be **78E3ED**, and the grayscale version is **A1A1A1**.

A 20% lighter version of the original color is **FFB9AC**, and **B14E47** is the 20% darker color. If you saturate the color by 10%, you get **ED6C60**, and if you desaturate by 10%, it is **ED9890**.

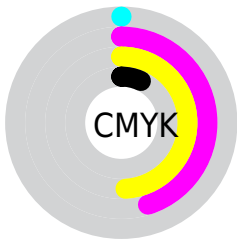
Distribution



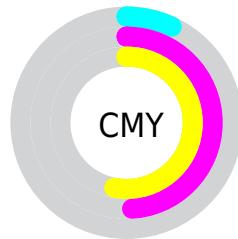
- Red (93%)
- Green (51%)
- Blue (47%)



- Red (93%)
- Yellow (51%)
- Blue (47%)



- Cyan (0%)
- Magenta (45%)
- Yellow (49%)
- Black (7%)



- Cyan (7%)
- Magenta (49%)
- Yellow (53%)

Brightness & Saturation Gradients

These gradients show how the Hex color ED8278 changes by changing the brightness by 10 percent. The first figure shows a shift by +10% for each color and the second figure -10%.

Similar to the brightness gradients but the following saturation gradients show a change of the Hex color ED8278 by changing the saturation by 10% instead.

 ED8278

 ED8278

FFFFFF

 CF685F

 FFB9AC

 B14E47

 FFD5C8

 943431

 FFF2E4

 771A1C

 5B0003

 3F0000

 240001

 000000

 ED8278

 ED8278

 ED6C60

 ED9890

 ED5749

 EDADA7

 ED4131

 EDC3BF

 ED2B19

 EDD9D7

 ED1602

 EDEEEE

 ED1400

 EDFFFF

Harmonies

Analogous

The Analogous color harmony consists of three colors that are next to each other on the color wheel.



ED7EA1



ED8278



DA8F58

Triad

The Triadic color harmony groups three colors that are evenly spaced from another and form a triangle on the color wheel.



ED8278



58B276



59A4F4

Complementary

The Complementary color scheme is a pair of colors which are on the opposite of each other on the color wheel.



ED8278



78E3ED

Split Complementary

Split-complementary colors differ from the complementary color scheme. The scheme consists of three colors, the original color and two neighbors of the complement color.



00AFE8



ED8278



00B6A0

Square

The Square scheme is like the rectangle color scheme, but the four colors are evenly spaced on the color wheel.



ED8278



8EAA56



00B5CA



A595E8

Rectangle

The Rectangle color scheme consists of four colors that form a rectangle on the color wheel.



ED8278



C59A4C



00B5CA



32A9F2

Sweetspot

The Sweet Spot groups the original color and five complimentary colors.



ED8278



FFDCD9



ED78E3



806B69



000000



808080

Same Dimension

The Same Dimension uses a secret algorithm to generate beautiful new colors.



ED8278



FF7569



EDBC78



756B6A



B50F00



360500

Inverse Universe

The Inverse Universe completely reimagines the original color for something new.



78E3ED



69F2FF



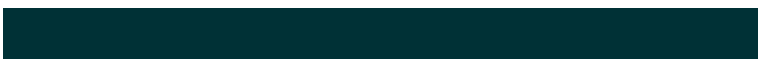
78A9ED



6A7475



00A6B5



003136

Previews

White Background



This preview shows how the Hex color ED8278 looks on a white background.

Color Contrast Check

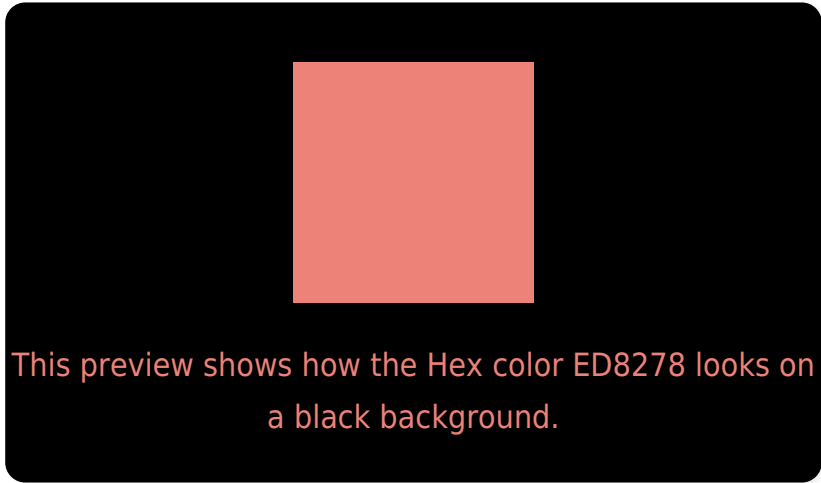
Large Text (above 18pt) WCAG AA × Fail

Any Text WCAG AA × Fail

Large Text (above 18pt) WCAG AAA × Fail

Any Text WCAG AAA × Fail

Black Background



Color Contrast Check

Large Text (above 18pt) WCAG AA ✓ Pass

Any Text WCAG AA ✓ Pass

Large Text (above 18pt) WCAG AAA ✓ Pass

Any Text WCAG AAA ✓ Pass

If you want to check with other color combinations, try the [Color Contrast Checker](#).

Hex ED8278 Background



This preview shows how black text looks on a background with the Hex color ED8278.

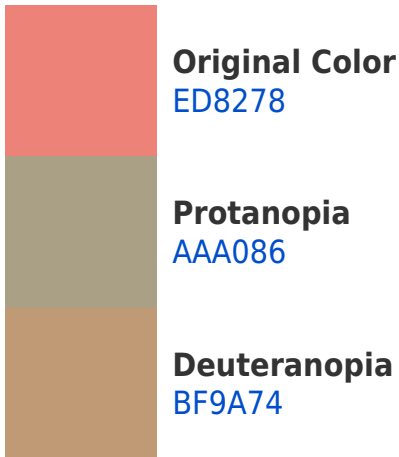


This preview shows how white text looks on a background with the Hex color ED8278.

Color Blindness Simulation

Color vision deficiency is a very complex topic, and I could not describe the different causes any better than Wikipedia does, so if you want to learn more, you should check out their [article about color blindness](#).

Dichromacy



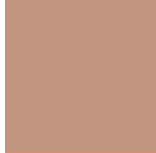


Tritanopia
EE8089

Trichromacy



Original Color
ED8278



Protanomaly
C29581



Deuteranomaly
D09175

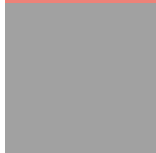


Tritanomaly
EE8183

Monochromacy



Original Color
ED8278



Achromatopsia
A1A1A1



Achromatomaly
BD9692

CSS Examples

Text

The CSS property to change the color of the text to Hex ED8278 is called "color". The color property can be set on classes, ids or directly on the HTML element.

This example shows how text in the color #ED8278 looks like.

```
.text, #text, p{  
    color:#ED8278  
}
```

If you want to add a text shadow in that color use the text-shadow property, you can generate a text shadow directly with our [CSS Text Shadow Generator](#).

Here you see how black text with a 4 pixel #ED8278 colored shadow looks like.

```
.shadow{ text-shadow: 4px 4px 2px #ED8278
}
```

Border

The CSS property to change the border of an element to Hex ED8278 is called "border". The border property can be set on classes, ids or directly on the HTML element.

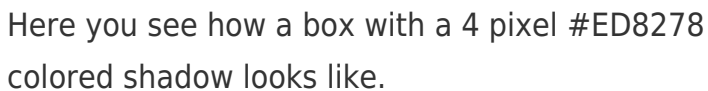
This example shows the color as border, it can be applied via the CSS property "border" or "border-color".

```
.border, #border, table{ border:4px solid
#ED8278 }
```

If only the border color should be changed use the property `border-color`.

```
.border{ border-color:#ED8278 }
```

If you want to add a box shadow in that color use:



Here you see how a box with a 4 pixel #ED8278 colored shadow looks like.

```
.boxshadow{ -moz-box-shadow:4px 4px 4px  
4px #ED8278; -webkit-box-shadow:4px 4px  
4px 4px #ED8278; box-shadow:4px 4px 4px  
4px #ED8278 }
```

Background

The CSS property to change the background color of an element to Hex ED8278 is called "background". The background property can be set on classes, ids or directly on the HTML element.

```
.background, #background, body{  
background:#ED8278 }
```

If only the background color should be changed can be used:

```
.background{ background-color:#ED8278 }
```

This example shows the color as background, it is applied via the CSS property "background".

To optimize and compress your CSS code, you can use our [online CSS compressor and optimizer](#) based on csstidy. If you want to create a linear or radial gradient as background or border, check our [CSS Gradient Generator](#).

Hey! You found this booklet interesting? Support Converting Colors with the new Membership Option!

The pro membership hides all ads, plus gives you double the colors in the color bucket, and more awesome pro features!

[Learn more, Memberships starting at \\$2.50/m!](#)

**Follow me
on Twitter!**

@ConvertingColor